

NET INSIDE CAB AREA - 37.89 SQ FT

D.B.G. = Distance between guide rails.  
 O/O = Out to out  
 W/ = with

DRAWINGS ARE FOR REFERENCE USE ONLY AND ARE NOT INTENDED FOR PURPOSES OF CONSTRUCTION.

STAINLESS STEEL HANDRAIL 1-1/4" Ø WITH 1-1/2" CLEAR TO THE WALL

ELECTRICAL TROUGH

1HR FIREWALL (BASED ON U.L. DESIGN NUMBERS U419, U465, V438) W/ 5/8" TYPE X EXTERIOR SHEATHING

RAIL

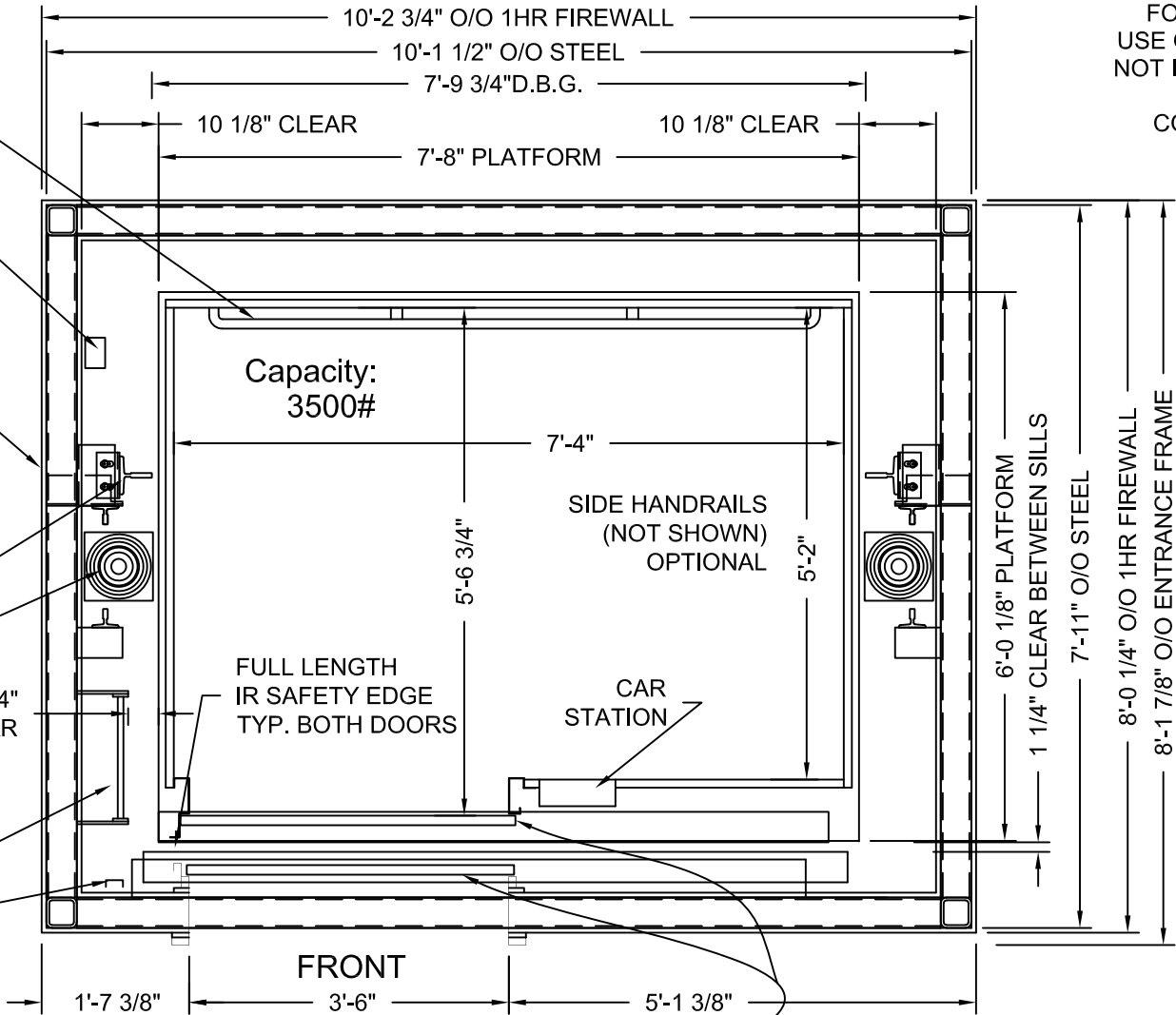
JACK TYP.

4" CLEAR

PIT LADDER

PIT SWITCH

HOLELESS JACK SYSTEM SHOWN, HOLED JACK SYSTEM AVAILABLE



SINGLE SPEED, SINGLE SLIDE DOOR WTH POWER OPERATOR

STRETCHER COMPLIANT  
 ADA COMPLIANT

MODEL: AC3000/AC4000 SLF 3-STAGE  
 RIGHT HAND EXIT SHOWN - LEFT HAND EXIT OPPOSITE  
 ONE HOUR SHAFT RATING

MEETS IBC 2006/2009 SECTION 3002.4  
 Designed for 24"x84" ambulance stretcher / gurney

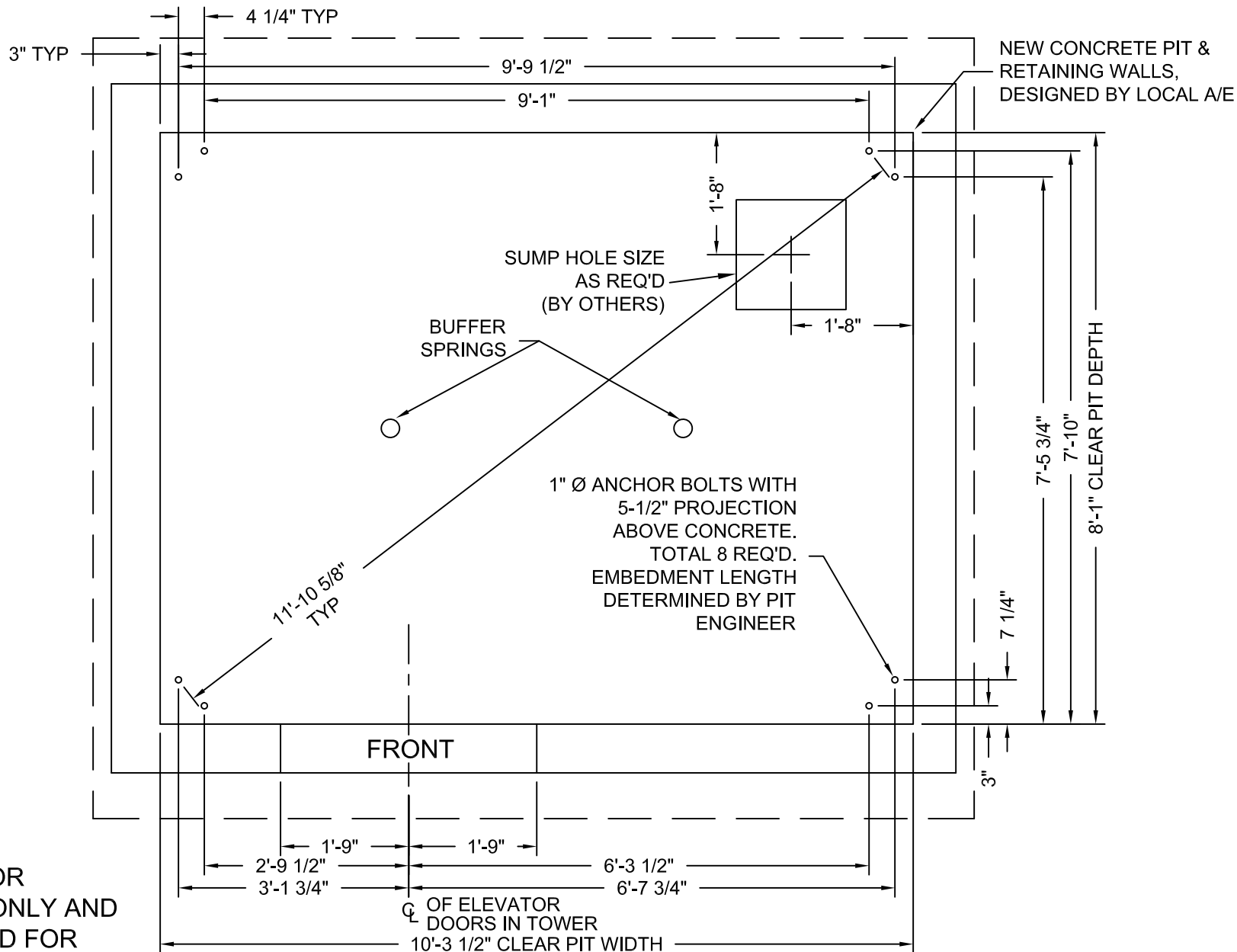
Issue Date:



**PHOENIX MODULAR ELEVATOR INC.**  
 4800 PHOENIX DRIVE, MT. VERNON, ILLINOIS 62864  
 PHONE: (618)-244-2314 FAX: (618)-244-1923  
 E-mail: [Info@phoenixmodularelevator.com](mailto:Info@phoenixmodularelevator.com)  
 Web page: [www.phoenixmodularelevator.com](http://www.phoenixmodularelevator.com)

HOISTWAY & CAR PLAN - 1HR FIRE RATED HOISTWAY

|                   |     |           |                        |
|-------------------|-----|-----------|------------------------|
| SIZE<br>A         | REV | REV. DATE | FILE NO.               |
| SCALE: 1/2"=1'-0" |     | DATE:     | DWG NO. <b>SLF-1HR</b> |



DRAWINGS ARE FOR  
REFERENCE USE ONLY AND  
ARE NOT INTENDED FOR  
PURPOSES OF  
CONSTRUCTION.

MODEL: AC3000/AC4000 SLF / SLFR 3-STAGE  
RIGHT HAND EXIT SHOWN - LEFT HAND EXIT OPPOSITE

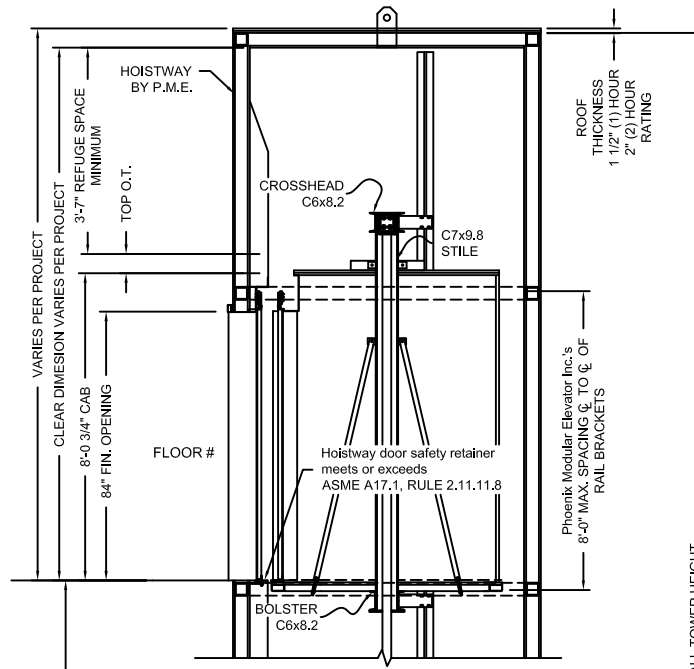
Issue Date:



**PHOENIX MODULAR ELEVATOR INC.**  
4800 PHOENIX DRIVE, MT. VERNON, ILLINOIS 62864  
PHONE: (618)-244-2314 FAX: (618)-244-1923  
E-mail: [info@phoenixmodularelevator.com](mailto:info@phoenixmodularelevator.com)  
Web page: [www.phoenixmodularelevator.com](http://www.phoenixmodularelevator.com)

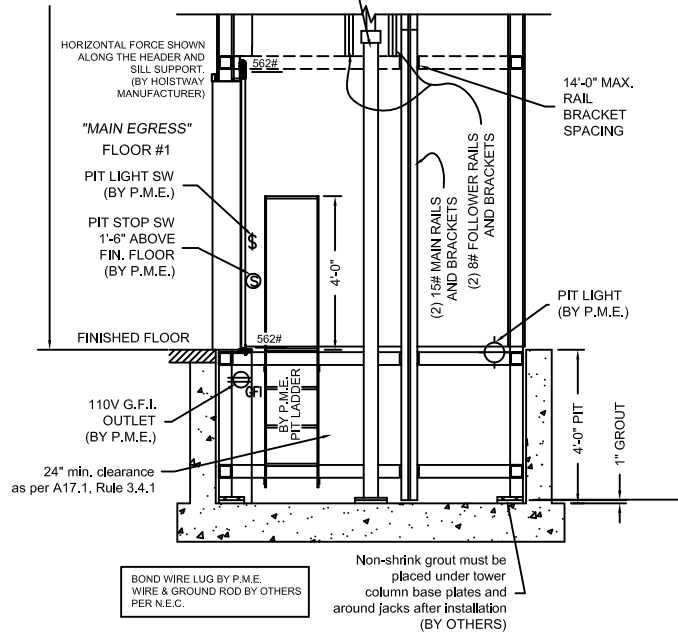
MODEL SLF / SLFR PIT PLAN - HOLELESS JACKS

|                   |     |           |                       |
|-------------------|-----|-----------|-----------------------|
| SIZE<br>A         | REV | REV. DATE | FILE NO.              |
| SCALE: 1/2"=1'-0" |     | DATE:     | DWG NO. <b>SLF-P2</b> |



| FLOOR TO FLOOR DISTANCE | FLOOR MARKING     | FLOOR NUMBER |
|-------------------------|-------------------|--------------|
| VARIES                  | 4                 | 4            |
| VARIES                  | 3                 | 3            |
| VARIES                  | 2                 | 2            |
|                         | ☆ 1               | 1            |
| VARIES                  | NET FLOOR TRAVEL  |              |
| VARIES                  | TOP OVERTRAVEL    |              |
| 9-1/2" TYP              | BOTTOM OVERTRAVEL |              |
| VARIES                  | TOTAL TRAVEL      |              |

(2) 3-STAGE TELESCOPIC TWIN JACKS CLEARANCE PROVIDED BETWEEN PISTON & CYLINDER WHEN CAR IS ON COMPRESSED SPRINGS IS 1"



## SECTION VIEW

NOT TO SCALE

The section view is for informational / dimensional data. See the hoistway plan view for actual equipment locations.

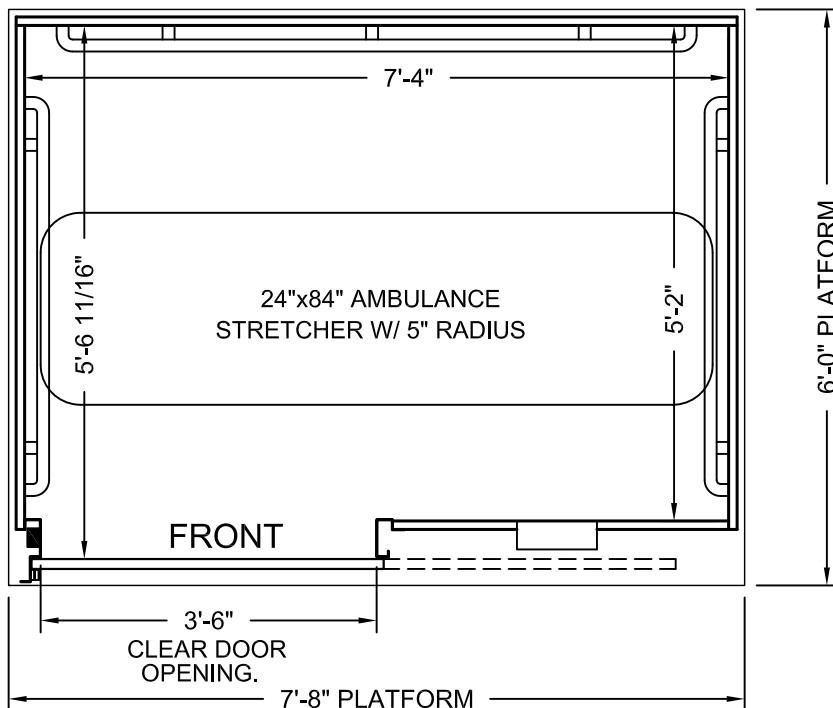
Issue Date:



**PHOENIX MODULAR ELEVATOR INC.**  
 4800 PHOENIX DRIVE, MT. VERNON, ILLINOIS 62864  
 PHONE: (618)-244-2314 FAX: (618)-244-1923  
 E-mail: [Info@phoenixmodularelevator.com](mailto:Info@phoenixmodularelevator.com)  
 Web page: [www.phoenixmodularelevator.com](http://www.phoenixmodularelevator.com)

## SECTION VIEW FOR HOLELESS JACK SYSTEM

| SIZE   | REV    | REV. DATE | FILE NO.          |
|--------|--------|-----------|-------------------|
| A      |        |           |                   |
| SCALE: | N.T.S. | DATE:     | DWG NO. SV-TJ/TTJ |



### PLAN VIEW

Elevator car designed to accommodate ambulance stretcher as per IBC Section 3002.4  
Capacity = 3500 lbs.

Car enclosure - laminate on wood  
*All material for car enclosures meet the requirements of ASME A17.1 RULE 2.14.2.1*

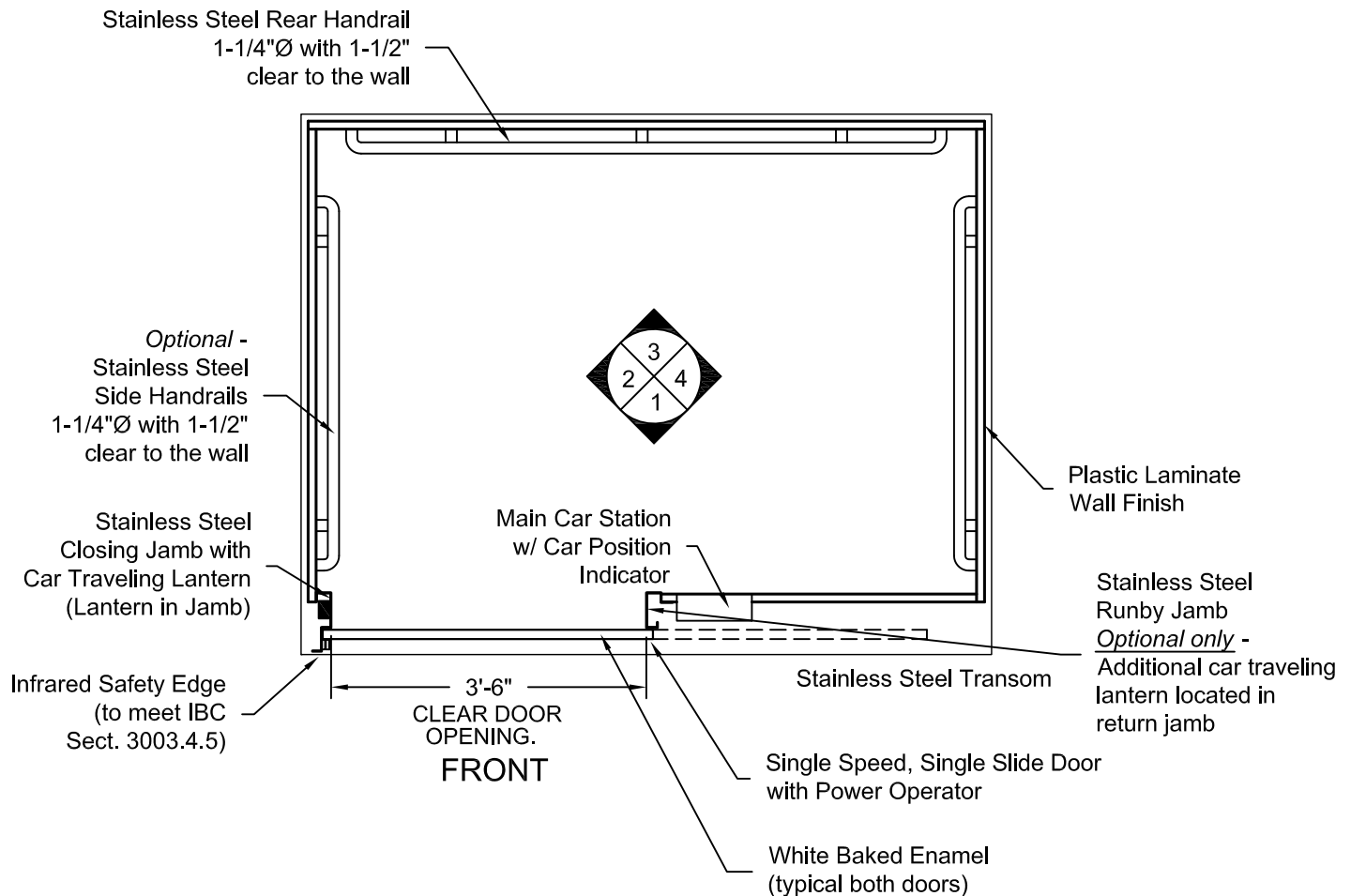
Issue Date:



**PHOENIX MODULAR ELEVATOR INC.**  
4800 PHOENIX DRIVE, MT. VERNON, ILLINOIS 62864  
PHONE: (618)-244-2314 FAX: (618)-244-1923  
E-mail: info@phoenixmodularelevator.com  
Web page: www.phoenixmodularelevator.com

### FRONT EXIT ELEVATOR CAB

|                  |       |                      |          |
|------------------|-------|----------------------|----------|
| SIZE<br>A        | REV   | REV. DATE            | FILE NO. |
| SCALE:<br>N.T.S. | DATE: | DWG NO.<br>CAB-SLF-1 |          |



**PLAN VIEW**  
**RIGHT FRONT DOOR**  
**(MIRROR IMAGE IS AVAILABLE)**

Issue Date:

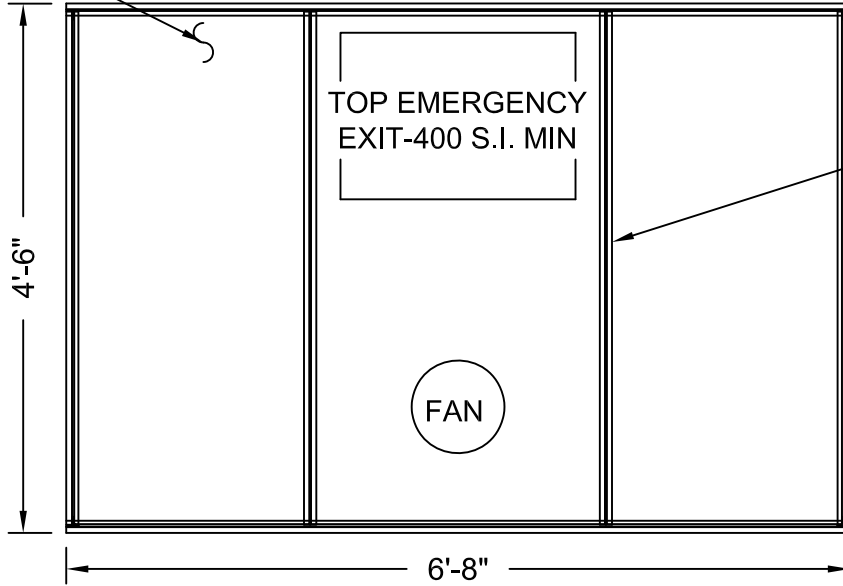


**PHOENIX MODULAR ELEVATOR INC.**  
 4800 PHOENIX DRIVE, MT. VERNON, ILLINOIS 62864  
 PHONE: (618)-244-2314 FAX: (618)-244-1923  
 E-mail: info@phoenixmodularelevator.com  
 Web page: www.phoenixmodularelevator.com

**FRONT EXIT ELEVATOR CAB - PLAN VIEW**

|                  |       |                      |          |
|------------------|-------|----------------------|----------|
| SIZE<br>A        | REV   | REV. DATE            | FILE NO. |
| SCALE:<br>N.T.S. | DATE: | DWG NO.<br>CAB-SLF-2 |          |

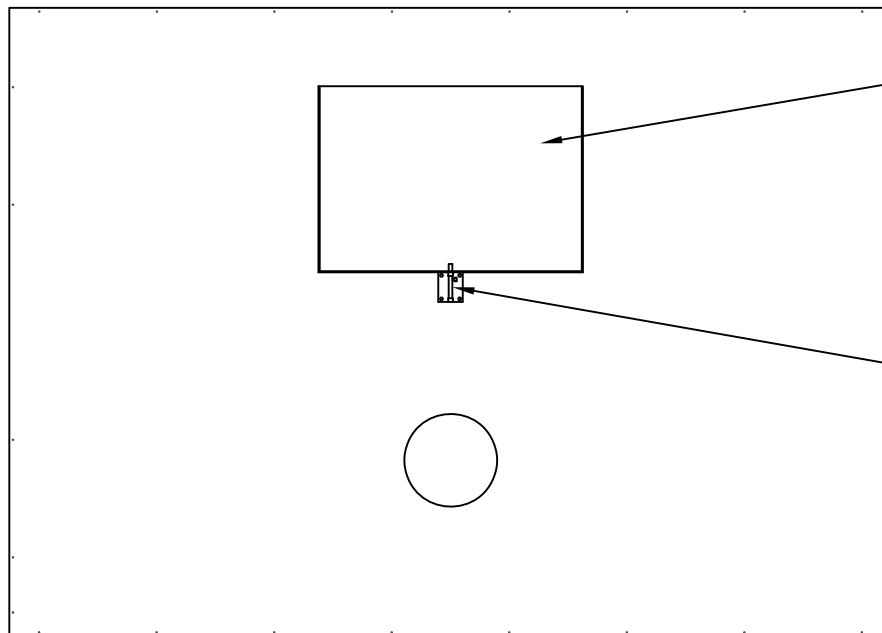
Removable Polycarbonate Ceiling Panels



Aluminum T-Bar

Aluminum Frame

## REFLECTIVE CEILING PLAN



Steel, Emergency Hatch Door

Barrel Slide Bolt

## ROOF PLAN VIEW EMERGENCY EXIT DOOR

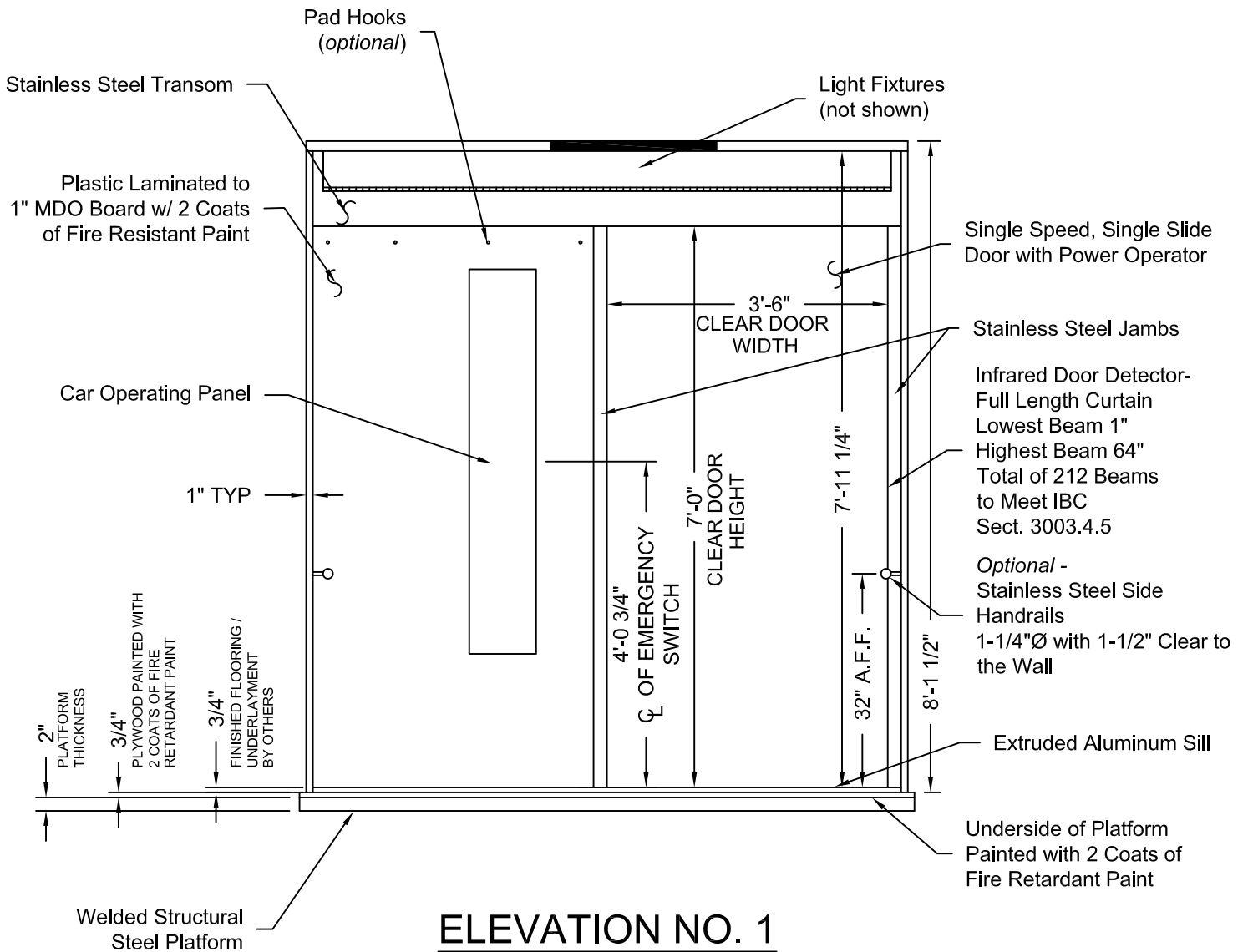
Issue Date:



**PHOENIX MODULAR ELEVATOR INC.**  
4800 PHOENIX DRIVE, MT. VERNON, ILLINOIS 62864  
PHONE: (618)-244-2314 FAX: (618)-244-1923  
E-mail: info@phoenixmodularelevator.com  
Web page: www.phoenixmodularelevator.com

CEILING PLAN - front exit elevator car

|                  |       |                      |          |
|------------------|-------|----------------------|----------|
| SIZE<br>A        | REV   | REV. DATE            | FILE NO. |
| SCALE:<br>N.T.S. | DATE: | DWG NO.<br>CAB-SLF-3 |          |



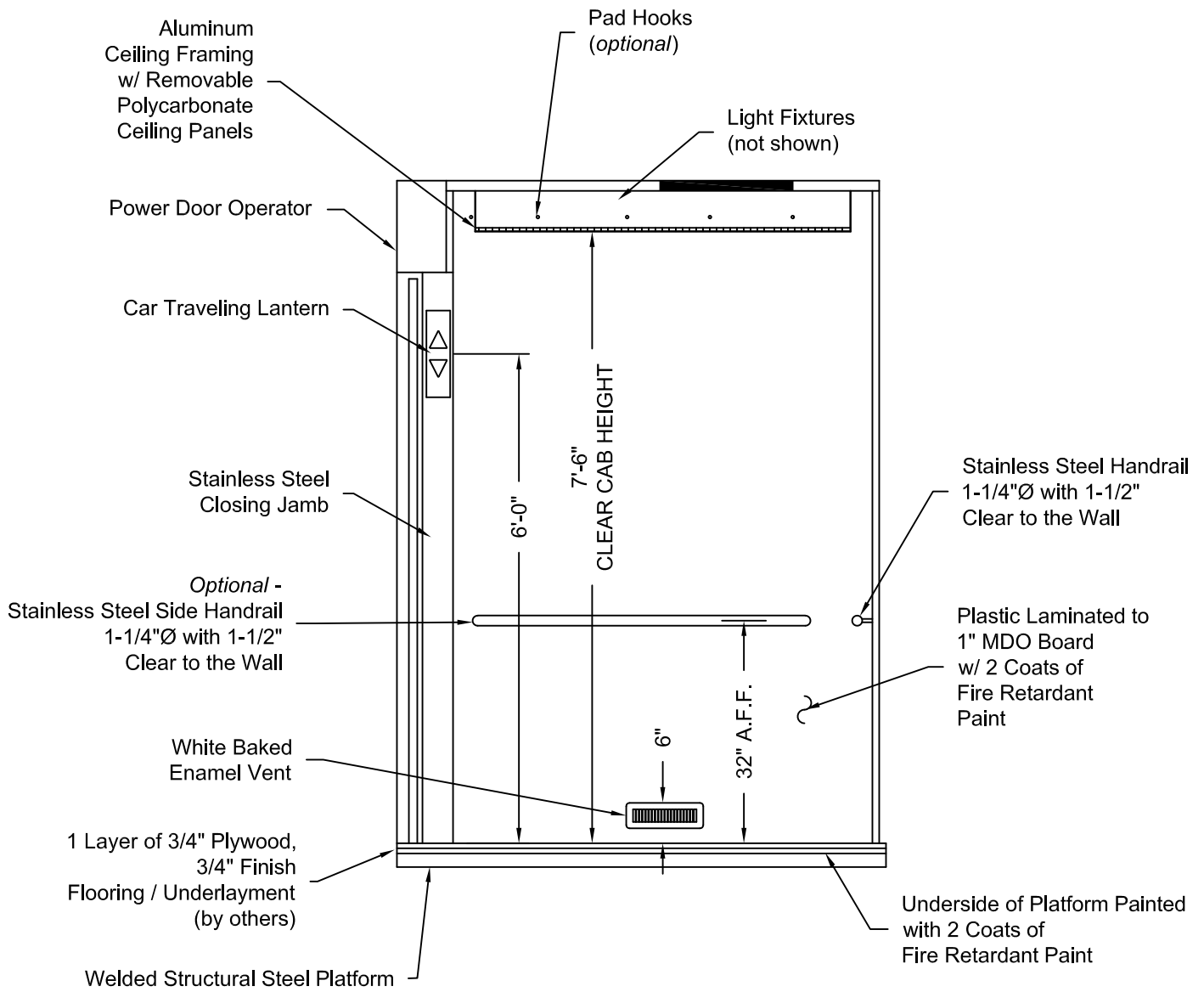
Issue Date:



**PHOENIX MODULAR ELEVATOR INC.**  
 4800 PHOENIX DRIVE, MT. VERNON, ILLINOIS 62864  
 PHONE: (618)-244-2314 FAX: (618)-244-1923  
 E-mail: [Info@phoenixmodularelevator.com](mailto:Info@phoenixmodularelevator.com)  
 Web page: [www.phoenixmodularelevator.com](http://www.phoenixmodularelevator.com)

**ELEVATION NO. 1 - front exit elevator car**

|                  |       |                      |          |
|------------------|-------|----------------------|----------|
| SIZE<br>A        | REV   | REV. DATE            | FILE NO. |
| SCALE:<br>N.T.S. | DATE: | DWG NO.<br>CAB-SLF-4 |          |



## ELEVATION NO. 2

Issue Date:

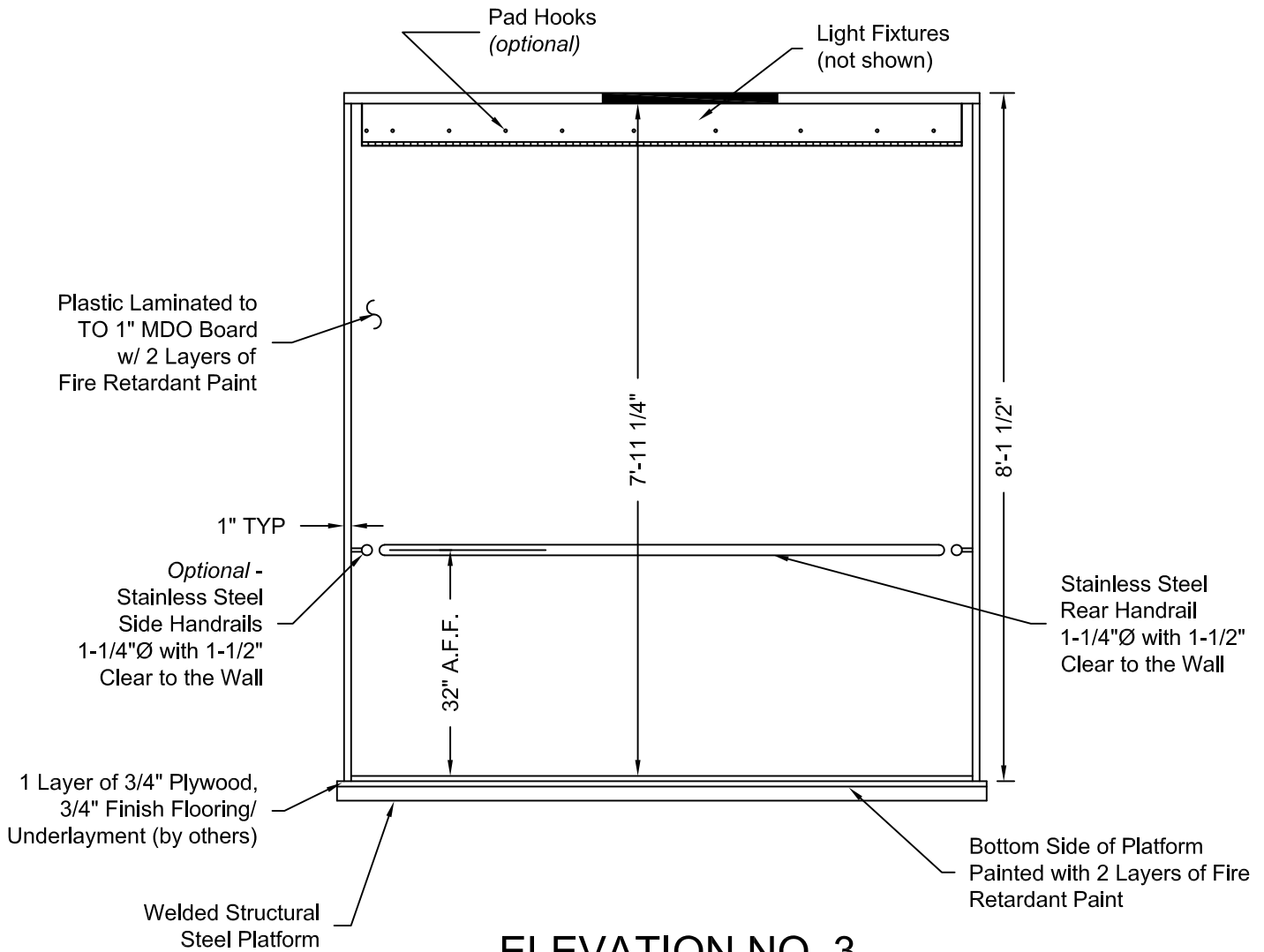


**PHOENIX MODULAR ELEVATOR INC.**  
 4800 PHOENIX DRIVE, MT. VERNON, ILLINOIS 62864  
 PHONE: (618)-244-2314 FAX: (618)-244-1923  
 E-mail: [Info@phoenixmodularelevator.com](mailto:Info@phoenixmodularelevator.com)  
 Web page: [www.phoenixmodularelevator.com](http://www.phoenixmodularelevator.com)

### ELEVATION NO. 2 - front exit elevator car

|               |     |           |                   |
|---------------|-----|-----------|-------------------|
| SIZE<br>A     | REV | REV. DATE | FILE NO.          |
| SCALE: N.T.S. |     | DATE:     | DWG NO. CAB-SLF-5 |





## ELEVATION NO. 3

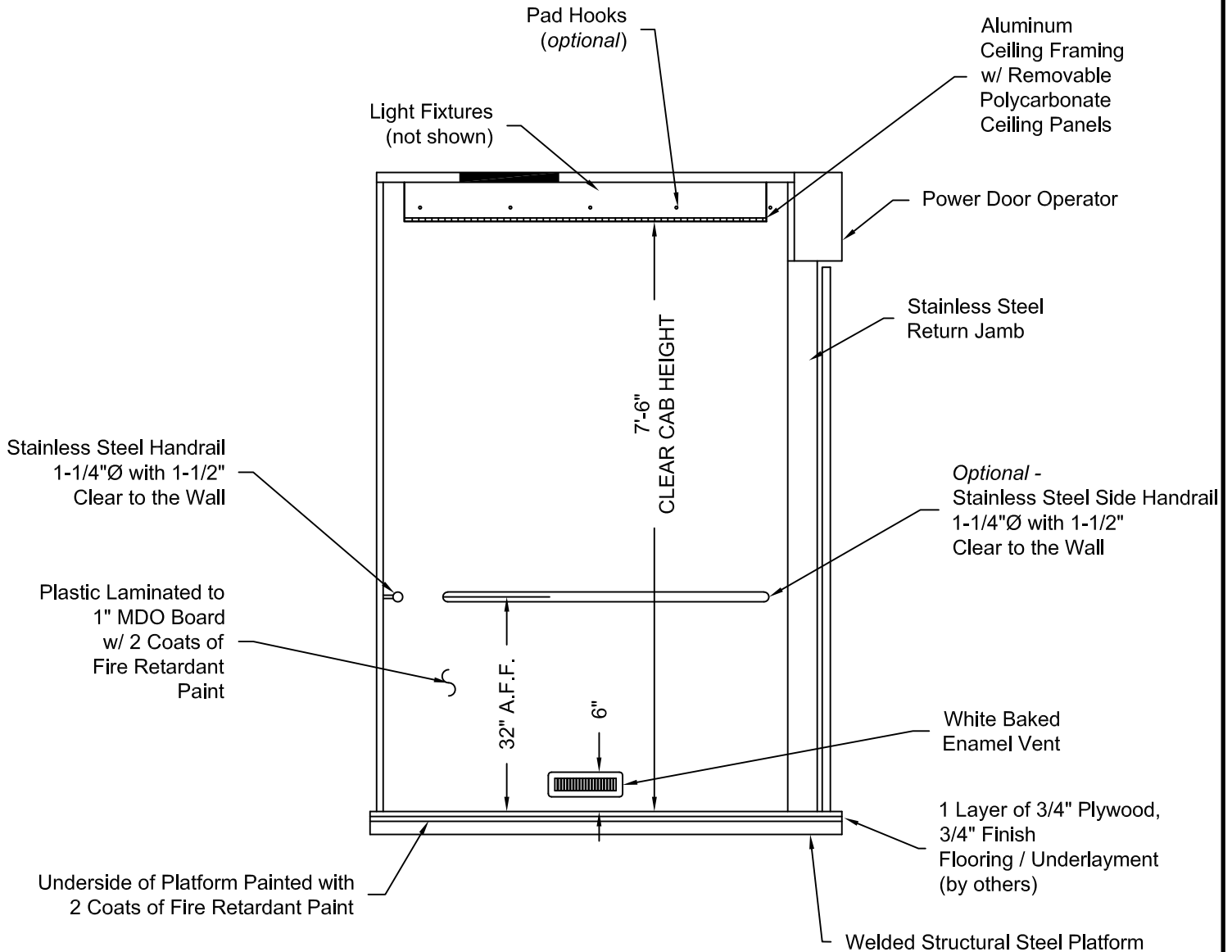
Issue Date:



**PHOENIX MODULAR ELEVATOR INC.**  
 4800 PHOENIX DRIVE, MT. VERNON, ILLINOIS 62864  
 PHONE: (618)-244-2314 FAX: (618)-244-1923  
 E-mail: [Info@phoenixmodularelevator.com](mailto:Info@phoenixmodularelevator.com)  
 Web page: [www.phoenixmodularelevator.com](http://www.phoenixmodularelevator.com)

### ELEVATION NO.3 - front exit elevator car

|                  |       |                      |          |
|------------------|-------|----------------------|----------|
| SIZE<br>A        | REV   | REV. DATE            | FILE NO. |
| SCALE:<br>N.T.S. | DATE: | DWG NO.<br>CAB-SLF-6 |          |



## ELEVATION NO. 4

Issue Date:



**PHOENIX MODULAR ELEVATOR INC.**  
 4800 PHOENIX DRIVE, MT. VERNON, ILLINOIS 62864  
 PHONE: (618)-244-2314 FAX: (618)-244-1923  
 E-mail: [Info@phoenixmodularelevator.com](mailto:Info@phoenixmodularelevator.com)  
 Web page: [www.phoenixmodularelevator.com](http://www.phoenixmodularelevator.com)

### ELEVATION NO. 4 - front exit elevator car

|           |        |           |                   |
|-----------|--------|-----------|-------------------|
| SIZE<br>A | REV    | REV. DATE | FILE NO.          |
| SCALE:    | N.T.S. | DATE:     | DWG NO. CAB-SLF-7 |