

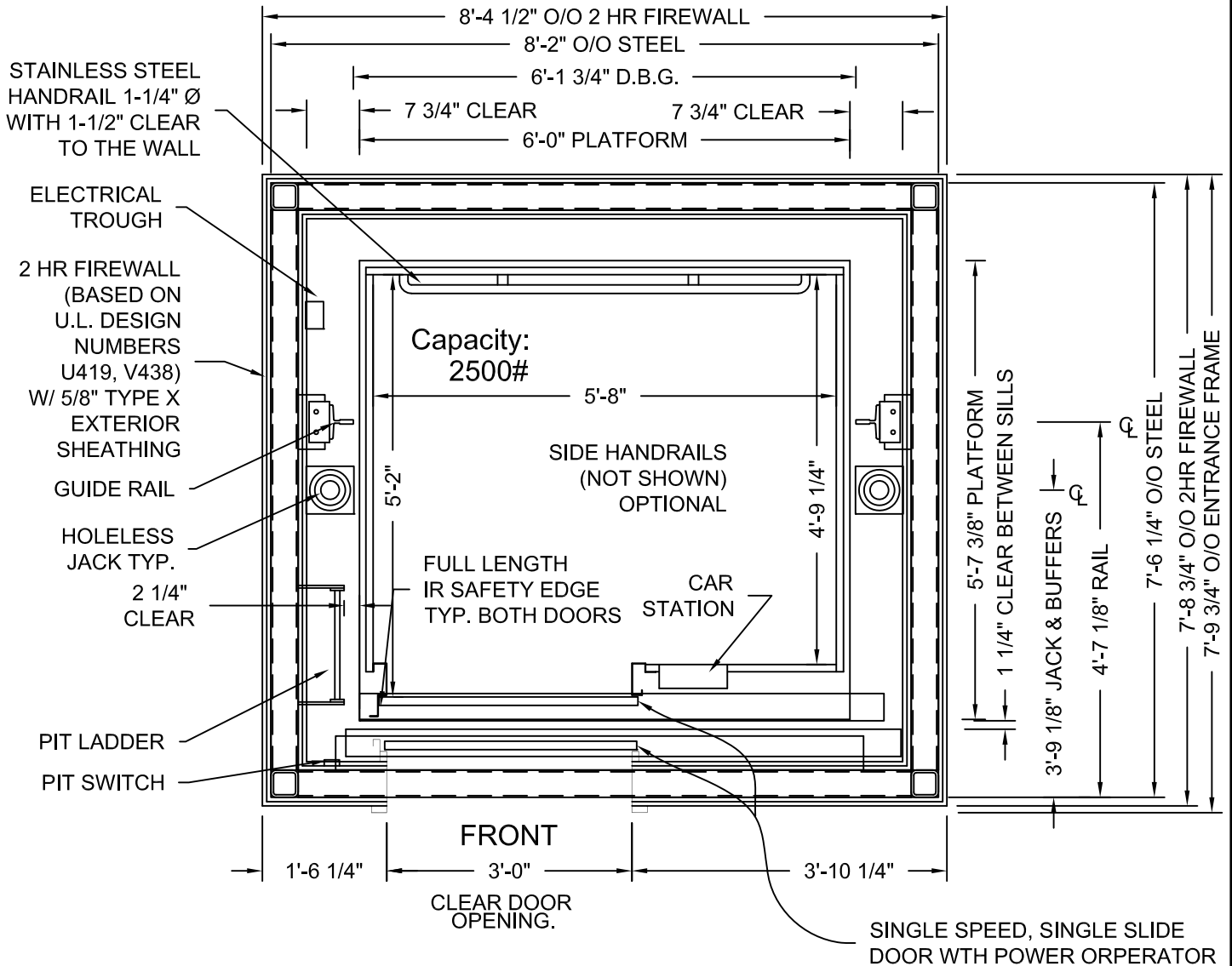
DRAWINGS ARE FOR REFERENCE USE ONLY AND ARE NOT INTENDED FOR PURPOSES OF CONSTRUCTION.

NET INSIDE CAB AREA - 27.03 SQ FT

D.B.G. = Distance between guide rails.

O/O = Out to out

W/ = with



HOLELESS JACK SYSTEM SHOWN, HOLED JACK SYSTEM AVAILABLE

MODEL: AC3000/AC4000 WF  
 RIGHT HAND EXIT SHOWN - LEFT HAND EXIT OPPOSITE  
 TWO HOUR SHAFT RATING

ADA COMPLIANT

Issue Date:

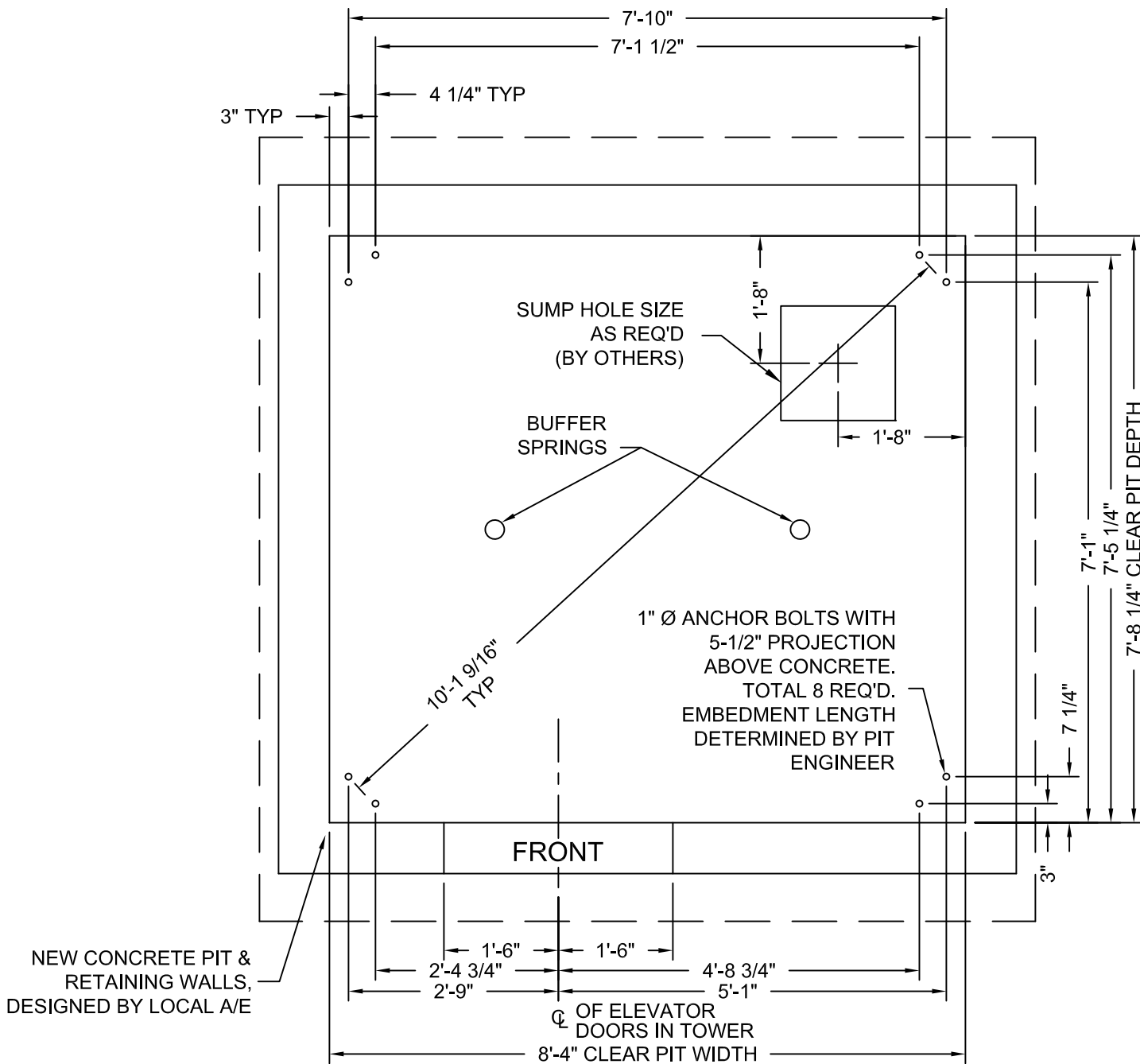


**PHOENIX MODULAR ELEVATOR INC.**  
 4800 PHOENIX DRIVE, MT. VERNON, ILLINOIS 62864  
 PHONE: (618)-244-2314 FAX: (618)-244-1923  
 E-mail: info@phoenixmodularelevator.com  
 Web page: www.phoenixmodularelevator.com

HOISTWAY & CAR PLAN - 2HR FIRE RATED HOISTWAY

SIZE A	REV	REV. DATE	FILE NO.
SCALE: 1/2"=1'-0"	DATE:	DWG NO.	WF-2HR

DRAWINGS ARE FOR  
REFERENCE USE ONLY AND  
ARE NOT INTENDED FOR  
PURPOSES OF  
CONSTRUCTION.



MODEL: AC3000 WF / WFR

RIGHT HAND EXIT SHOWN - LEFT HAND EXIT OPPOSITE

AC4000 TYPICALLY USES HOLED JACK. ONLY UNDER CERTAIN CIRCUMSTANCES CAN HOLELESS JACKS BE USED.

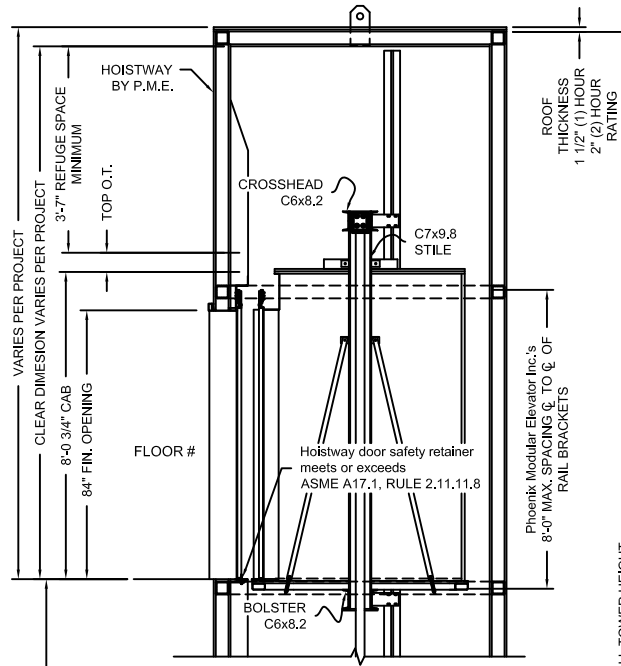
Issue Date:



**PHOENIX MODULAR ELEVATOR INC.**  
4800 PHOENIX DRIVE, MT. VERNON, ILLINOIS 62864  
PHONE: (618)-244-2314 FAX: (618)-244-1923  
E-mail: [Info@phoenixmodularelevator.com](mailto:Info@phoenixmodularelevator.com)  
Web page: [www.phoenixmodularelevator.com](http://www.phoenixmodularelevator.com)

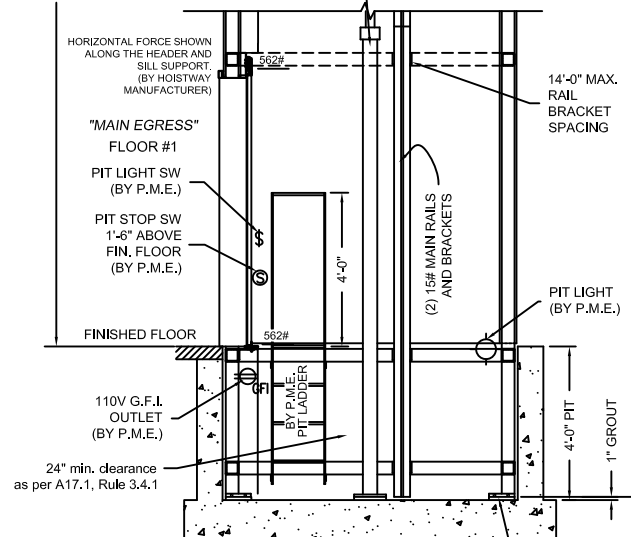
MODEL WF / WFR PIT PLAN - HOLELESS JACKS

SIZE A	REV	REV. DATE	FILE NO.
SCALE: 1/2"=1'-0"	DATE:	DWG NO.	WX-P2



FLOOR TO FLOOR DISTANCE	FLOOR MARKING	FLOOR NUMBER
VARIES	4	4
VARIES	3	3
VARIES	2	2
	☆1	1
VARIES	NET FLOOR TRAVEL	
VARIES	TOP OVERTRAVEL	
9-1/2" TYP	BOTTOM OVERTRAVEL	
VARIES	TOTAL TRAVEL	

(2) TWIN JACKS  
 PISTON LENGTH = to be determined  
 CYLINDER LENGTH = to be determined  
 CLEARANCE PROVIDED BETWEEN PISTON & CYLINDER WHEN CAR IS ON COMPRESSED SPRINGS IS 1"



BOND WIRE LUG BY P.M.E.  
 WIRE & GROUND ROD BY OTHERS PER N.E.C.

### SECTION VIEW

NOT TO SCALE

The section view is for informational / dimensional data. See the hoistway plan view for actual equipment locations.

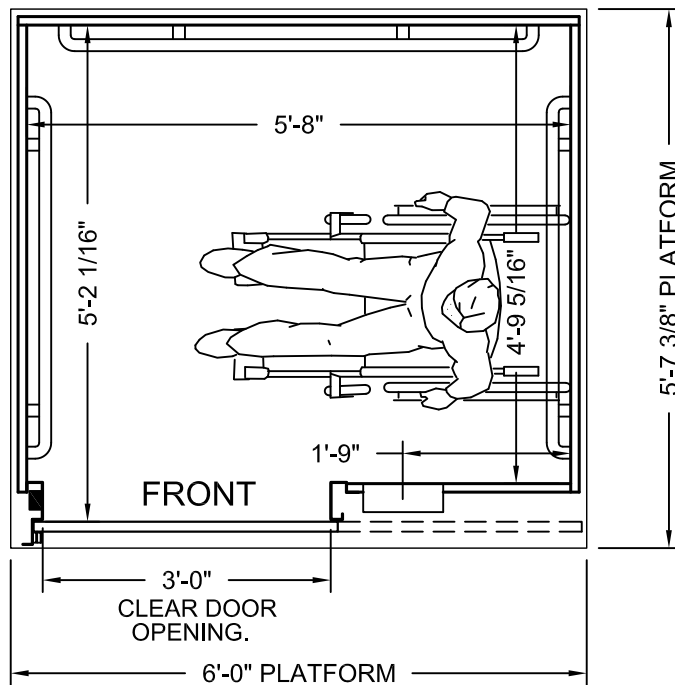
Issue Date:



**PHOENIX MODULAR ELEVATOR INC.**  
 4800 PHOENIX DRIVE, MT. VERNON, ILLINOIS 62864  
 PHONE: (618)-244-2314 FAX: (618)-244-1923  
 E-mail: info@phoenixmodularelevator.com  
 Web page: www.phoenixmodularelevator.com

### SECTION VIEW FOR HOLELESS JACK SYSTEM

SIZE A	REV	REV. DATE	FILE NO.
SCALE: N.T.S.	DATE:	DWG NO. SV-TJ/TTJ	



**PLAN VIEW**

P.M.E.'s typical front standard size elevator car.  
Capacity = 2500 lbs.

Car enclosure - laminate on wood  
*All material for car enclosures meet the requirements of  
ASME A17.1 RULE 2.14.2.1*

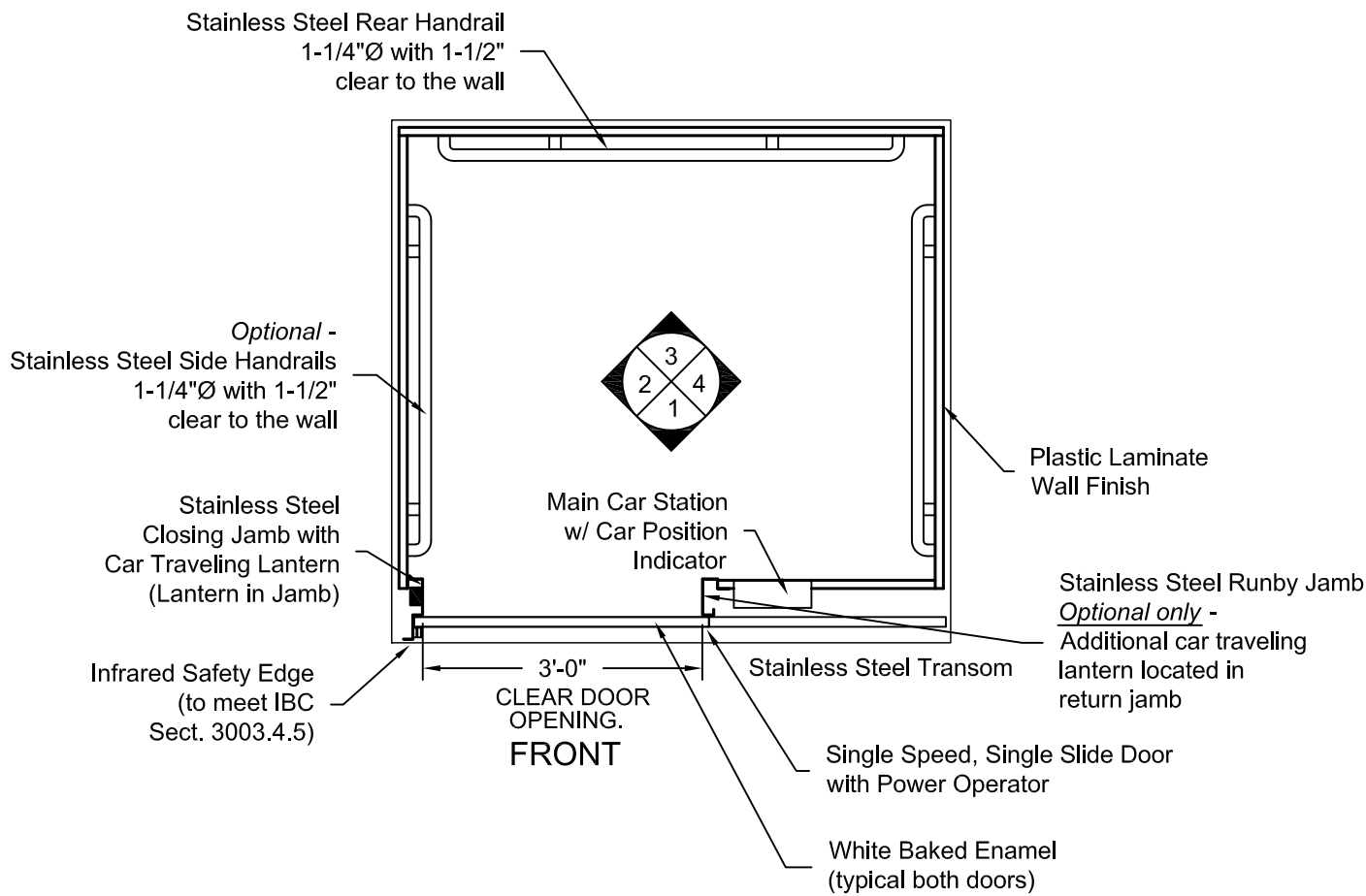
Issue Date:



**PHOENIX MODULAR ELEVATOR INC.**  
4800 PHOENIX DRIVE, MT. VERNON, ILLINOIS 62864  
PHONE: (618)-244-2314 FAX: (618)-244-1923  
E-mail: info@phoenixmodularelevator.com  
Web page: www.phoenixmodularelevator.com

**FRONT EXIT ELEVATOR CAB**

SIZE A	REV	REV. DATE	FILE NO.
SCALE: N.T.S.	DATE:	DWG NO. CAB-WF-1	



**PLAN VIEW**  
**RIGHT FRONT DOOR**  
**(MIRROR IMAGE IS AVAILABLE)**

Issue Date:

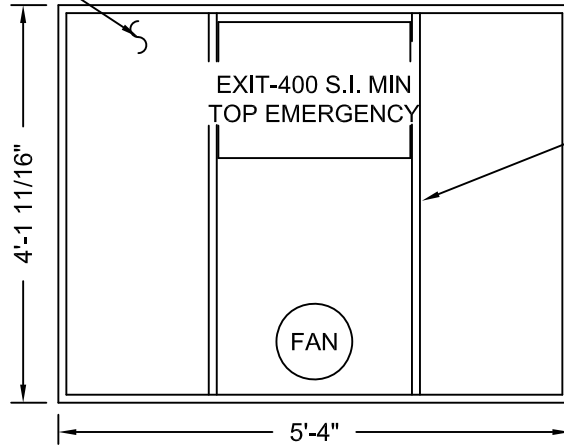


**PHOENIX MODULAR ELEVATOR INC.**  
 4800 PHOENIX DRIVE, MT. VERNON, ILLINOIS 62864  
 PHONE: (618)-244-2314 FAX: (618)-244-1923  
 E-mail: info@phoenixmodularelevator.com  
 Web page: www.phoenixmodularelevator.com

**FRONT EXIT ELEVATOR CAB - PLAN VIEW**

SIZE A	REV	REV. DATE	FILE NO.
SCALE: N.T.S.	DATE:	DWG NO. CAB-WF-2	

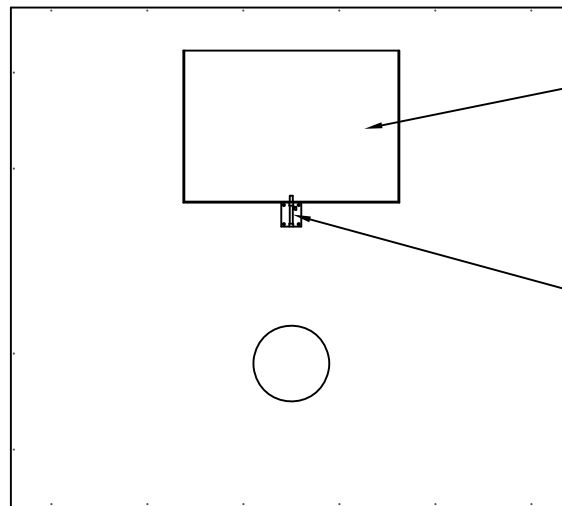
Removable  
Polycarbonate  
Ceiling Panels



Aluminum T-Bar

Aluminum Frame

### REFLECTIVE CEILING PLAN



Steel,  
Emergency  
Hatch Door

Barrel Slide Bolt

### ROOF PLAN VIEW EMERGENCY EXIT DOOR

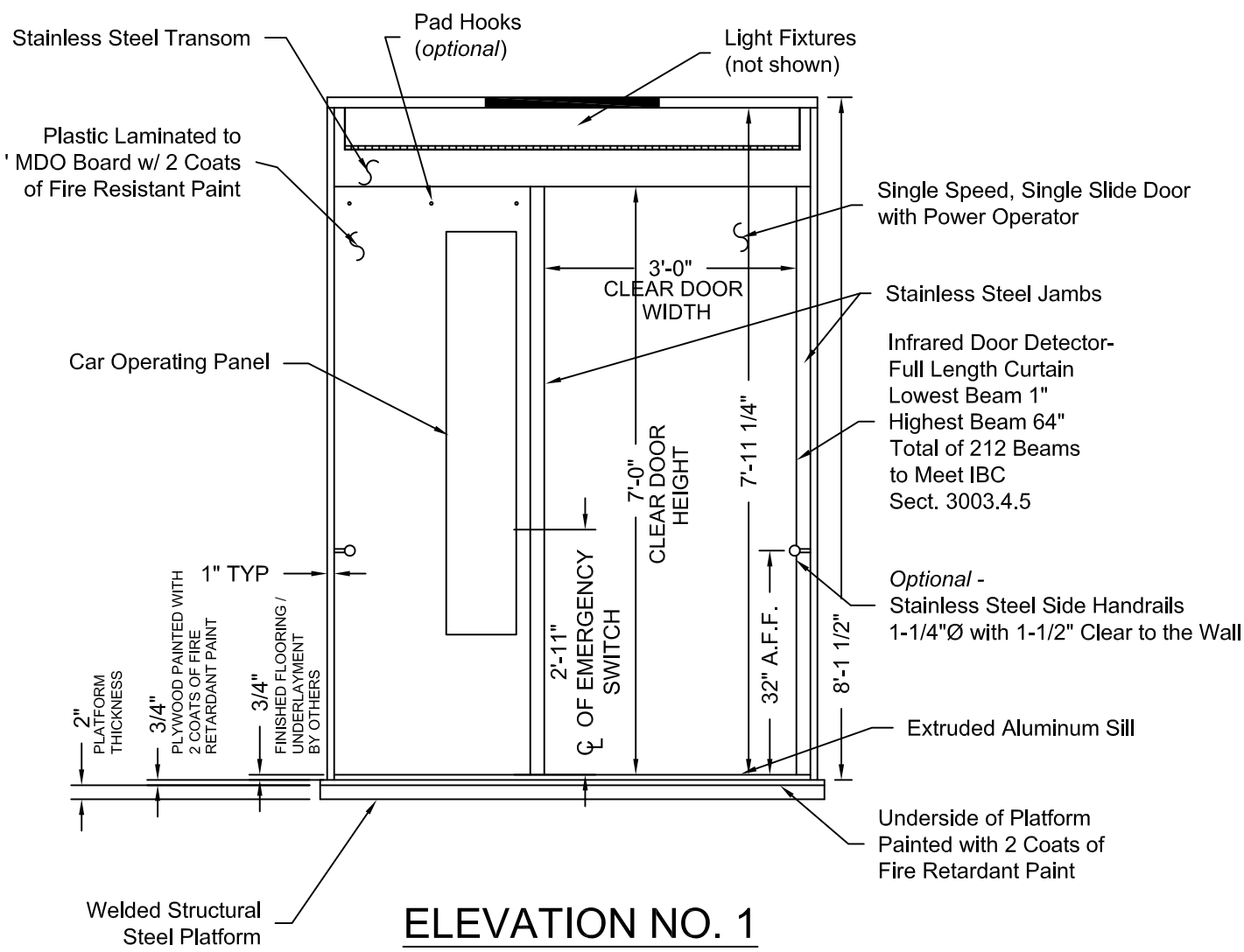
Issue Date:



**PHOENIX MODULAR ELEVATOR INC.**  
4800 PHOENIX DRIVE, MT. VERNON, ILLINOIS 62864  
PHONE: (618)-244-2314 FAX: (618)-244-1923  
E-mail: info@phoenixmodulelevator.com  
Web page: www.phoenixmodulelevator.com

#### CEILING PLAN - front exit elevator car

SIZE A	REV	REV. DATE	FILE NO.
SCALE: N.T.S.	DATE:	DWG NO. CAB-WF-3	



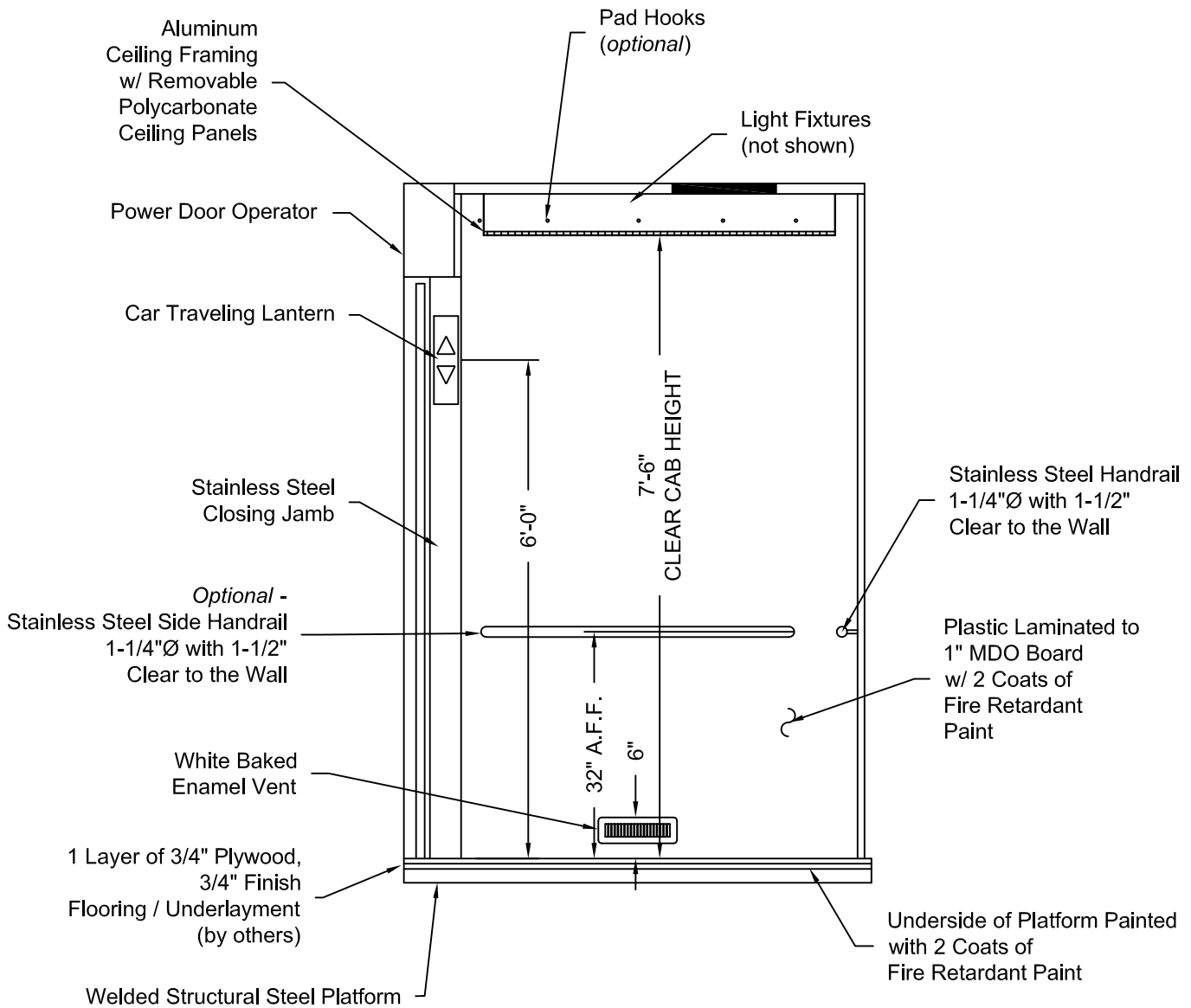
Issue Date:



**PHOENIX MODULAR ELEVATOR INC.**  
 4800 PHOENIX DRIVE, MT. VERNON, ILLINOIS 62864  
 PHONE: (618)-244-2314 FAX: (618)-244-1923  
 E-mail: info@phoenixmodularelevator.com  
 Web page: www.phoenixmodularelevator.com

**ELEVATION NO. 1 - front exit elevator car**

SIZE A	REV	REV. DATE	FILE NO.
SCALE: N.T.S.	DATE:		DWG NO. CAB-WF-4



## ELEVATION NO. 2

Issue Date:

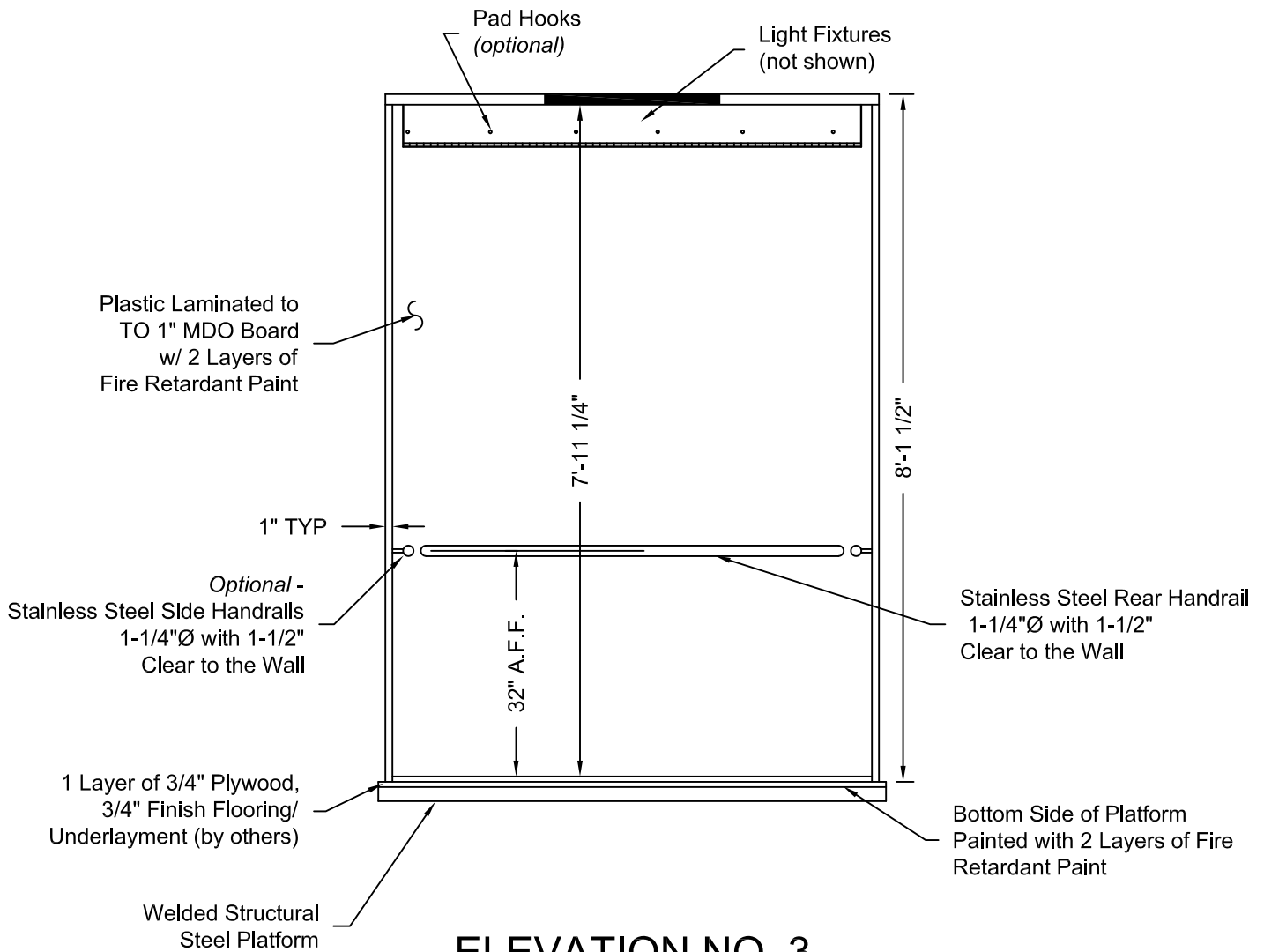


**PHOENIX MODULAR ELEVATOR INC.**  
 4800 PHOENIX DRIVE, MT. VERNON, ILLINOIS 62864  
 PHONE: (618)-244-2314 FAX: (618)-244-1923  
 E-mail: info@phoenixmodularelevator.com  
 Web page: www.phoenixmodularelevator.com

### ELEVATION NO. 2 - front exit elevator car

SIZE A	REV	REV. DATE	FILE NO.
SCALE:	N.T.S.	DATE:	DWG NO. CAB-WF-5





### ELEVATION NO. 3

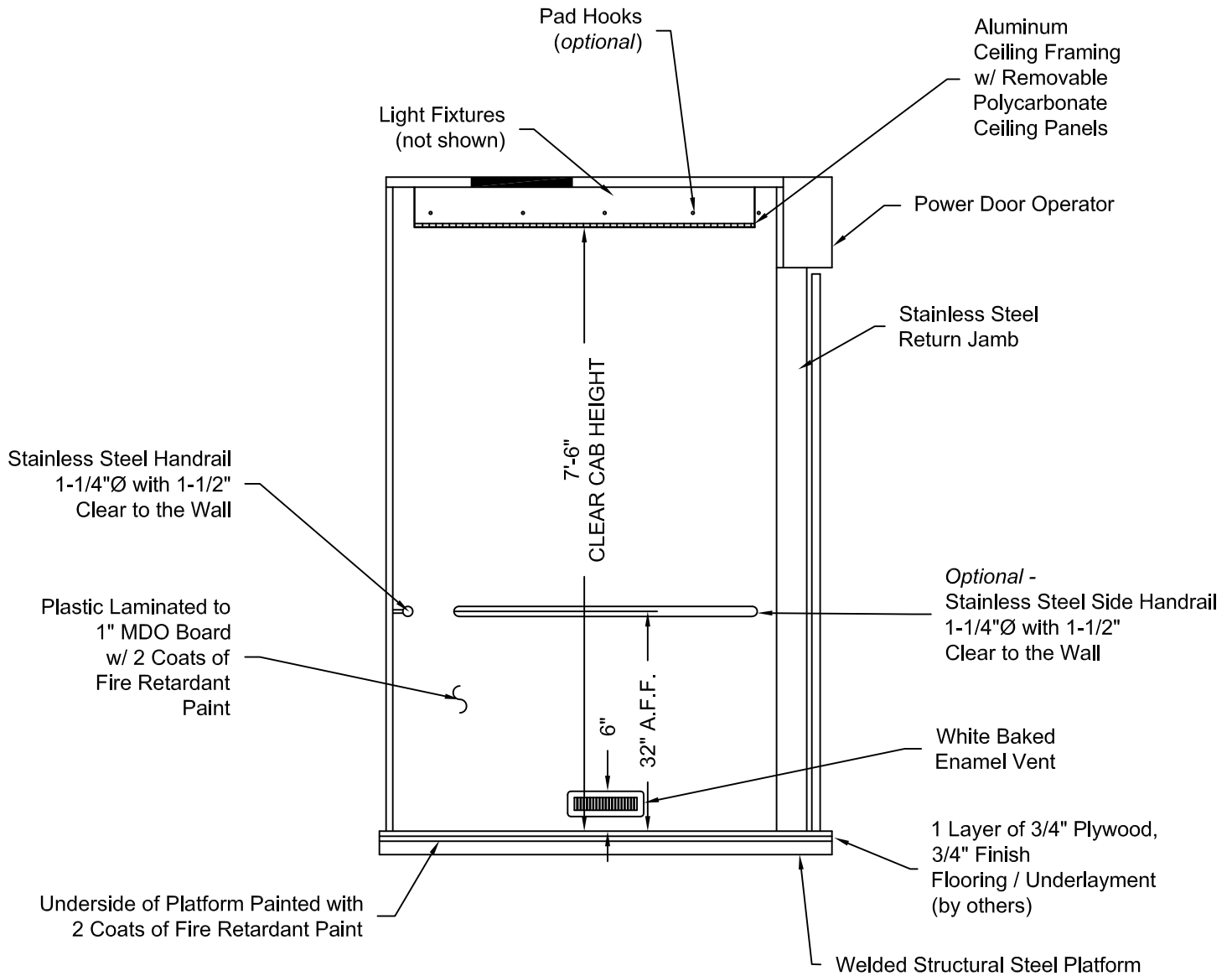
Issue Date:



**PHOENIX MODULAR ELEVATOR INC.**  
 4800 PHOENIX DRIVE, MT. VERNON, ILLINOIS 62864  
 PHONE: (618)-244-2314 FAX: (618)-244-1923  
 E-mail: info@phoenixmodularelevator.com  
 Web page: www.phoenixmodularelevator.com

### ELEVATION NO. 3 - front exit elevator car

SIZE A	REV	REV. DATE	FILE NO.
SCALE: N.T.S.	DATE:	DWG NO. CAB-WF-6	



## ELEVATION NO. 4

Issue Date:



**PHOENIX MODULAR ELEVATOR INC.**  
 4800 PHOENIX DRIVE, MT. VERNON, ILLINOIS 62864  
 PHONE: (618)-244-2314 FAX: (618)-244-1923  
 E-mail: info@phoenixmodularelevator.com  
 Web page: www.phoenixmodularelevator.com

### ELEVATION NO. 4 - front exit elevator car

SIZE A	REV	REV. DATE	FILE NO.
SCALE: N.T.S.	DATE:	DWG NO. CAB-WF-7	