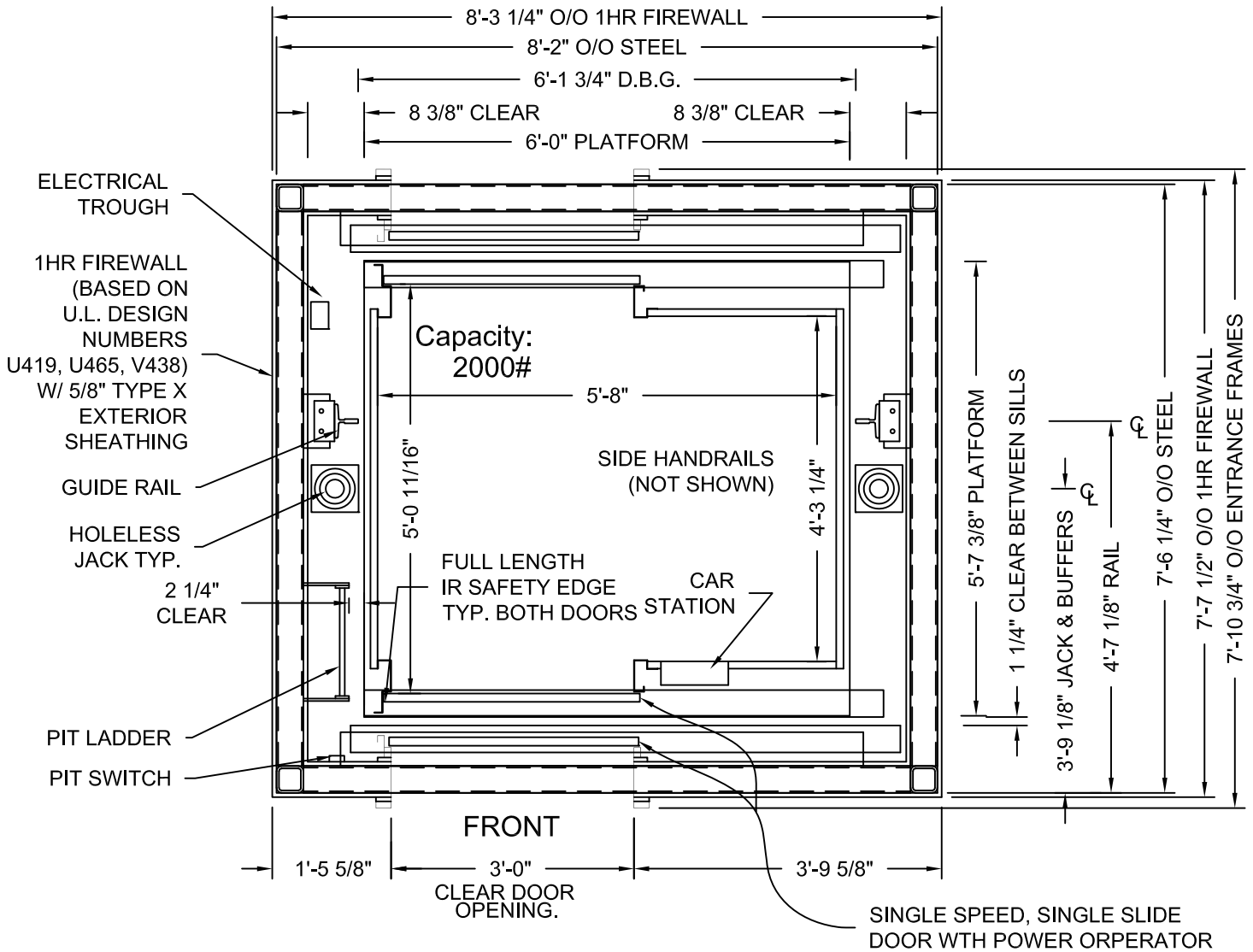


DRAWINGS ARE FOR REFERENCE USE ONLY AND ARE NOT INTENDED FOR PURPOSES OF CONSTRUCTION.

D.B.G. = Distance between guide rails.
O/O = Out to out
W/ = with



HOLELESS JACK SYSTEM SHOWN, HOLED JACK SYSTEM AVAILABLE

MODEL: AC3000/AC4000 WFR
RIGHT HAND EXIT SHOWN - LEFT HAND EXIT OPPOSITE
ONE HOUR SHAFT RATING

ADA COMPLIANT

Issue Date:

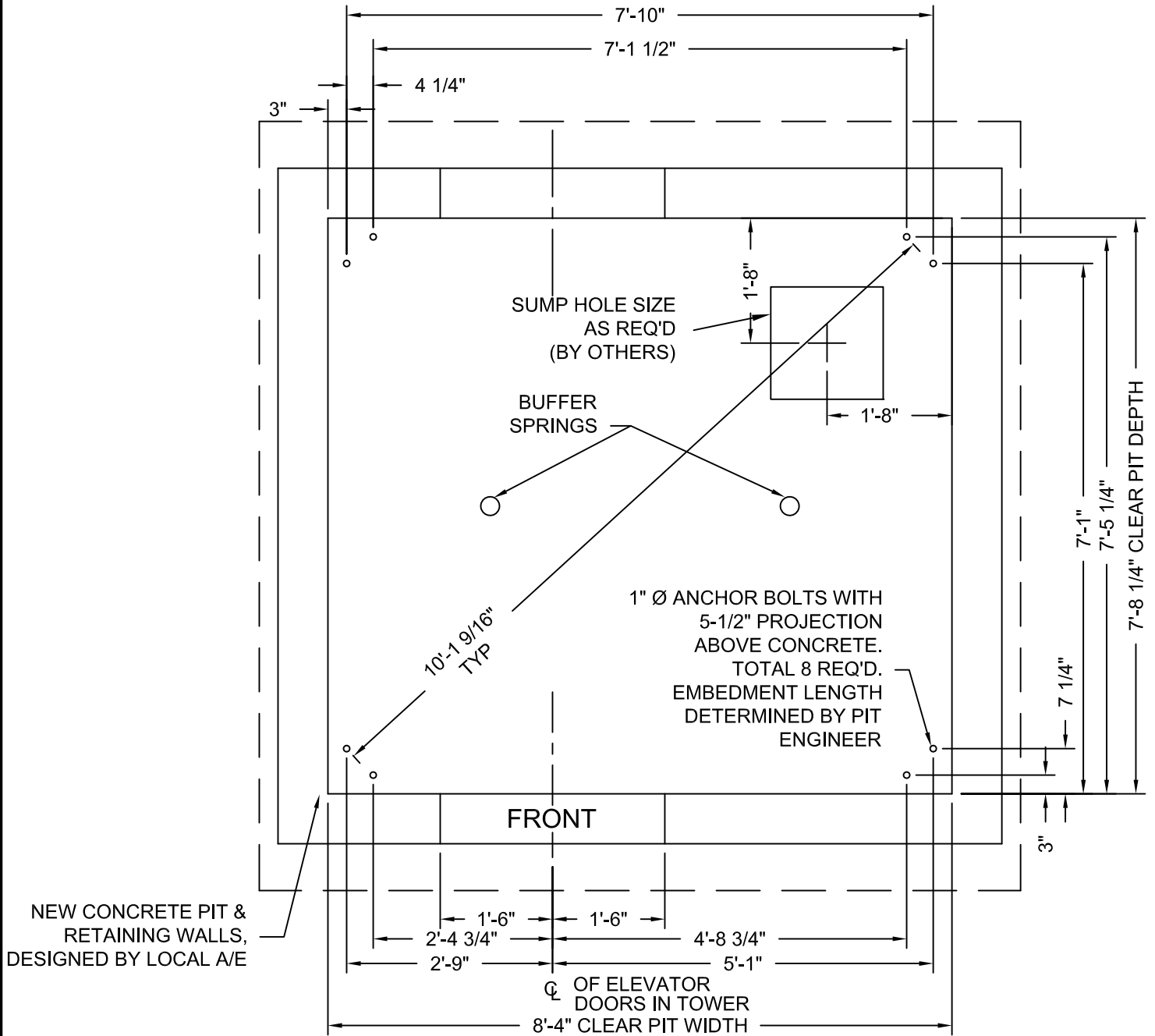


PHOENIX MODULAR ELEVATOR INC.
4800 PHOENIX DRIVE, MT. VERNON, ILLINOIS 62864
PHONE: (618)-244-2314 FAX: (618)-244-1923
E-mail: info@phoenixmodularelevator.com
Web page: www.phoenixmodularelevator.com

HOISTWAY & CAR PLAN - 1HR FIRE RATED HOISTWAY

| | | | |
|----------------------|-------|-----------|----------|
| SIZE A | REV | REV. DATE | FILE NO. |
| SCALE: 1/2"=1'-0" | DATE: | DWG NO. | WFR-1HR |

DRAWINGS ARE FOR
 REFERENCE USE ONLY AND
 ARE NOT INTENDED FOR
 PURPOSES OF
 CONSTRUCTION.



NEW CONCRETE PIT &
 RETAINING WALLS,
 DESIGNED BY LOCAL A/E

MODEL: AC3000 WF / WFR
 RIGHT HAND EXIT SHOWN - LEFT HAND EXIT OPPOSITE

AC4000 TYPICALLY USES HOLED
 JACK. ONLY UNDER CERTAIN
 CIRCUMSTANCES CAN HOLELESS
 JACKS BE USED.

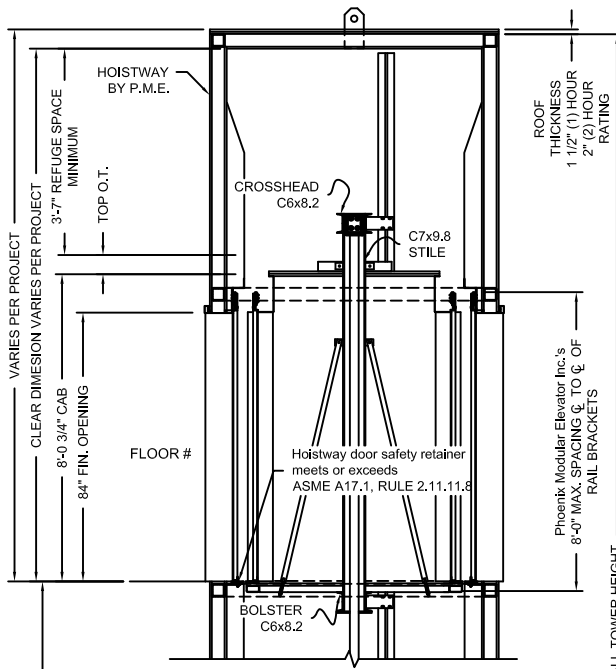
Issue Date:



PHOENIX MODULAR ELEVATOR INC.
 4800 PHOENIX DRIVE, MT. VERNON, ILLINOIS 62864
 PHONE: (618)-244-2314 FAX: (618)-244-1923
 E-mail: Info@phoenixmodularelevator.com
 Web page: www.phoenixmodularelevator.com

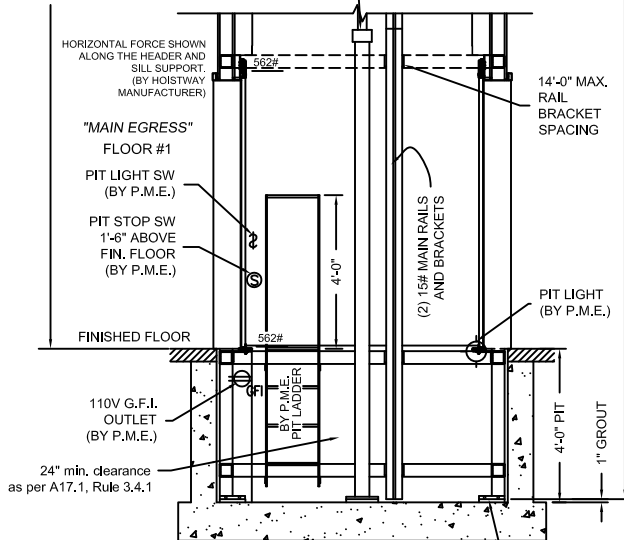
MODEL WF / WFR PIT PLAN - HOLELESS JACKS

| | | | |
|----------------------|-------|-----------|----------|
| SIZE A | REV | REV. DATE | FILE NO. |
| SCALE: 1/2"=1'-0" | DATE: | DWG NO. | WX-P2 |



| FLOOR TO FLOOR DISTANCE | FLOOR MARKING | FLOOR NUMBER |
|-------------------------|-------------------|--------------|
| VARIABLES | 4 | 4 |
| VARIABLES | 3 | 3 |
| VARIABLES | 2 | 2 |
| VARIABLES | 1 ☆ | 1 |
| VARIABLES | NET FLOOR TRAVEL | |
| VARIABLES | TOP OVERTRAVEL | |
| 9-1/2" TYP | BOTTOM OVERTRAVEL | |
| VARIABLES | TOTAL TRAVEL | |

(2) TWIN JACKS
 PISTON LENGTH = to be determined
 CYLINDER LENGTH = to be determined
 CLEARANCE PROVIDED BETWEEN PISTON & CYLINDER WHEN CAR IS ON COMPRESSED SPRINGS IS 1"



BOND WIRE LUG BY P.M.E.
 WIRE & GROUND ROD BY OTHERS
 PER N.E.C.

Non-shrink grout must be placed under tower column base plates and around jacks after installation (BY OTHERS)

SECTION VIEW

NOT TO SCALE

The section view is for informational / dimensional data. See the hoistway plan view for actual equipment locations.

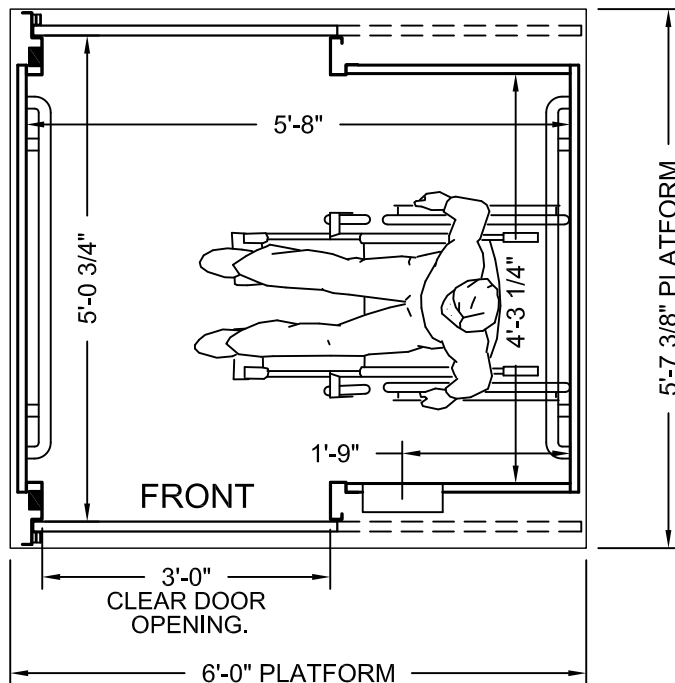
Issue Date:



PHOENIX MODULAR ELEVATOR INC.
 4800 PHOENIX DRIVE, MT. VERNON, ILLINOIS 62864
 PHONE: (618)-244-2314 FAX: (618)-244-1923
 E-mail: info@phoenixmodularelevator.com
 Web page: www.phoenixmodularelevator.com

SECTION VIEW FOR HOLELESS JACK SYSTEM

| | | | |
|------------------|-------|----------------------|----------|
| SIZE A | REV | REV. DATE | FILE NO. |
| SCALE: N.T.S. | DATE: | DWG NO. SV-TJ/TTJ | |



PLAN VIEW

P.M.E.'s typical front/rear standard size elevator car.
Capacity = 2000 lbs.

Car enclosure - laminate on wood
*All material for car enclosures meet the requirements of
ASME A17.1 RULE 2.14.2.1*

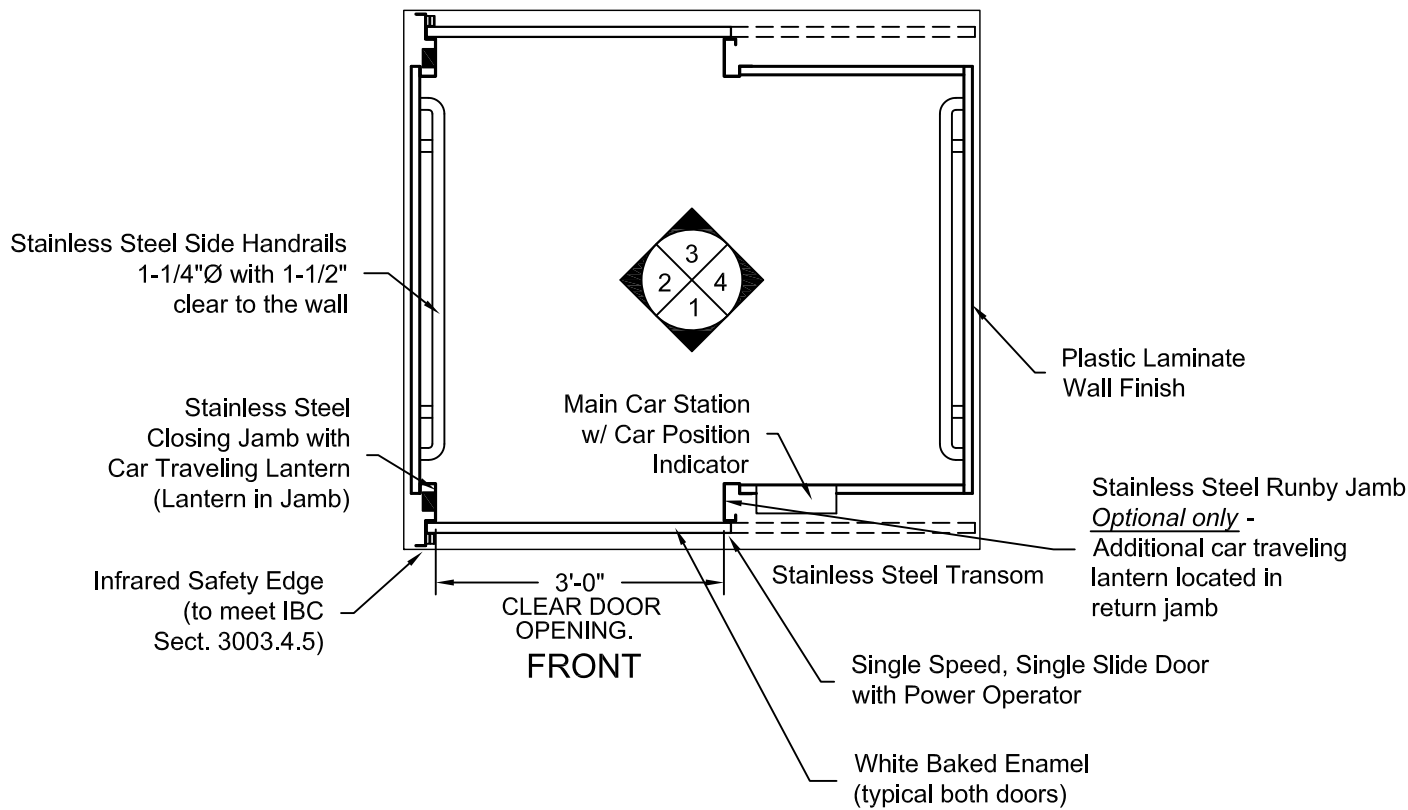
Issue Date:



PHOENIX MODULAR ELEVATOR INC.
4800 PHOENIX DRIVE, MT. VERNON, ILLINOIS 62864
PHONE: (618)-244-2314 FAX: (618)-244-1923
E-mail: info@phoenixmodularelevator.com
Web page: www.phoenixmodularelevator.com

FRONT/REAR EXIT ELEVATOR CAB

| | | | |
|------------------|-------|----------------------|----------|
| SIZE A | REV | REV. DATE | FILE NO. |
| SCALE: N.T.S. | DATE: | DWG NO. CAB-WFR-1 | |



PLAN VIEW
RIGHT FRONT DOOR
(MIRROR IMAGE IS AVAILABLE)

Issue Date:

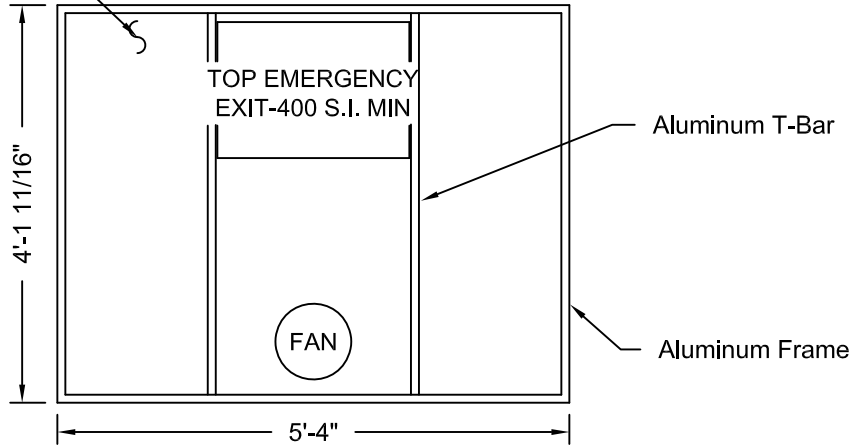


PHOENIX MODULAR ELEVATOR INC.
 4800 PHOENIX DRIVE, MT. VERNON, ILLINOIS 62864
 PHONE: (618)-244-2314 FAX: (618)-244-1923
 E-mail: info@phoenixmodularelevator.com
 Web page: www.phoenixmodularelevator.com

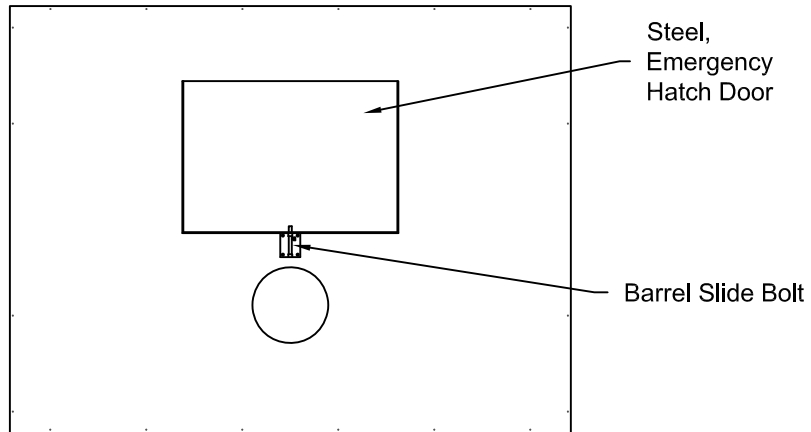
FRONT/REAR EXIT ELEVATOR CAB - PLAN VIEW

| | | | |
|------------------|-------|----------------------|----------|
| SIZE A | REV | REV. DATE | FILE NO. |
| SCALE: N.T.S. | DATE: | DWG NO. CAB-WFR-2 | |

Removable Polycarbonate Ceiling Panels



REFLECTIVE CEILING PLAN



**ROOF PLAN VIEW
EMERGENCY EXIT DOOR**

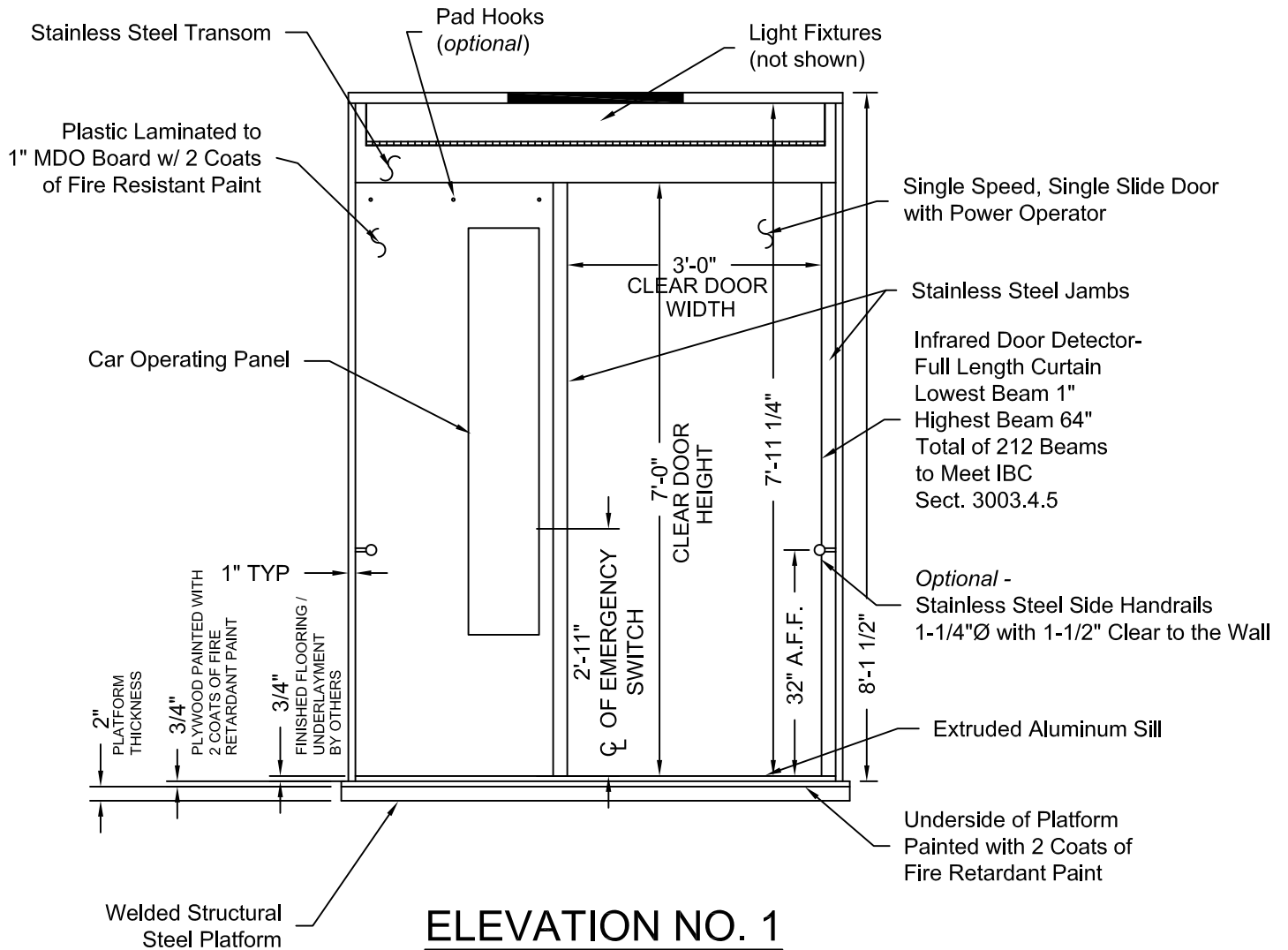
Issue Date:



PHOENIX MODULAR ELEVATOR INC.
 4800 PHOENIX DRIVE, MT. VERNON, ILLINOIS 62864
 PHONE: (618)-244-2314 FAX: (618)-244-1923
 E-mail: info@phoenixmodularelevator.com
 Web page: www.phoenixmodularelevator.com

CEILING PLAN - front/rear exit elevator car

| | | | |
|------------------|-------|----------------------|----------|
| SIZE A | REV | REV. DATE | FILE NO. |
| SCALE: N.T.S. | DATE: | DWG NO. CAB-WFR-3 | |



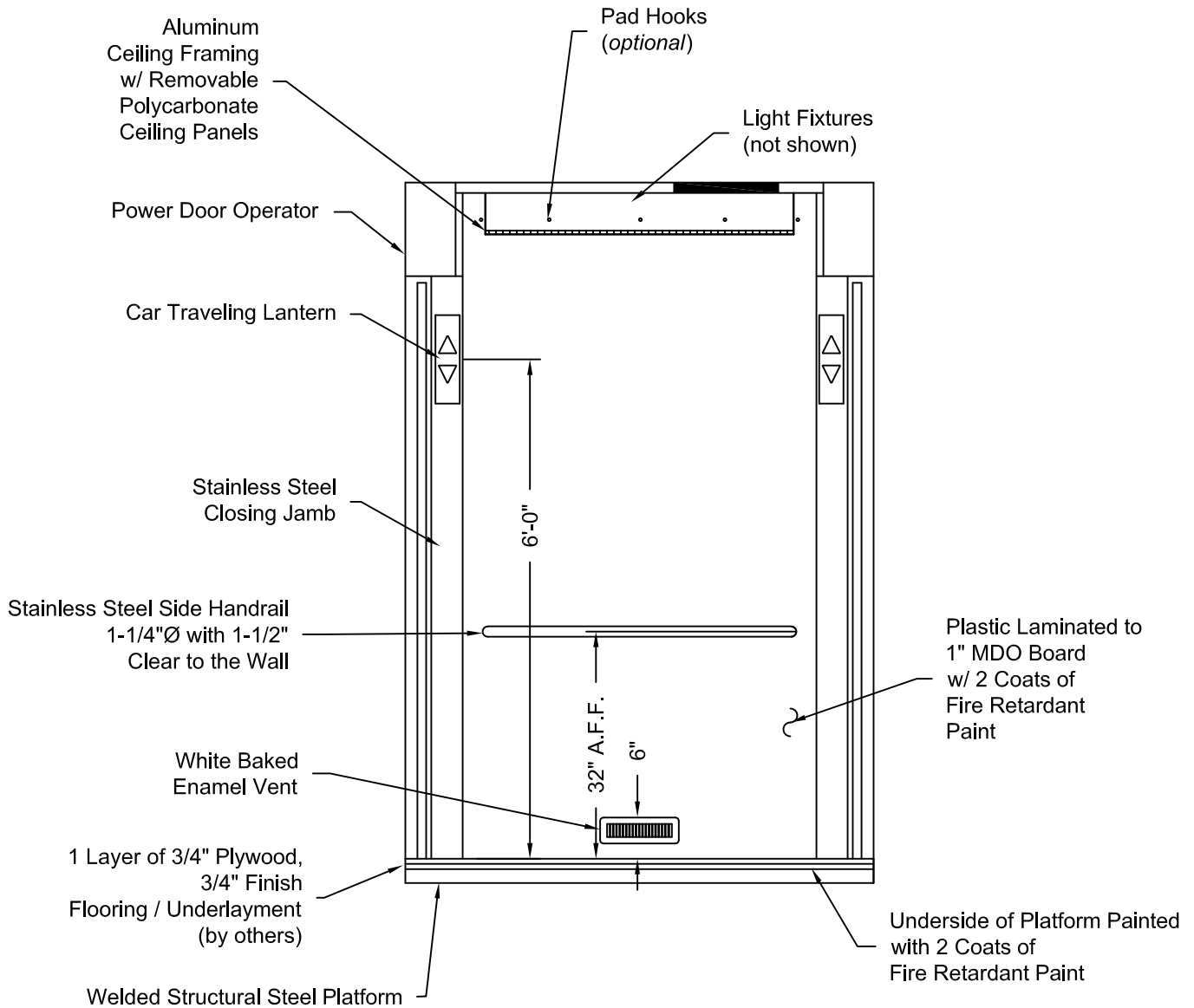
Issue Date:



PHOENIX MODULAR ELEVATOR INC.
 4800 PHOENIX DRIVE, MT. VERNON, ILLINOIS 62864
 PHONE: (618)-244-2314 FAX: (618)-244-1923
 E-mail: info@phoenixmodularelevator.com
 Web page: www.phoenixmodularelevator.com

ELEVATION NO. 1 - front/rear exit elevator car

| | | | |
|------------------|-------|-----------|----------------------|
| SIZE A | REV | REV. DATE | FILE NO. |
| SCALE: N.T.S. | DATE: | | DWG NO. CAB-WFR-4 |



ELEVATION NO. 2

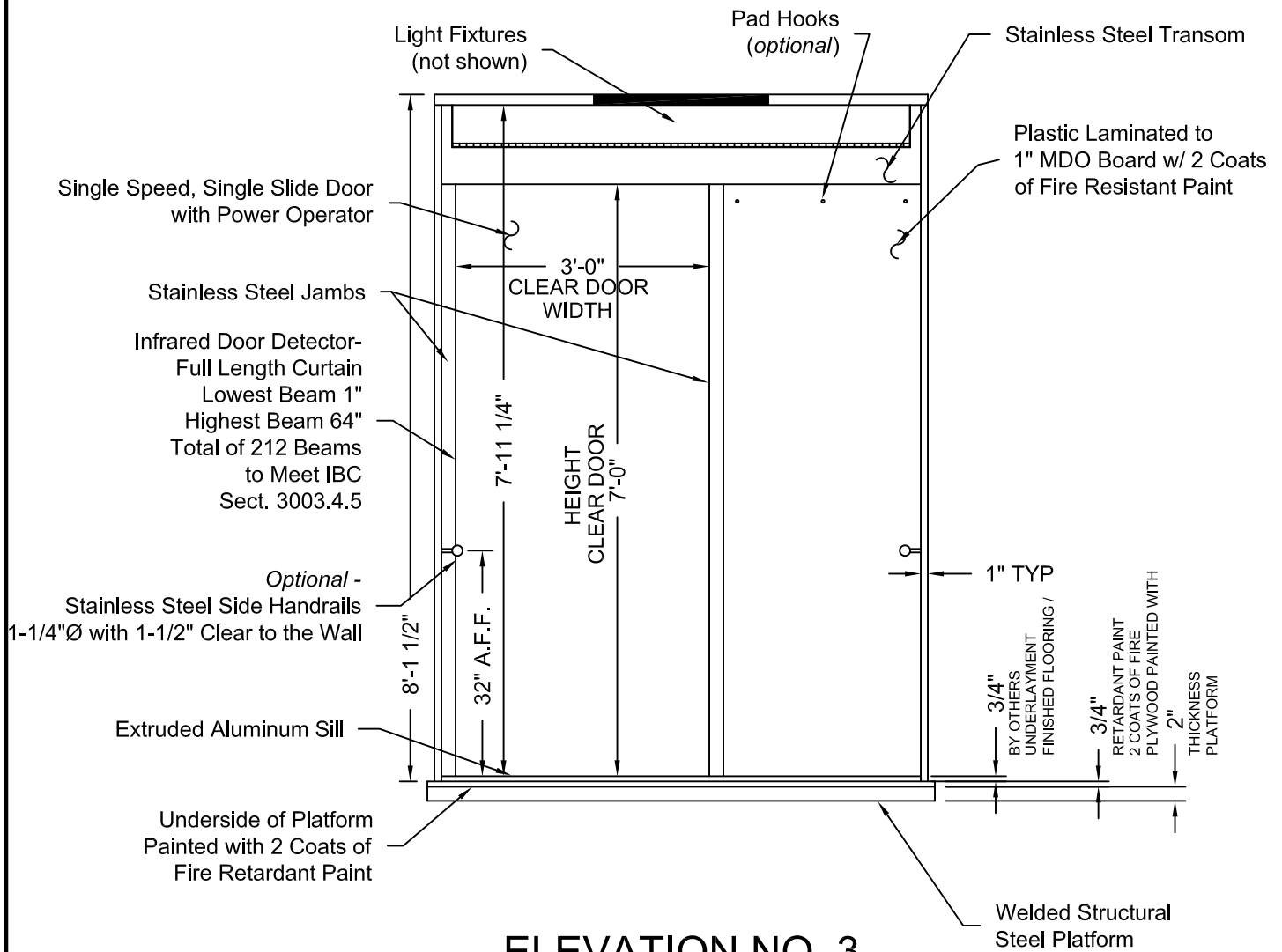
Issue Date:



PHOENIX MODULAR ELEVATOR INC.
 4800 PHOENIX DRIVE, MT. VERNON, ILLINOIS 62864
 PHONE: (618)-244-2314 FAX: (618)-244-1923
 E-mail: info@phoenixmodularelevator.com
 Web page: www.phoenixmodularelevator.com

ELEVATION NO. 2 - front/rear exit elevator car

| | | | |
|---------------|-----|-----------|-------------------|
| SIZE A | REV | REV. DATE | FILE NO. |
| SCALE: N.T.S. | | DATE: | DWG NO. CAB-WFR-5 |



ELEVATION NO. 3

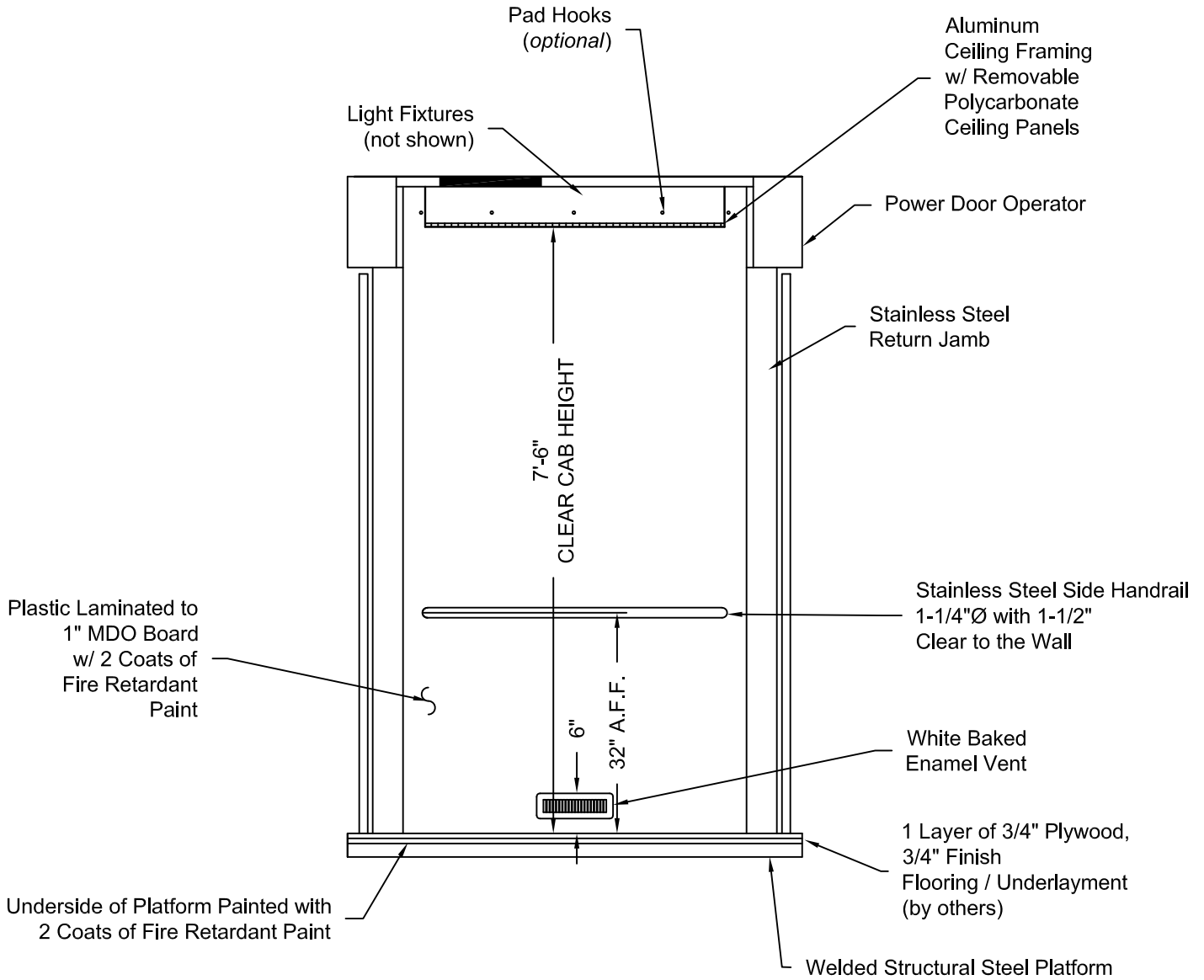
Issue Date:



PHOENIX MODULAR ELEVATOR INC.
 4800 PHOENIX DRIVE, MT. VERNON, ILLINOIS 62864
 PHONE: (618)-244-2314 FAX: (618)-244-1923
 E-mail: info@phoenixmodularelevator.com
 Web page: www.phoenixmodularelevator.com

ELEVATION NO. 3 - front/rear exit elevator car

| | | | |
|------------------|-------|----------------------|----------|
| SIZE A | REV | REV. DATE | FILE NO. |
| SCALE: N.T.S. | DATE: | DWG NO. CAB-WFR-6 | |



ELEVATION NO. 4

Issue Date:



PHOENIX MODULAR ELEVATOR INC.
 4800 PHOENIX DRIVE, MT. VERNON, ILLINOIS 62864
 PHONE: (618)-244-2314 FAX: (618)-244-1923
 E-mail: info@phoenixmodularelevator.com
 Web page: www.phoenixmodularelevator.com

ELEVATION NO. 4 - front/rear exit elevator car

| | | | |
|------------------|-------|-----------|----------------------|
| SIZE A | REV | REV. DATE | FILE NO. |
| SCALE: N.T.S. | DATE: | | DWG NO. CAB-WFR-7 |