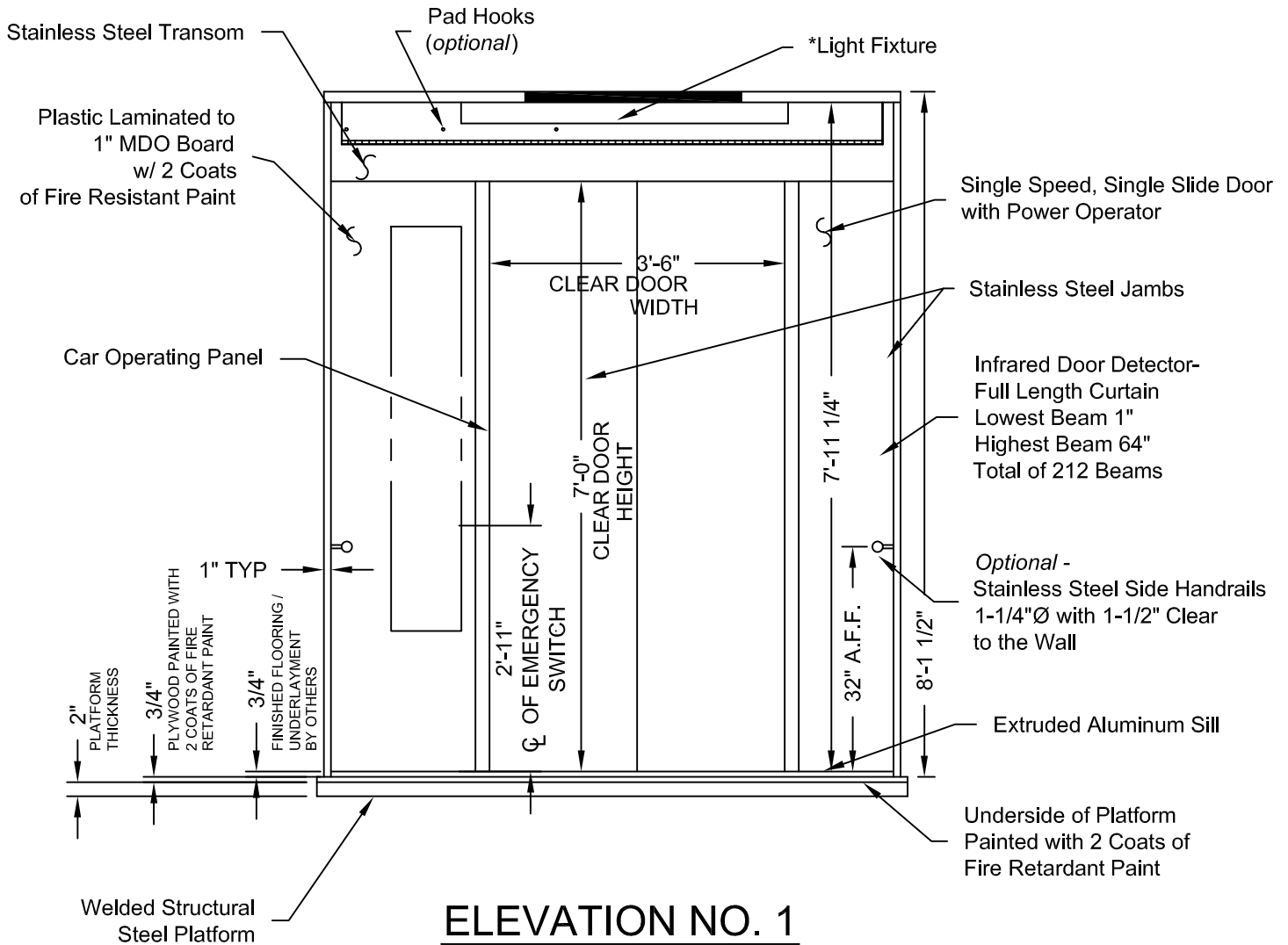


* - LIGHT BULBS & COVERS SUPPLIED BY OTHERS



Issue Date: 7/1/10

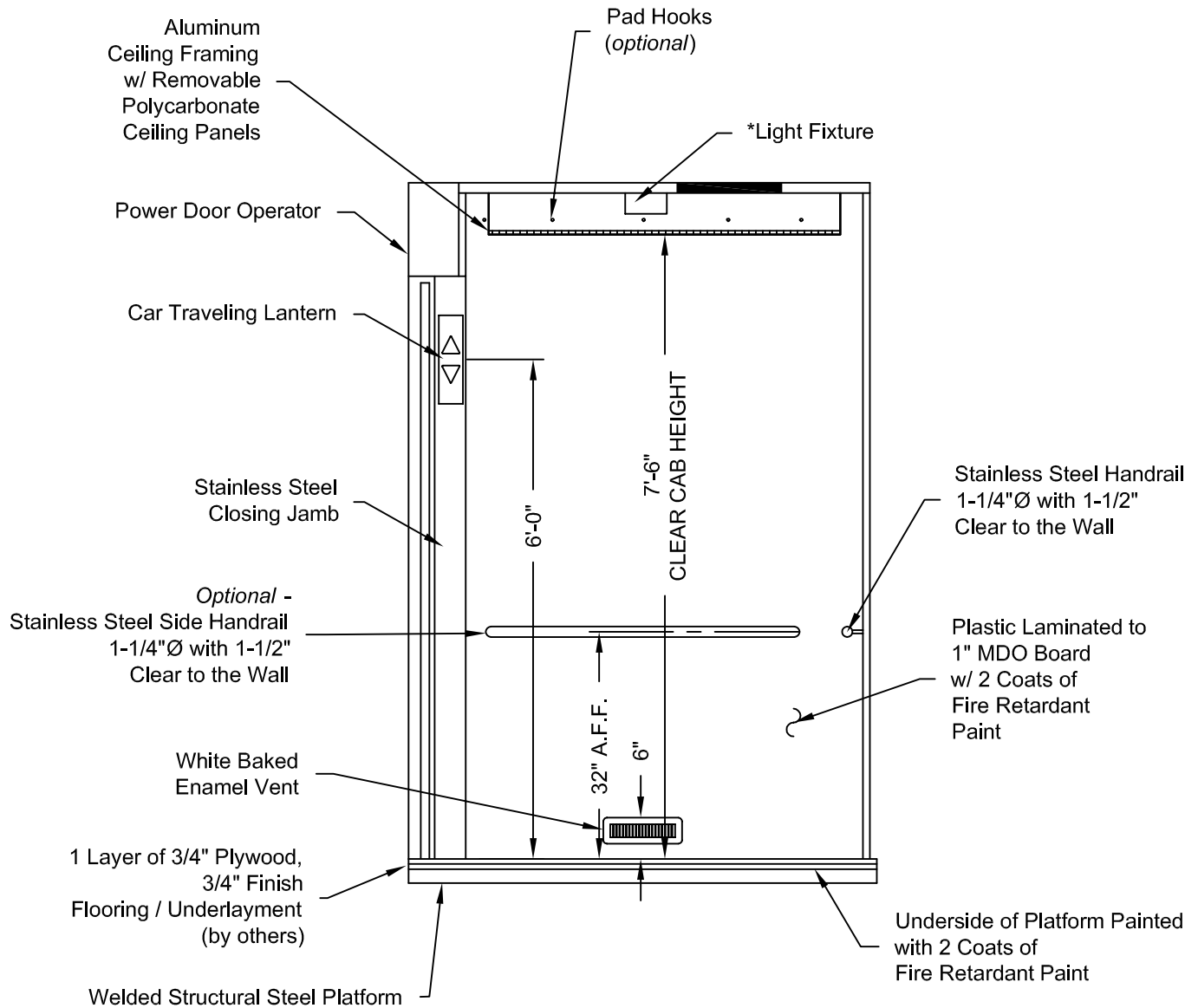


PHOENIX MODULAR ELEVATOR INC.
 912 SOUTH 19TH ST. MT. VERNON, ILLINOIS 62864
 PHONE: (618)-244-2314 FAX: (618)-244-1923
 E-mail: info@phoenixmodularelevator.com
 Web page: www.phoenixmodularelevator.com

ELEVATION NO. 1 - front exit elevator car

SIZE A	REV	REV. DATE	FILE NO.
SCALE: N.T.S.	DATE: 2/23/05	T.H.	DWG NO. SCF-C4

* - LIGHT BULBS & COVERS SUPPLIED BY OTHERS



ELEVATION NO. 2

Issue Date: 7/1/10

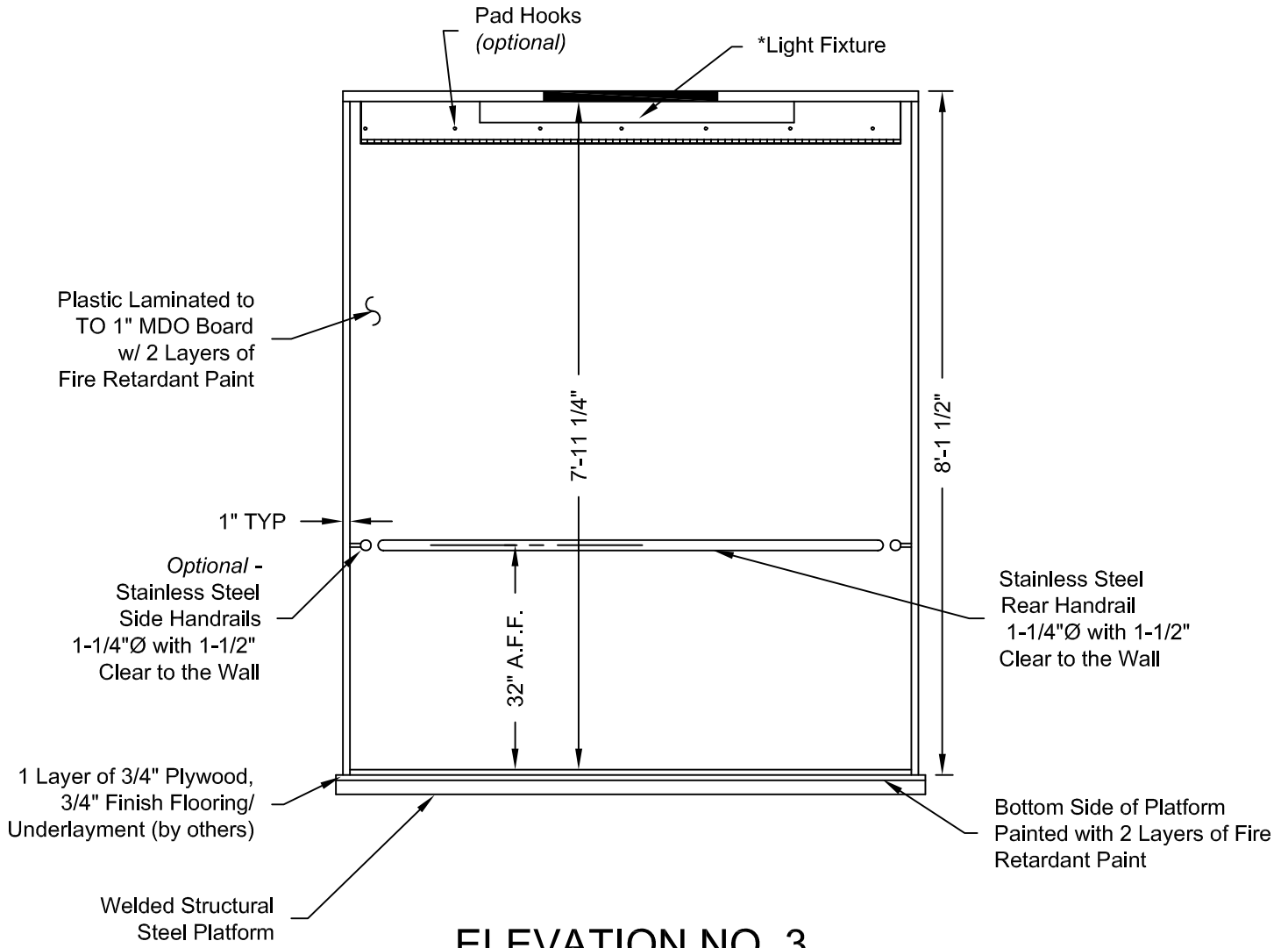


PHOENIX MODULAR ELEVATOR INC.
 912 SOUTH 19TH ST. MT. VERNON, ILLINOIS 62864
 PHONE: (618)-244-2314 FAX: (618)-244-1923
 E-mail: info@phoenixmodularelevator.com
 Web page: www.phoenixmodularelevator.com

ELEVATION NO. 2 - front exit elevator car

SIZE A	REV	REV. DATE	FILE NO.
SCALE: N.T.S.	DATE: 2/23/05	T.H.	DWG NO. SCF-C5

* - LIGHT BULBS & COVERS SUPPLIED BY OTHERS



ELEVATION NO. 3

Issue Date: 7/1/10

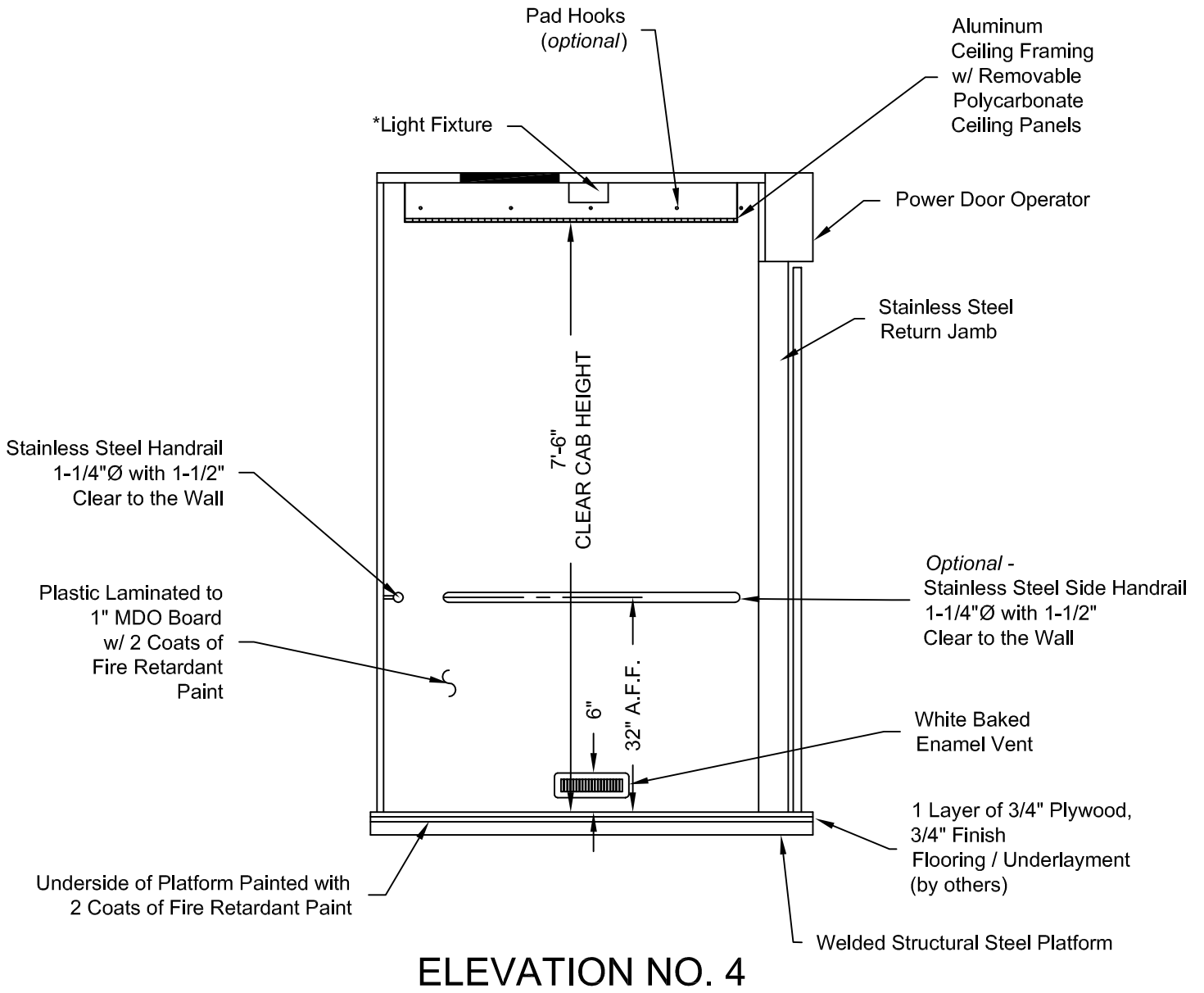


PHOENIX MODULAR ELEVATOR INC.
 912 SOUTH 19TH ST. MT. VERNON, ILLINOIS 62864
 PHONE: (618)-244-2314 FAX: (618)-244-1923
 E-mail: info@phoenixmodularelevator.com
 Web page: www.phoenixmodularelevator.com

ELEVATION NO.3 - front exit elevator car

SIZE A	REV	REV. DATE	FILE NO.
SCALE: N.T.S.	DATE: 2/23/05 T.H.	DWG NO. SCF-C6	

* - LIGHT BULBS & COVERS SUPPLIED BY OTHERS



Issue Date: 7/1/10



PHOENIX MODULAR ELEVATOR INC.
 912 SOUTH 19TH ST, MT. VERNON, ILLINOIS 62864
 PHONE: (618)-244-2314 FAX: (618)-244-1923
 E-mail: info@phoenixmodularelevator.com
 Web page: www.phoenixmodularelevator.com

ELEVATION NO. 4 - front exit elevator car

SIZE A	REV	REV. DATE	FILE NO.
SCALE: N.T.S.	DATE: 2/23/05	T.H.	DWG NO. SCF-C7