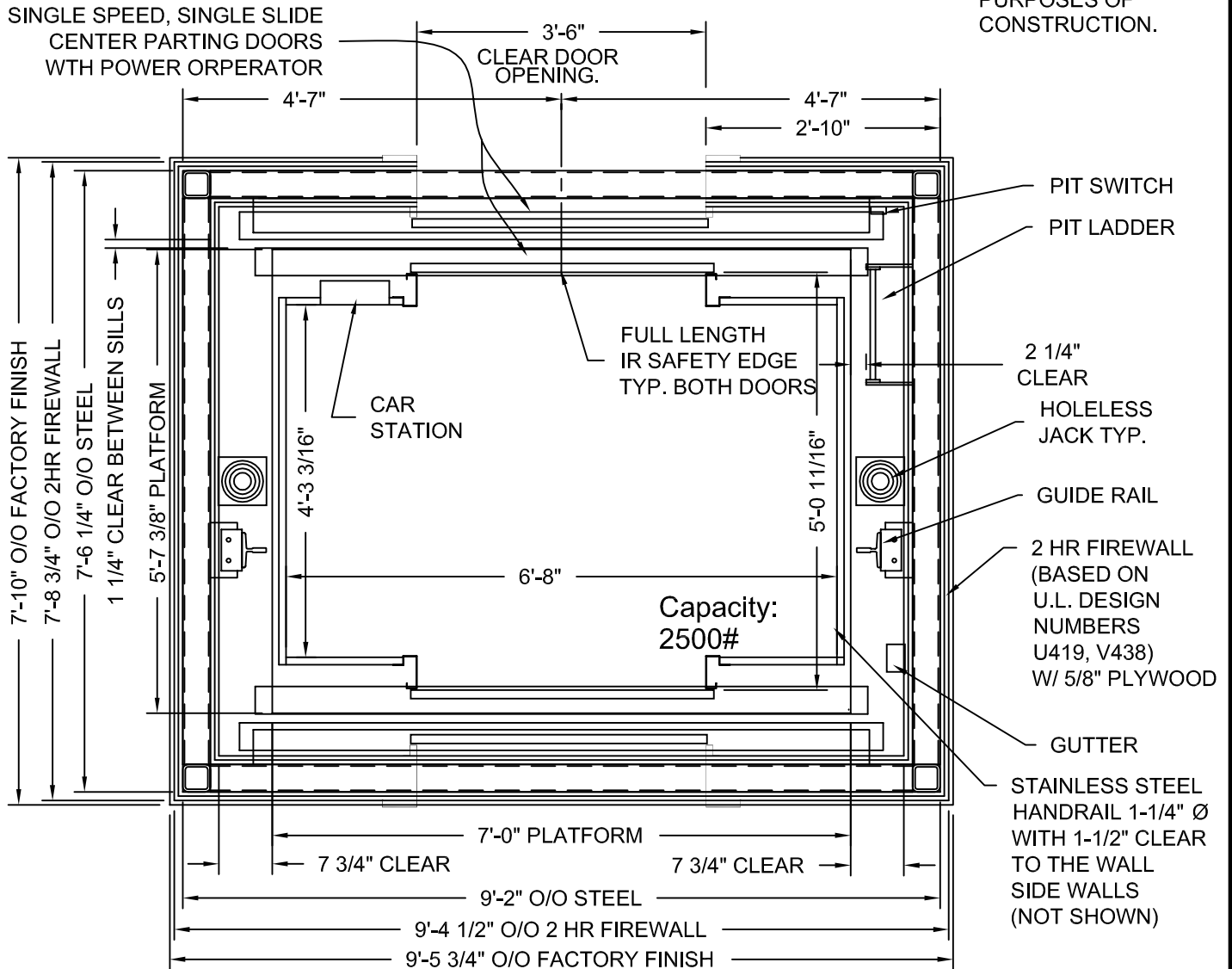


IS NOT GURNEY/STRETCHER COMPLIANT

NET INSIDE CAB AREA - 28.44 SQ FT

DRAWINGS ARE FOR REFERENCE USE ONLY AND ARE NOT INTENDED FOR PURPOSES OF CONSTRUCTION.



HOLELESS JACK SYSTEM SHOWN, HOLED JACK SYSTEM AVAILABLE

MODEL: AC3000/AC4000 SCFR
 CENTER PARTING - FRONT/REAR EXIT
 TWO HOUR RATED SHAFT

ADA COMPLIANT

Issue Date: 6/24/10



PHOENIX MODULAR ELEVATOR INC.
 912 SOUTH 19TH ST. MT. VERNON, ILLINOIS 62864
 PHONE: (618)-244-2314 FAX: (618)-244-1923
 E-mail: info@phoenixmodularelevator.com
 Web page: www.phoenixmodularelevator.com

HOISTWAY & CAR PLAN - 2HR FIRE RATED HOISTWAY

| | | | |
|----------------------|-------------------|-----------|---------------------|
| SIZE A | REV | REV. DATE | FILE NO. |
| SCALE: 1/2"=1'-0" | DATE: 08/14/00 | M.H. | DWG NO. SCFR-2HR |