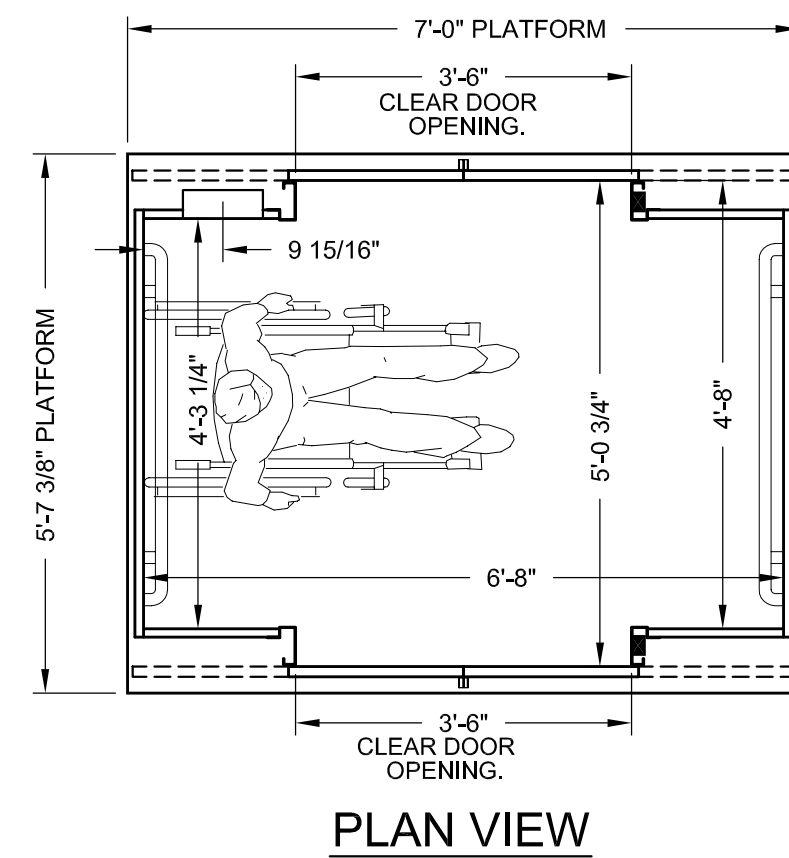
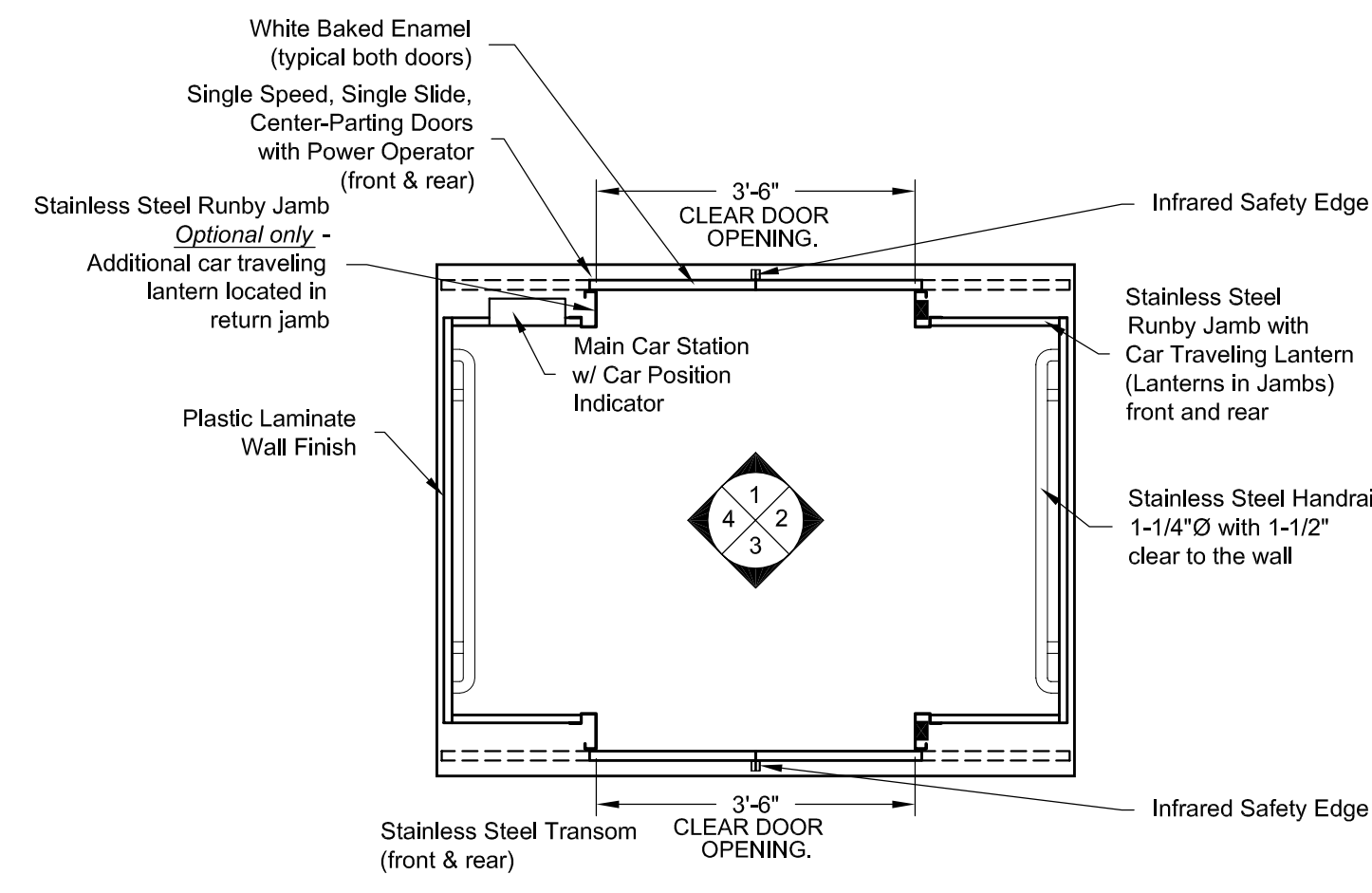


- CAB DOOR DESIGNATIONS REFERENCED FROM INSIDE OF CAB -

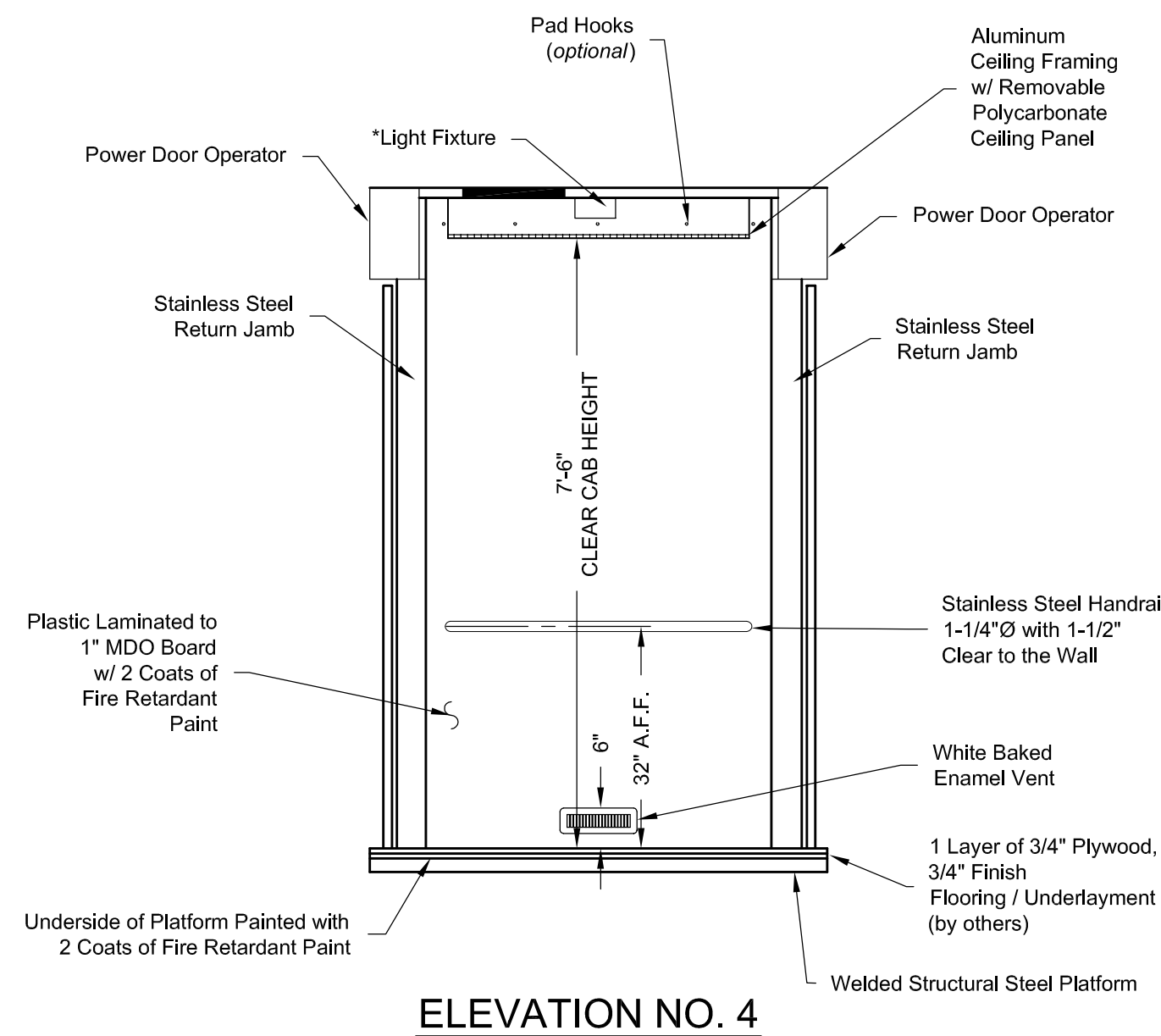
* - LIGHT BULBS & COVERS SUPPLIED BY OTHERS



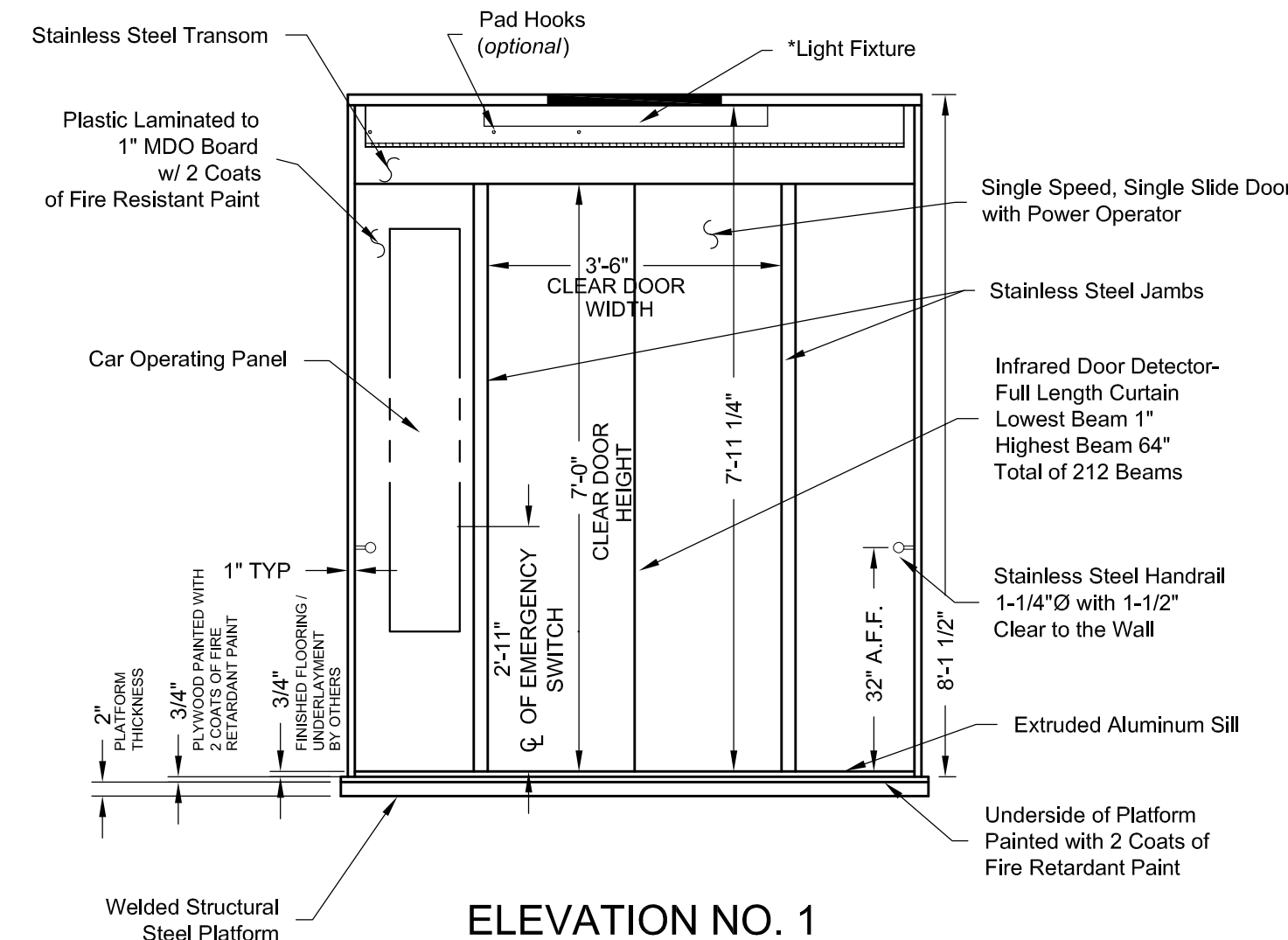
PLAN VIEW



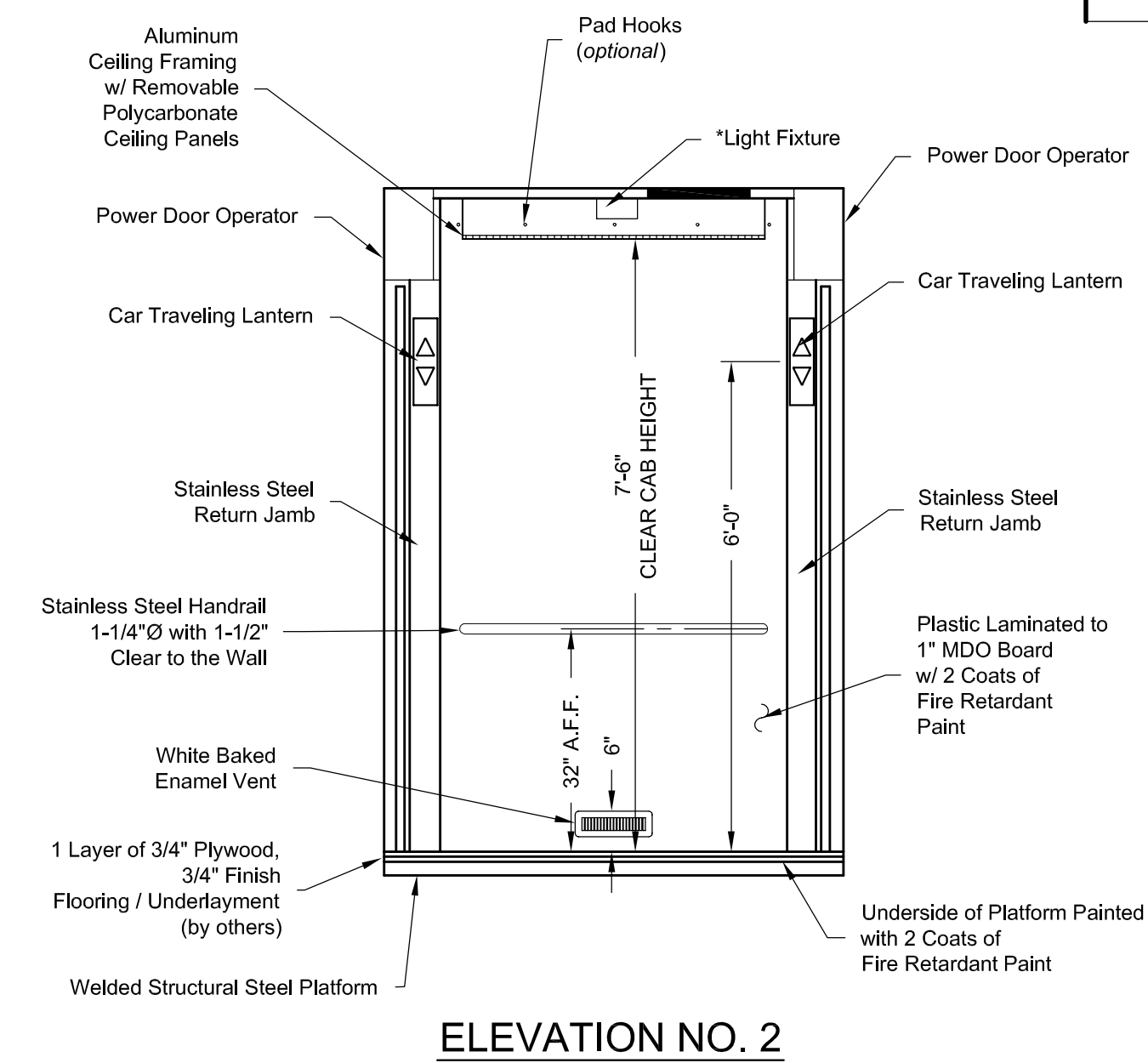
PLAN VIEW
RIGHT FRONT / LEFT REAR DOOR
(MIRROR IMAGE IS AVAILABLE)



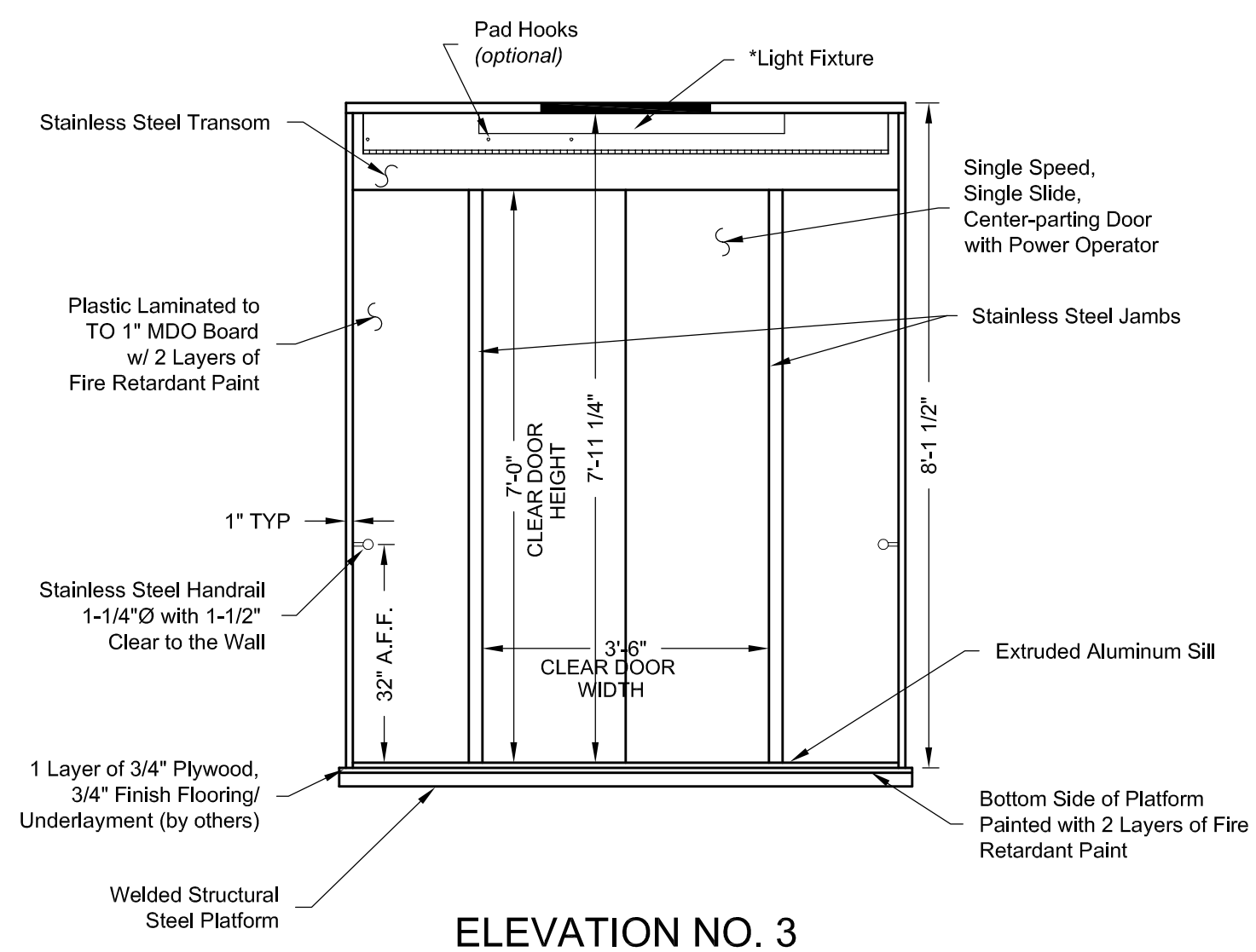
ELEVATION NO. 4



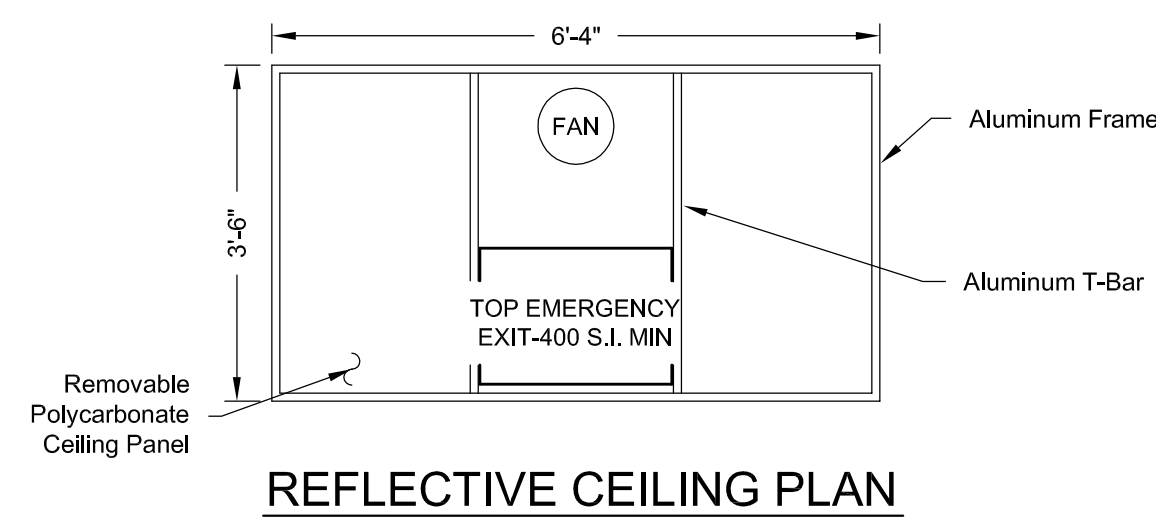
ELEVATION NO. 1



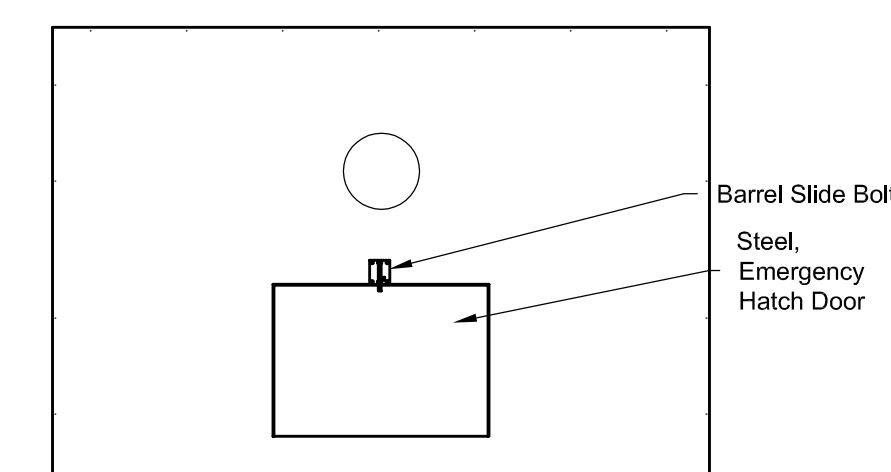
ELEVATION NO. 2



ELEVATION NO. 3



REFLECTIVE CEILING PLAN



ROOF PLAN VIEW
EMERGENCY EXIT DOOR

PASSENGER ELEVATOR CAR

CAB CANOPY: (2) LAYERS OF 3/4" PLYWOOD WITH EXTERIOR SURFACES PAINTED WITH FIRE RETARDANT PAINT
DOOR PANEL(S): 16 GAUGE REINFORCED HOLLOW METAL. CAR SIDE FINISH (SEE BELOW)
FRONT RETURN WALL: 1" PREMIUM PARTICLE BOARD CLAD WITH PLASTIC LAMINATE (FINISH AS SELECTED BELOW) CONTAINING CAR OPERATING STATION
CAR WALLS: 1" PREMIUM PARTICLE BOARD CLAD WITH PLASTIC LAMINATE (FINISH AS SELECTED BELOW) WITH REMAINING SURFACE PAINTED WITH TWO COATS OF FIRE RETARDANT PAINT.
SUSPENDED ISLAND CEILING: CEILING TILES - REMOVABLE TWIN WALL POLYCARBONATE CEILING FRAME - ALUMINUM TEE
LIGHTING: FLUORESCENT TUBES ABOVE CEILING TILES TWO FIXTURES (BULBS AND COVERS BY OTHERS) NOTE: EMERGENCY CAR LIGHTING IS PROVIDED (BUILT INTO CAR STATION)
CAR CONSTRUCTION AND MATERIALS USED MEET ALL APPLICABLE CODES.
TRANSOM AND JAMB FINISH: #4 SATIN - STAINLESS STEEL
CAR DOOR FINISH: WHITE ENAMEL
WALL FINISH: WILSONART BRAND PROJECT-SPECIFIC
HANDRAIL @ SIDE WALLS 1-1/4"Ø - #4SS
1 - SPEED EXHAUST FAN

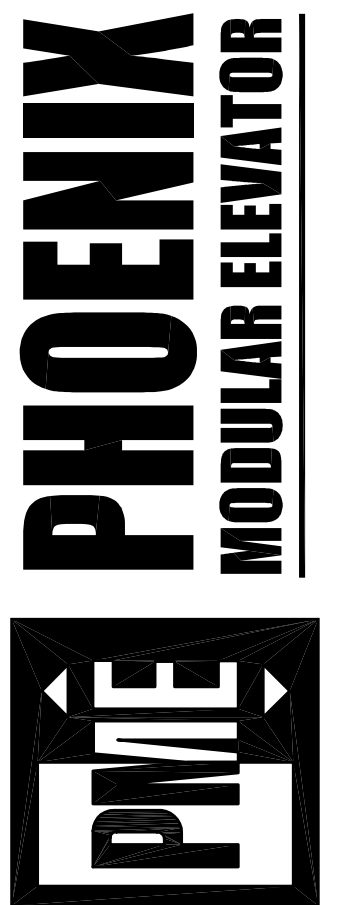
CAPACITY RATING - 2500#

All material for car enclosures shall meet the requirements of ASME A17.1, Sect. 2.14.2

NO.	DATE	BY
REVISIONS		

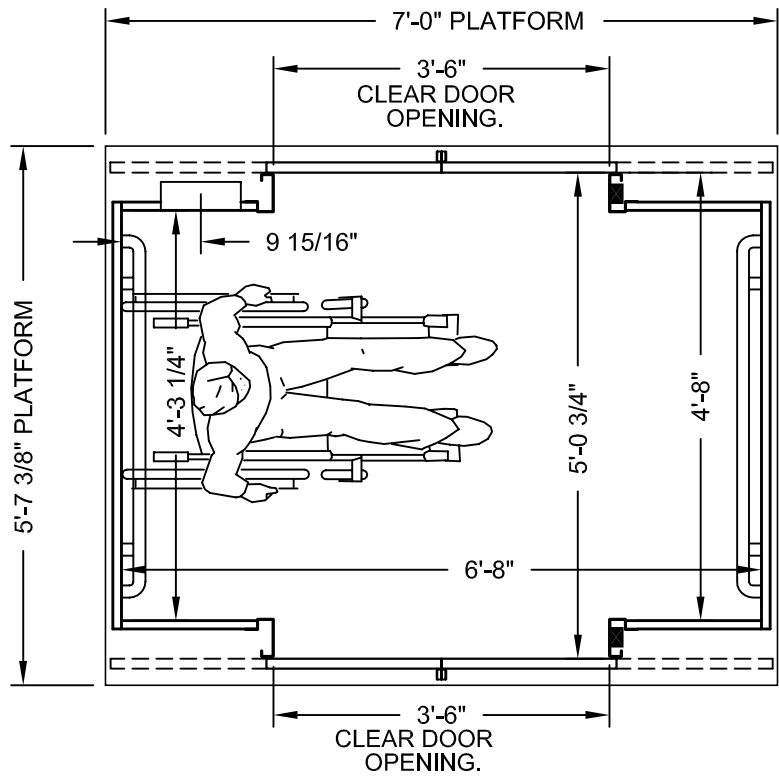
FRONT / REAR EXIT
ADA COMPLIANT
CENTER-PARTING DOORS

912 SOUTH 19TH ST.
 MT. VERNON, ILLINOIS 62864
 PHONE: (618) 244-2314
 FAX: (618) 244-1923
 www.PhoenixModularElevator.com
 info@phoenixmodularelevator.com



Drawn By:	THOUSE
Checked By:	
Date:	7/1/10
Job Number:	
Drawing Scale:	N.T.S.

SHEET NO.
SCFR-C



PLAN VIEW

P.M.E.'s typical front / rear exit, center parting elevator car.
Capacity = 2500 lbs.

Car enclosure - laminate on wood
All material for car enclosures meet the requirements of ASME A17.1
RULE 2.14.2.1

Issue Date: 7/1/10

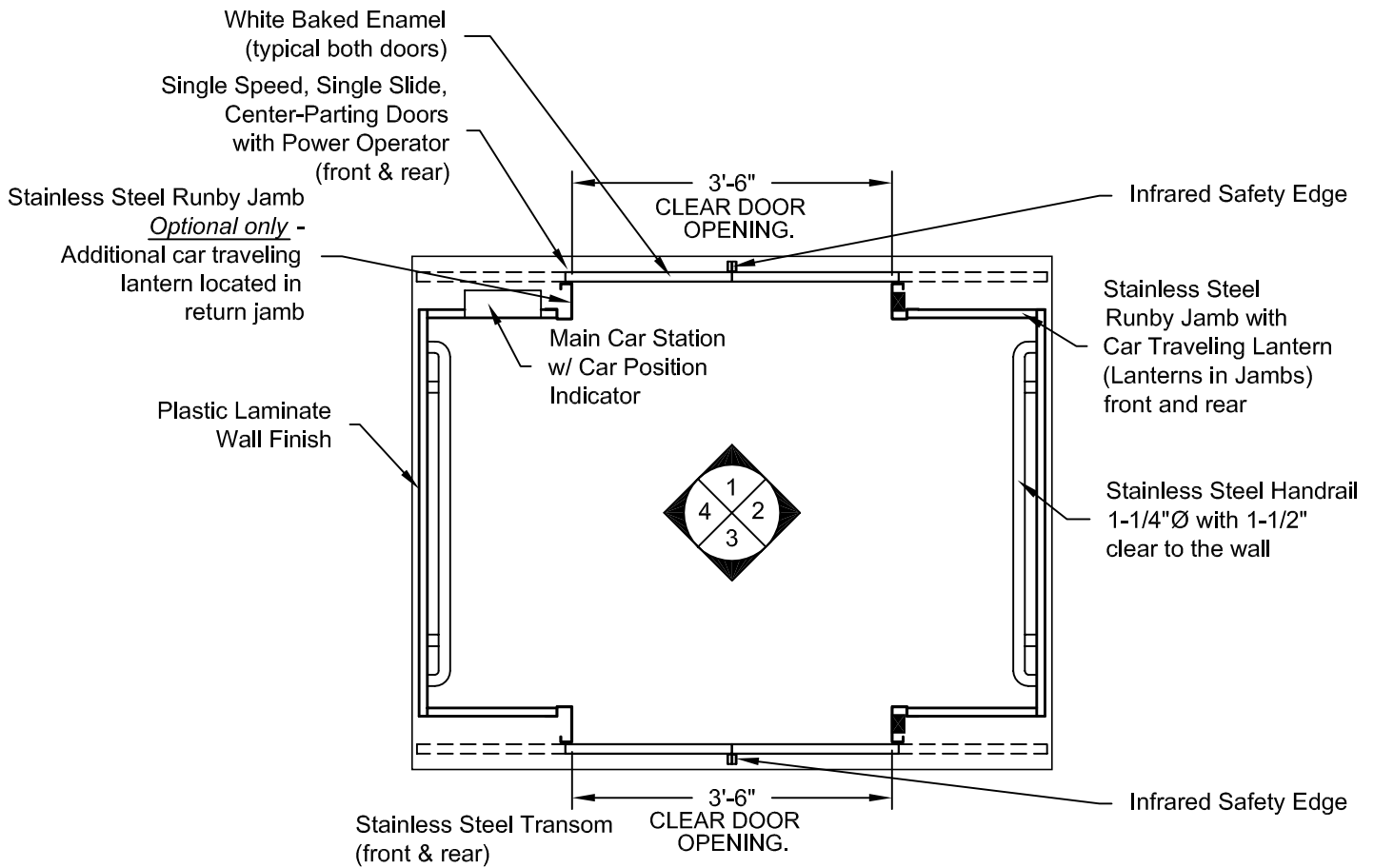


PHOENIX MODULAR ELEVATOR INC.
912 SOUTH 19TH ST. MT. VERNON, ILLINOIS 62864
PHONE: (618)-244-2314 FAX: (618)-244-1923
E-mail: info@phoenixmodularelevator.com
Web page: www.phoenixmodularelevator.com

FRONT/REAR EXIT - CENTER PARTING

SIZE A	REV	REV. DATE	FILE NO.
SCALE: N.T.S.	DATE: 2/22/05 T.H.	DWG NO. SCFR-C1	

- CAB DOOR DESIGNATIONS REFERENCED FROM INSIDE OF CAB -



PLAN VIEW
RIGHT FRONT / LEFT REAR DOOR
(MIRROR IMAGE IS AVAILABLE)

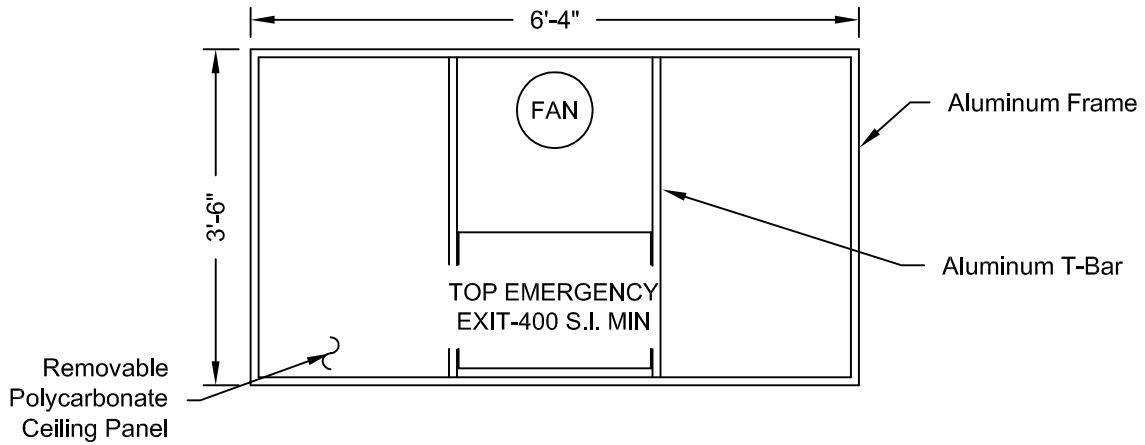
Issue Date: 7/1/10



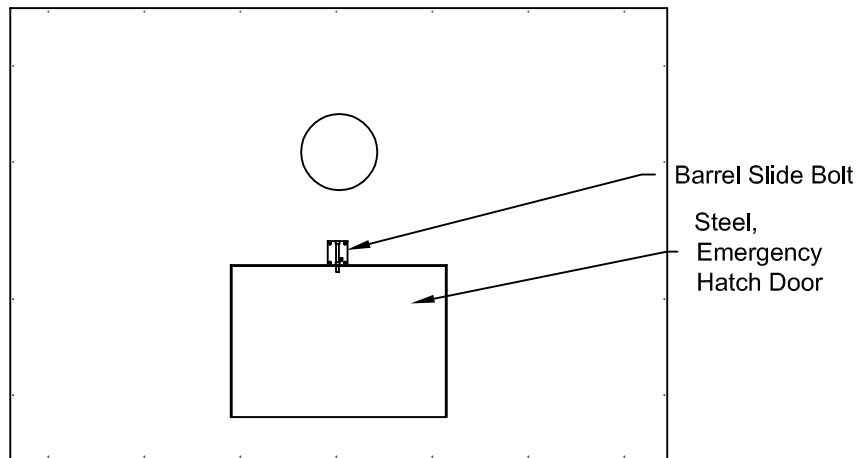
PHOENIX MODULAR ELEVATOR INC.
 912 SOUTH 19TH ST. MT. VERNON, ILLINOIS 62864
 PHONE: (618)-244-2314 FAX: (618)-244-1923
 E-mail: info@phoenixmodularelevator.com
 Web page: www.phoenixmodularelevator.com

PLAN VIEW - front/rear exit center-parting elevator car

SIZE A	REV	REV. DATE	FILE NO.
SCALE: N.T.S.	DATE: 2/23/05	T.H.	DWG NO. SCFR-C2



REFLECTIVE CEILING PLAN



ROOF PLAN VIEW
EMERGENCY EXIT DOOR

Issue Date: 7/1/10

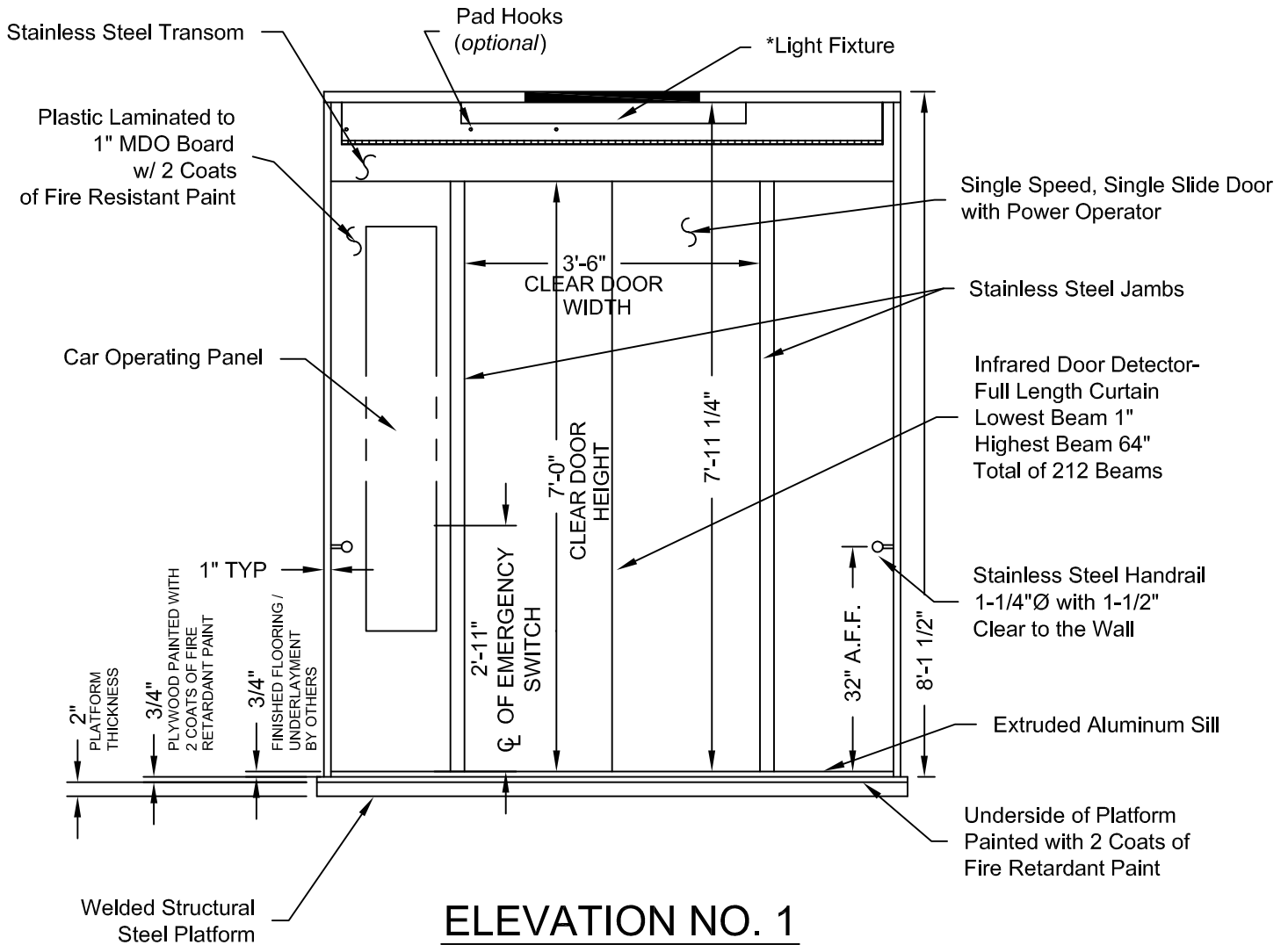


PHOENIX MODULAR ELEVATOR INC.
 912 SOUTH 19TH ST. MT. VERNON, ILLINOIS 62864
 PHONE: (618)-244-2314 FAX: (618)-244-1923
 E-mail: info@phoenixmodularelevator.com
 Web page: www.phoenixmodularelevator.com

CEILING PLAN - front/rear exit center-parting elev. car

SIZE A	REV	REV. DATE	FILE NO.
SCALE: N.T.S.	DATE: 2/23/05 T.H.	DWG NO. SCFR-C3	

* - LIGHT BULBS & COVERS SUPPLIED BY OTHERS



Issue Date: 7/1/10

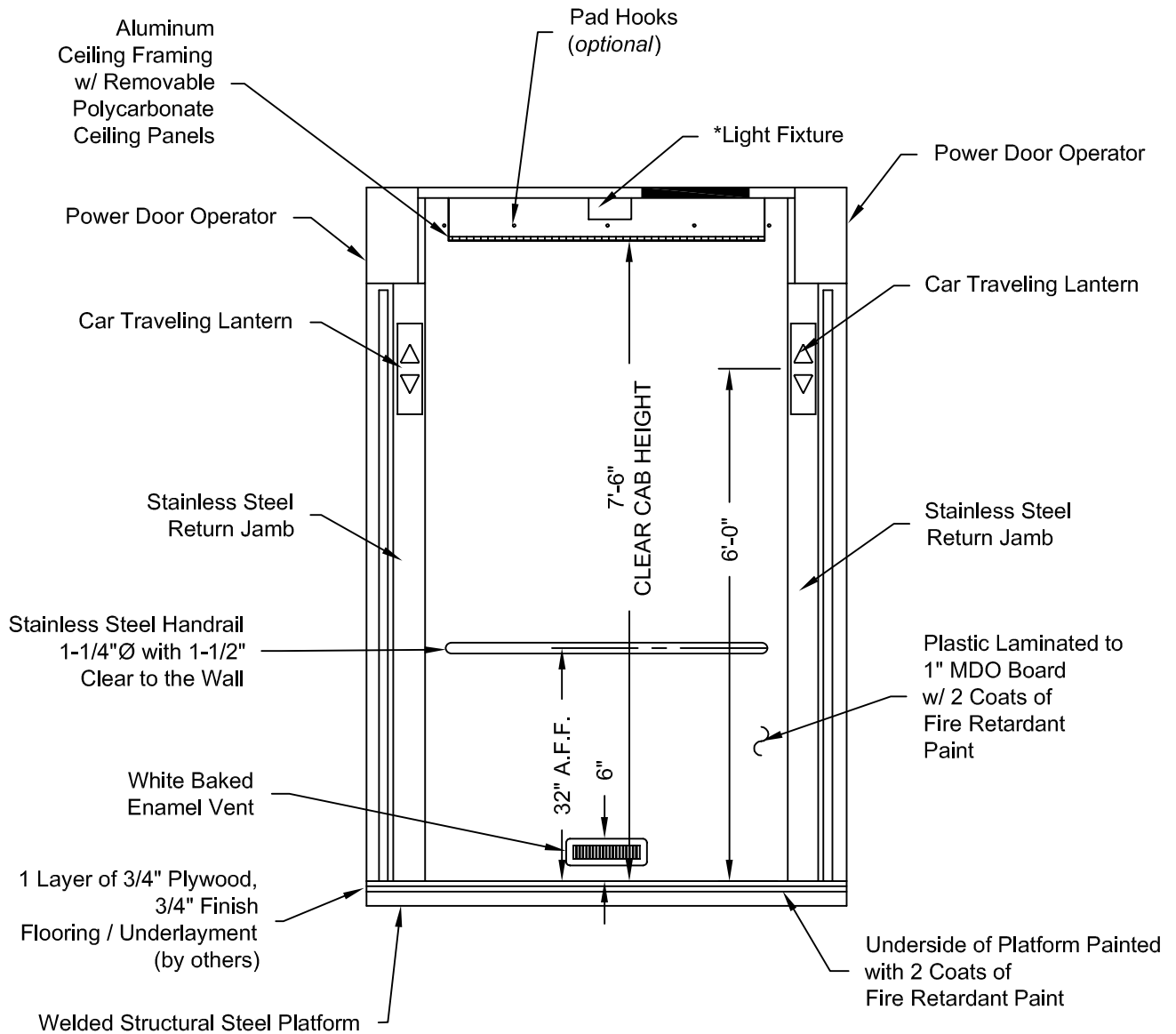


PHOENIX MODULAR ELEVATOR INC.
 912 SOUTH 19TH ST. MT. VERNON, ILLINOIS 62864
 PHONE: (618)-244-2314 FAX: (618)-244-1923
 E-mail: info@phoenixmodularelevator.com
 Web page: www.phoenixmodularelevator.com

ELEVATION NO. 1 - front/rear exit center-parting elev. car

SIZE A	REV	REV. DATE	FILE NO.
SCALE: N.T.S.	DATE: 2/23/05 T.H.	DWG NO. SCFR-C4	

* - LIGHT BULBS & COVERS SUPPLIED BY OTHERS



ELEVATION NO. 2

Issue Date: 7/1/10

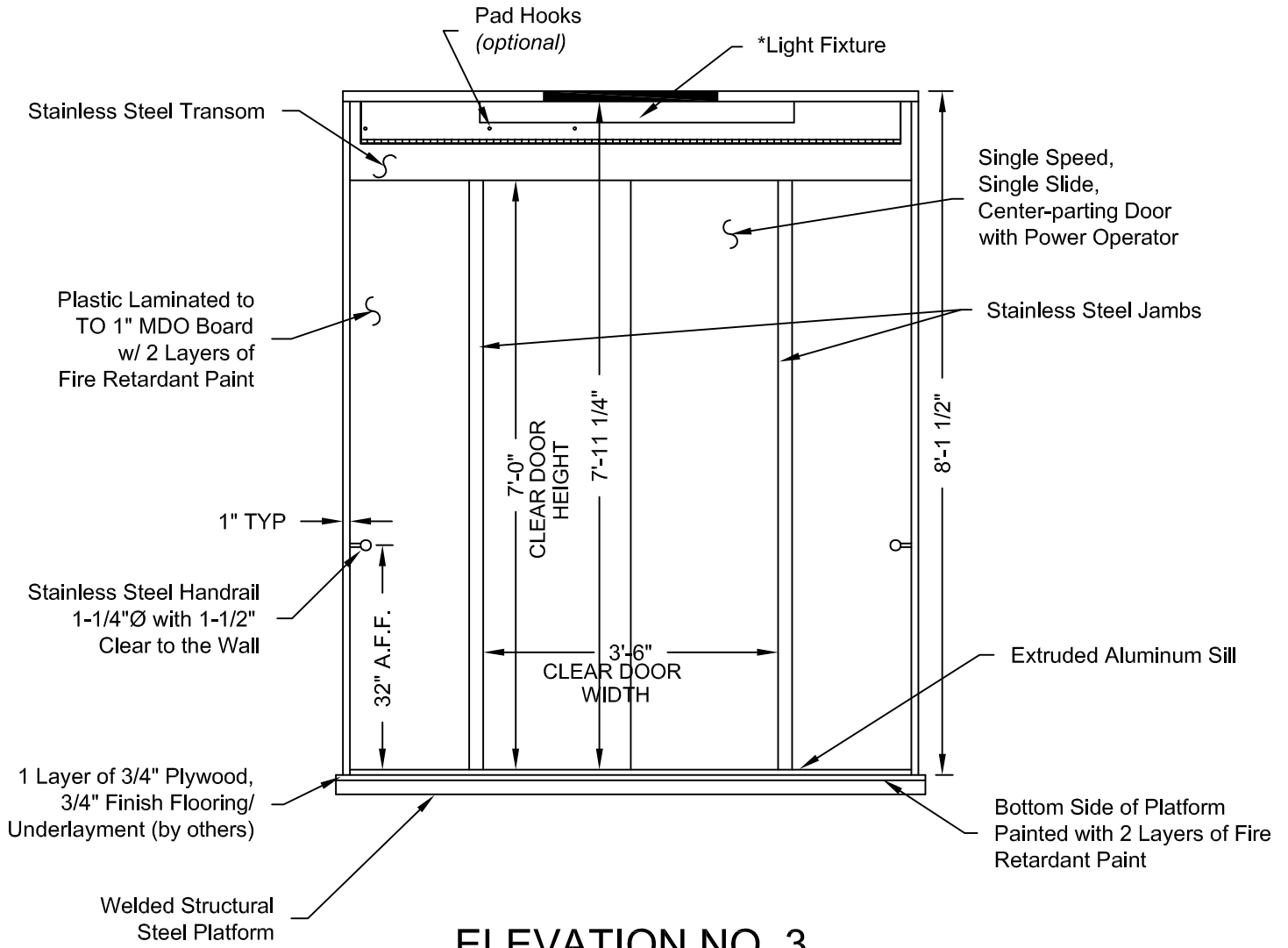


PHOENIX MODULAR ELEVATOR INC.
 912 SOUTH 19TH ST. MT. VERNON, ILLINOIS 62864
 PHONE: (618)-244-2314 FAX: (618)-244-1923
 E-mail: info@phoenixmodularelevator.com
 Web page: www.phoenixmodularelevator.com

ELEVATION NO. 2 - front/rear exit center-parting car

SIZE A	REV	REV. DATE	FILE NO.
SCALE: N.T.S.	DATE: 2/23/05	T.H.	DWG NO. SCFR-C5

* - LIGHT BULBS & COVERS SUPPLIED BY OTHERS



ELEVATION NO. 3

Issue Date: 7/1/10

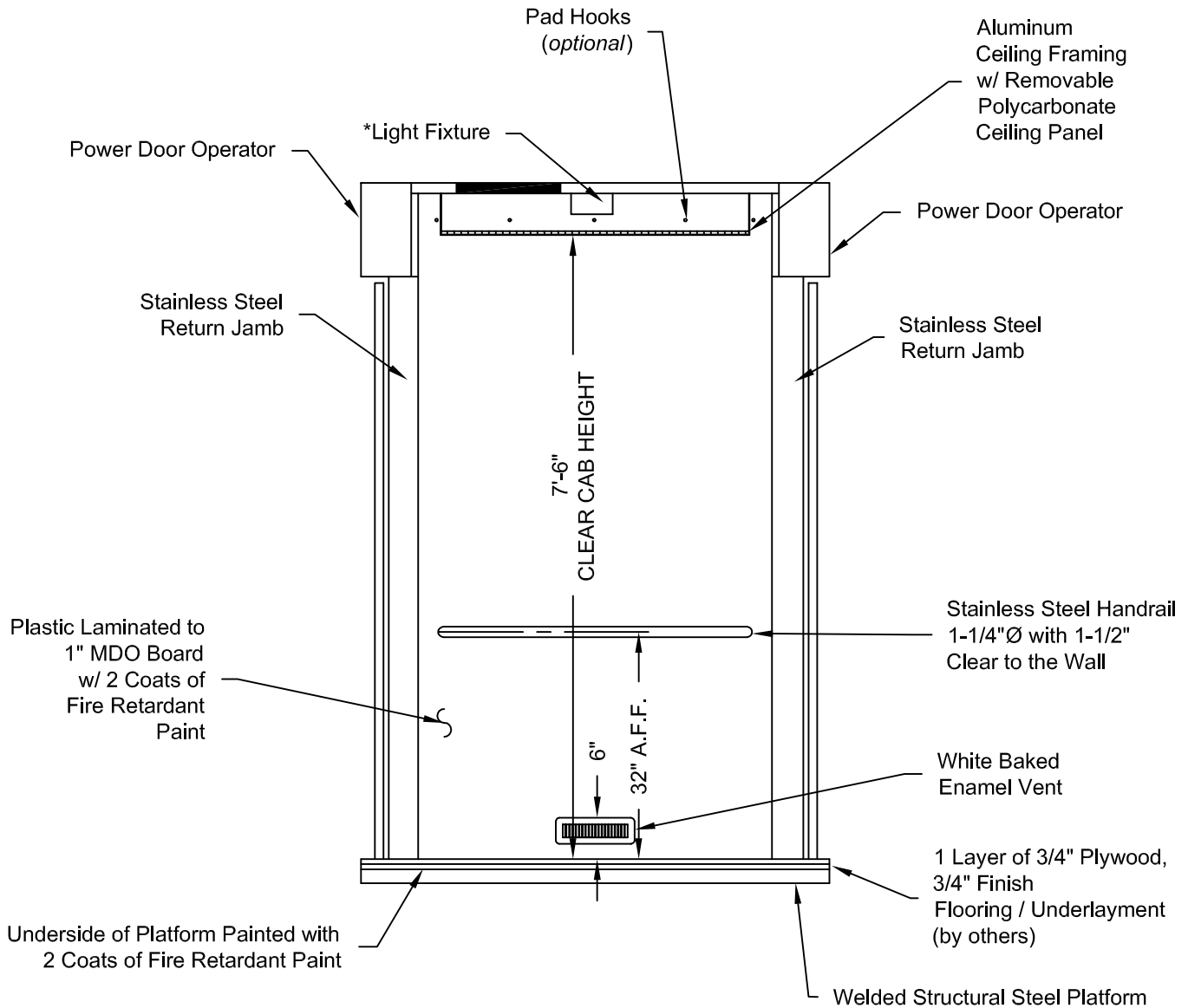


PHOENIX MODULAR ELEVATOR INC.
 912 SOUTH 19TH ST. MT. VERNON, ILLINOIS 62864
 PHONE: (618)-244-2314 FAX: (618)-244-1923
 E-mail: info@phoenixmodularelevator.com
 Web page: www.phoenixmodularelevator.com

ELEVATION NO.3 - front/rear exit center-parting car

SIZE A	REV	REV. DATE	FILE NO.
SCALE: N.T.S.	DATE: 2/23/05	T.H.	DWG NO. SCFR-C6

* - LIGHT BULBS & COVERS SUPPLIED BY OTHERS



ELEVATION NO. 4

Issue Date: 7/1/10



PHOENIX MODULAR ELEVATOR INC.
 912 SOUTH 19TH ST. MT. VERNON, ILLINOIS 62864
 PHONE: (618)-244-2314 FAX: (618)-244-1923
 E-mail: info@phoenixmodularelevator.com
 Web page: www.phoenixmodularelevator.com

ELEVATION NO. 4 - front/rear exit center-parting car

SIZE A	REV	REV. DATE	FILE NO.
SCALE: N.T.S.	DATE: 2/23/05	T.H.	DWG NO. SCFR-C7