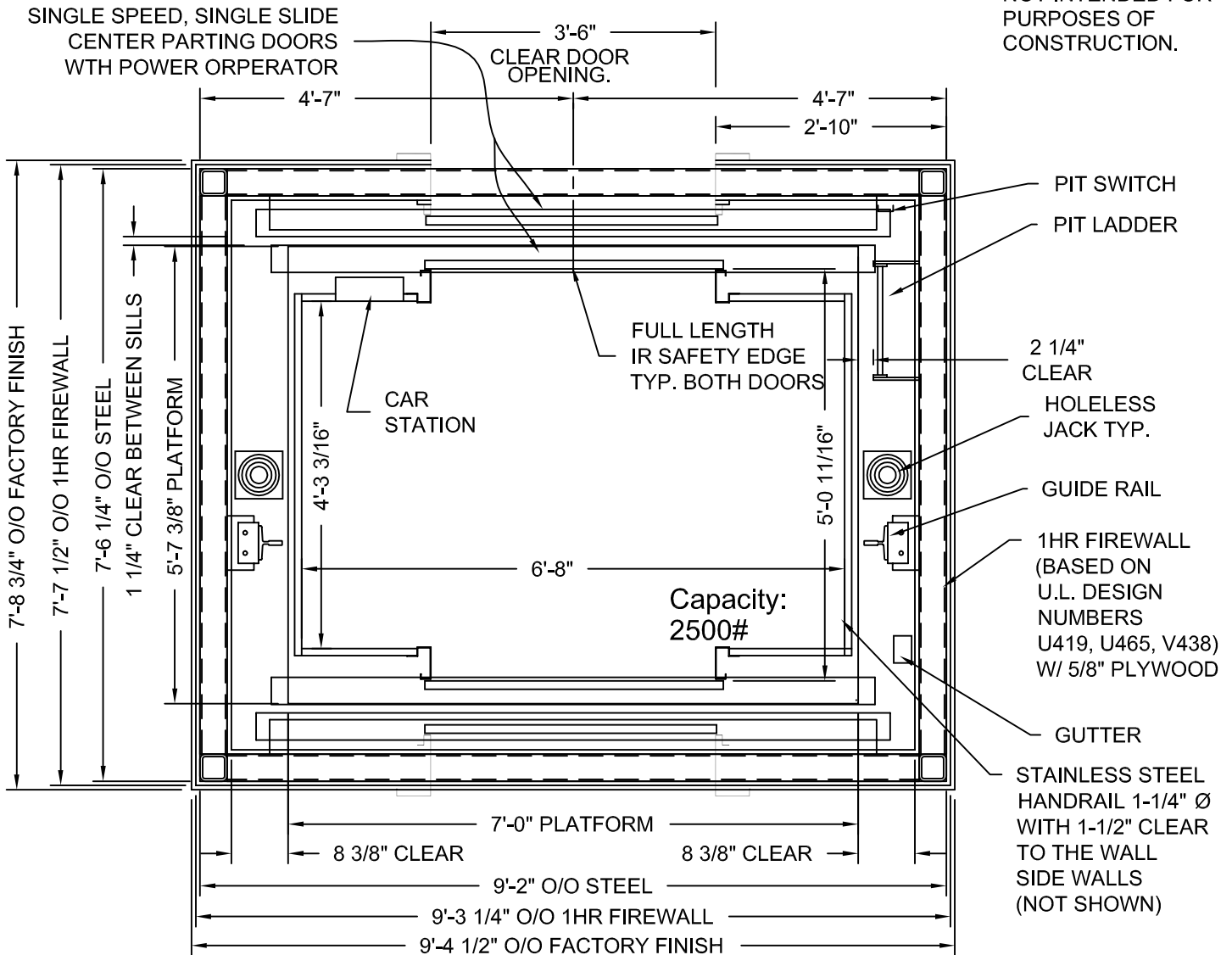


DRAWINGS ARE FOR REFERENCE USE ONLY AND ARE NOT INTENDED FOR PURPOSES OF CONSTRUCTION.



HOLELESS JACK SYSTEM SHOWN, HOLED JACK SYSTEM AVAILABLE

MODEL: AC3000/AC4000 SCFR
 CENTER PARTING - FRONT/REAR EXIT
 ONE HOUR RATED SHAFT

ADA COMPLIANT

Issue Date: 6/24/10



PHOENIX MODULAR ELEVATOR INC.
 912 SOUTH 19TH ST. MT. VERNON, ILLINOIS 62864
 PHONE: (618)-244-2314 FAX: (618)-244-1923
 E-mail: info@phoenixmodularelevator.com
 Web page: www.phoenixmodularelevator.com

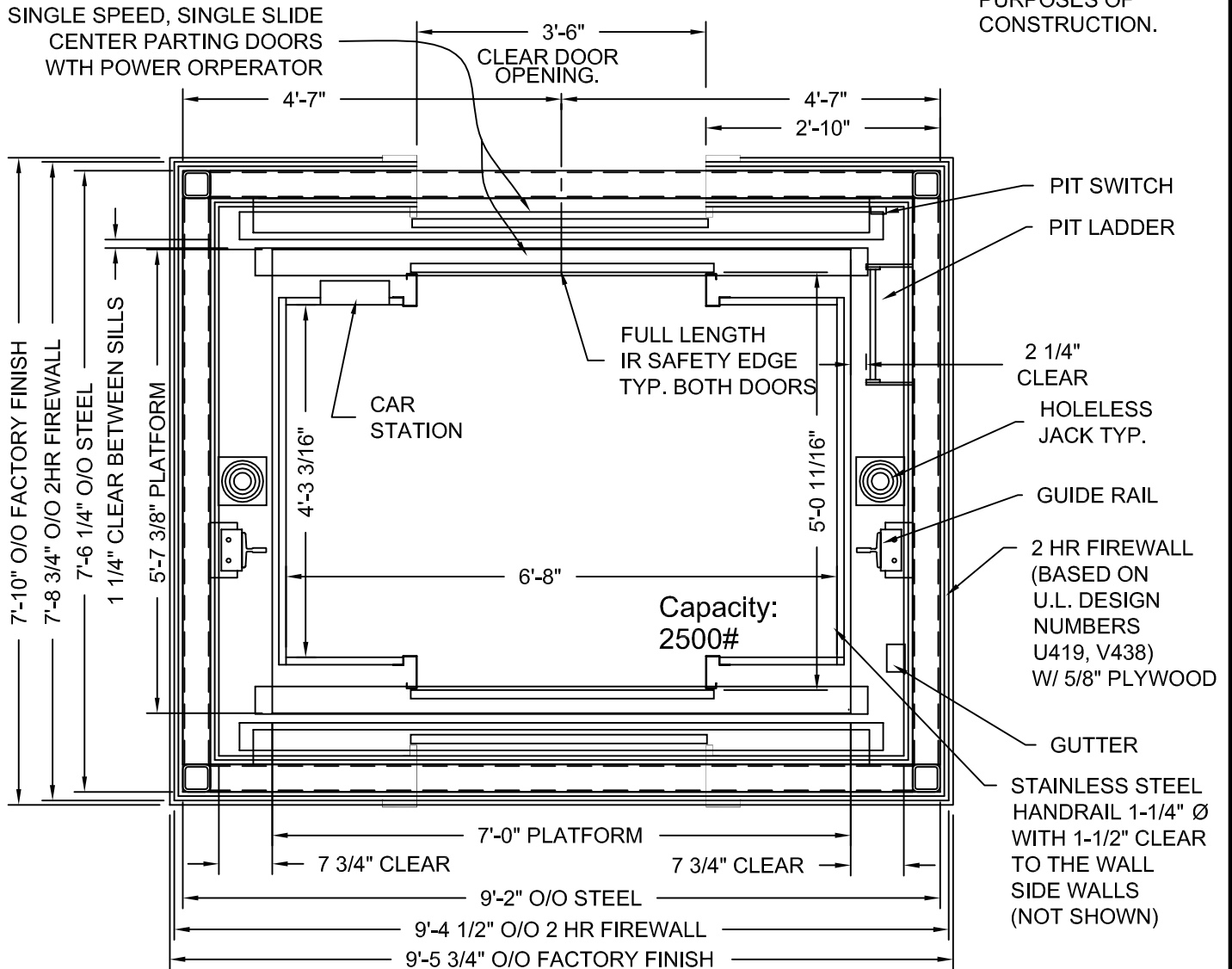
HOISTWAY & CAR PLAN - 1HR FIRE RATED HOISTWAY

SIZE A	REV	REV. DATE	FILE NO.
SCALE: 1/2"=1'-0"	DATE: 08/14/00	M.H.	DWG NO. SCFR-1HR

IS NOT GURNEY/STRETCHER COMPLIANT

NET INSIDE CAB AREA - 28.44 SQ FT

DRAWINGS ARE FOR REFERENCE USE ONLY AND ARE NOT INTENDED FOR PURPOSES OF CONSTRUCTION.



HOLELESS JACK SYSTEM SHOWN, HOLED JACK SYSTEM AVAILABLE

MODEL: AC3000/AC4000 SCFR
 CENTER PARTING - FRONT/REAR EXIT
 TWO HOUR RATED SHAFT

ADA COMPLIANT

Issue Date: 6/24/10

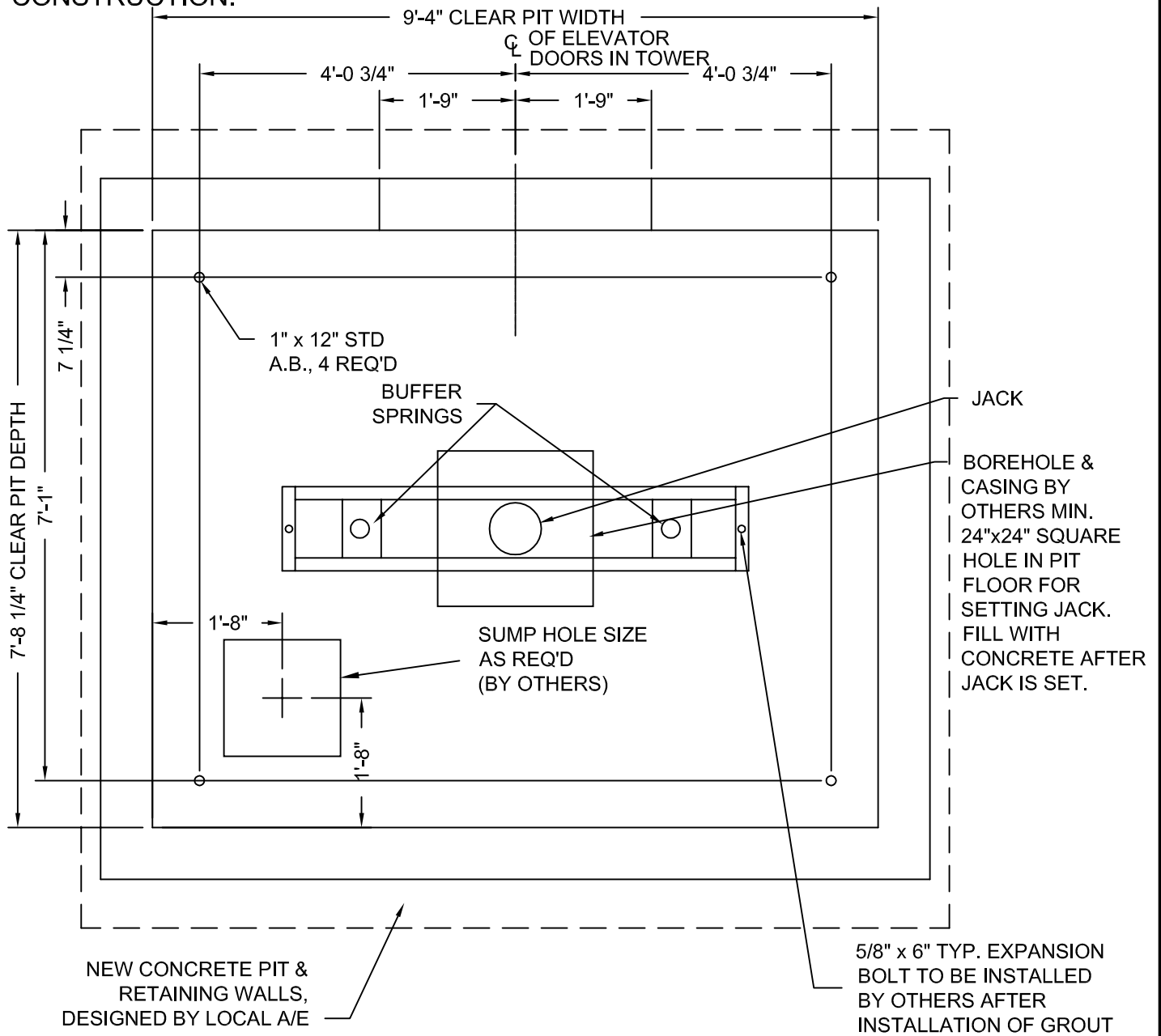


PHOENIX MODULAR ELEVATOR INC.
 912 SOUTH 19TH ST. MT. VERNON, ILLINOIS 62864
 PHONE: (618)-244-2314 FAX: (618)-244-1923
 E-mail: info@phoenixmodularelevator.com
 Web page: www.phoenixmodularelevator.com

HOISTWAY & CAR PLAN - 2HR FIRE RATED HOISTWAY

SIZE A	REV	REV. DATE	FILE NO.
SCALE: 1/2"=1'-0"	DATE: 08/14/00	M.H.	DWG NO. SCFR-2HR

DRAWINGS ARE FOR
 REFERENCE USE ONLY
 AND ARE NOT INTENDED
 FOR PURPOSES OF
 CONSTRUCTION.



MODEL: AC3000/AC4000 SCF / SCFR
 CENTER PARTING EXIT
 FOR HOLED JACK

Issue Date: 6/24/10

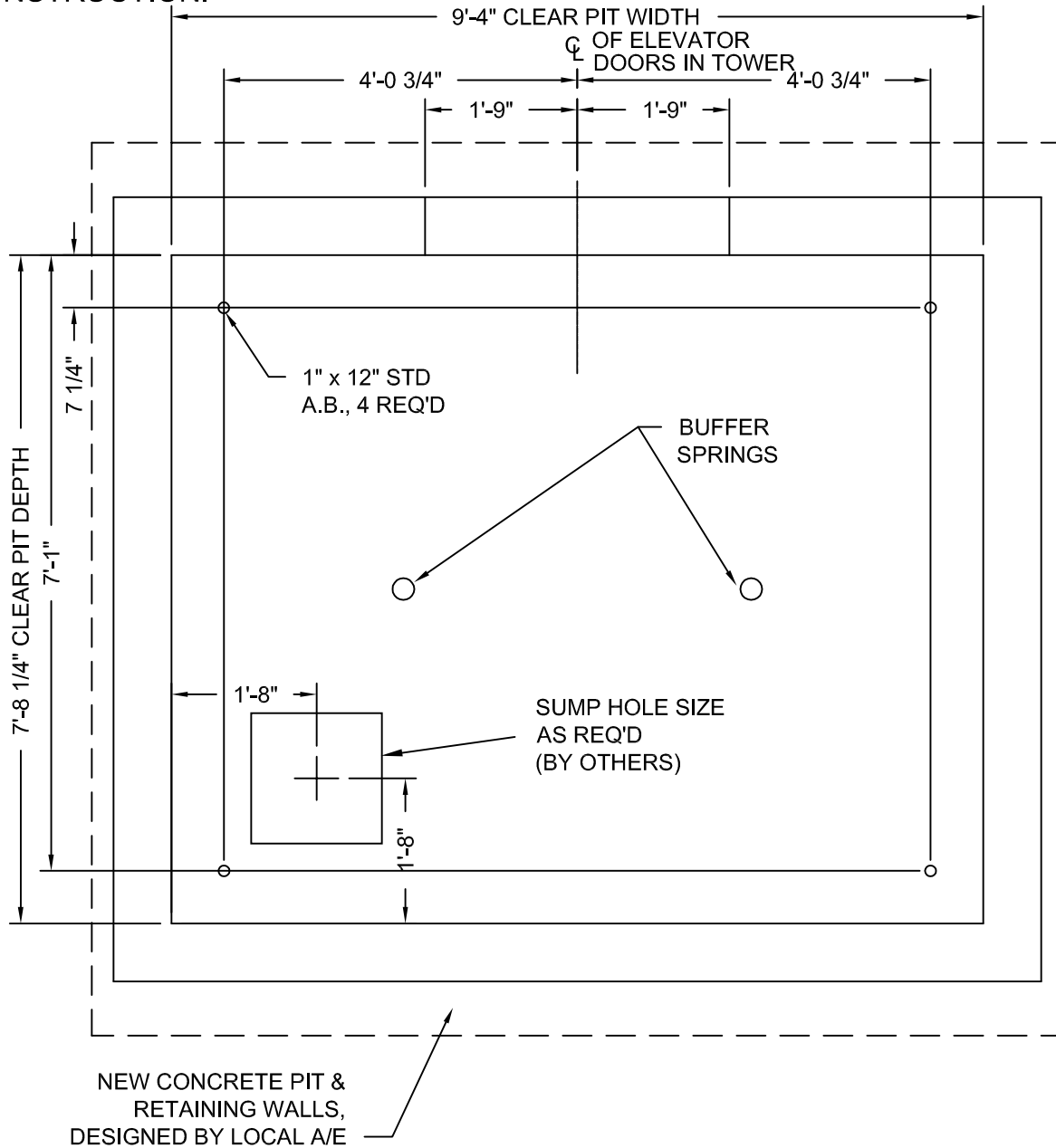


PHOENIX MODULAR ELEVATOR INC.
 912 SOUTH 19TH ST. MT. VERNON, ILLINOIS 62864
 PHONE: (618)-244-2314 FAX: (618)-244-1923
 E-mail: info@phoenixmodularelevator.com
 Web page: www.phoenixmodularelevator.com

MODEL SCF / SCFR PIT PLAN - HOLED JACK

SIZE A	REV	REV. DATE	FILE NO.
SCALE: 1/2"=1'-0"	DATE: 1/7/05 T.H.	DWG NO. SCF-P1	

DRAWINGS ARE FOR
 REFERENCE USE ONLY
 AND ARE NOT INTENDED
 FOR PURPOSES OF
 CONSTRUCTION.



MODEL: AC3000 SCF / SCFR
 CENTER PARTING EXIT
 FOR HOLELESS JACKS

Issue Date: 6/24/10



PHOENIX MODULAR ELEVATOR INC.
 912 SOUTH 19TH ST. MT. VERNON, ILLINOIS 62864
 PHONE: (618)-244-2314 FAX: (618)-244-1923
 E-mail: info@phoenixmodularelevator.com
 Web page: www.phoenixmodularelevator.com

MODEL SCF / SCFR PIT PLAN - HOLELESS JACKS

SIZE A	REV	REV. DATE	FILE NO.
SCALE: 1/2"=1'-0"	DATE: 1/7/05 T.H.	DWG NO. SCX-P2	