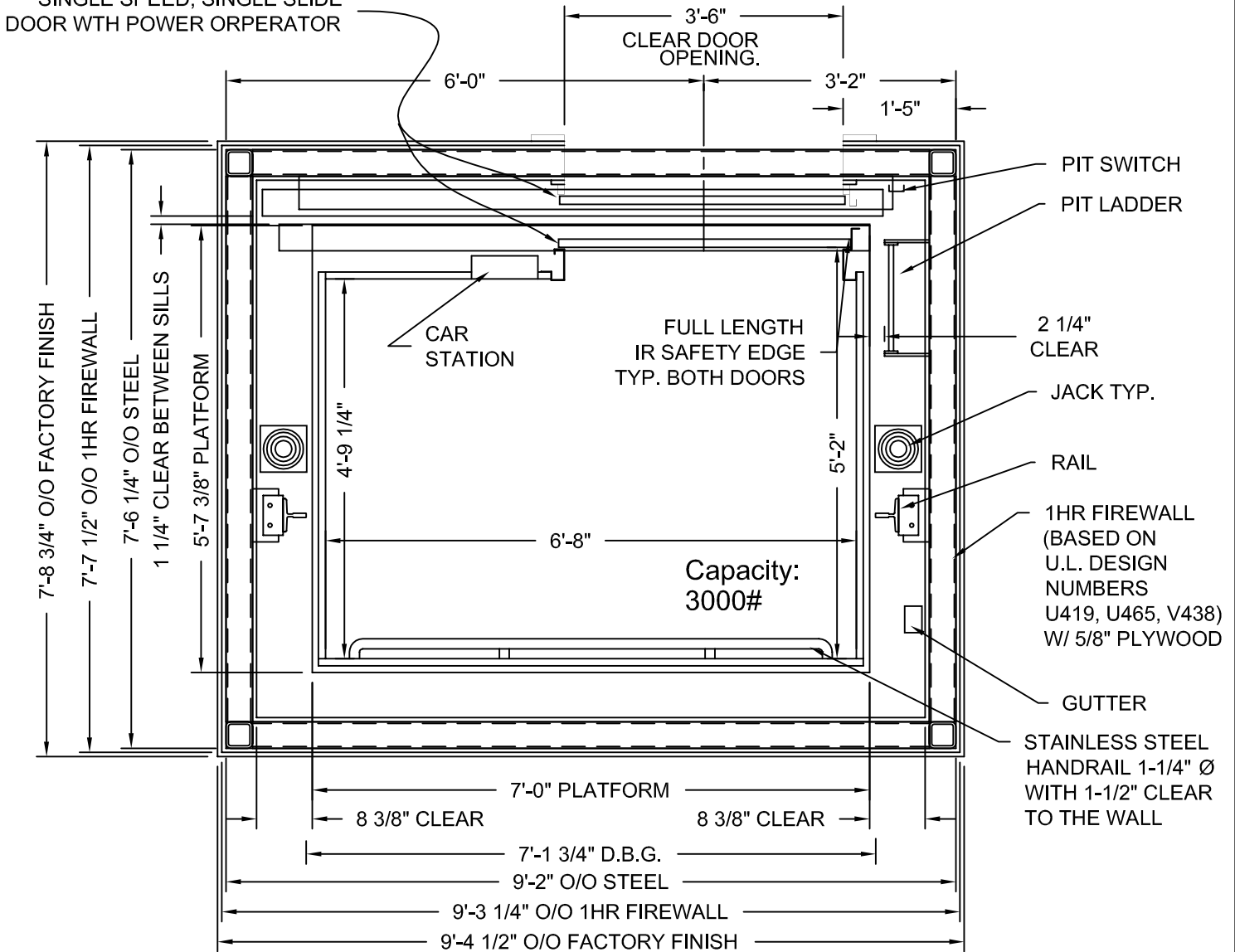


DRAWINGS ARE FOR REFERENCE USE ONLY AND ARE NOT INTENDED FOR PURPOSES OF CONSTRUCTION.

D.B.G. = Distance between guide rails.
O/O = Out to out
W/ = with

SIDE HANDRAILS (NOT SHOWN) OPTIONAL

SINGLE SPEED, SINGLE SLIDE DOOR WITH POWER OPERATOR



HOLELESS JACK SYSTEM SHOWN, HOLED JACK SYSTEM AVAILABLE

MODEL: AC3000 SF
RIGHT HAND EXIT SHOWN - LEFT HAND EXIT OPPOSITE
STRETCHER COMPLIANT

STRETCHER COMPLIANCE MEETS IBC 2003, SECTION 3002.4

ADA COMPLIANT

Issue Date: 6/24/10

PHOENIX MODULAR ELEVATOR INC.
912 SOUTH 19TH ST. MT. VERNON, ILLINOIS 62864
PHONE: (618)-244-2314 FAX: (618)-244-1923
E-mail: info@phoenixmodularelevator.com
Web page: www.phoenixmodularelevator.com

HOISTWAY & CAR PLAN - 1HR FIRE RATED HOISTWAY

SIZE A	REV	REV. DATE	FILE NO.
SCALE: 1/2"=1'-0"	DATE: 12/10/04 T.H.	DWG NO. SF-1HR	

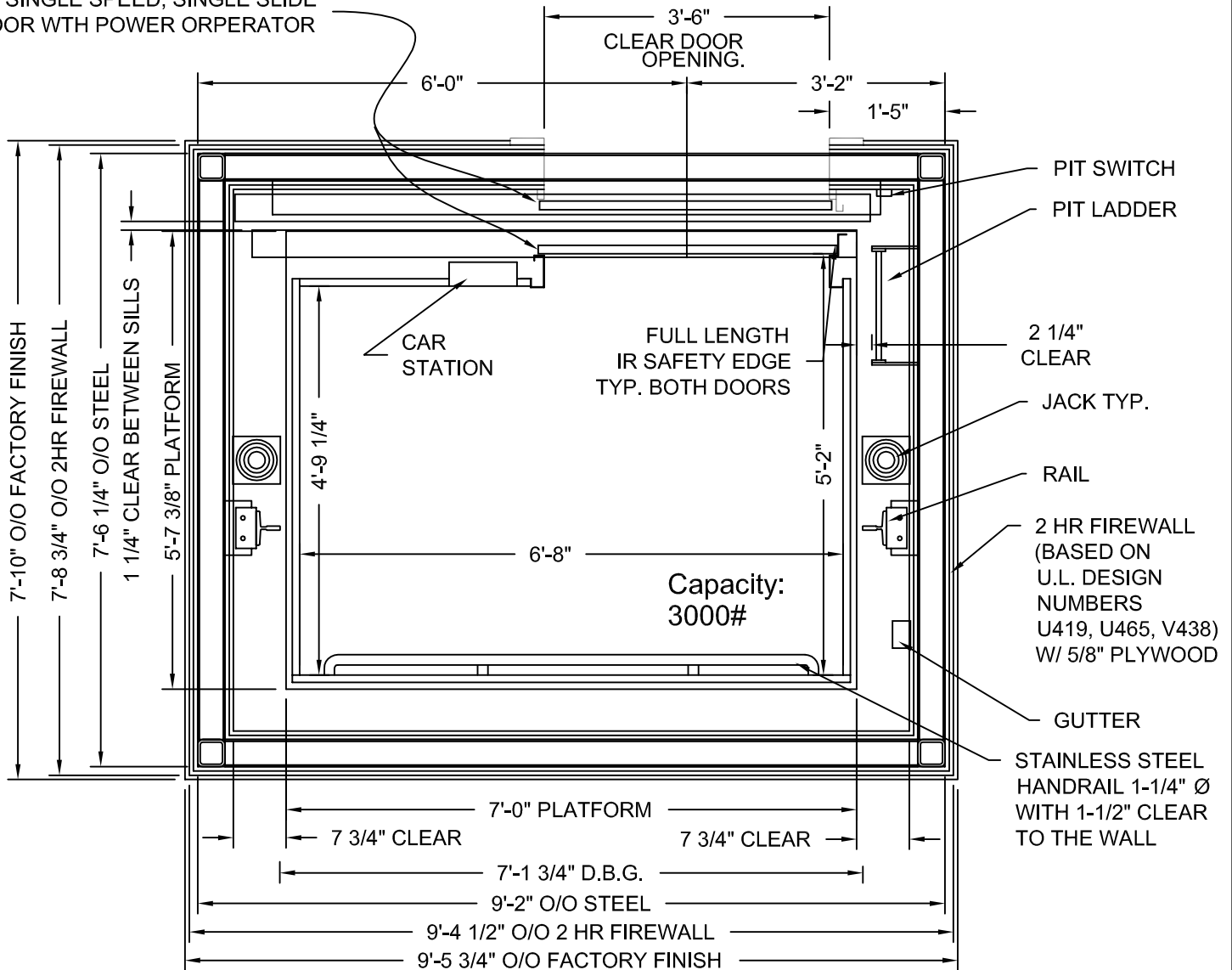
DRAWINGS ARE FOR REFERENCE USE ONLY AND ARE NOT INTENDED FOR PURPOSES OF CONSTRUCTION.

NET INSIDE CAB AREA - 27.03 SQ FT

D.B.G. = Distance between guide rails.
 O/O = Out to out
 W/ = with

SIDE HANDRAILS (NOT SHOWN) OPTIONAL

SINGLE SPEED, SINGLE SLIDE DOOR WTH POWER OPERATOR



HOLELESS JACK SYSTEM SHOWN, HOLED JACK SYSTEM AVAILABLE

STRETCHER COMPLIANCE MEETS IBC 2003, SECTION 3002.4

MODEL: AC3000-FW

RIGHT HAND EXIT SHOWN - LEFT HAND EXIT OPPOSITE

ADA COMPLIANT

STRETCHER COMPLIANT

Issue Date: 6/24/10

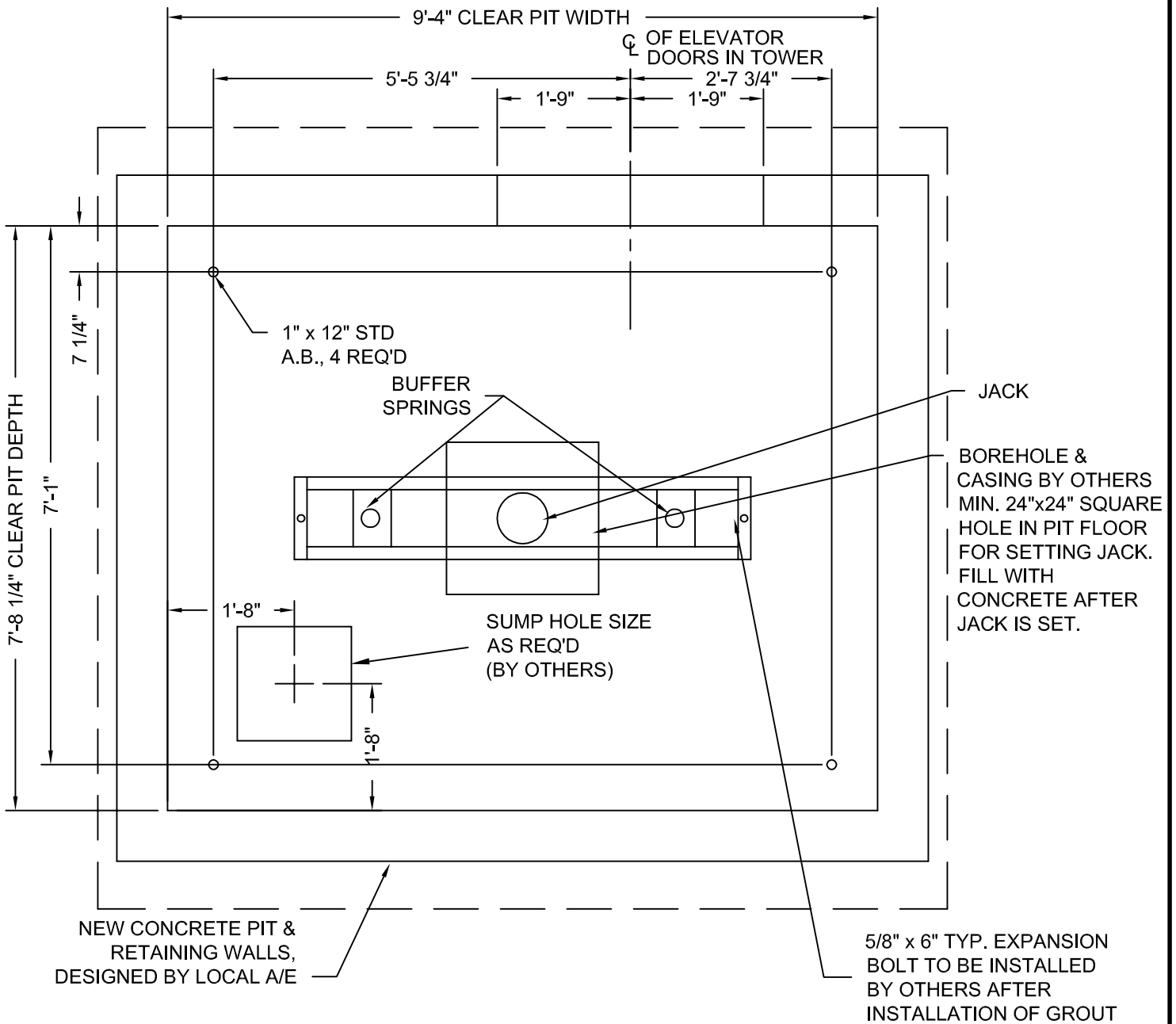
PHOENIX MODULAR ELEVATOR INC.
 912 SOUTH 19TH ST. MT. VERNON, ILLINOIS 62864
 PHONE: (618)-244-2314 FAX: (618)-244-1923
 E-mail: info@phoenixmodularelevator.com
 Web page: www.phoenixmodularelevator.com

HOISTWAY & CAR PLAN = 1HR FIRE RATED HOISTWAY

SIZE A	REV	REV. DATE	FILE NO.
SCALE: 1/2"=1'-0"	DATE: 12/10/04 T.H.	DWG NO.	SF-2HR



DRAWINGS ARE FOR
 REFERENCE USE ONLY
 AND ARE NOT INTENDED
 FOR PURPOSES OF
 CONSTRUCTION.



MODEL: AC3000/AC4000 SF / SFR
 RIGHT HAND EXIT SHOWN - LEFT HAND EXIT OPPOSITE

Issue Date: 6/24/10

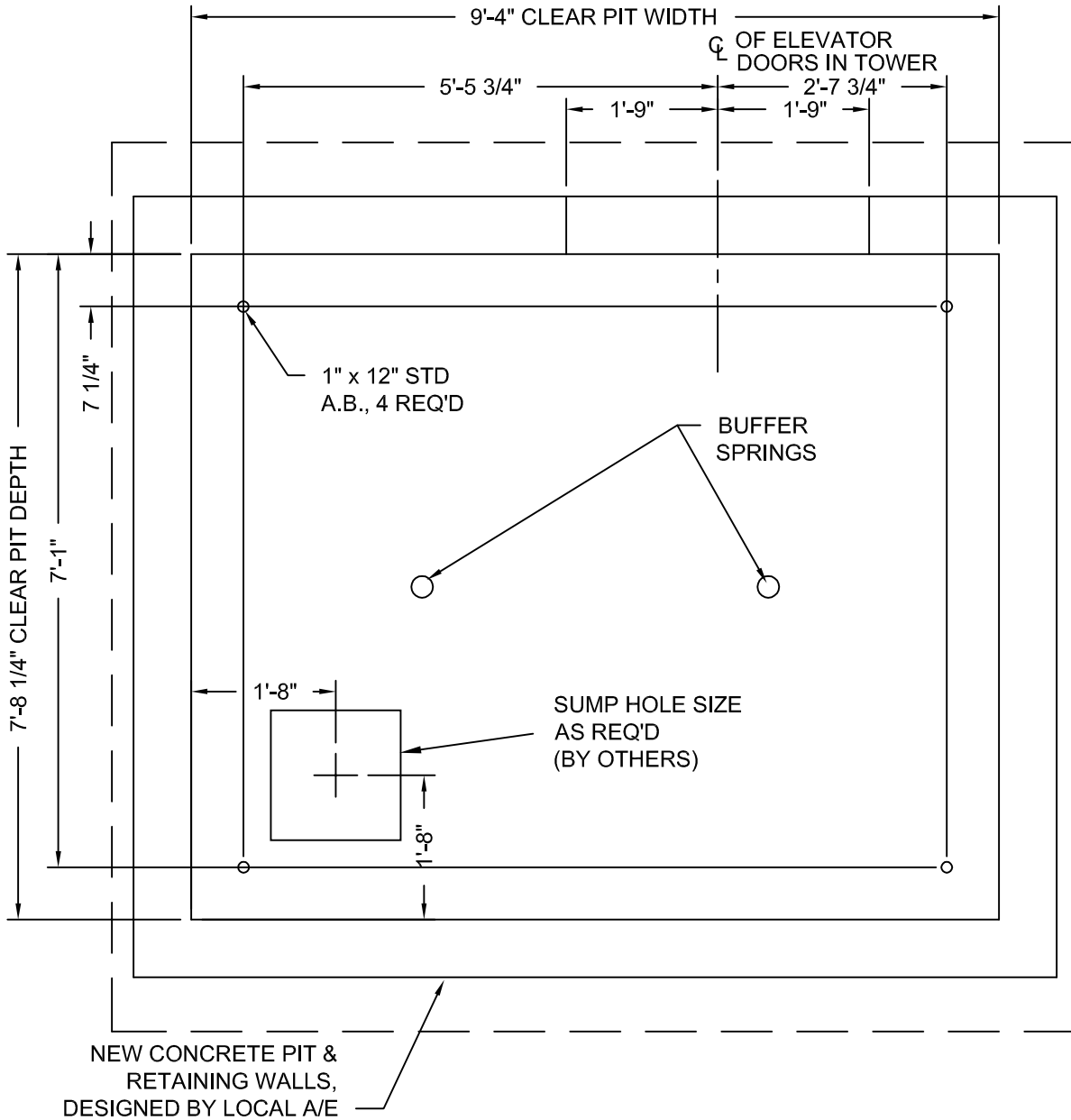
PHOENIX MODULAR ELEVATOR INC.
 912 SOUTH 19TH ST. MT. VERNON, ILLINOIS 62864
 PHONE: (618)-244-2314 FAX: (618)-244-1923
 E-mail: info@phoenixmodularelevator.com
 Web page: www.phoenixmodularelevator.com

MODEL SF / SFR PIT PLAN - HOLED JACK

SIZE A	REV	REV. DATE	FILE NO.
SCALE: 1/2"=1'-0"	DATE: 1/4/05 T.H.	DWG NO.	SFX-P1



DRAWINGS ARE FOR
 REFERENCE USE ONLY
 AND ARE NOT INTENDED
 FOR PURPOSES OF
 CONSTRUCTION.



MODEL: AC3000 SF / SFR
 RIGHT HAND EXIT SHOWN - LEFT HAND EXIT OPPOSITE

AC4000 TYPICALLY USES HOLED JACK. ONLY UNDER CERTAIN CIRCUMSTANCES CAN HOLELESS JACKS BE USED.

Issue Date: 6/24/10

PHOENIX MODULAR ELEVATOR INC.
 912 SOUTH 19TH ST. MT. VERNON, ILLINOIS 62864
 PHONE: (618)-244-2314 FAX: (618)-244-1923
 E-mail: info@phoenixmodularelevator.com
 Web page: www.phoenixmodularelevator.com

MODEL SF / SFR PIT PLAN - HOLELESS JACKS

SIZE A	REV	REV. DATE	FILE NO.
SCALE: 1/2"=1'-0"	DATE: 1/4/05 T.H.	DWG NO.	SFX-P2

