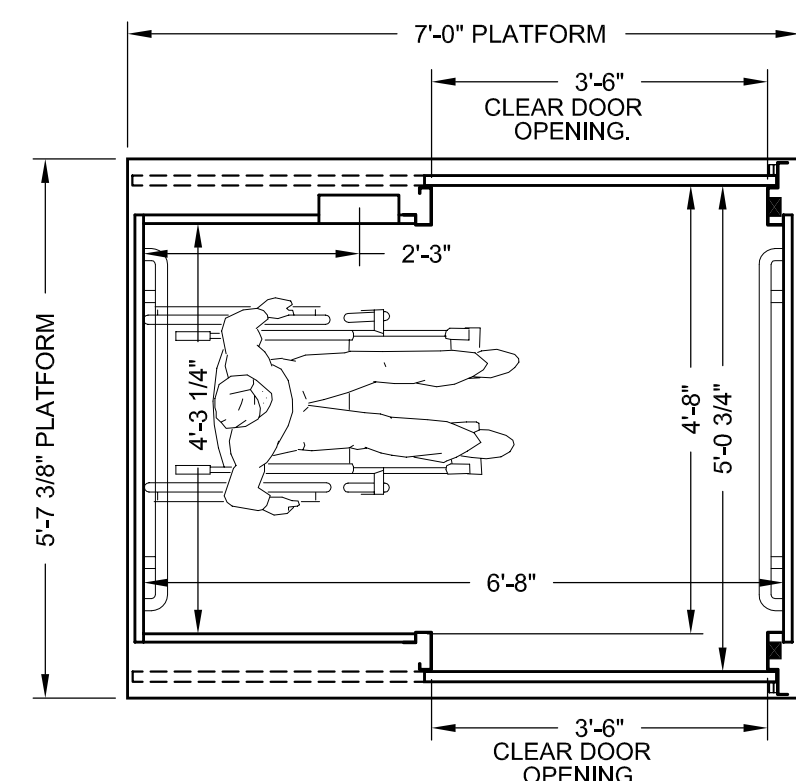
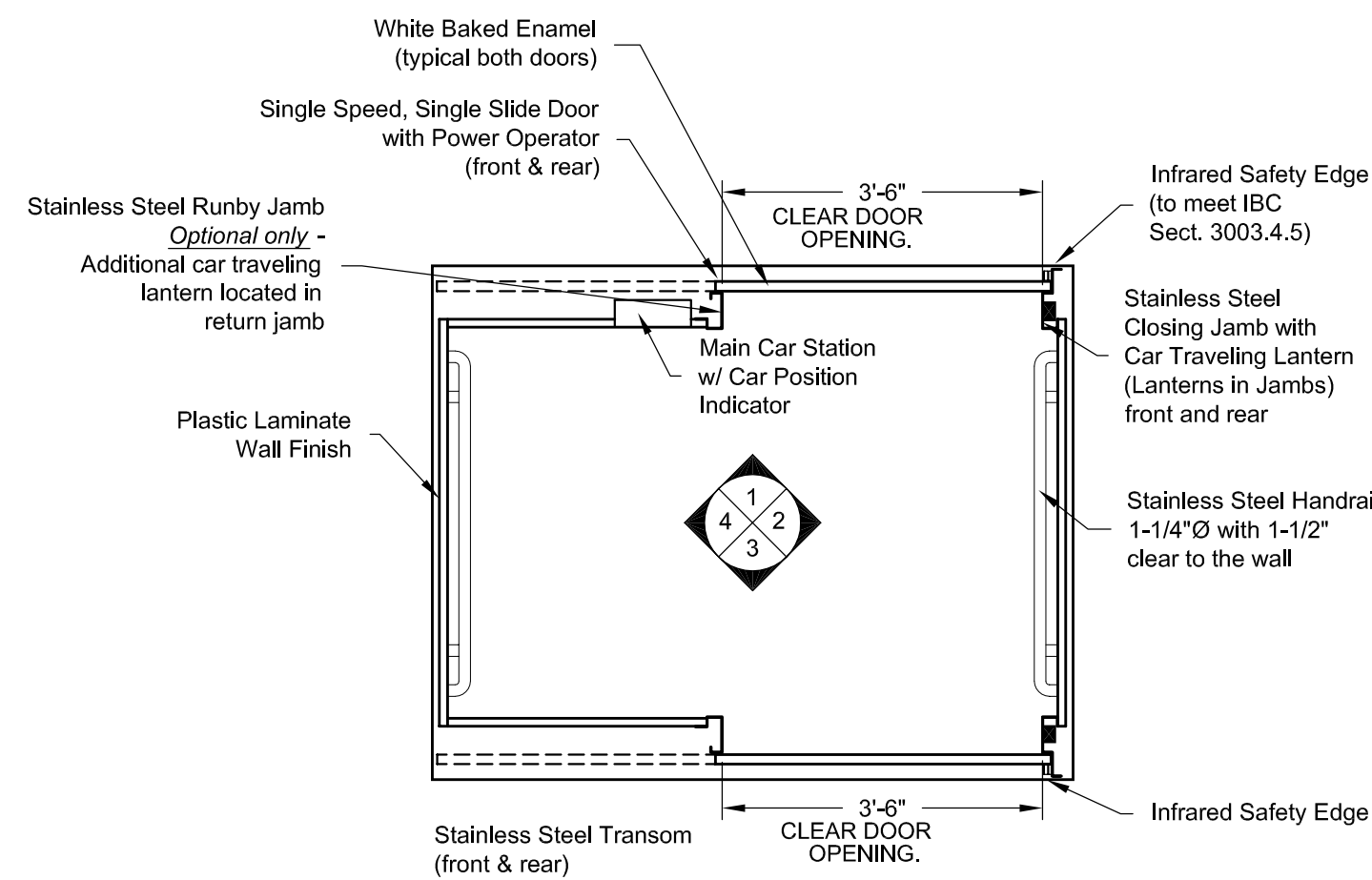


- CAB DOOR DESIGNATIONS REFERENCED FROM INSIDE OF CAB -

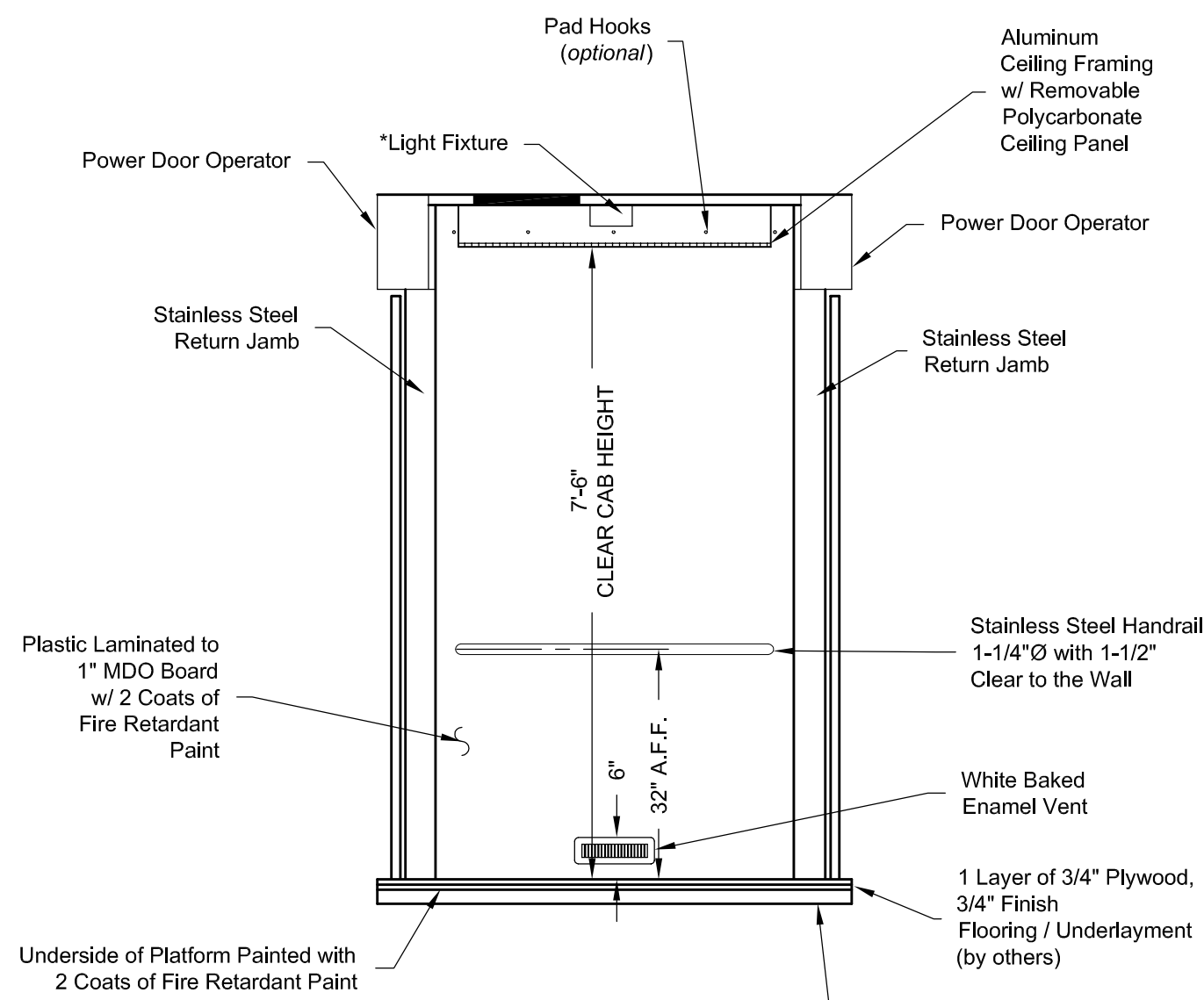
\* - LIGHT BULBS & COVERS SUPPLIED BY OTHERS



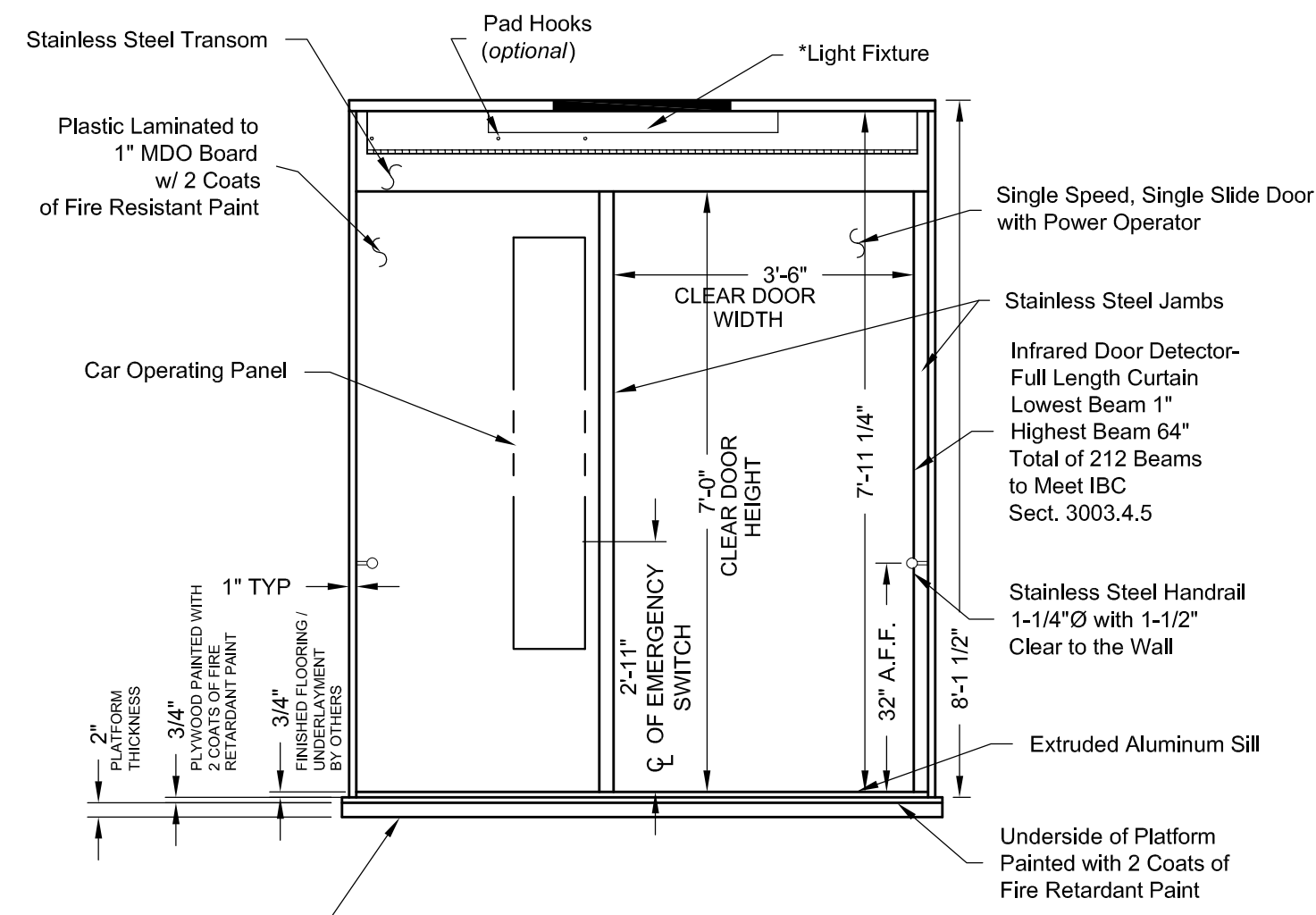
PLAN VIEW



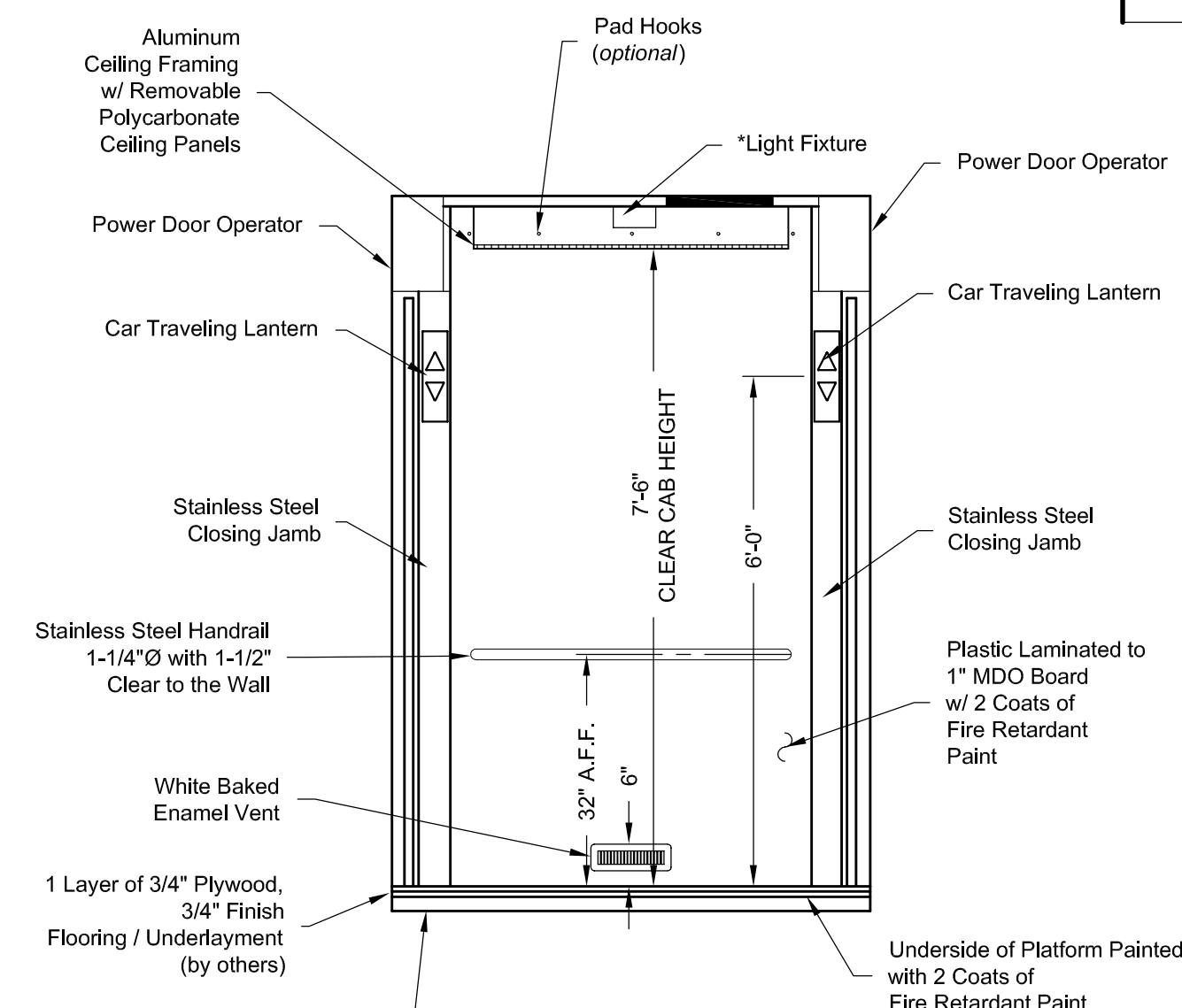
PLAN VIEW  
RIGHT FRONT / LEFT REAR DOOR  
(MIRROR IMAGE IS AVAILABLE)



ELEVATION NO. 4

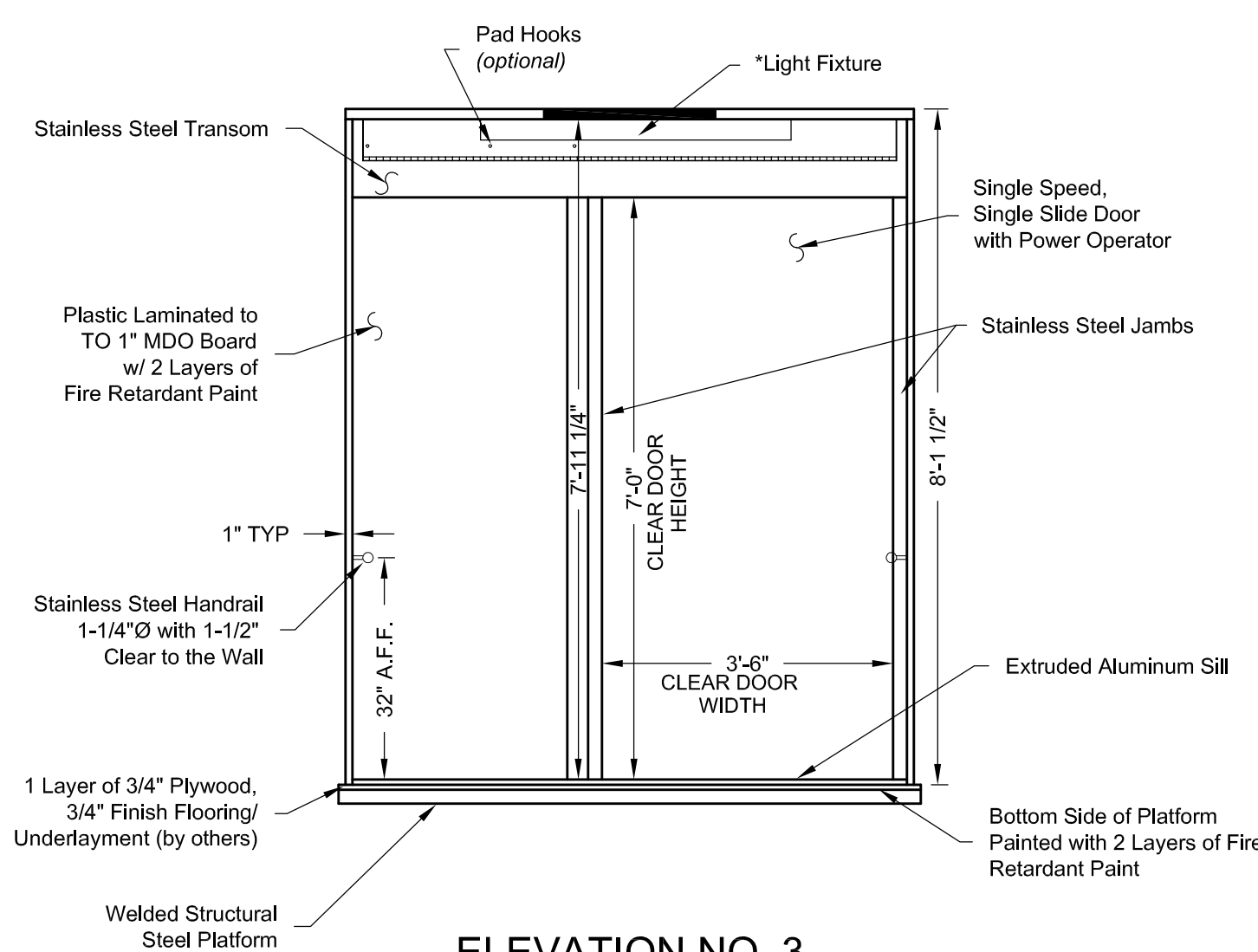


ELEVATION NO. 1

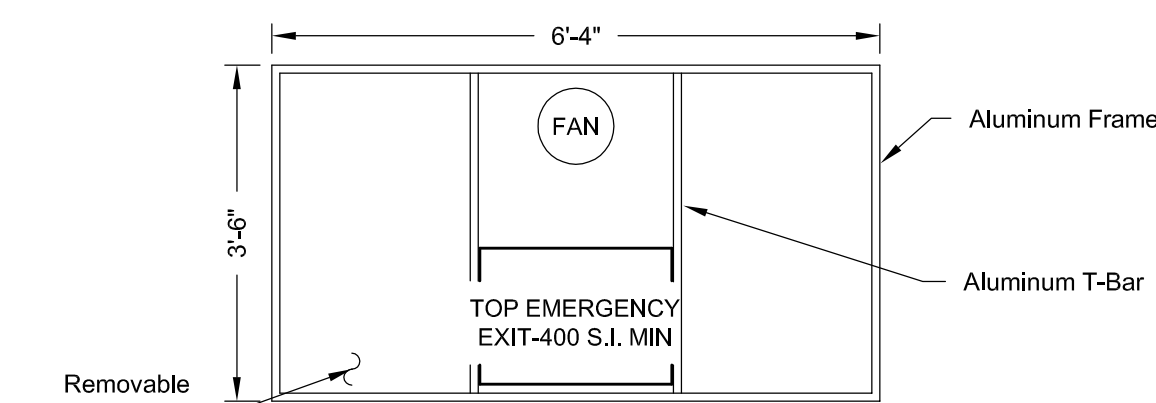


ELEVATION NO. 2

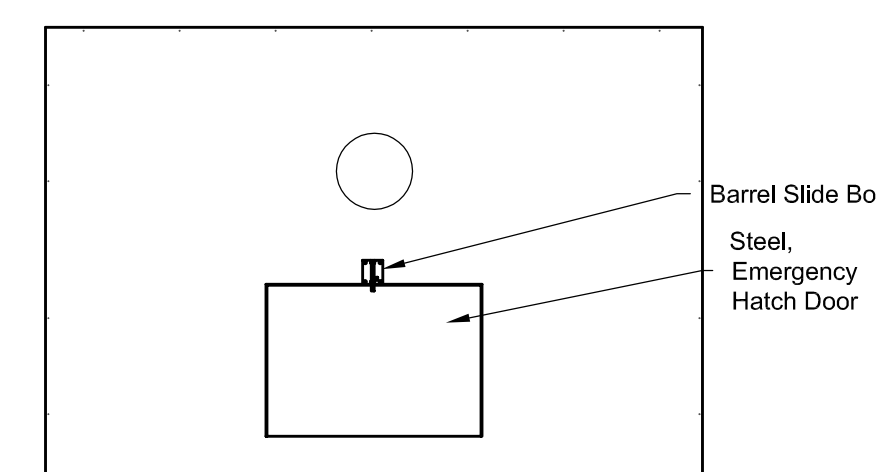
THE ELEVATOR SHOWN IS STRETCHER COMPLIANT TO MEET UBC SECTION 3003.5.



ELEVATION NO. 3



REFLECTIVE CEILING PLAN



ROOF PLAN VIEW  
EMERGENCY EXIT DOOR

PASSENGER ELEVATOR CAR

CAB CANOPY: (2) LAYERS OF 3/4" PLYWOOD WITH EXTERIOR SURFACES PAINTED WITH FIRE RETARDANT PAINT
DOOR PANEL(S): 16 GAUGE REINFORCED HOLLOW METAL. CAR SIDE FINISH (SEE BELOW)
FRONT RETURN WALL: 1" PREMIUM PARTICLE BOARD CLAD WITH PLASTIC LAMINATE (FINISH AS SELECTED BELOW) CONTAINING CAR OPERATING STATION
CAR WALLS: 1" PREMIUM PARTICLE BOARD CLAD WITH PLASTIC LAMINATE (FINISH AS SELECTED BELOW) WITH REMAINING SURFACE PAINTED WITH TWO COATS OF FIRE RETARDANT PAINT.
SUSPENDED ISLAND CEILING: CEILING TILES - REMOVABLE TWIN WALL POLYCARBONATE CEILING FRAME - ALUMINUM TEE
LIGHTING: FLUORESCENT TUBES ABOVE CEILING TILES TWO FIXTURES (BULBS AND COVERS BY OTHERS) NOTE: EMERGENCY CAR LIGHTING IS PROVIDED (BUILT INTO CAR STATION)
CAR CONSTRUCTION AND MATERIALS USED MEET ALL APPLICABLE CODES.
TRANSOM AND JAMB FINISH: #4 SATIN - STAINLESS STEEL
CAR DOOR FINISH: WHITE ENAMEL
WALL FINISH: WILSONART BRAND PROJECT-SPECIFIC
HANDRAIL @ SIDE WALLS 1-1/4"Ø - #4SS
1 - SPEED EXHAUST FAN

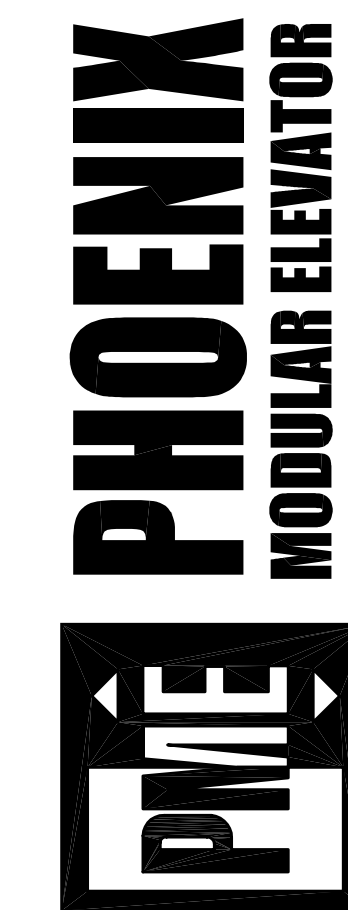
CAPACITY RATING - 2500#

All material for car enclosures shall meet the requirements of ASME A17.1, Sect. 2.14.2

NO.	DATE	BY
REVISIONS		

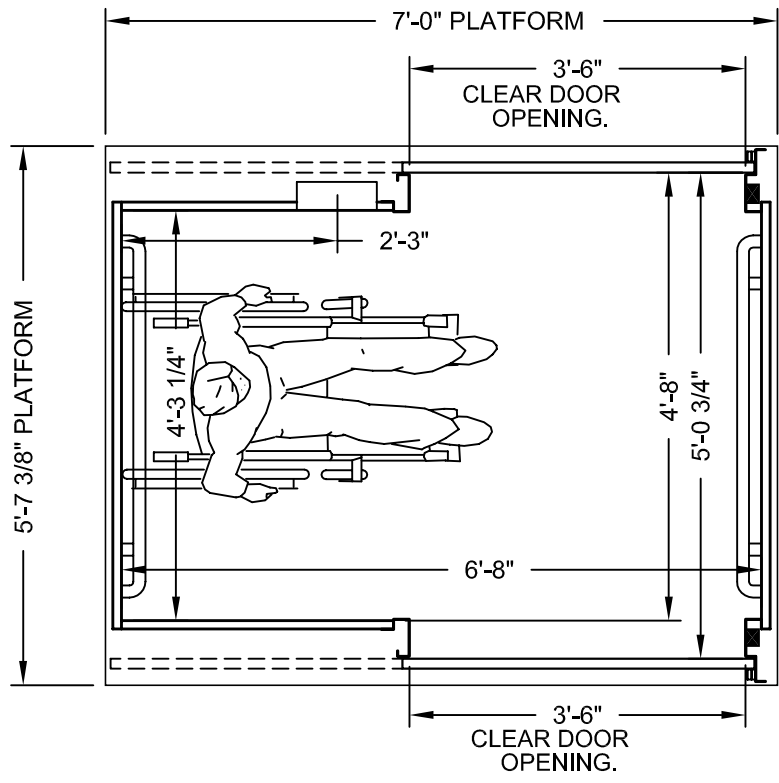
**FRONT / REAR EXIT  
ADA COMPLIANT  
2003 IBC STRETCHER COMPLIANT**

912 SOUTH 19TH ST.  
 MT. VERNON, ILLINOIS 62864  
 PHONE: (618) 244-2314  
 FAX: (618) 244-1923  
 www.PhoenixModularElevator.com  
 info@phoenixmodularelevator.com



Drawn By:	THOUSE
Checked By:	
Date:	6/25/10
Job Number:	
Drawing Scale:	N.T.S.

SHEET NO.  
**SFR-C**



**PLAN VIEW**

P.M.E.'s typical front / rear exit, stretcher compliant size elevator car.  
Capacity = 2500 lbs.

Car enclosure - laminate on wood  
All material for car enclosures meet the requirements of ASME A17.1  
RULE 2.14.2.1

THE ELEVATOR SHOWN IS STRETCHER COMPLIANT TO MEET 2003 IBC SECTION 3003.5.

Issue Date: 6/30/10

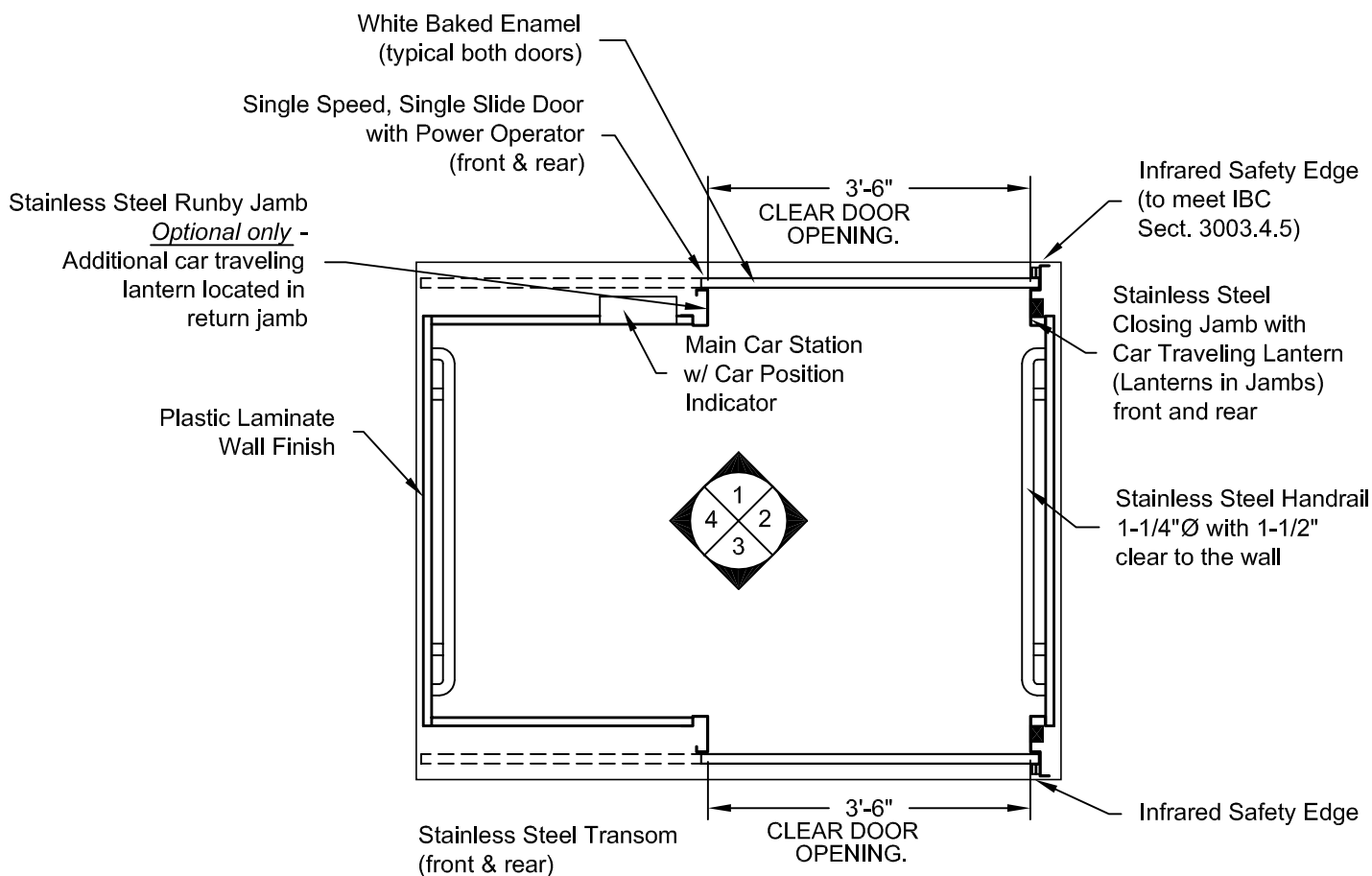


**PHOENIX MODULAR ELEVATOR INC.**  
912 SOUTH 19TH ST. MT. VERNON, ILLINOIS 62864  
PHONE: (618)-244-2314 FAX: (618)-244-1923  
E-mail: info@phoenixmodularelevator.com  
Web page: www.phoenixmodularelevator.com

**FRONT/REAR EXIT - stretcher compliant elevator car**

SIZE A	REV	REV. DATE	FILE NO.
SCALE: N.T.S.	DATE: 2/22/05	T.H.	DWG NO. SFR-C1

- CAB DOOR DESIGNATIONS REFERENCED FROM INSIDE OF CAB -



**PLAN VIEW**  
**RIGHT FRONT / LEFT REAR DOOR**  
**(MIRROR IMAGE IS AVAILABLE)**

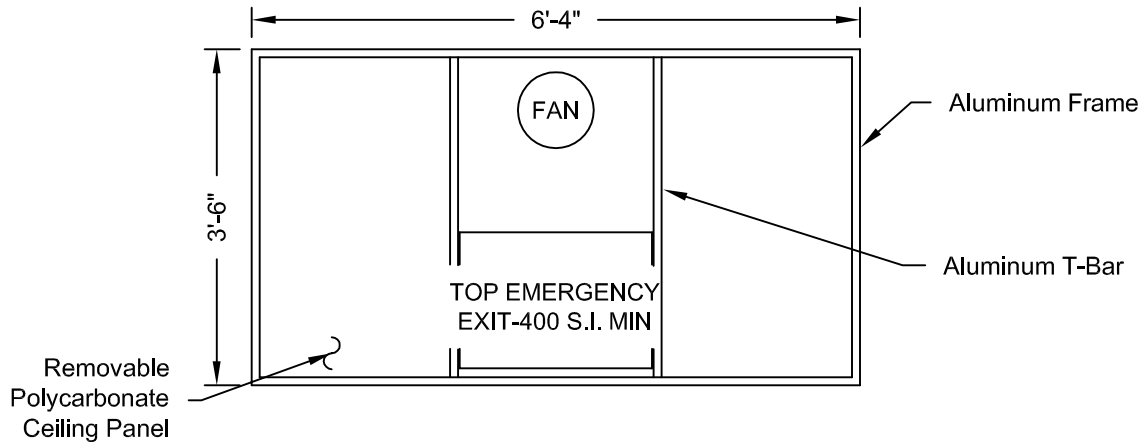
Issue Date: 6/30/10



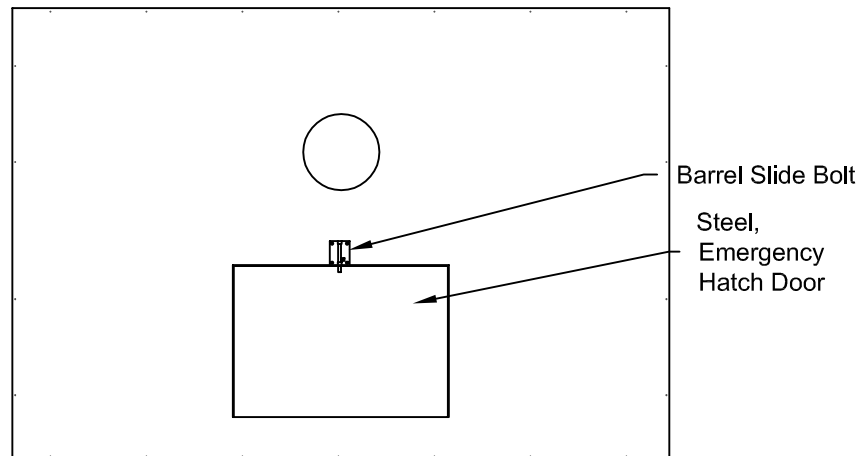
**PHOENIX MODULAR ELEVATOR INC.**  
 912 SOUTH 19TH ST. MT. VERNON, ILLINOIS 62864  
 PHONE: (618)-244-2314 FAX: (618)-244-1923  
 E-mail: info@phoenixmodularelevator.com  
 Web page: www.phoenixmodularelevator.com

PLAN VIEW - front/rear exit stretcher compliant elevator car

SIZE A	REV	REV. DATE	FILE NO.
SCALE: N.T.S.	DATE: 2/23/05	T.H.	DWG NO. SFR-C2



## REFLECTIVE CEILING PLAN



## ROOF PLAN VIEW EMERGENCY EXIT DOOR

Issue Date: 6/30/10

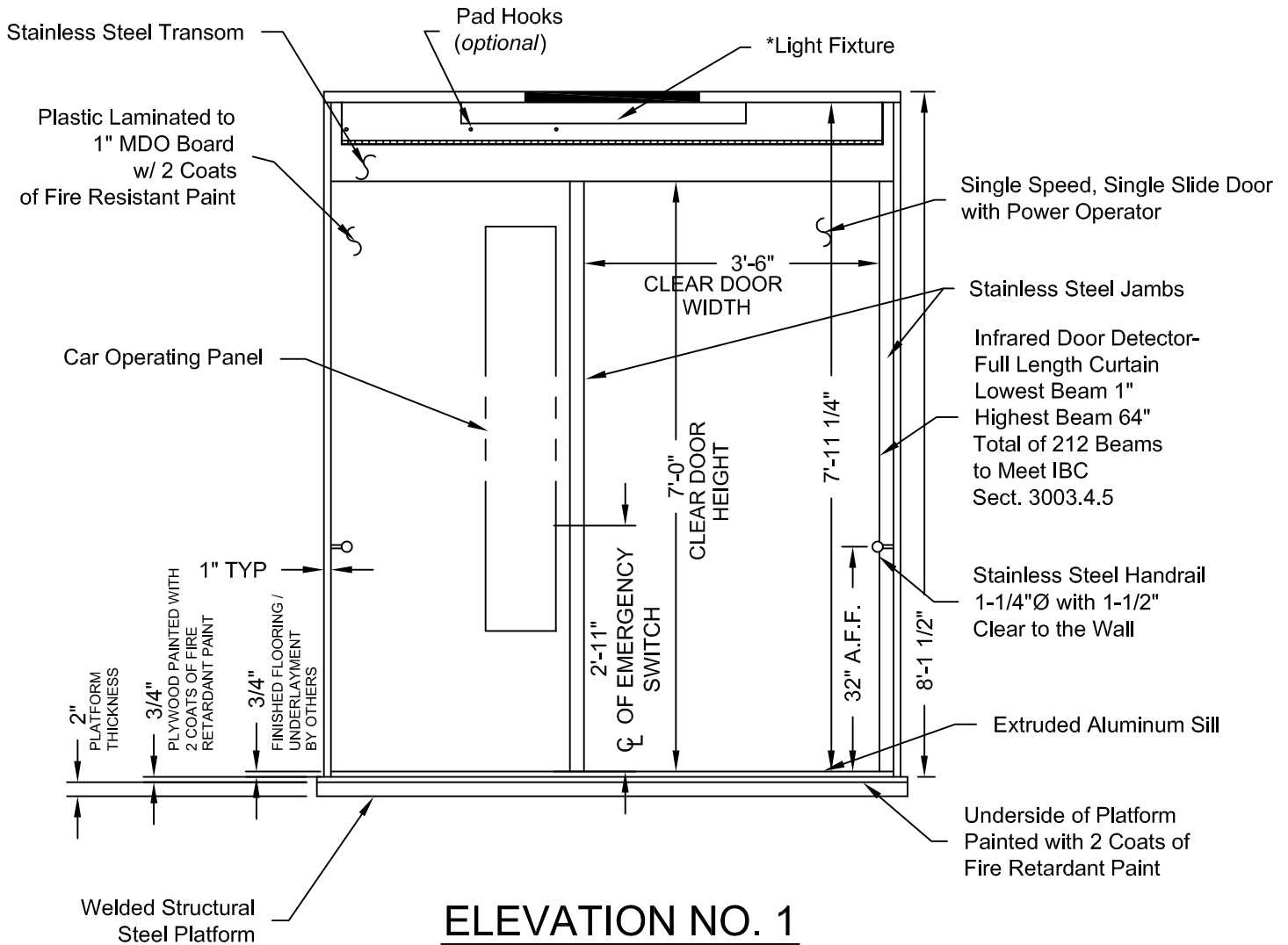


**PHOENIX MODULAR ELEVATOR INC.**  
 912 SOUTH 19TH ST. MT. VERNON, ILLINOIS 62864  
 PHONE: (618)-244-2314 FAX: (618)-244-1923  
 E-mail: info@phoenixmodularelevator.com  
 Web page: www.phoenixmodularelevator.com

CEILING PLAN - front/rear exit stretcher compliant elev. car

SIZE A	REV	REV. DATE	FILE NO.
SCALE: N.T.S.	DATE: 2/23/05	T.H.	DWG NO. SFR-C3

\* - LIGHT BULBS & COVERS SUPPLIED BY OTHERS



Issue Date: 6/30/10

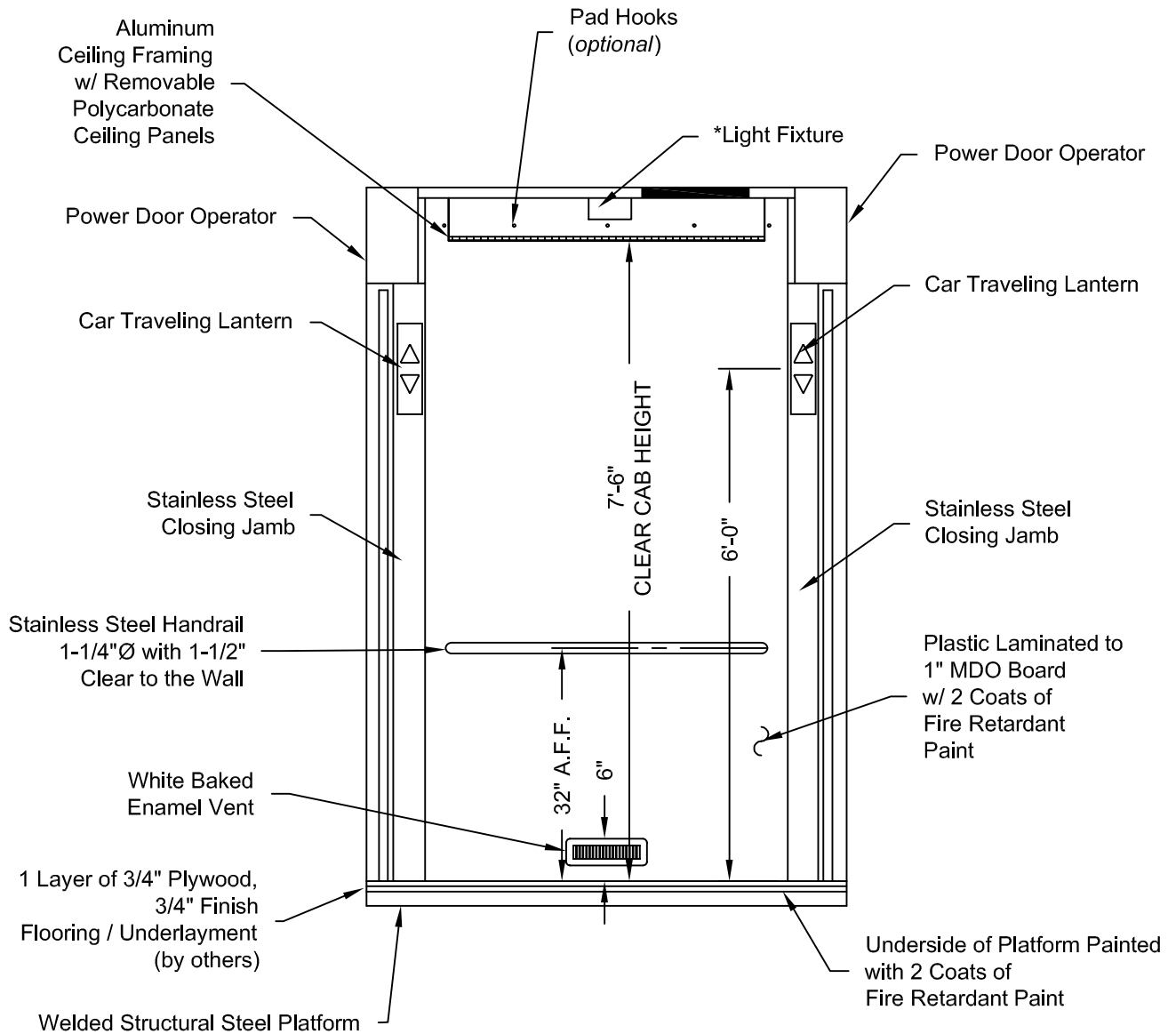


**PHOENIX MODULAR ELEVATOR INC.**  
 912 SOUTH 19TH ST. MT. VERNON, ILLINOIS 62864  
 PHONE: (618)-244-2314 FAX: (618)-244-1923  
 E-mail: info@phoenixmodularelevator.com  
 Web page: www.phoenixmodularelevator.com

**ELEVATION NO. 1 - front/rear exit stretcher size elev. car**

SIZE A	REV	REV. DATE	FILE NO.
SCALE: N.T.S.	DATE: 2/23/05	T.H.	DWG NO. SFR-C4

\* - LIGHT BULBS & COVERS SUPPLIED BY OTHERS



ELEVATION NO. 2

Issue Date: 6/30/10

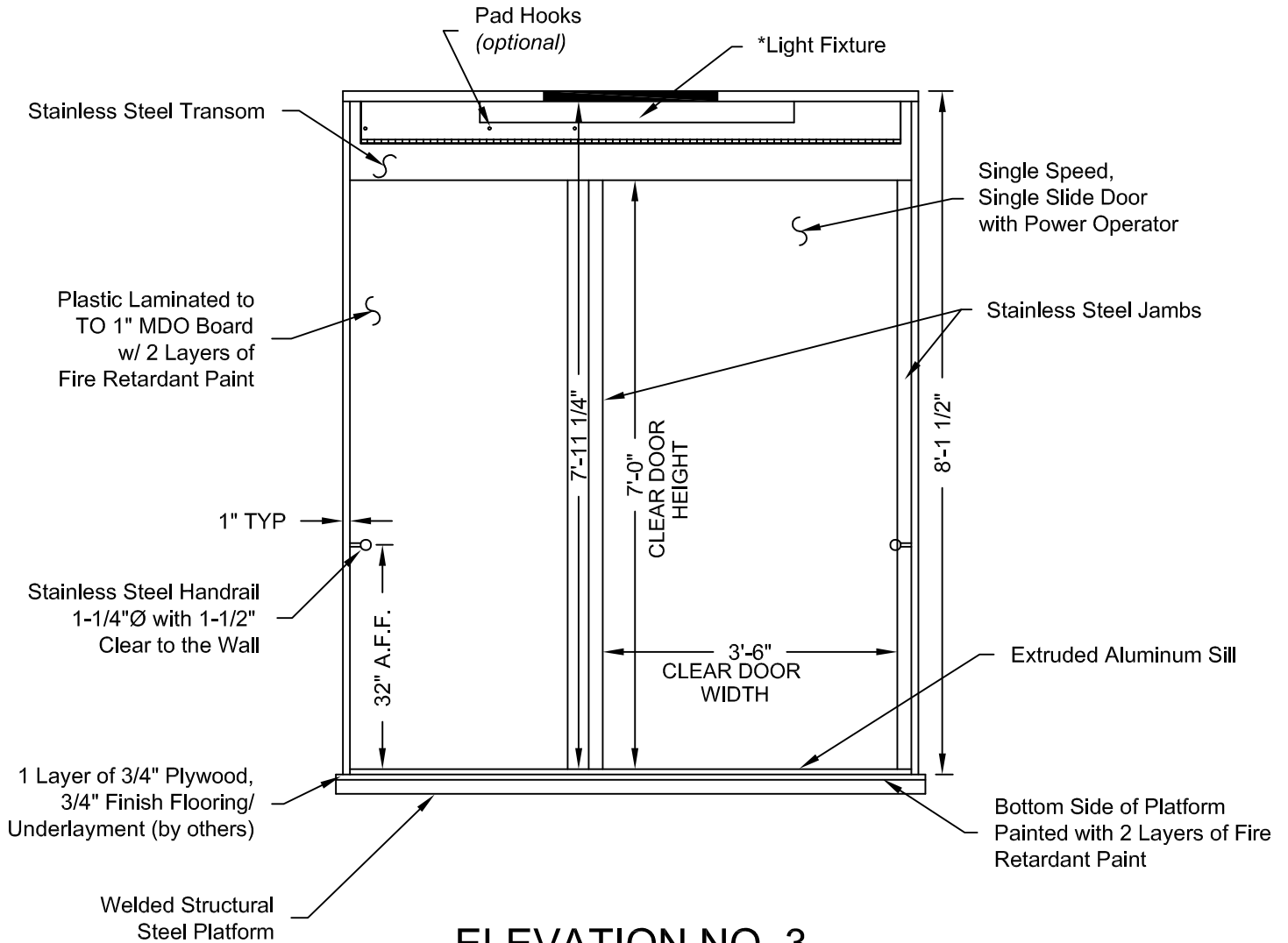


**PHOENIX MODULAR ELEVATOR INC.**  
 912 SOUTH 19TH ST. MT. VERNON, ILLINOIS 62864  
 PHONE: (618)-244-2314 FAX: (618)-244-1923  
 E-mail: info@phoenixmodularelevator.com  
 Web page: www.phoenixmodularelevator.com

ELEVATION NO. 2 - front/rear exit stretcher compliant car

SIZE A	REV	REV. DATE	FILE NO.
SCALE: N.T.S.	DATE: 2/23/05	T.H.	DWG NO. SFR-C5

\* - LIGHT BULBS & COVERS SUPPLIED BY OTHERS



**ELEVATION NO. 3**

Issue Date: 6/30/10

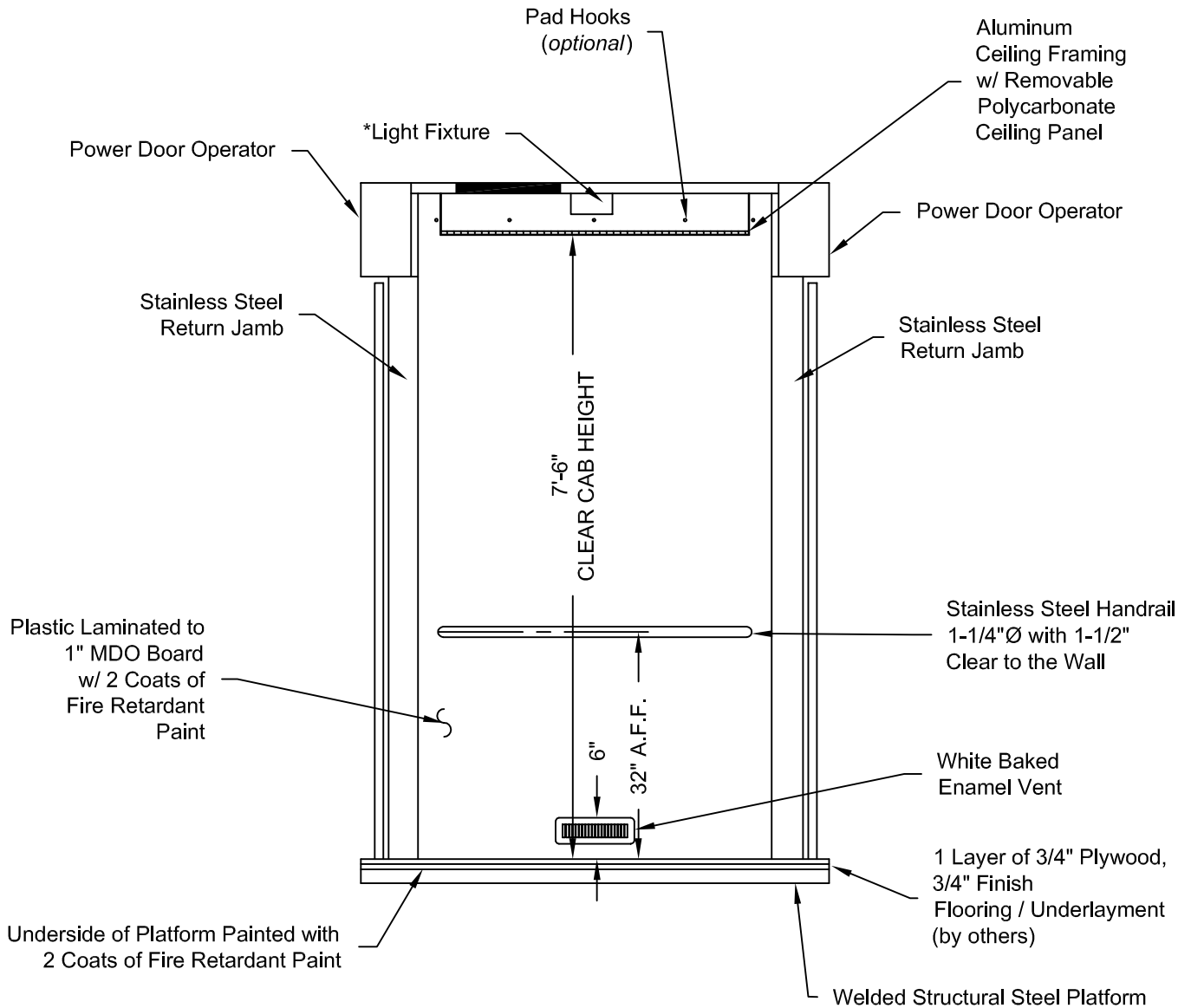


**PHOENIX MODULAR ELEVATOR INC.**  
 912 SOUTH 19TH ST. MT. VERNON, ILLINOIS 62864  
 PHONE: (618)-244-2314 FAX: (618)-244-1923  
 E-mail: info@phoenixmodularelevator.com  
 Web page: www.phoenixmodularelevator.com

**ELEVATION NO.3 - front/rear exit stretcher compliant car**

SIZE A	REV	REV. DATE	FILE NO.
SCALE: N.T.S.	DATE: 2/23/05 T.H.	DWG NO. SCF-C6	

\* - LIGHT BULBS & COVERS SUPPLIED BY OTHERS



**ELEVATION NO. 4**

Issue Date: 6/30/10



**PHOENIX MODULAR ELEVATOR INC.**  
 912 SOUTH 19TH ST. MT. VERNON, ILLINOIS 62864  
 PHONE: (618)-244-2314 FAX: (618)-244-1923  
 E-mail: info@phoenixmodularelevator.com  
 Web page: www.phoenixmodularelevator.com

**ELEVATION NO. 4 - front/rear exit stretcher compliant car**

SIZE A	REV	REV. DATE	FILE NO.
SCALE: N.T.S.	DATE: 2/23/05	T.H.	DWG NO. SFR-C7