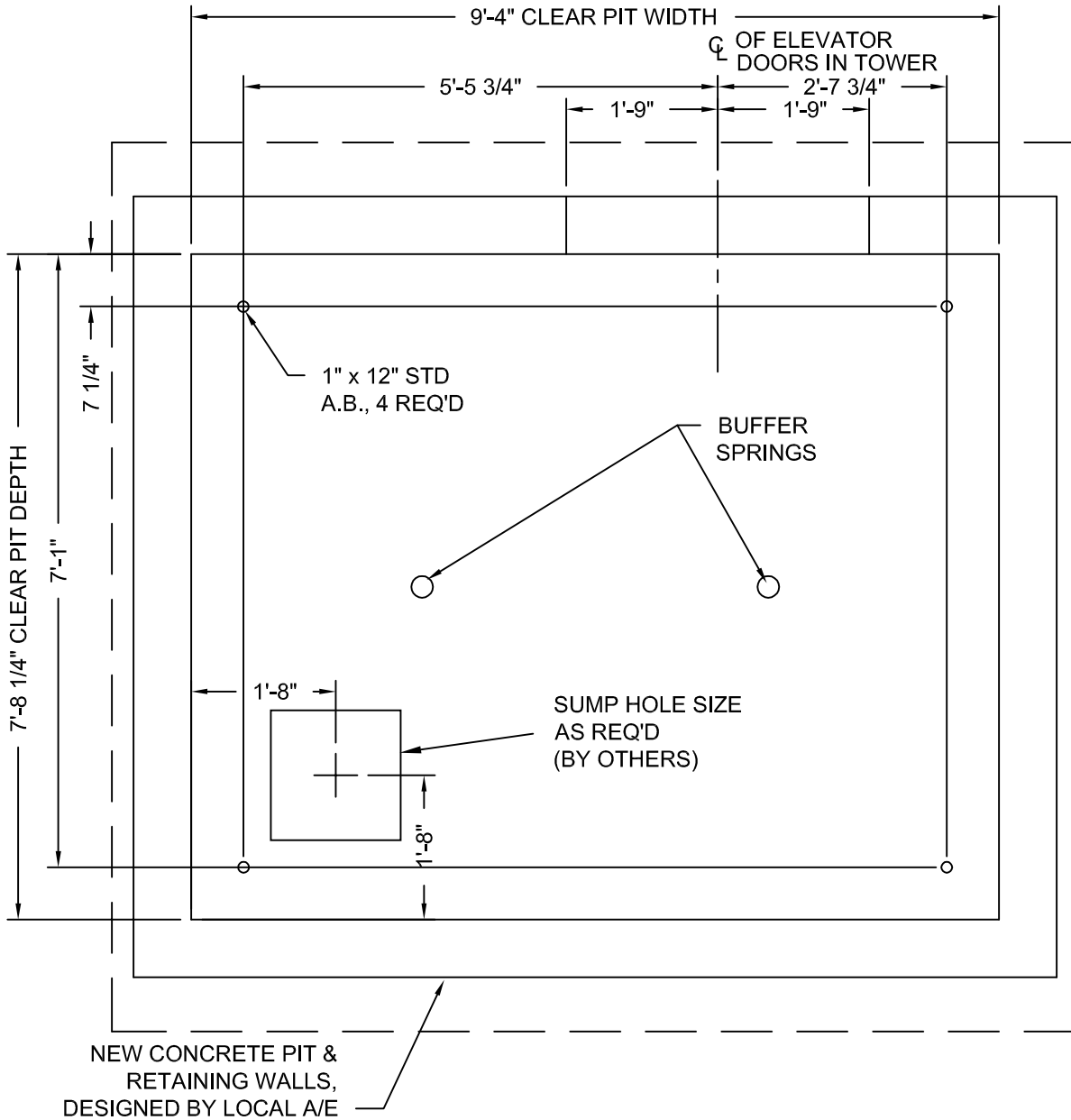


DRAWINGS ARE FOR
 REFERENCE USE ONLY
 AND ARE NOT INTENDED
 FOR PURPOSES OF
 CONSTRUCTION.



MODEL: AC3000 SF / SFR
 RIGHT HAND EXIT SHOWN - LEFT HAND EXIT OPPOSITE

AC4000 TYPICALLY USES HOLED JACK. ONLY UNDER CERTAIN CIRCUMSTANCES CAN HOLELESS JACKS BE USED.

Issue Date: 6/24/10

PHOENIX MODULAR ELEVATOR INC.
 912 SOUTH 19TH ST. MT. VERNON, ILLINOIS 62864
 PHONE: (618)-244-2314 FAX: (618)-244-1923
 E-mail: info@phoenixmodularelevator.com
 Web page: www.phoenixmodularelevator.com

MODEL SF / SFR PIT PLAN - HOLELESS JACKS

SIZE A	REV	REV. DATE	FILE NO.
SCALE: 1/2"=1'-0"	DATE: 1/4/05 T.H.	DWG NO.	SFX-P2

