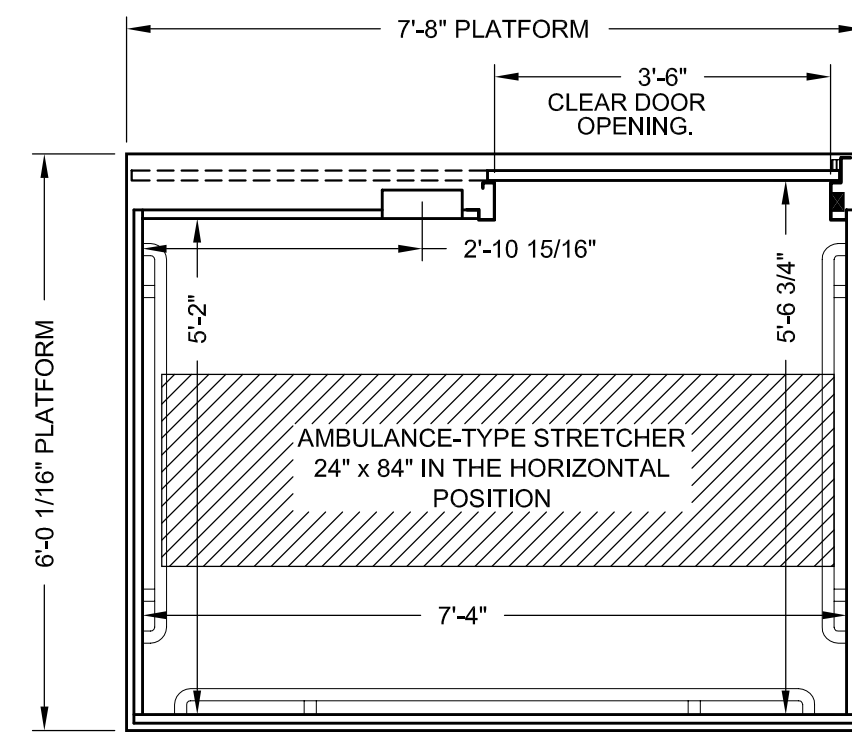
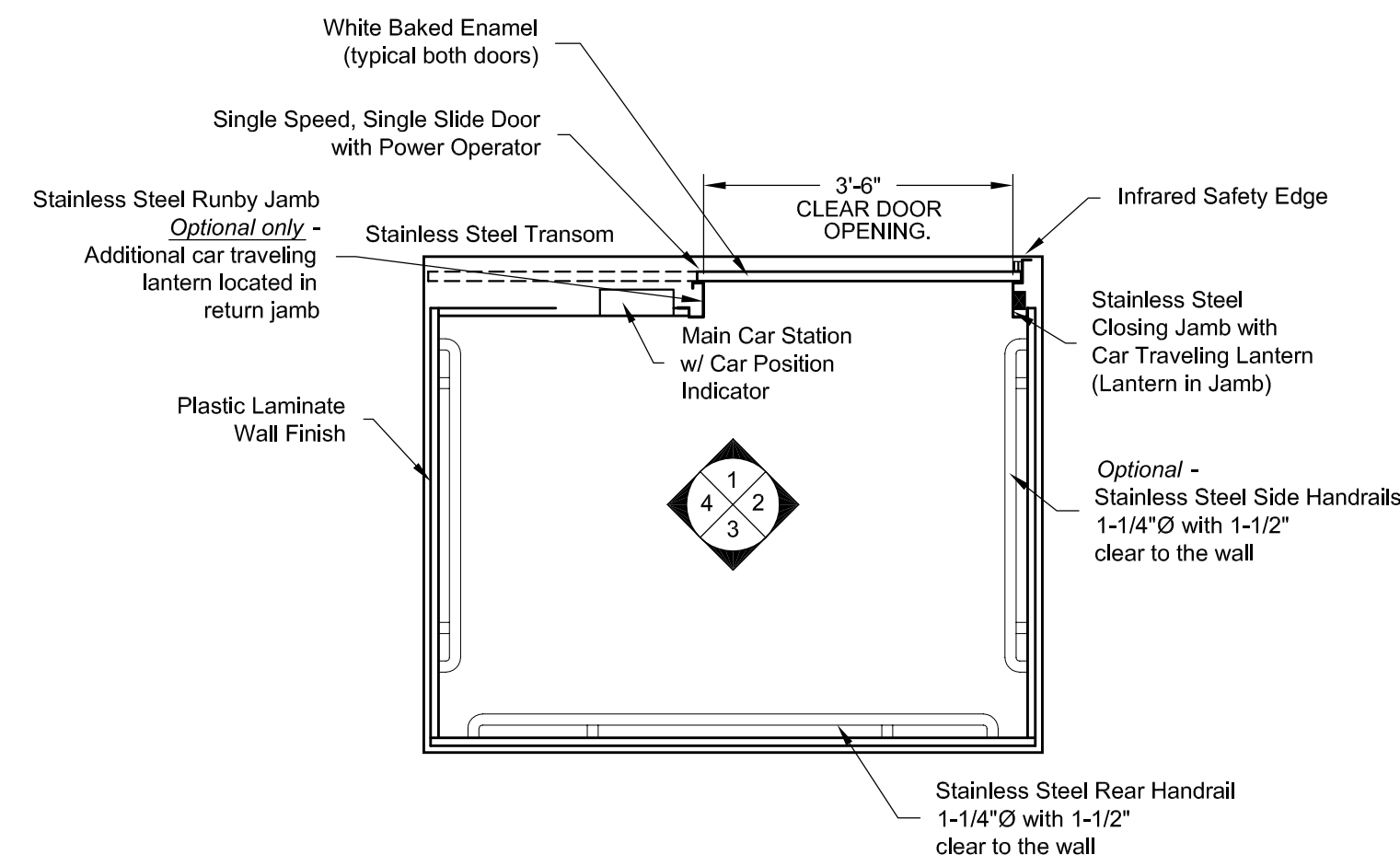


- CAB DOOR DESIGNATIONS REFERENCED FROM INSIDE OF CAB -

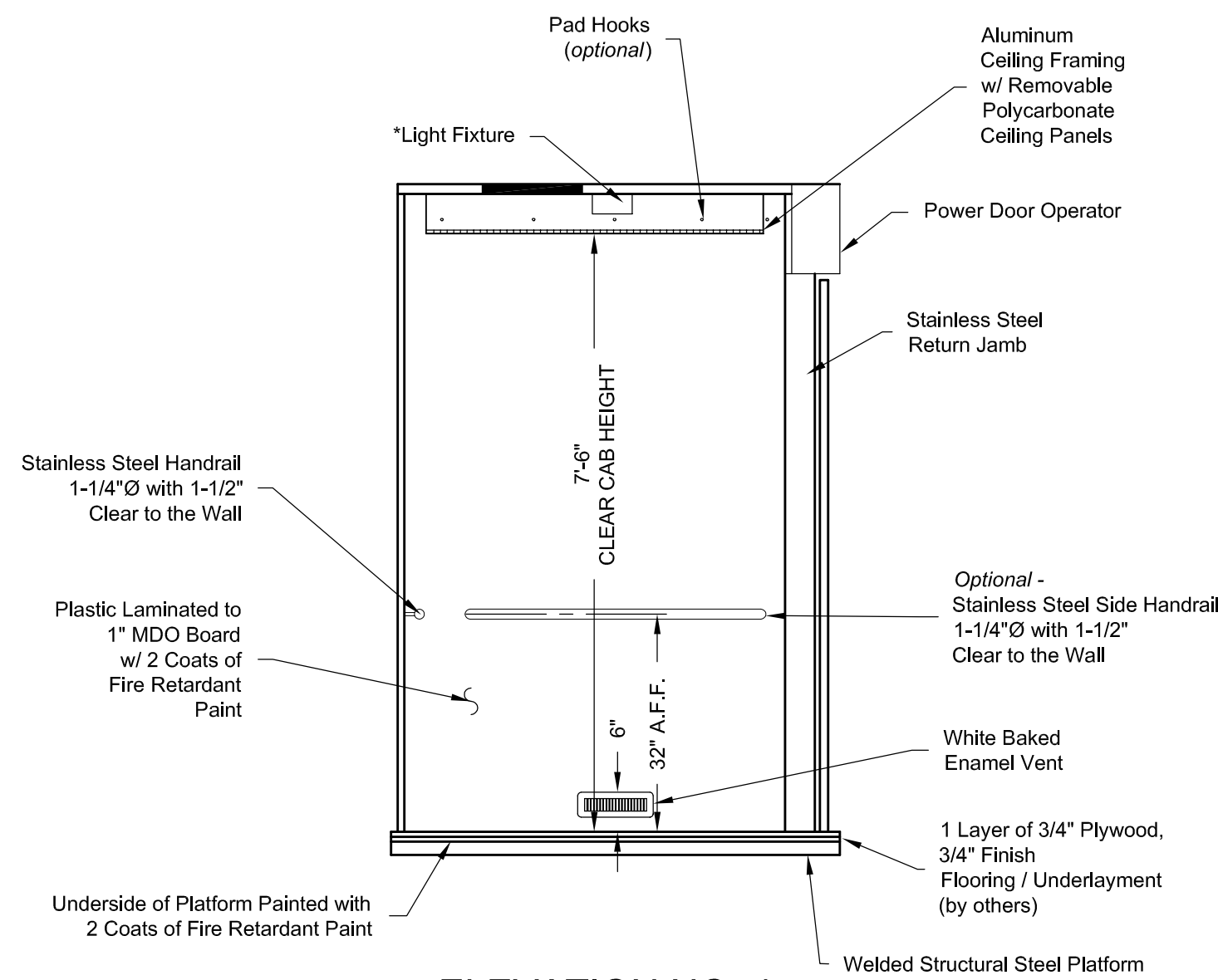
\* - LIGHT BULBS & COVERS SUPPLIED BY OTHERS



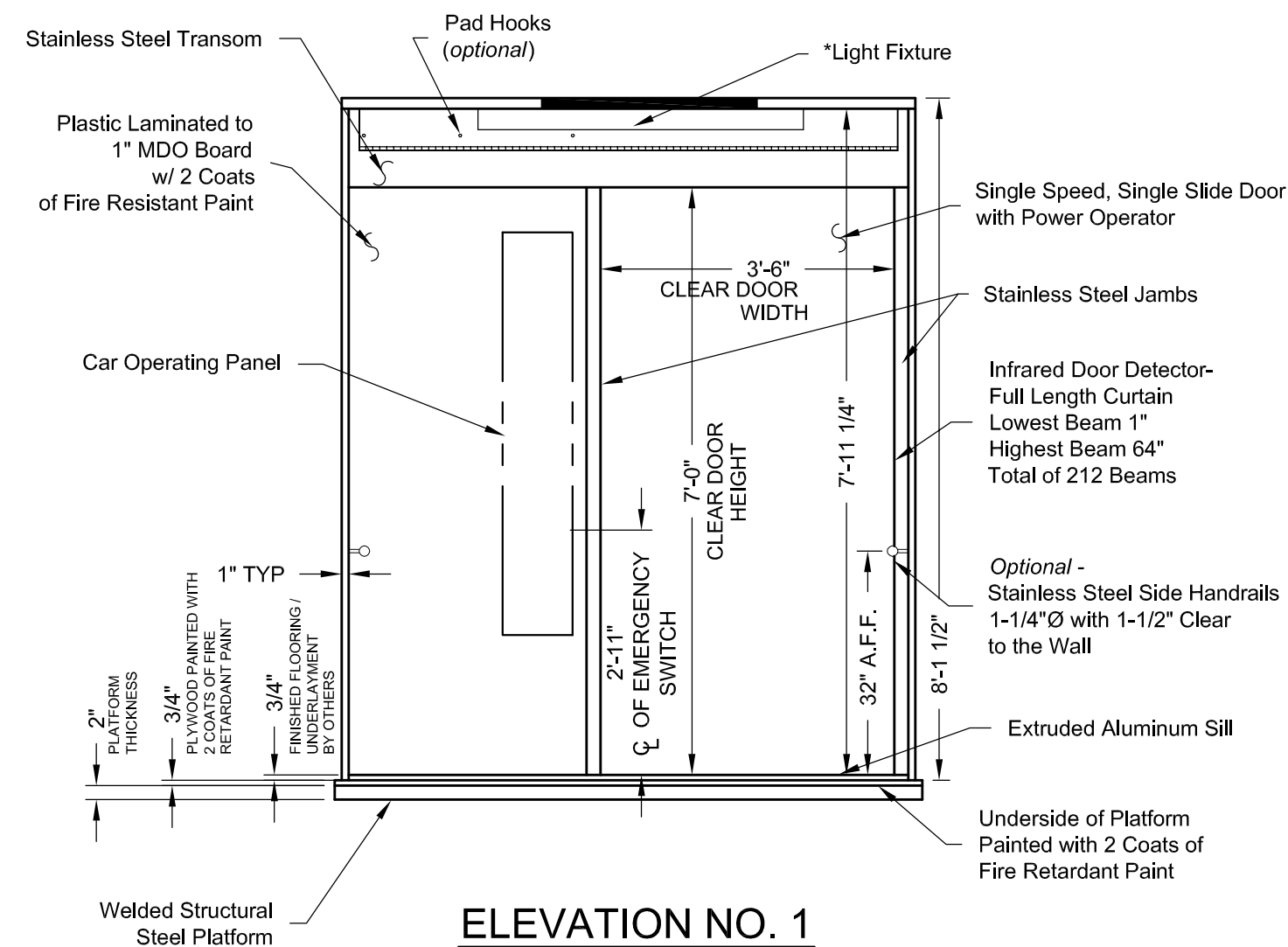
PLAN VIEW



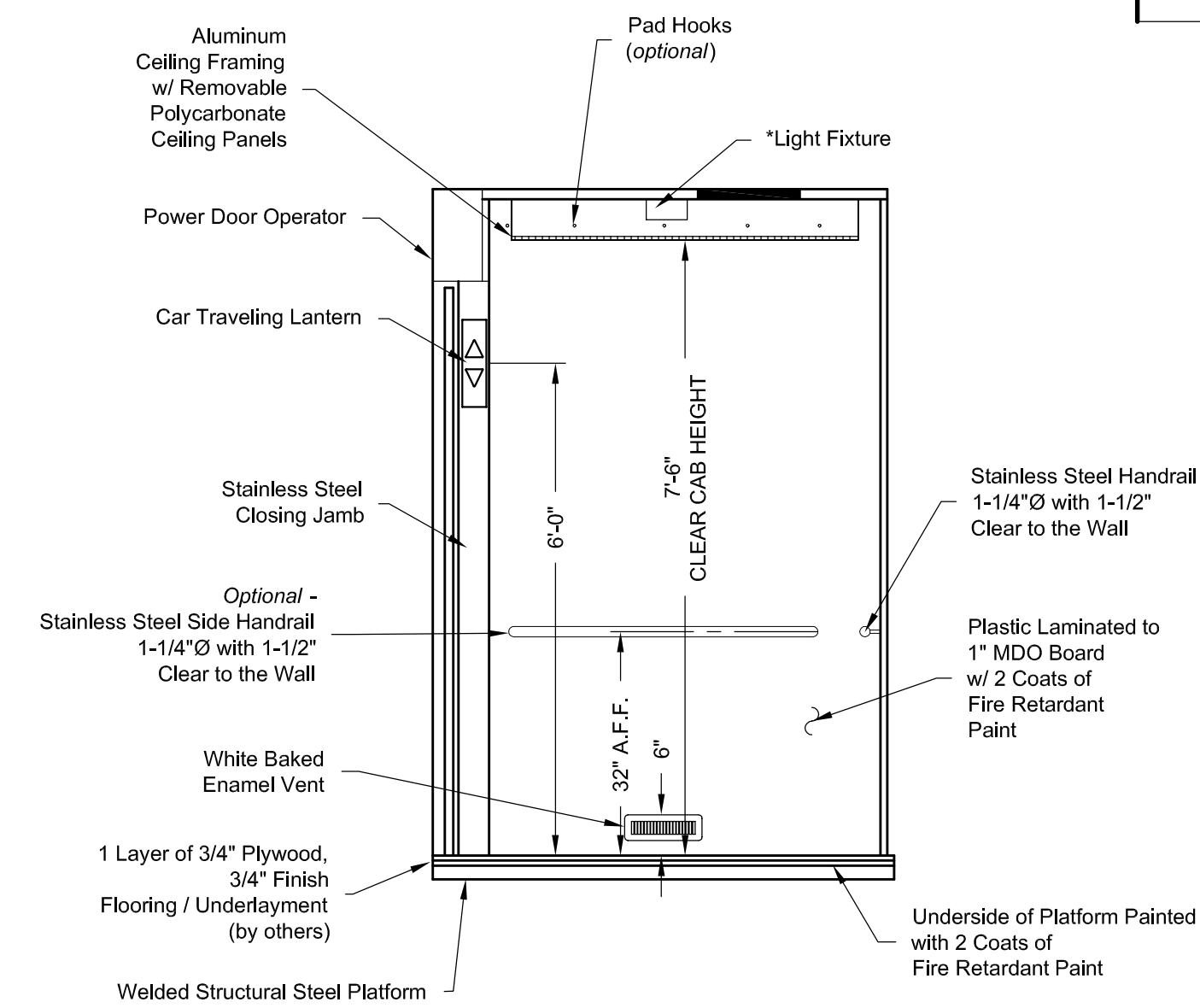
PLAN VIEW  
RIGHT FRONT DOOR  
(MIRROR IMAGE IS AVAILABLE)



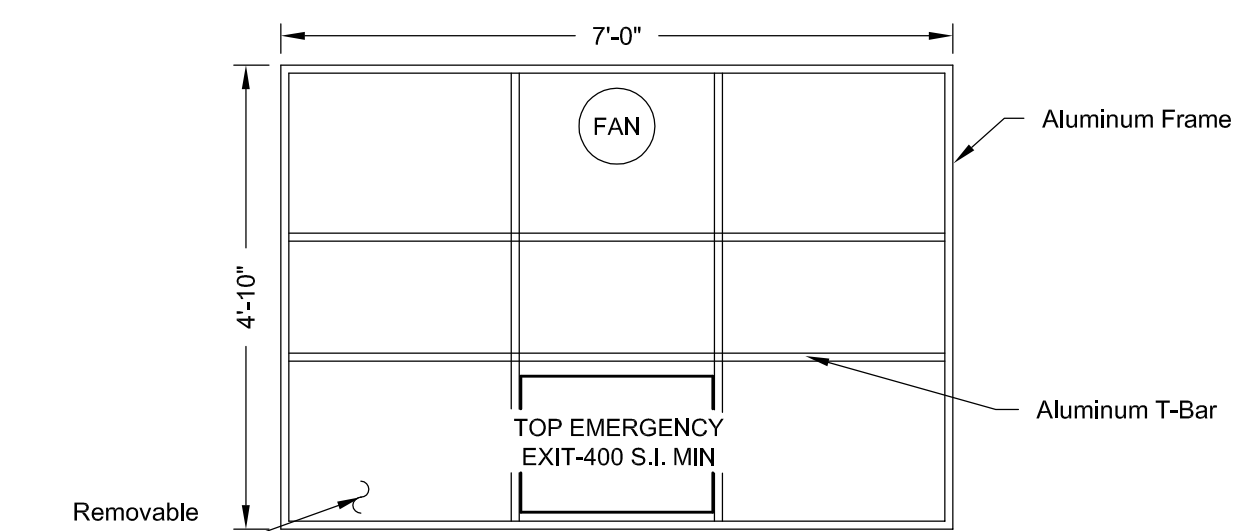
ELEVATION NO. 4



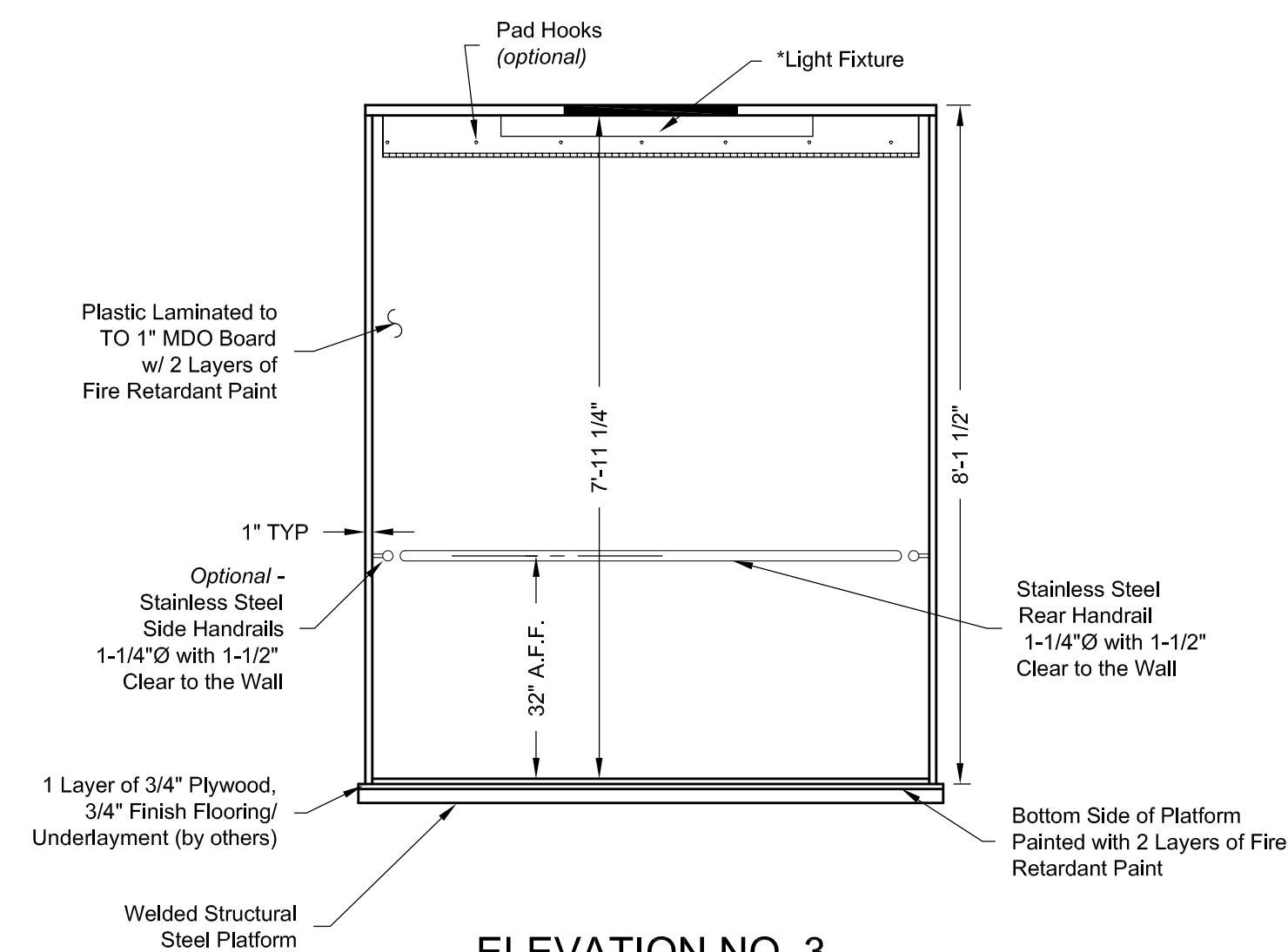
ELEVATION NO. 1



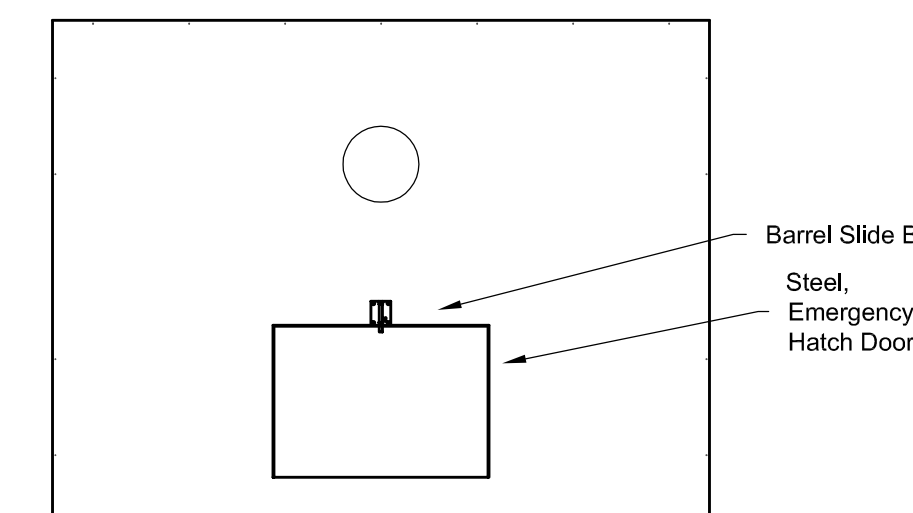
ELEVATION NO. 2



REFLECTIVE CEILING PLAN



ELEVATION NO. 3



ROOF PLAN VIEW  
EMERGENCY EXIT DOOR

PASSENGER ELEVATOR CAR

CAB CANOPY: (2) LAYERS OF 3/4" PLYWOOD WITH EXTERIOR SURFACES PAINTED WITH FIRE RETARDANT PAINT
DOOR PANEL(S): 16 GAUGE REINFORCED HOLLOW METAL. CAR SIDE FINISH (SEE BELOW)
FRONT RETURN WALL: 1" PREMIUM PARTICLE BOARD CLAD WITH PLASTIC LAMINATE (FINISH AS SELECTED BELOW) CONTAINING CAR OPERATING STATION
CAR WALLS: 1" PREMIUM PARTICLE BOARD CLAD WITH PLASTIC LAMINATE (FINISH AS SELECTED BELOW) WITH REMAINING SURFACE PAINTED WITH TWO COATS OF FIRE RETARDANT PAINT.
SUSPENDED ISLAND CEILING: CEILING TILES - REMOVABLE TWIN WALL POLYCARBONATE CEILING FRAME - ALUMINUM TEE
LIGHTING: FLUORESCENT TUBES ABOVE CEILING TILES TWO FIXTURES (BULBS AND COVERS BY OTHERS) NOTE: EMERGENCY CAR LIGHTING IS PROVIDED (BUILT INTO CAR STATION)
CAR CONSTRUCTION AND MATERIALS USED MEET ALL APPLICABLE CODES.
TRANSOM AND JAMB FINISH: #4 SATIN - STAINLESS STEEL
CAR DOOR FINISH: WHITE ENAMEL
WALL FINISH: WILSONART BRAND - PROJECT SPECIFIC
HANDRAIL @ REAR WALL AND OPTIONAL SIDE WALL 1-1/4"Ø - #4SS
1 - SPEED EXHAUST FAN

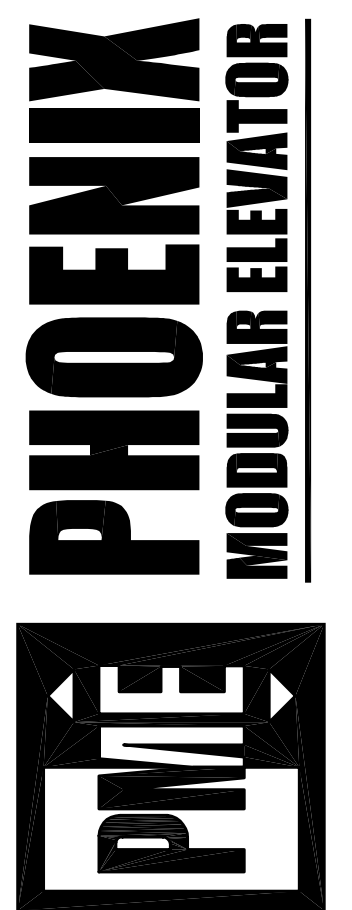
CAPACITY RATING - 3500#

All material for car enclosures shall meet the requirements of ASME A17.1, Sect. 2.14.2

NO.	DATE	BY
REVISIONS		

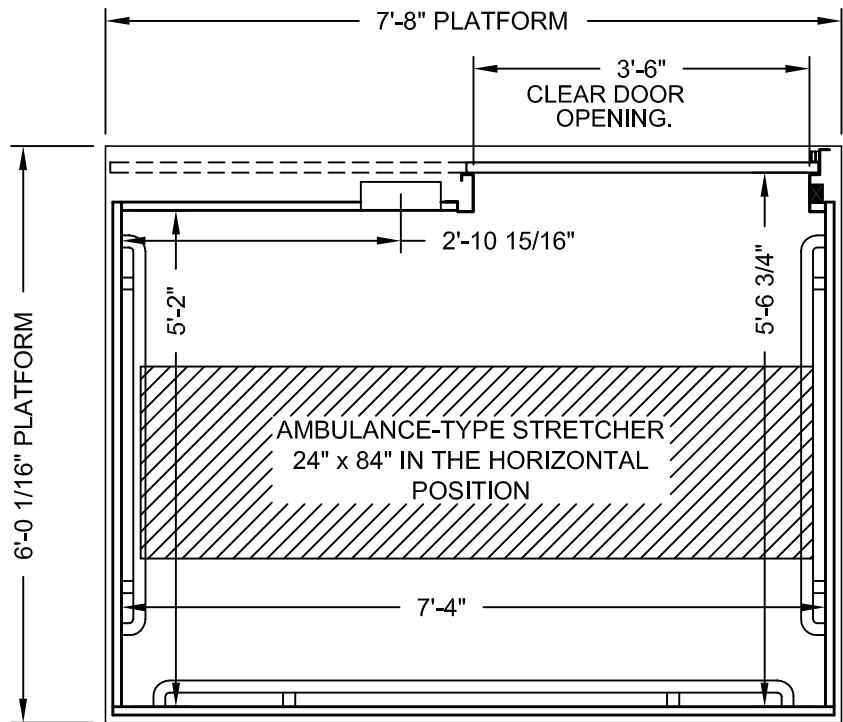
FRONT EXIT  
ADA COMPLIANT  
STRETCHER COMPLIANT

912 SOUTH 19TH ST.  
MT. VERNON, ILLINOIS 62864  
PHONE: (618) 244-2314  
FAX: (618) 244-1923  
www.PhoenixModularElevator.com  
info@phoenixmodularelevator.com



Drawn By: THOUSE
Checked By:
Date: 6/30/10
Job Number:
Drawing Scale: N.T.S.

SHEET NO.  
SLF-C



PLAN VIEW

P.M.E.'s typical front stretcher size elevator car.  
Capacity = 3500 lbs.

Car enclosure - laminate on wood  
*All material for car enclosures meet the requirements of  
ASME A17.1 RULE 2.14.2.1*

Issue Date: 6/30/10

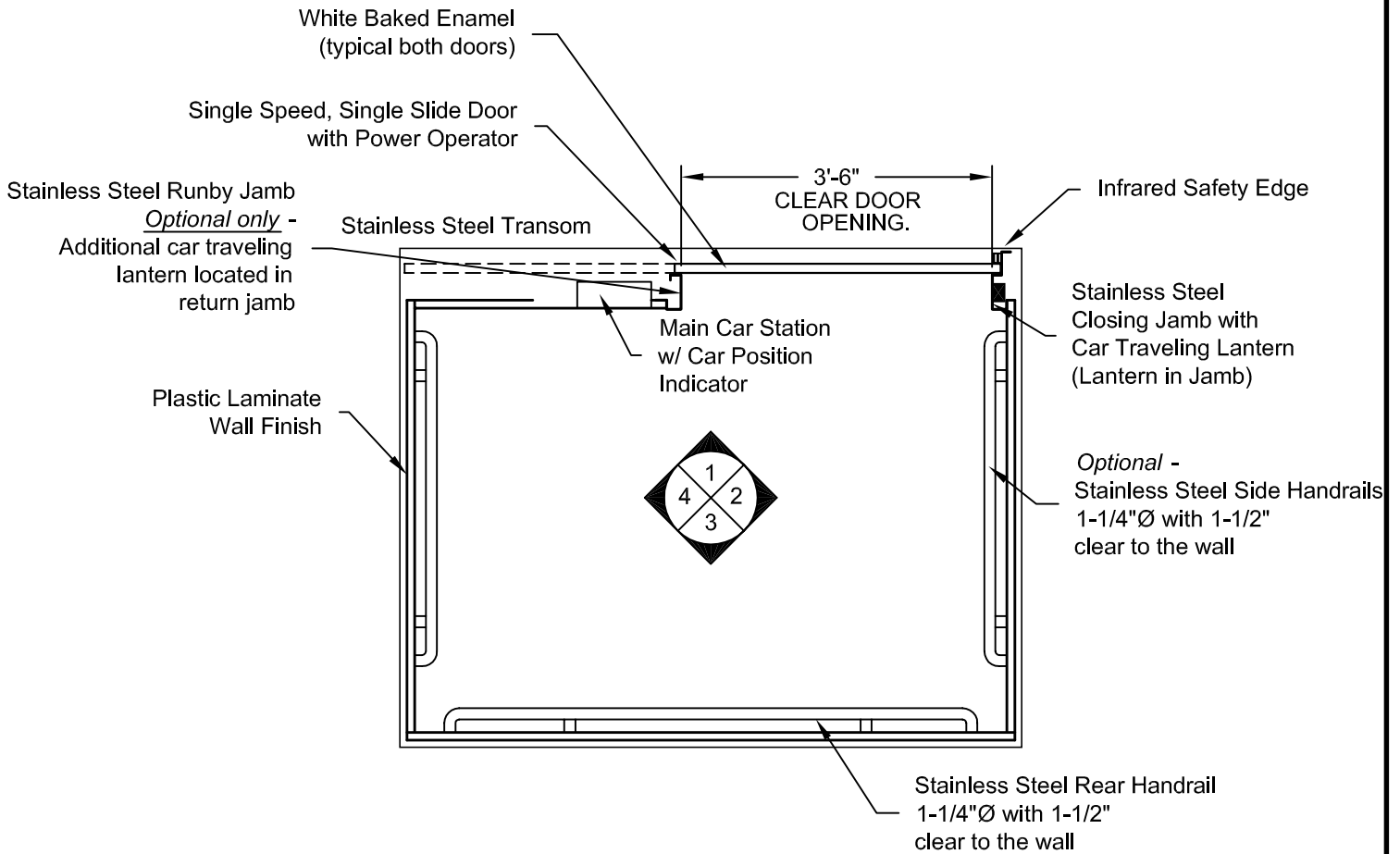


**PHOENIX MODULAR ELEVATOR INC.**  
912 SOUTH 19TH ST. MT. VERNON, ILLINOIS 62864  
PHONE: (618)-244-2314 FAX: (618)-244-1923  
E-mail: info@phoenixmodularelevator.com  
Web page: www.phoenixmodularelevator.com

**FRONT EXIT ELEVATOR CAB**

SIZE A	REV	REV. DATE	FILE NO.
SCALE: N.T.S.	DATE: 2/22/05	T.H.	DWG NO. SLF-C1

- CAB DOOR DESIGNATIONS REFERENCED FROM INSIDE OF CAB -



**PLAN VIEW**  
**RIGHT FRONT DOOR**  
**(MIRROR IMAGE IS AVAILABLE)**

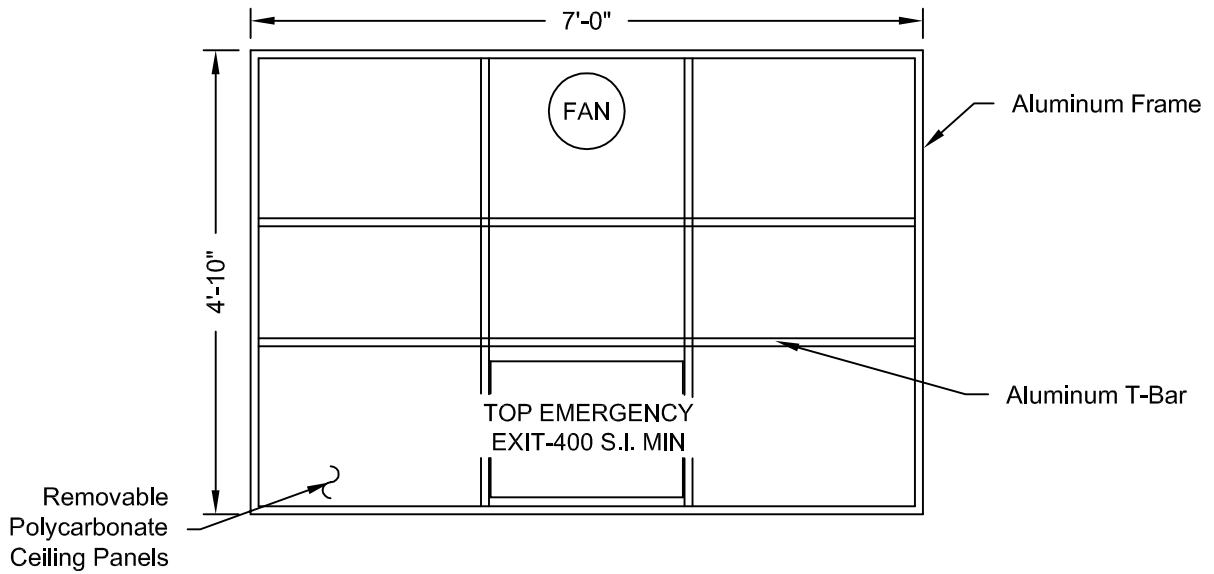
Issue Date: 6/30/10



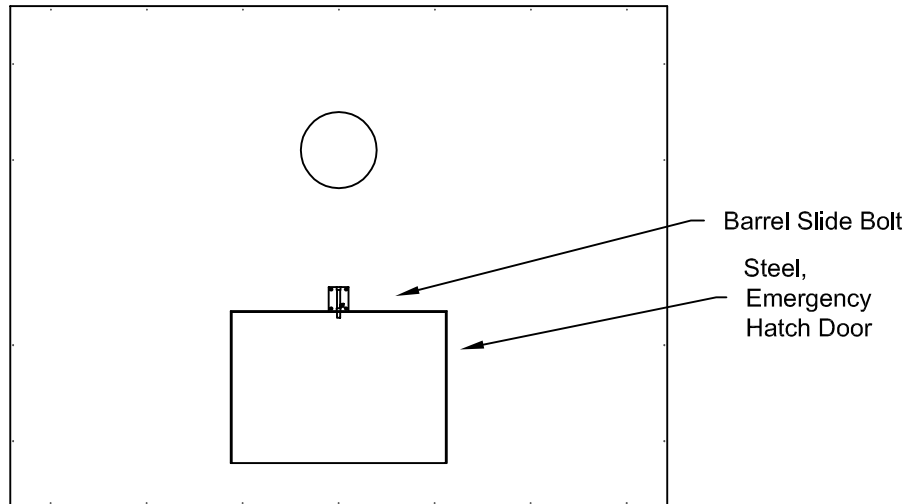
**PHOENIX MODULAR ELEVATOR INC.**  
 912 SOUTH 19TH ST. MT. VERNON, ILLINOIS 62864  
 PHONE: (618)-244-2314 FAX: (618)-244-1923  
 E-mail: info@phoenixmodularelevator.com  
 Web page: www.phoenixmodularelevator.com

**PLAN VIEW - front exit elevator car**

SIZE A	REV	REV. DATE	FILE NO.
SCALE: N.T.S.	DATE: 2/23/05	T.H.	DWG NO. SLF-C2



## REFLECTIVE CEILING PLAN



## ROOF PLAN VIEW EMERGENCY EXIT DOOR

Issue Date: 6/30/10

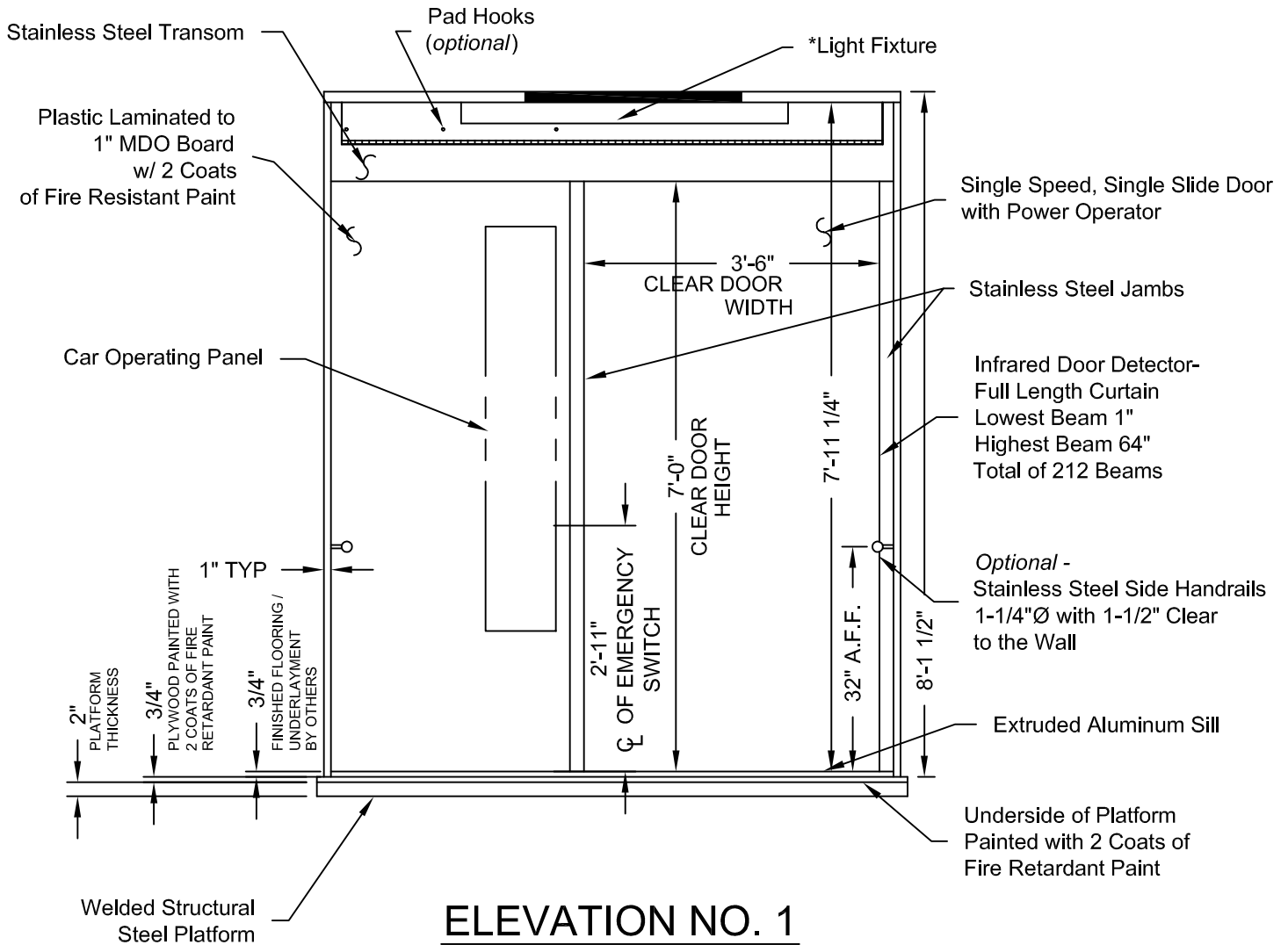


**PHOENIX MODULAR ELEVATOR INC.**  
 912 SOUTH 19TH ST. MT. VERNON, ILLINOIS 62864  
 PHONE: (618)-244-2314 FAX: (618)-244-1923  
 E-mail: info@phoenixmodularelevator.com  
 Web page: www.phoenixmodularelevator.com

### CEILING PLAN - front exit elevator car

SIZE A	REV	REV. DATE	FILE NO.
SCALE: N.T.S.	DATE: 2/23/05	T.H.	DWG NO. SLF-C3

\* - LIGHT BULBS & COVERS SUPPLIED BY OTHERS



Issue Date: 6/30/10

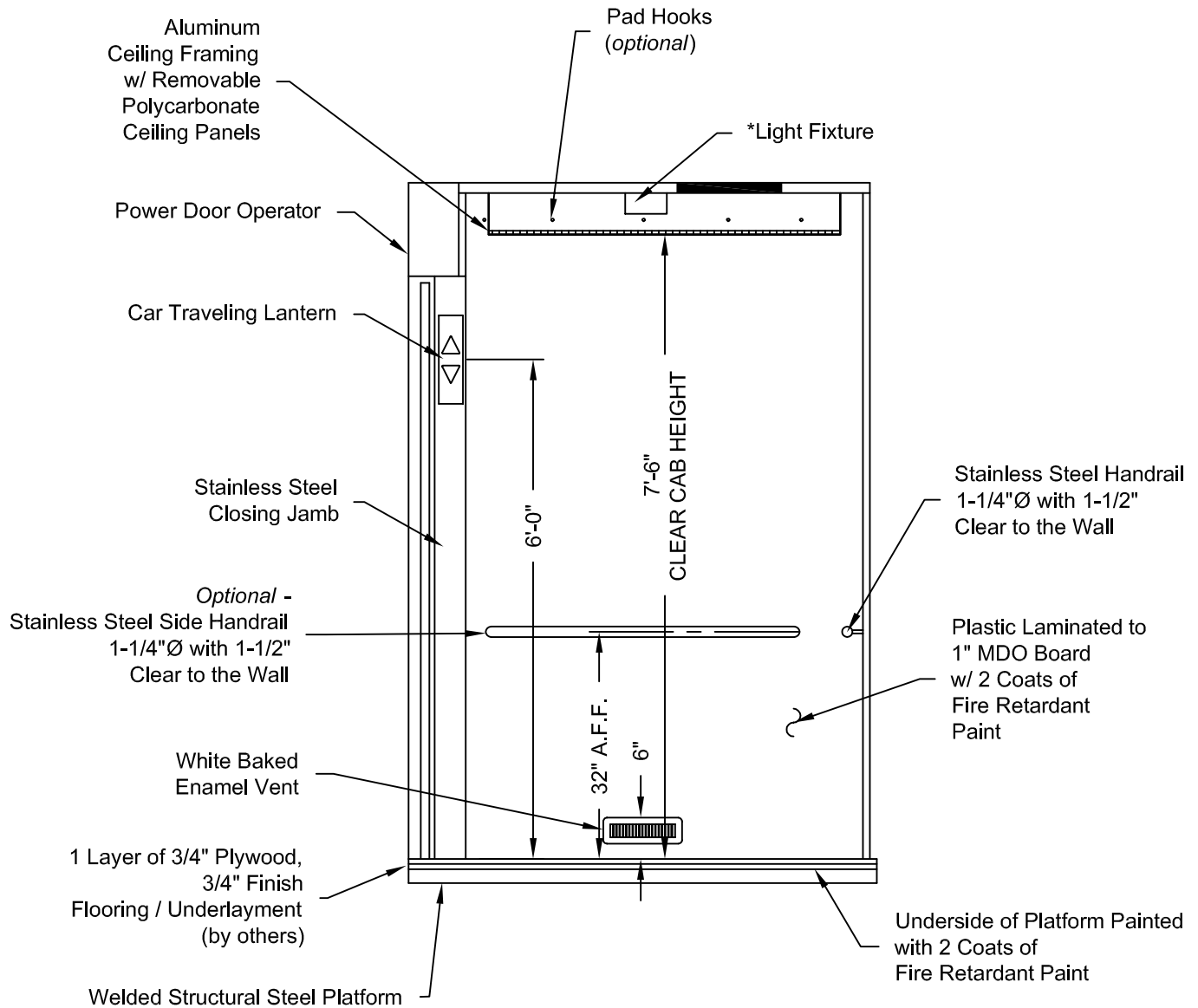


**PHOENIX MODULAR ELEVATOR INC.**  
 912 SOUTH 19TH ST. MT. VERNON, ILLINOIS 62864  
 PHONE: (618)-244-2314 FAX: (618)-244-1923  
 E-mail: info@phoenixmodularelevator.com  
 Web page: www.phoenixmodularelevator.com

**ELEVATION NO. 1 - front exit elevator car**

SIZE A	REV	REV. DATE	FILE NO.
SCALE: N.T.S.	DATE: 2/23/05	T.H.	DWG NO. SLF-C4

\* - LIGHT BULBS & COVERS SUPPLIED BY OTHERS



ELEVATION NO. 2

Issue Date: 6/30/10

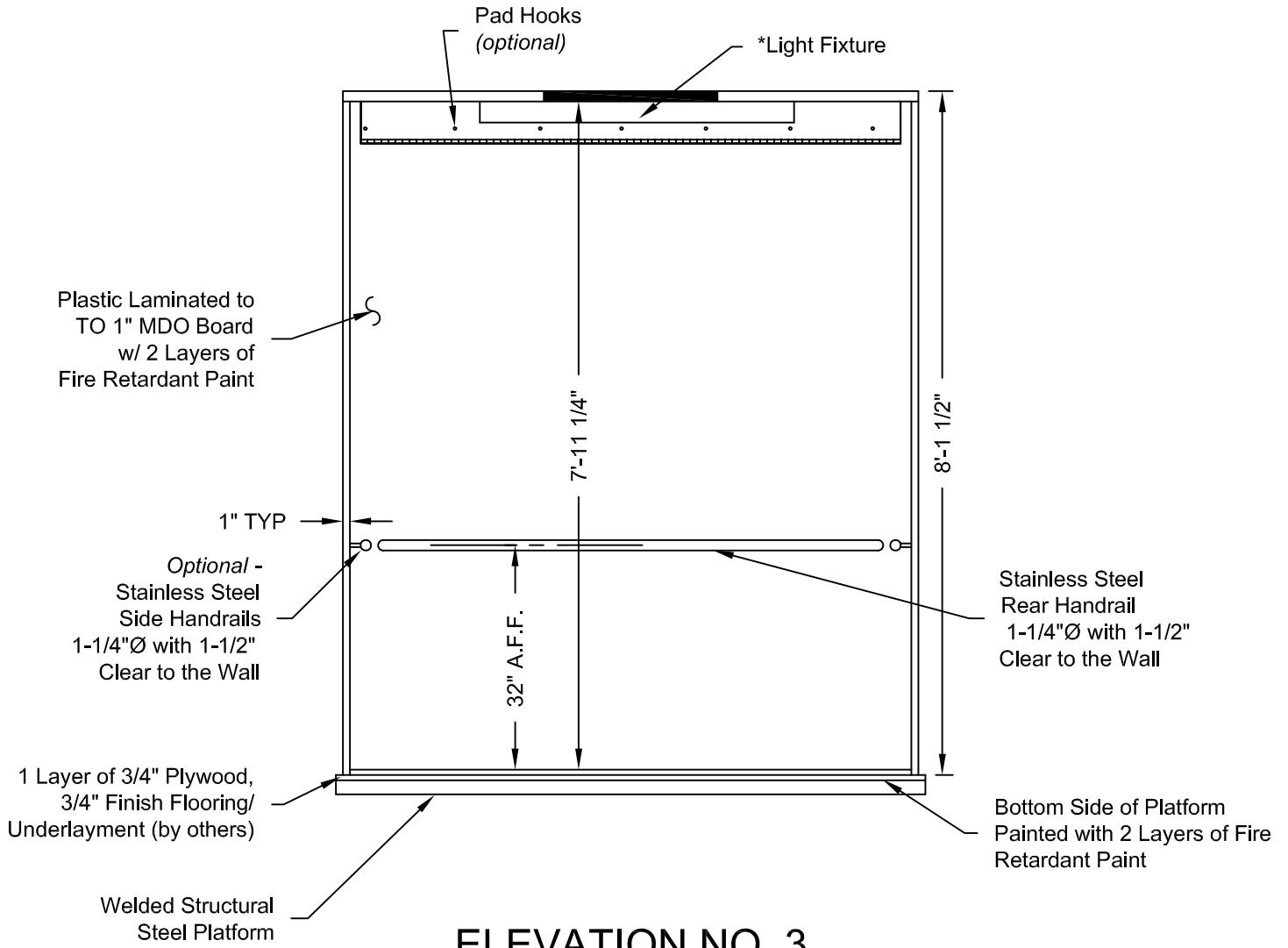


**PHOENIX MODULAR ELEVATOR INC.**  
 912 SOUTH 19TH ST. MT. VERNON, ILLINOIS 62864  
 PHONE: (618)-244-2314 FAX: (618)-244-1923  
 E-mail: info@phoenixmodularelevator.com  
 Web page: www.phoenixmodularelevator.com

**ELEVATION NO. 2 - front exit elevator car**

SIZE A	REV	REV. DATE	FILE NO.
SCALE: N.T.S.	DATE: 2/23/05	T.H.	DWG NO. SLF-C5

\* - LIGHT BULBS & COVERS SUPPLIED BY OTHERS



**ELEVATION NO. 3**

Issue Date: 6/30/10

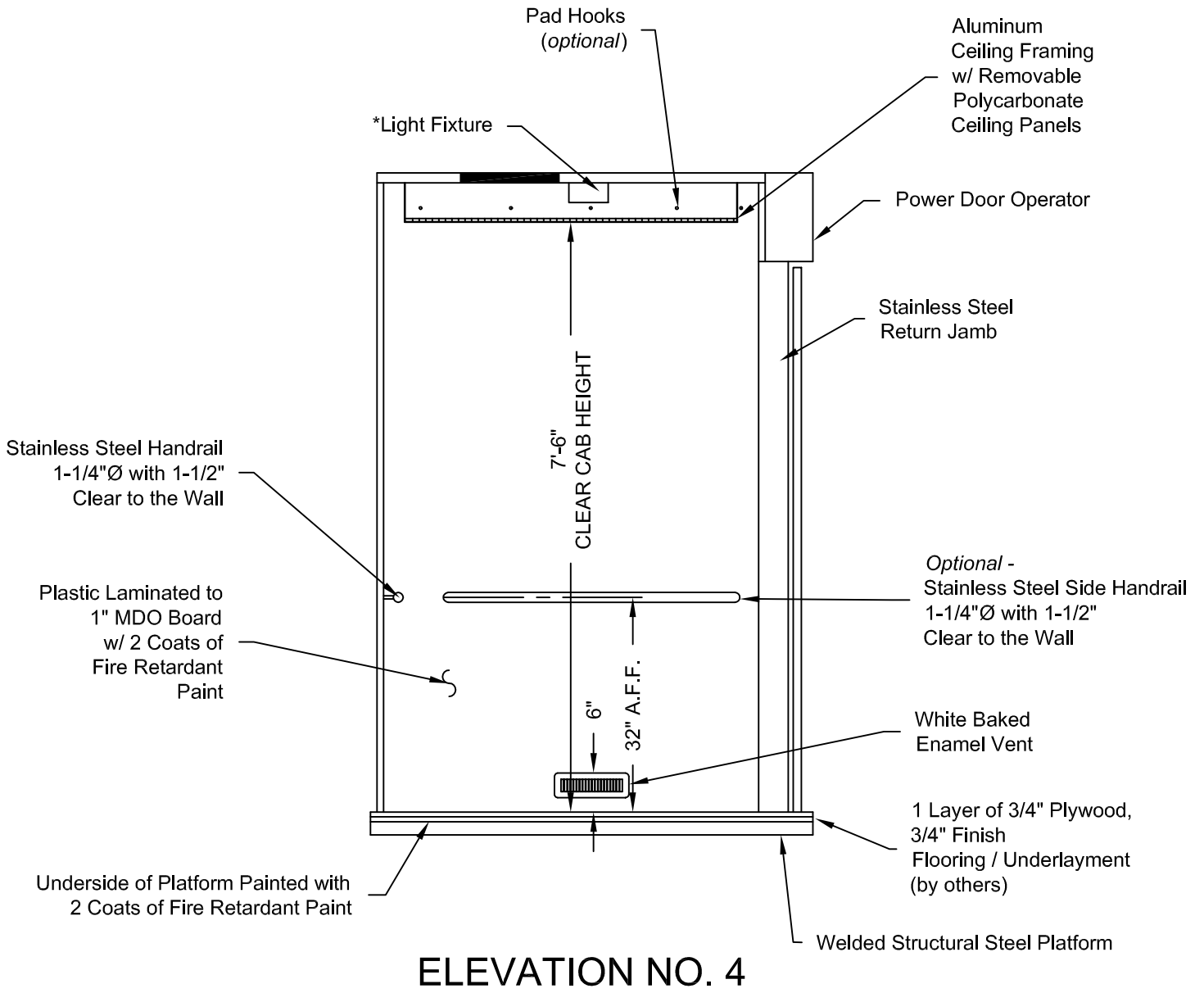


**PHOENIX MODULAR ELEVATOR INC.**  
 912 SOUTH 19TH ST. MT. VERNON, ILLINOIS 62864  
 PHONE: (618)-244-2314 FAX: (618)-244-1923  
 E-mail: info@phoenixmodularelevator.com  
 Web page: www.phoenixmodularelevator.com

**ELEVATION NO.3 - front exit elevator car**

SIZE A	REV	REV. DATE	FILE NO.
SCALE: N.T.S.	DATE: 2/23/05	T.H.	DWG NO. SLF-C6

\* - LIGHT BULBS & COVERS SUPPLIED BY OTHERS



Issue Date: 6/30/10



**PHOENIX MODULAR ELEVATOR INC.**  
 912 SOUTH 19TH ST. MT. VERNON, ILLINOIS 62864  
 PHONE: (618)-244-2314 FAX: (618)-244-1923  
 E-mail: info@phoenixmodularelevator.com  
 Web page: www.phoenixmodularelevator.com

**ELEVATION NO. 4 - front exit elevator car**

SIZE A	REV	REV. DATE	FILE NO.
SCALE: N.T.S.	DATE: 2/23/05	T.H.	DWG NO. SLF-C7