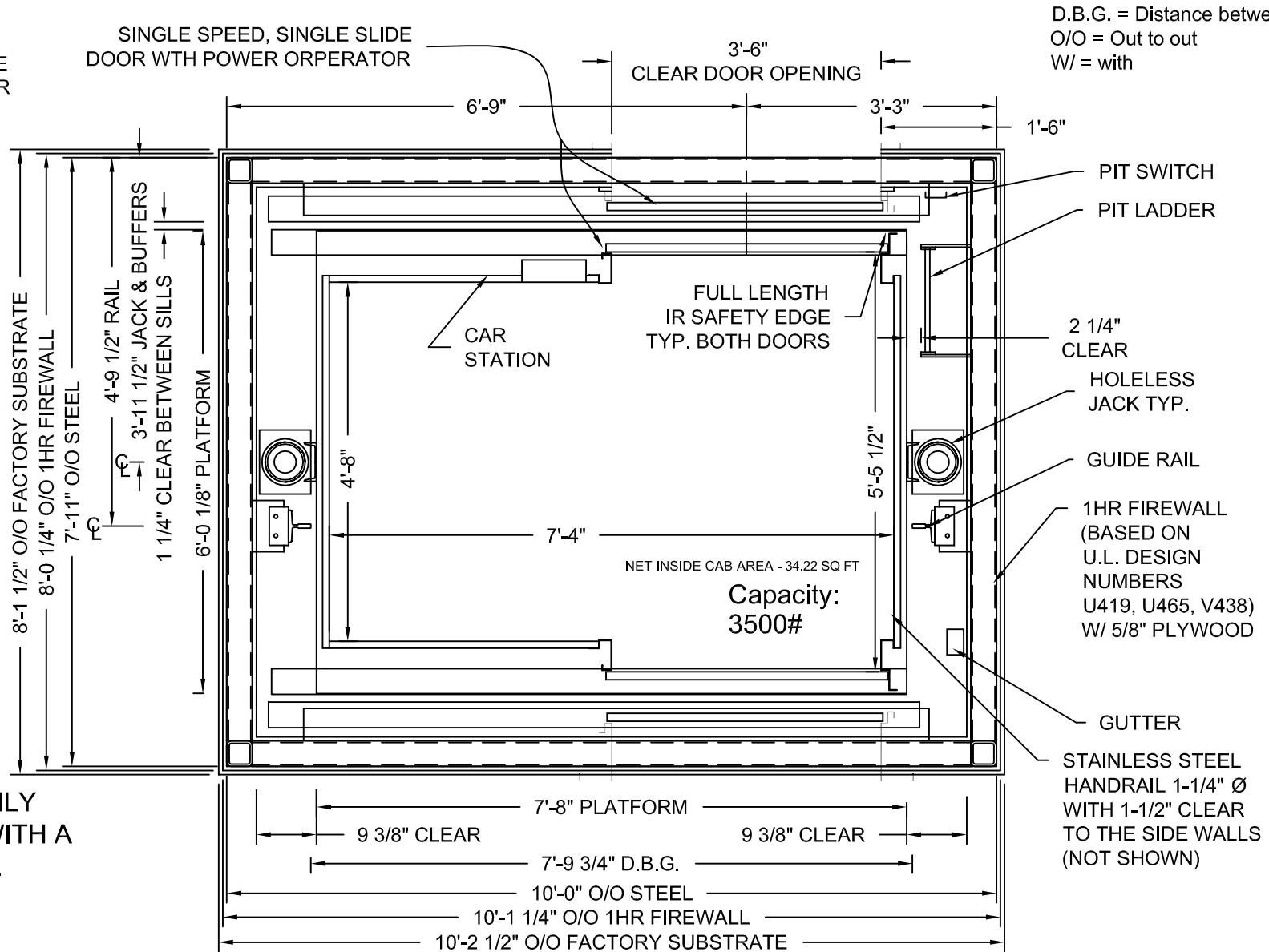


DRAWINGS ARE FOR REFERENCE USE ONLY AND ARE NOT INTENDED FOR PURPOSES OF CONSTRUCTION.



D.B.G. = Distance between guide rails.
 O/O = Out to out
 W/ = with

AC4000 IS ONLY AVAILABLE WITH A HOLED JACK.

STRETCHER COMPLIANT
 ADA COMPLIANT

RIGHT HAND EXIT SHOWN - LEFT HAND EXIT OPPOSITE
 ONE HOUR SHAFT RATING

MEETS IBC 2006 SECTION 3002.4
 Designed for 24"x84" ambulance stretcher / gurney

Issue Date: 8/9/00



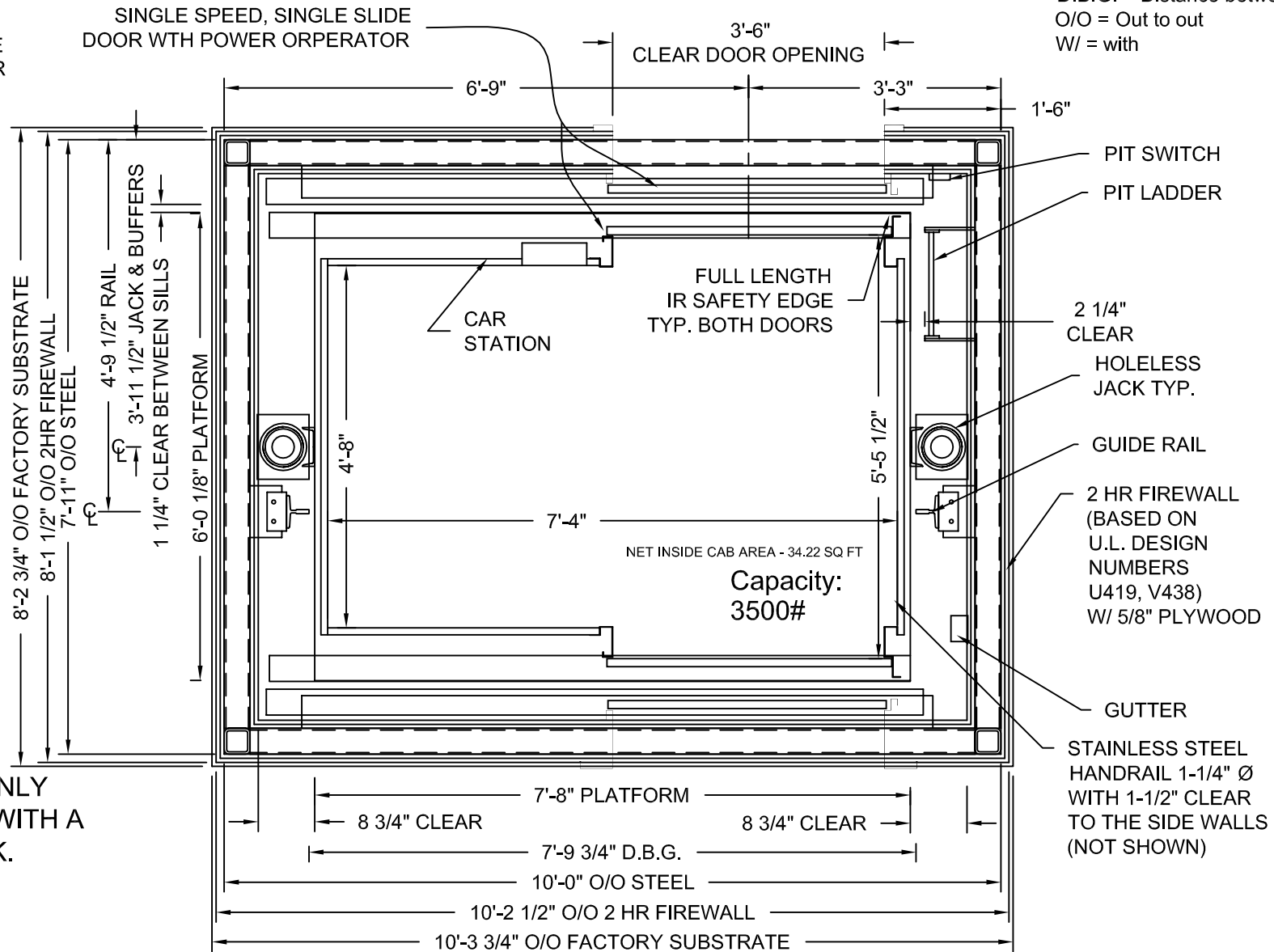
PHOENIX MODULAR ELEVATOR INC.
 912 SOUTH 19TH ST. MT. VERNON, ILLINOIS 62864
 PHONE: (618)-244-2314 FAX: (618)-244-1923
 E-mail: info@phoenixmodularelevator.com
 Web page: www.phoenixmodularelevator.com

HOISTWAY & CAR PLAN - 1HR FIRE RATED HOISTWAY

SIZE A	REV	REV. DATE	FILE NO.
SCALE: 1/2"=1'-0"		DATE: 2/14/08 T.H.	DWG NO. SLFR-1HR

DRAWINGS ARE FOR REFERENCE USE ONLY AND ARE NOT INTENDED FOR PURPOSES OF CONSTRUCTION.

D.B.G. = Distance between guide rails.
O/O = Out to out
W/ = with



AC4000 IS ONLY AVAILABLE WITH A HOLED JACK.

**STRETCHER COMPLIANT
ADA COMPLIANT**

**RIGHT HAND EXIT SHOWN - LEFT HAND EXIT OPPOSITE
TWO HOUR SHAFT RATING**

MEETS IBC 2006 SECTION 3002.4
Designed for 24"x84" ambulance
stretcher / gurney

Issue Date: 6/24/10

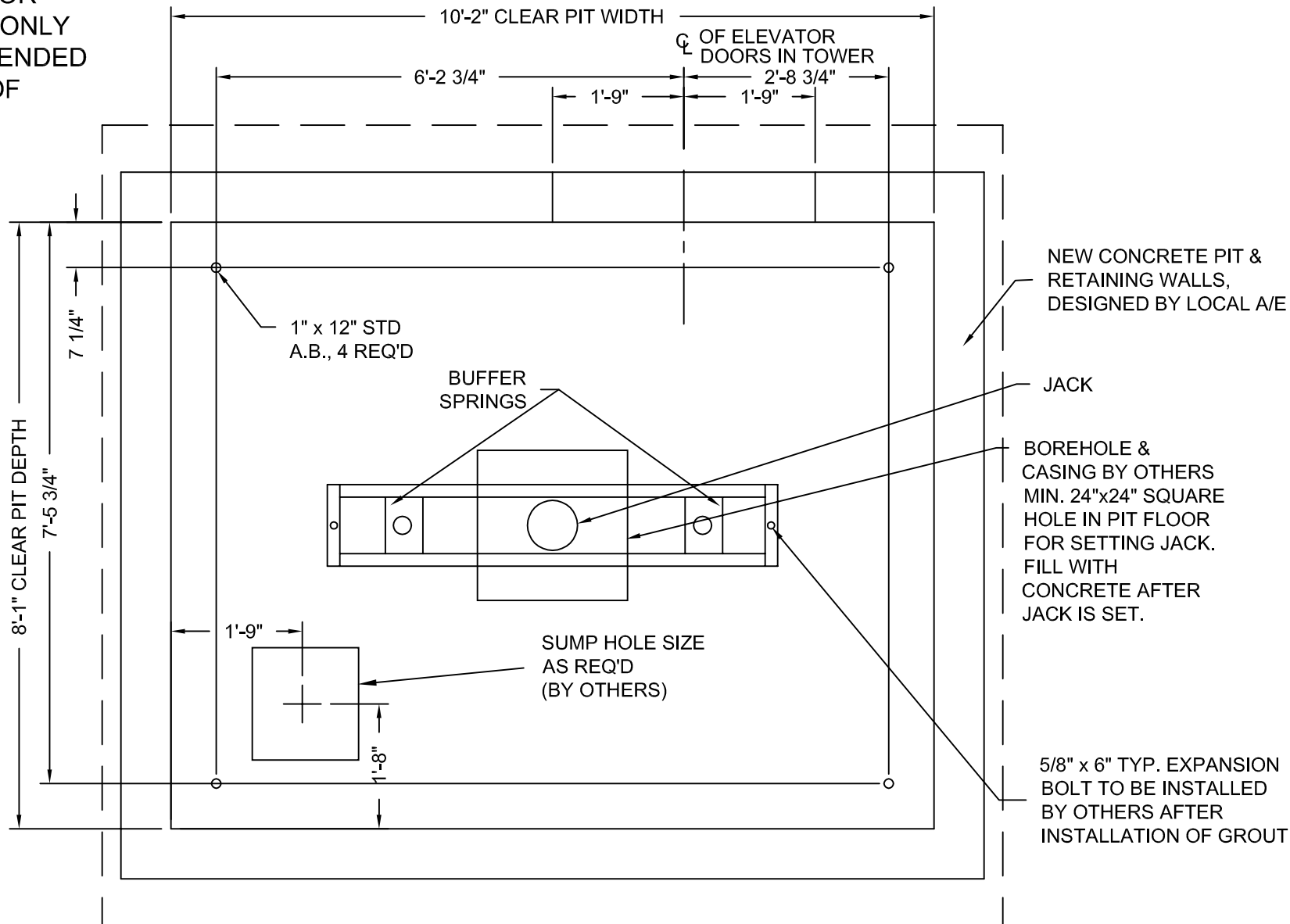


PHOENIX MODULAR ELEVATOR INC.
912 SOUTH 19TH ST. MT. VERNON, ILLINOIS 62864
PHONE: (618)-244-2314 FAX: (618)-244-1923
E-mail: info@phoenixmodularelevator.com
Web page: www.phoenixmodularelevator.com

HOISTWAY & CAR PLAN - 2HR FIRE RATED HOISTWAY

SIZE A	REV	REV. DATE	FILE NO.
SCALE: 1/2"=1'-0"		DATE: 2/14/08 T.H.	DWG NO. SLFR-2HR

DRAWINGS ARE FOR
REFERENCE USE ONLY
AND ARE NOT INTENDED
FOR PURPOSES OF
CONSTRUCTION.



MODEL: AC3000/AC4000 SLF / SLFR
RIGHT HAND EXIT SHOWN - LEFT HAND EXIT OPPOSITE

Issue Date: 6/24/10

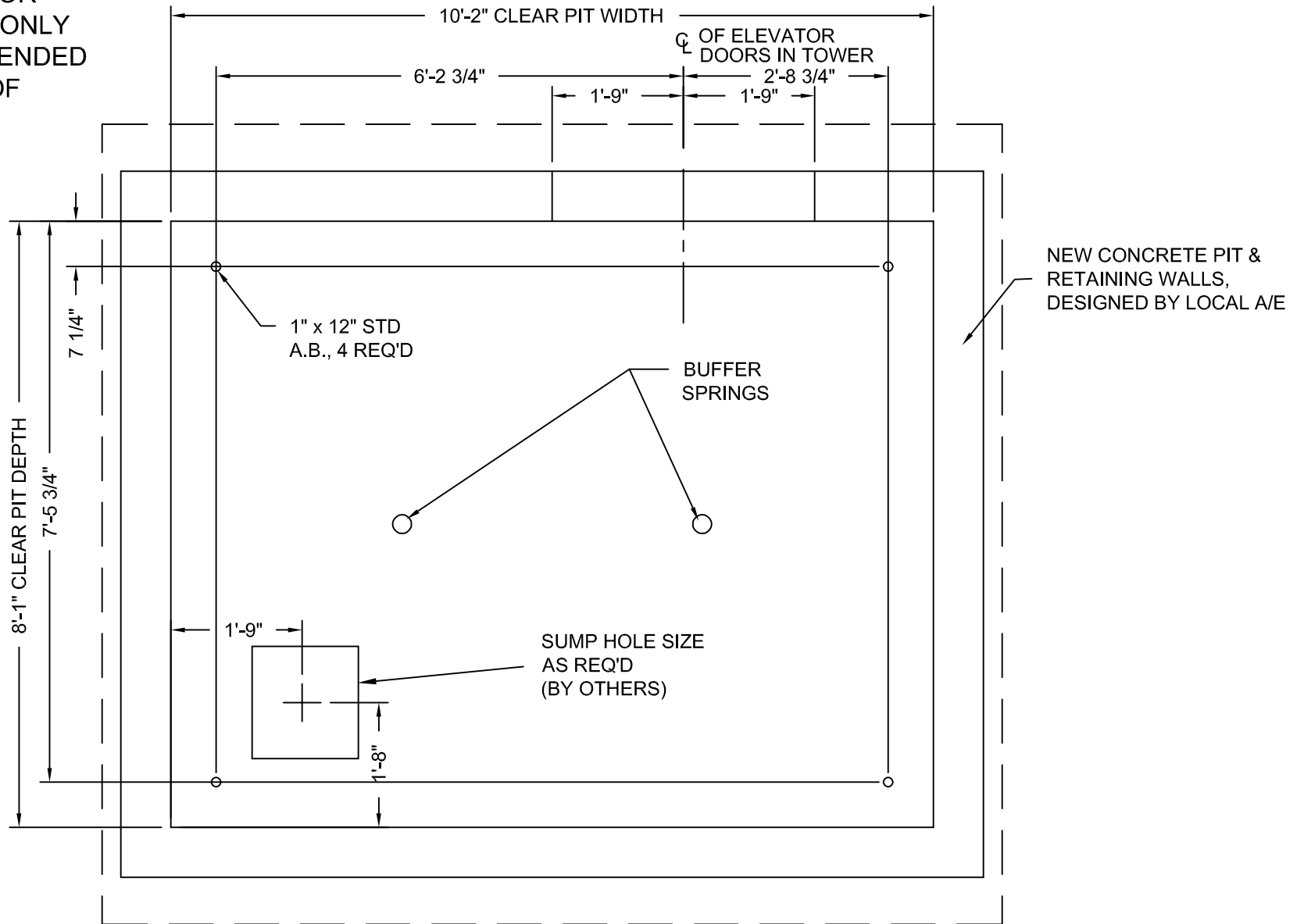


PHOENIX MODULAR ELEVATOR INC.
912 SOUTH 19TH ST. MT. VERNON, ILLINOIS 62864
PHONE: (618)-244-2314 FAX: (618)-244-1923
E-mail: info@phoenixmodularelevator.com
Web page: www.phoenixmodularelevator.com

MODEL SLF / SLFR PIT PLAN - HOLED JACK

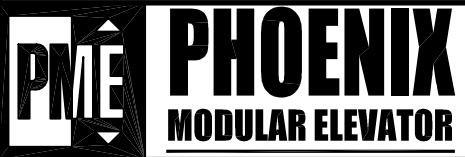
SIZE A	REV	REV. DATE	FILE NO.
SCALE: 1/2"=1'-0"		DATE: 2/14/08 T.H.	DWG NO. SLX-P1

DRAWINGS ARE FOR REFERENCE USE ONLY AND ARE NOT INTENDED FOR PURPOSES OF CONSTRUCTION.



MODEL: AC3000 SLF / SLFR
 RIGHT HAND EXIT SHOWN - LEFT HAND EXIT OPPOSITE

Issue Date: 6/24/10



PHOENIX MODULAR ELEVATOR INC.
 912 SOUTH 19TH ST. MT. VERNON, ILLINOIS 62864
 PHONE: (618)-244-2314 FAX: (618)-244-1923
 E-mail: info@phoenixmodularelevator.com
 Web page: www.phoenixmodularelevator.com

MODEL SLF / SLFR PIT PLAN - HOLELESS JACK			
SIZE A	REV	REV. DATE	FILE NO.
SCALE: 1/2"=1'-0"		DATE: 2/14/08 T.H.	DWG NO. SLX-P2