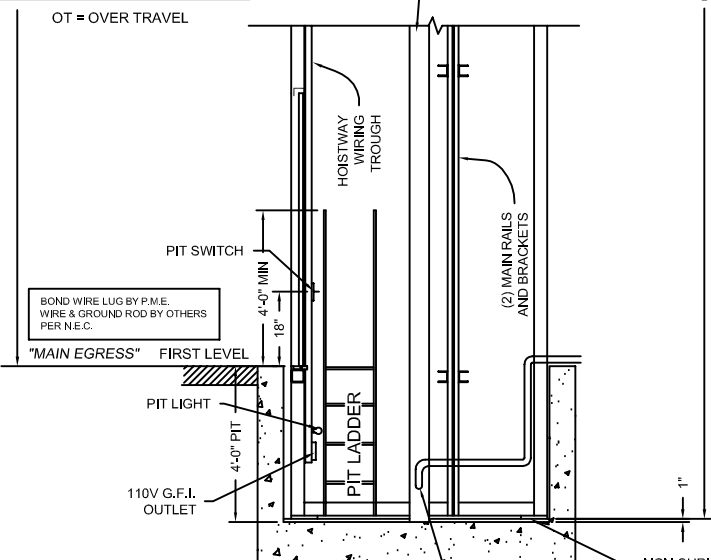


FLOOR TO FLOOR TRAVEL

4-5	
3-4	
2-3	
1-2	VARIES
NET TRAVEL	VARIES
TOP OT	VARIES
BOTTOM OT	9-1/2"
TOTAL TRAVEL	VARIES

(2) SINGLE STROKE, TWIN JACKS
 PISTON LENGTH = to be determined
 CYLINDER LENGTH = to be determined
 CLEARANCE PROVIDED BETWEEN PISTON & CYLINDER WHEN CAR IS ON COMPRESSED SPRINGS IS 1"



SECTION VIEW

NOT TO SCALE

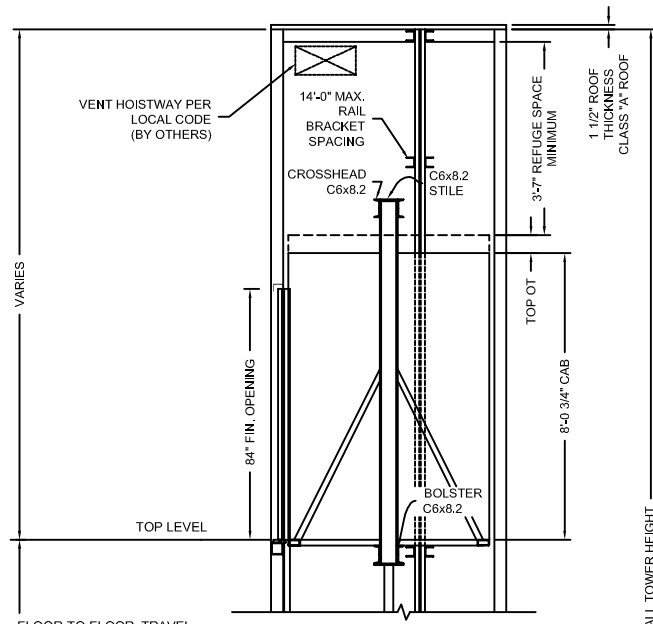
The section view is for informational / dimensional data. See the hoistway plan view for actual equipment locations.

Issue Date: 6/29/10



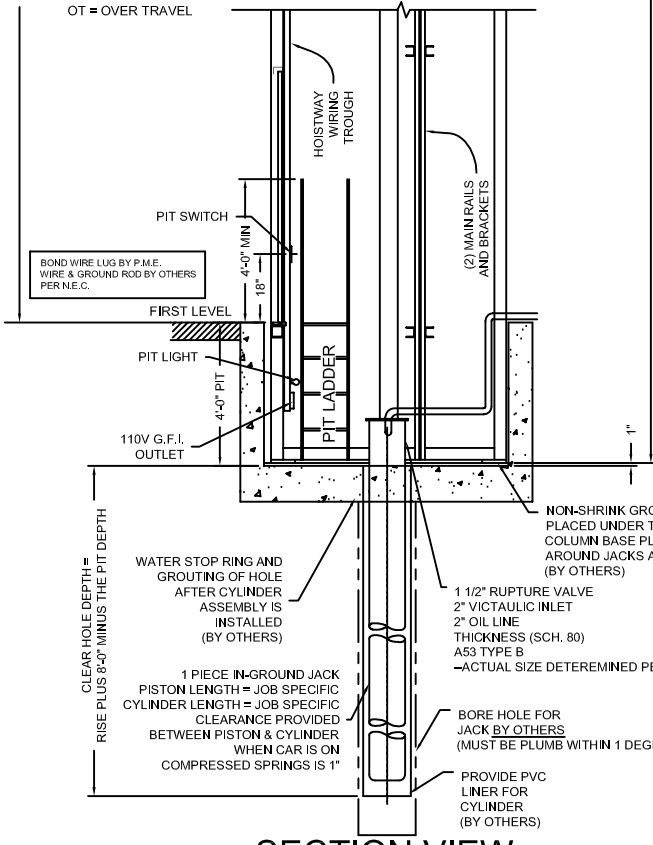
PHOENIX MODULAR ELEVATOR INC.
 912 SOUTH 19TH ST. MT. VERNON, ILLINOIS 62864
 PHONE: (618)-244-2314 FAX: (618)-244-1923
 E-mail: info@phoenixmodularelevator.com
 Web page: www.phoenixmodularelevator.com

SECTION VIEW FOR HOLELESS JACK SYSTEM			
SIZE A	REV	REV. DATE	FILE NO.
SCALE: N.T.S.	DATE: 1/5/05 T.H.	DWG NO.	SV-TJ/TTJ



FLOOR TO FLOOR TRAVEL

3-4	VARIES
2-3	VARIES
1-2	VARIES
NET TRAVEL	VARIES
TOP OT	6" MIN
BOTTOM OT	9-1/2"
TOTAL TRAVEL	VARIES



SECTION VIEW
NOT TO SCALE

The section view is for informational data. See the hoistway plan view for proper equipment locations.

Issue Date: 6/29/10

PHOENIX MODULAR ELEVATOR INC.
 912 SOUTH 19TH ST. MT. VERNON, ILLINOIS 62864
 PHONE: (618)-244-2314 FAX: (618)-244-1923
 E-mail: info@phoenixmodularelevator.com
 Web page: www.phoenixmodularelevator.com

SECTION VIEW FOR HOLED JACK SYSTEM			
SIZE A	REV	REV. DATE	FILE NO.
SCALE: N.T.S.	DATE: 1/5/05	DWG NO.	SV-BH