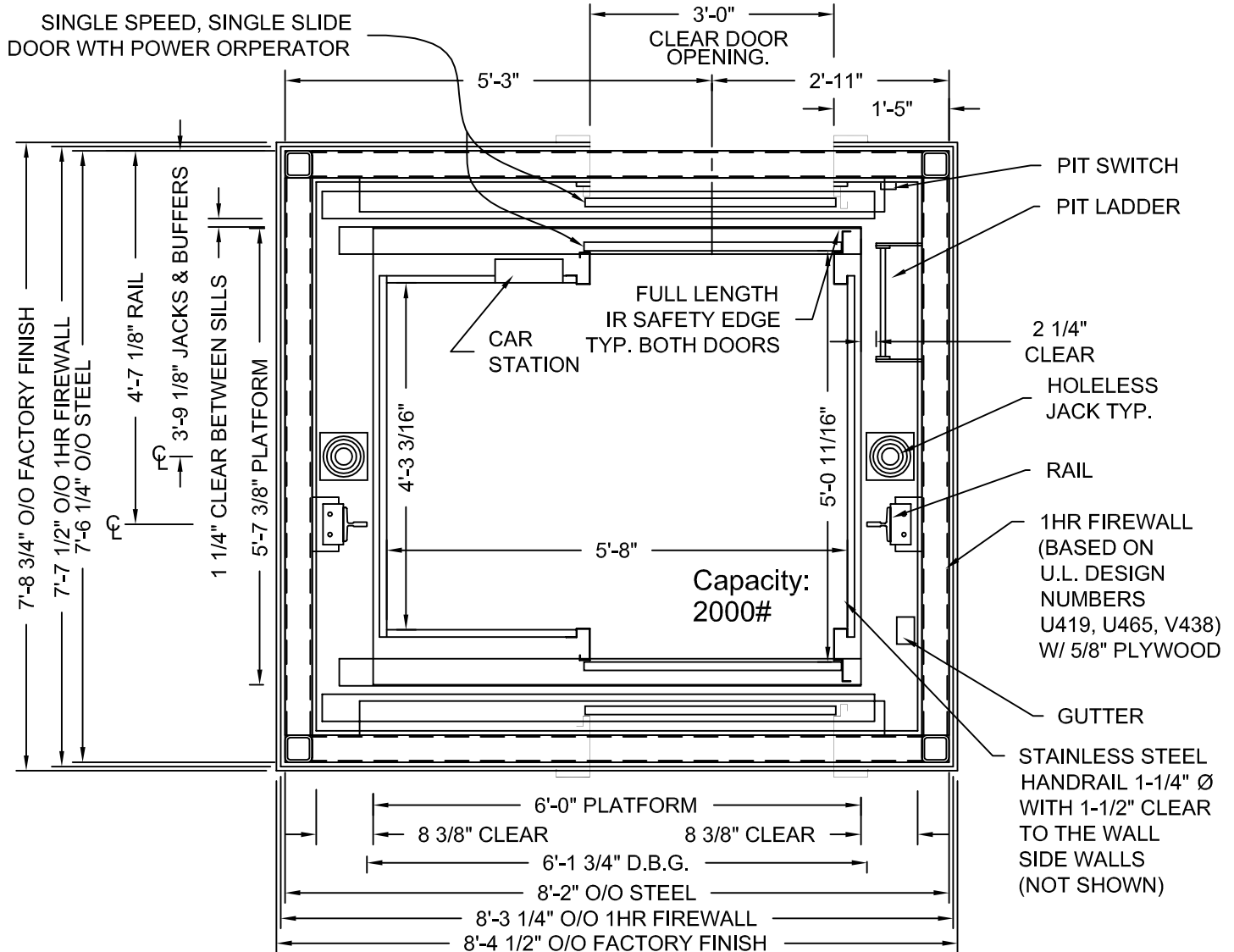


DRAWINGS ARE FOR REFERENCE USE ONLY AND ARE NOT INTENDED FOR PURPOSES OF CONSTRUCTION.

D.B.G. = Distance between guide rails.  
O/O = Out to out  
W/ = with



HOLELESS JACK SYSTEM SHOWN, IN-GROUND JACK SYSTEM AVAILABLE

MODEL: AC3000/AC4000 WFR  
RIGHT HAND EXIT SHOWN - LEFT HAND EXIT OPPOSITE

ONE HOUR SHAFT RATING

ADA COMPLIANT

Issue Date: 6/24/10



**PHOENIX MODULAR ELEVATOR INC.**  
912 SOUTH 19TH ST. MT. VERNON, ILLINOIS 62864  
PHONE: (618)-244-2314 FAX: (618)-244-1923  
E-mail: info@phoenixmodularelevator.com  
Web page: www.phoenixmodularelevator.com

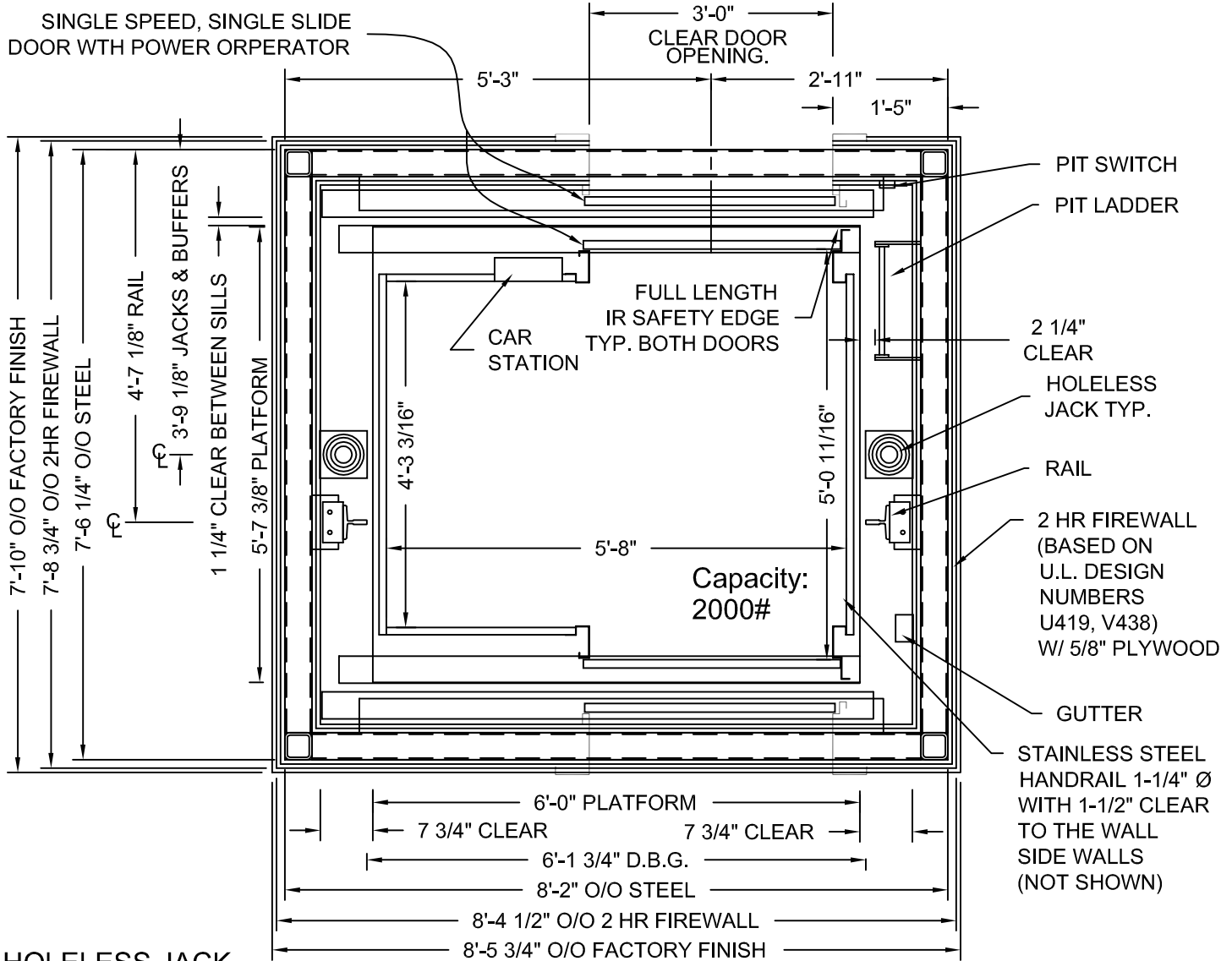
HOISTWAY & CAR PLAN - 1HR FIRE RATED HOISTWAY

SIZE A	REV	REV. DATE	FILE NO.
SCALE: 1/2"=1'-0"	DATE: 12/10/04 T.H.	DWG NO.	WFR-1HR

DRAWINGS ARE FOR REFERENCE USE ONLY AND ARE NOT INTENDED FOR PURPOSES OF CONSTRUCTION.

NET INSIDE CAB AREA - 24.17 SQ FT

D.B.G. = Distance between guide rails.  
O/O = Out to out  
W/ = with



HOLELESS JACK SYSTEM SHOWN, HOLED JACK SYSTEM AVAILABLE

MODEL: AC3000/AC4000 WFR

RIGHT HAND EXIT SHOWN - LEFT HAND EXIT OPPOSITE

ADA COMPLIANT

TWO HOUR SHAFT RATING

Issue Date: 6/24/10

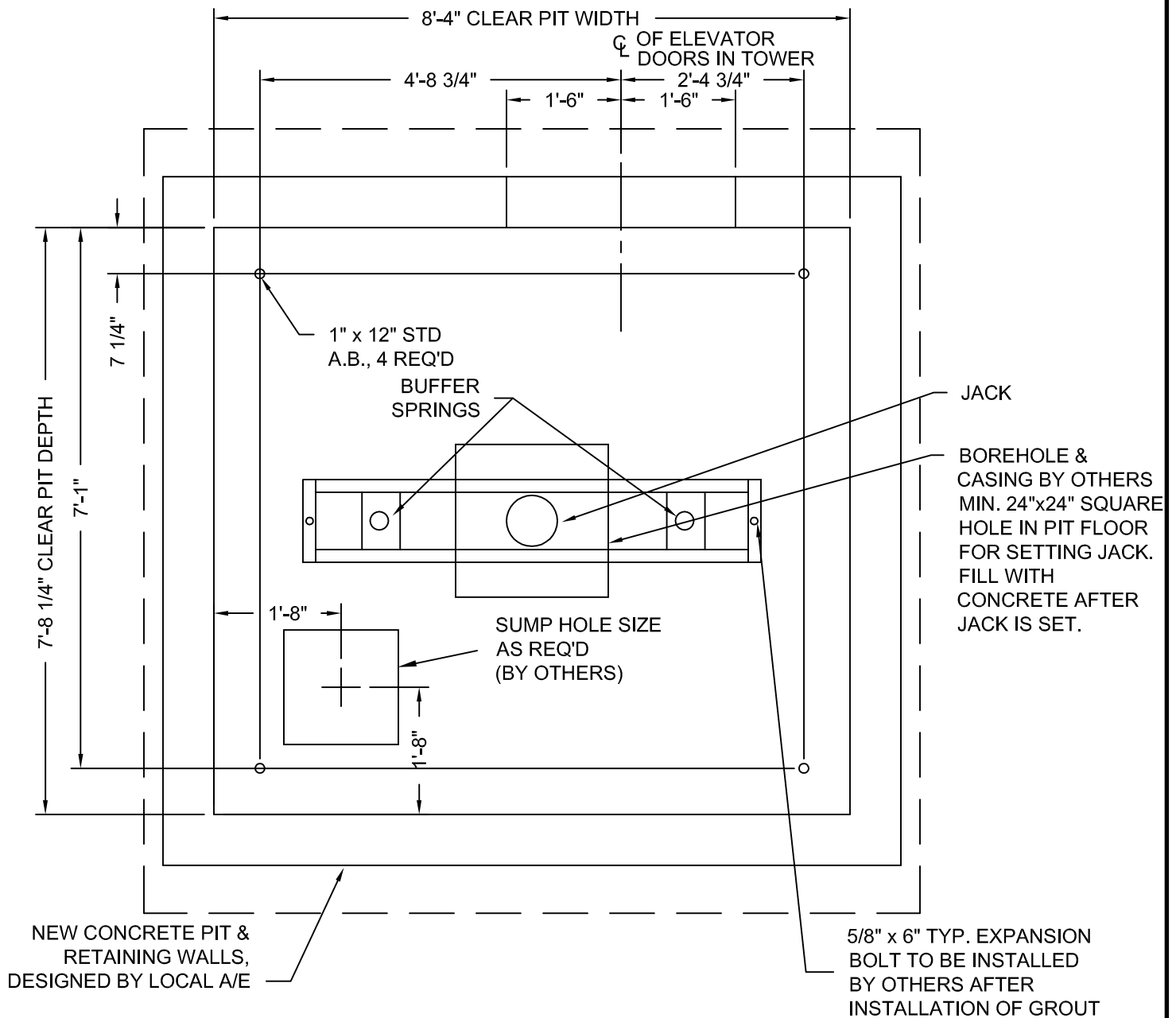


**PHOENIX MODULAR ELEVATOR INC.**  
912 SOUTH 19TH ST. MT. VERNON, ILLINOIS 62864  
PHONE: (618)-244-2314 FAX: (618)-244-1923  
E-mail: info@phoenixmodularelevator.com  
Web page: www.phoenixmodularelevator.com

HOISTWAY & CAR PLAN - 2HR FIRE RATED HOISTWAY

SIZE A	REV	REV. DATE	FILE NO.
SCALE: 1/2"=1'-0"	DATE: 12/10/04 T.H.	DWG NO.	WFR-2HR

DRAWINGS ARE FOR  
 REFERENCE USE ONLY  
 AND ARE NOT INTENDED  
 FOR PURPOSES OF  
 CONSTRUCTION.



MODEL: AC3000/AC4000 WF / WFR  
 RIGHT HAND EXIT SHOWN - LEFT HAND EXIT OPPOSITE

Issue Date: 6/24/10

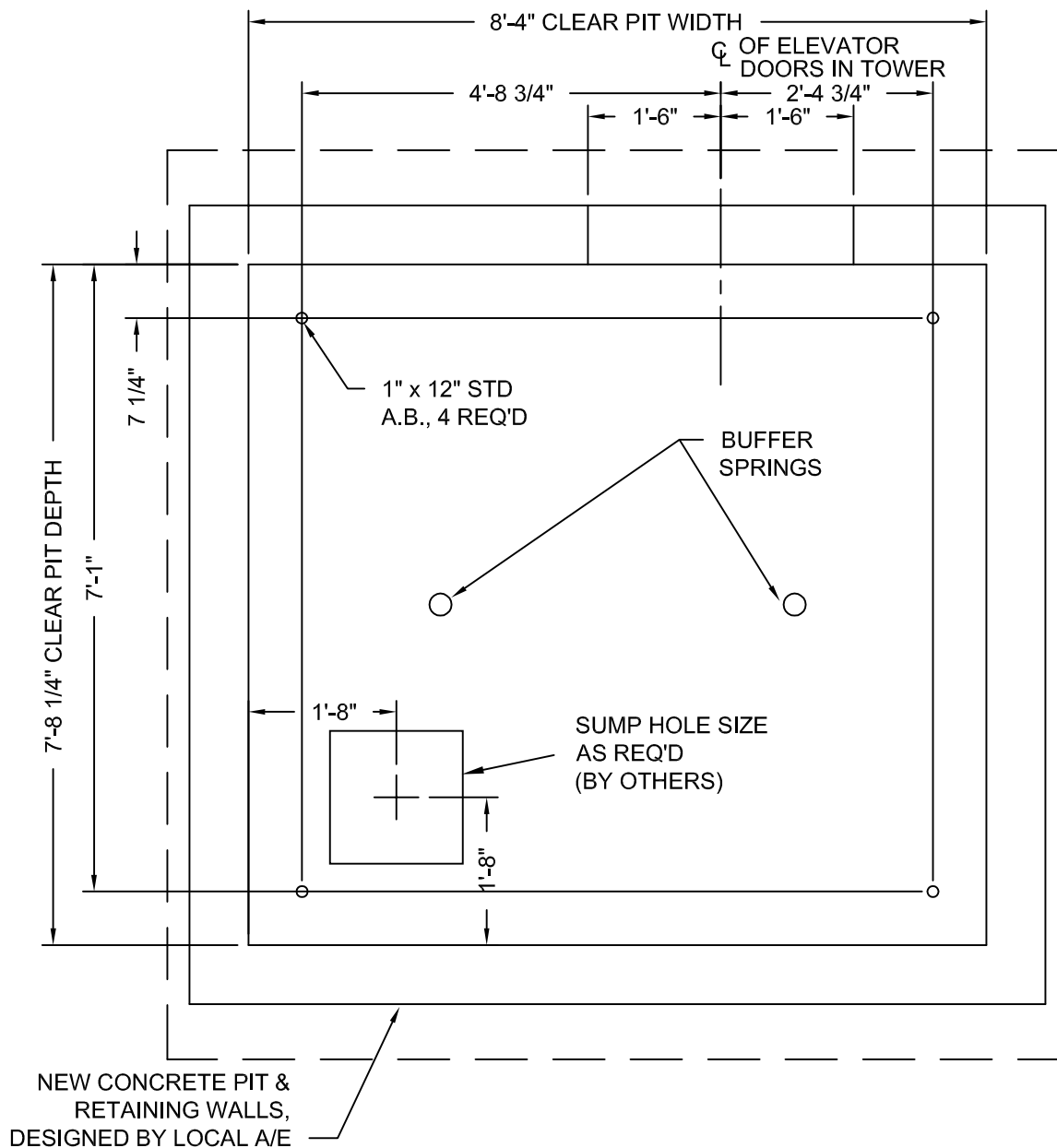


**PHOENIX MODULAR ELEVATOR INC.**  
 912 SOUTH 19TH ST. MT. VERNON, ILLINOIS 62864  
 PHONE: (618)-244-2314 FAX: (618)-244-1923  
 E-mail: info@phoenixmodularelevator.com  
 Web page: www.phoenixmodularelevator.com

TYPICAL MODEL WF / WFR PIT PLAN - HOLED JACK

SIZE A	REV	REV. DATE	FILE NO.
SCALE: 1/2"=1'-0"	DATE: 12/10/04 T.H.	DWG NO.	WX-P1

DRAWINGS ARE FOR  
 REFERENCE USE ONLY  
 AND ARE NOT INTENDED  
 FOR PURPOSES OF  
 CONSTRUCTION.



MODEL: AC3000 WF / WFR  
 RIGHT HAND EXIT SHOWN - LEFT HAND EXIT OPPOSITE

AC4000 TYPICALLY USES HOLED  
 JACK. ONLY UNDER CERTAIN  
 CIRCUMSTANCES CAN HOLELESS  
 JACKS BE USED.

Issue Date: 6/24/10



**PHOENIX MODULAR ELEVATOR INC.**  
 912 SOUTH 19TH ST. MT. VERNON, ILLINOIS 62864  
 PHONE: (618)-244-2314 FAX: (618)-244-1923  
 E-mail: info@phoenixmodularelevator.com  
 Web page: www.phoenixmodularelevator.com

MODEL WF / WFR PIT PLAN - HOLELESS JACKS

SIZE A	REV	REV. DATE	FILE NO.
SCALE: 1/2"=1'-0"	DATE: 12/10/04 T.H.	DWG NO. WX-P2	