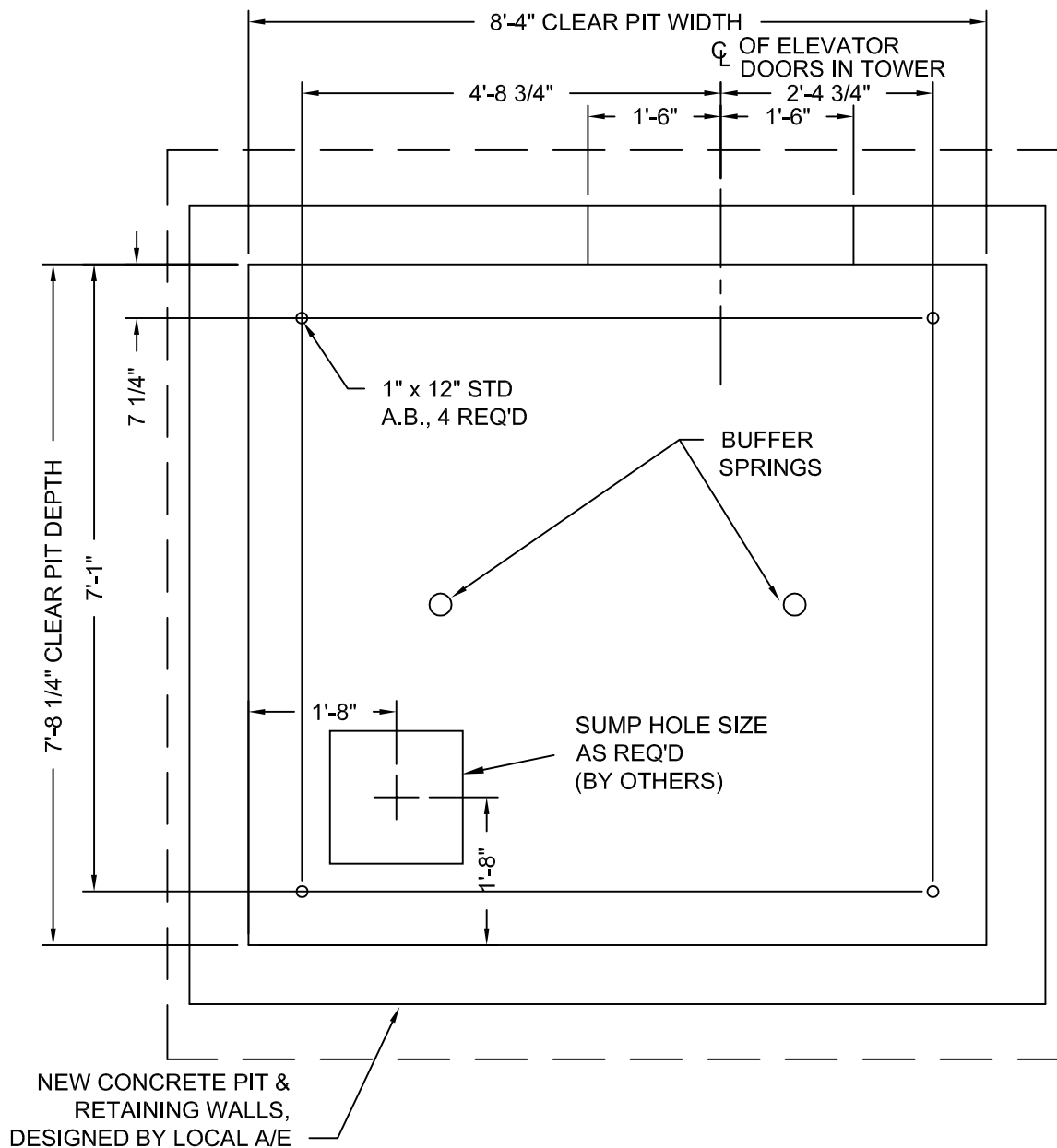


DRAWINGS ARE FOR  
 REFERENCE USE ONLY  
 AND ARE NOT INTENDED  
 FOR PURPOSES OF  
 CONSTRUCTION.



MODEL: AC3000 WF / WFR  
 RIGHT HAND EXIT SHOWN - LEFT HAND EXIT OPPOSITE

AC4000 TYPICALLY USES HOLED JACK. ONLY UNDER CERTAIN CIRCUMSTANCES CAN HOLELESS JACKS BE USED.

Issue Date: 6/24/10



**PHOENIX MODULAR ELEVATOR INC.**  
 912 SOUTH 19TH ST. MT. VERNON, ILLINOIS 62864  
 PHONE: (618)-244-2314 FAX: (618)-244-1923  
 E-mail: info@phoenixmodularelevator.com  
 Web page: www.phoenixmodularelevator.com

MODEL WF / WFR PIT PLAN - HOLELESS JACKS

SIZE A	REV	REV. DATE	FILE NO.
SCALE: 1/2"=1'-0"	DATE: 12/10/04 T.H.	DWG NO. WX-P2	