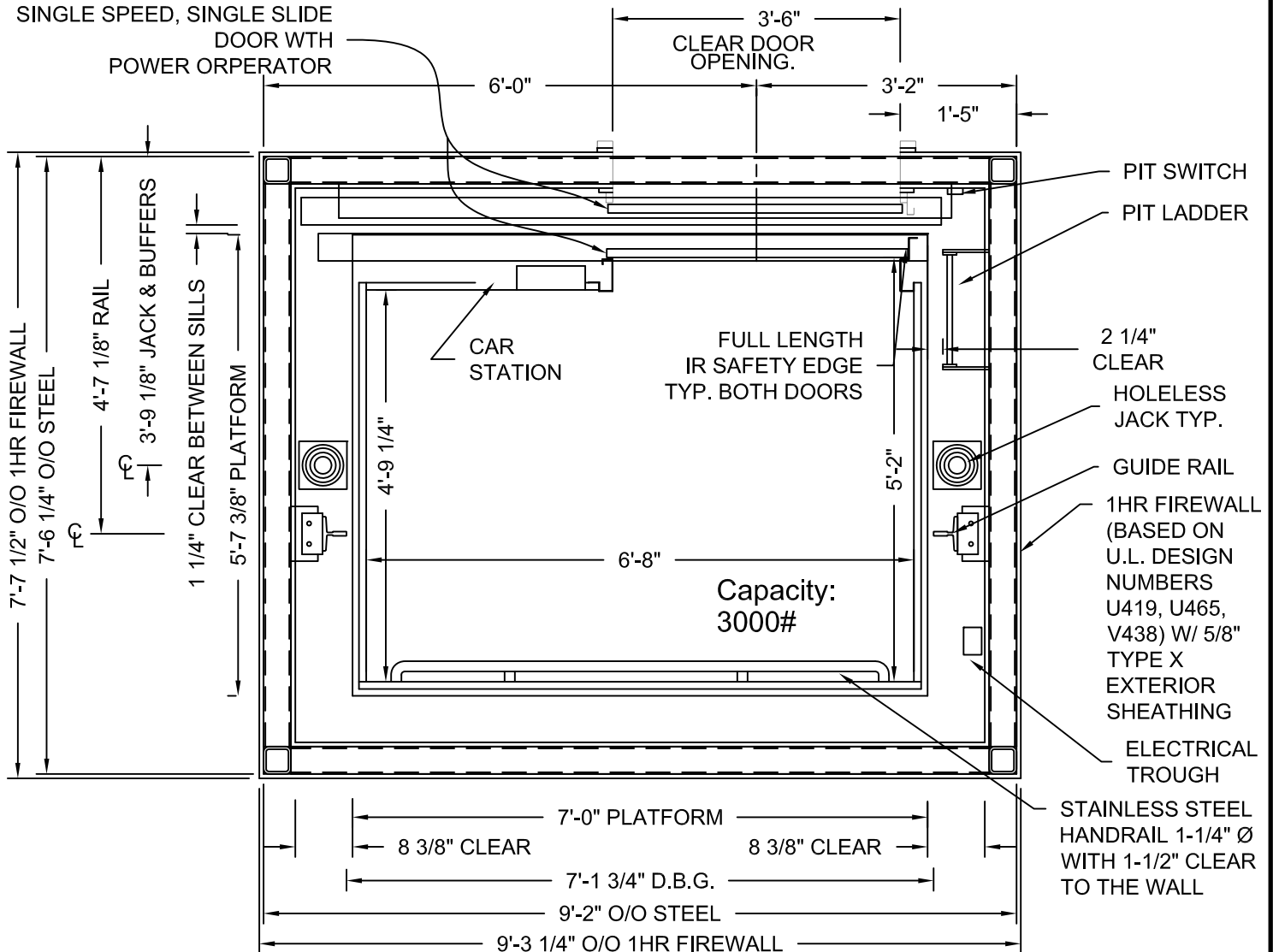


DRAWINGS ARE
FOR REFERENCE
USE ONLY AND ARE
NOT INTENDED FOR
PURPOSES OF
CONSTRUCTION.

D.B.G. = Distance between guide rails.
O/O = Out to out
W/ = with

SIDE HANDRAILS
(NOT SHOWN)
OPTIONAL



MODEL: AC3000/AC4000 SF
RIGHT HAND EXIT SHOWN - LEFT HAND EXIT OPPOSITE
ONE HOUR SHAFT RATING

STRETCHER COMPLIANCE MEETS IBC 2003,
SECTION 3002.4
(NOT COMPLIANT WITH 2006 OR NEW CODES)

ADA COMPLIANT

HOLELESS JACK
SYSTEM SHOWN,
HOLED JACK SYSTEM
AVAILABLE

Issue Date:



PHOENIX MODULAR ELEVATOR INC.

912 SOUTH 19TH ST. MT. VERNON, ILLINOIS 62864

PHONE: (618)-244-2314 FAX: (618)-244-1923

E-mail: Info@phoenixmodularelevator.com

Web page: www.phoenixmodularelevator.com

HOISTWAY & CAR PLAN - 1HR FIRE RATED HOISTWAY

SIZE	REV	REV. DATE	FILE NO.
A			
SCALE:	1/2"=1'-0"		DATE:
		DWG NO.	SF-1HR

DRAWINGS ARE
FOR REFERENCE
USE ONLY AND ARE
NOT INTENDED FOR
PURPOSES OF
CONSTRUCTION.

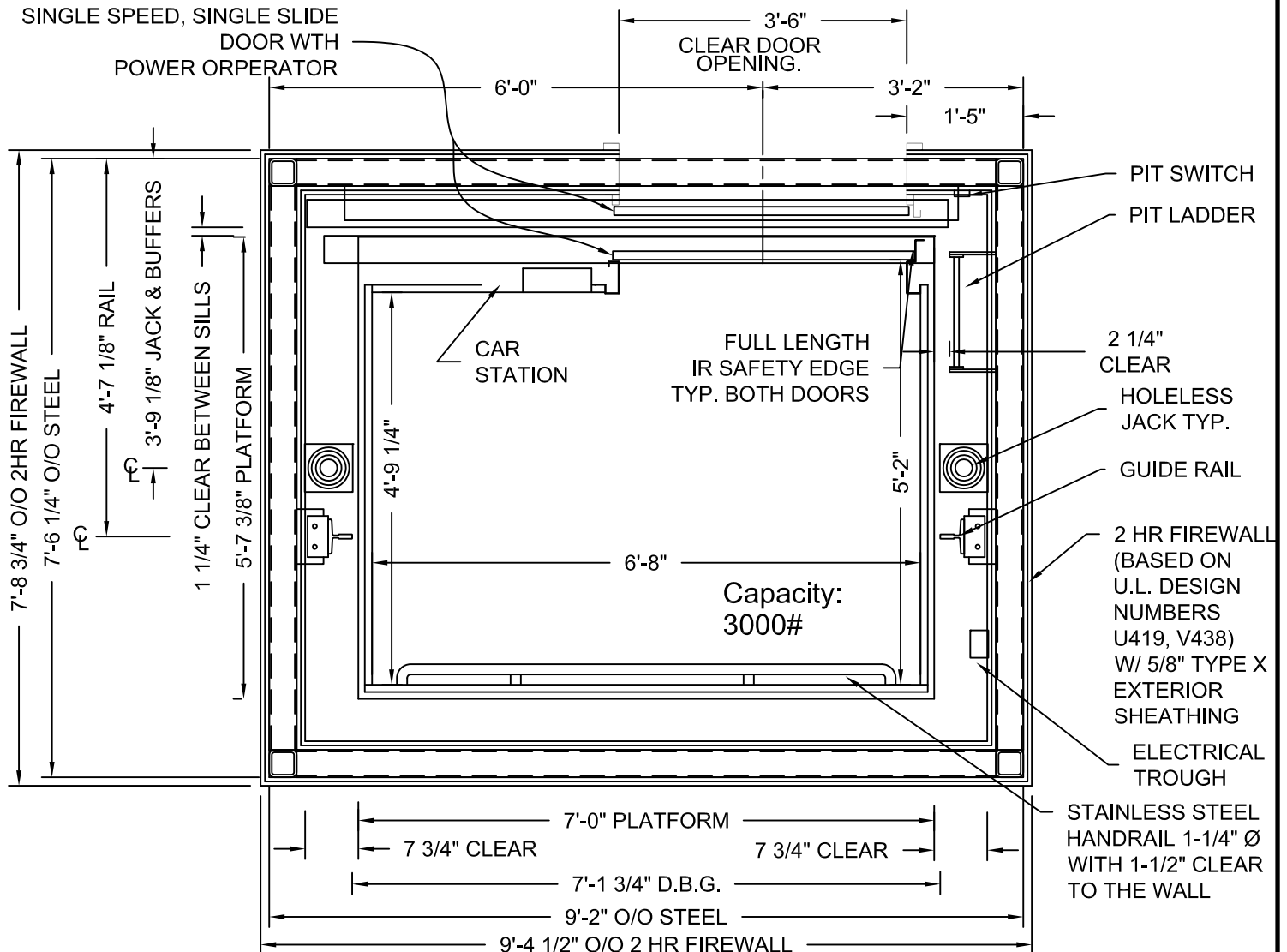
NET INSIDE CAB AREA - 31.81 SQ FT

D.B.G. = Distance between guide rails.

O/O = Out to out

W/ = with

SIDE HANDRAILS
(NOT SHOWN)
OPTIONAL



MODEL: AC3000/AC4000 SF
RIGHT HAND EXIT SHOWN - LEFT HAND EXIT OPPOSITE
TWO HOUR SHAFT RATING

STRETCHER COMPLIANCE MEETS IBC 2003,
SECTION 3002.4
(NOT COMPLIANT WITH 2006 OR NEW CODES)

ADA COMPLIANT

HOLELESS JACK
SYSTEM SHOWN,
HOLED JACK SYSTEM
AVAILABLE

Issue Date:



PHOENIX MODULAR ELEVATOR INC.

912 SOUTH 19TH ST. MT. VERNON, ILLINOIS 62864

PHONE: (618)-244-2314 FAX: (618)-244-1923

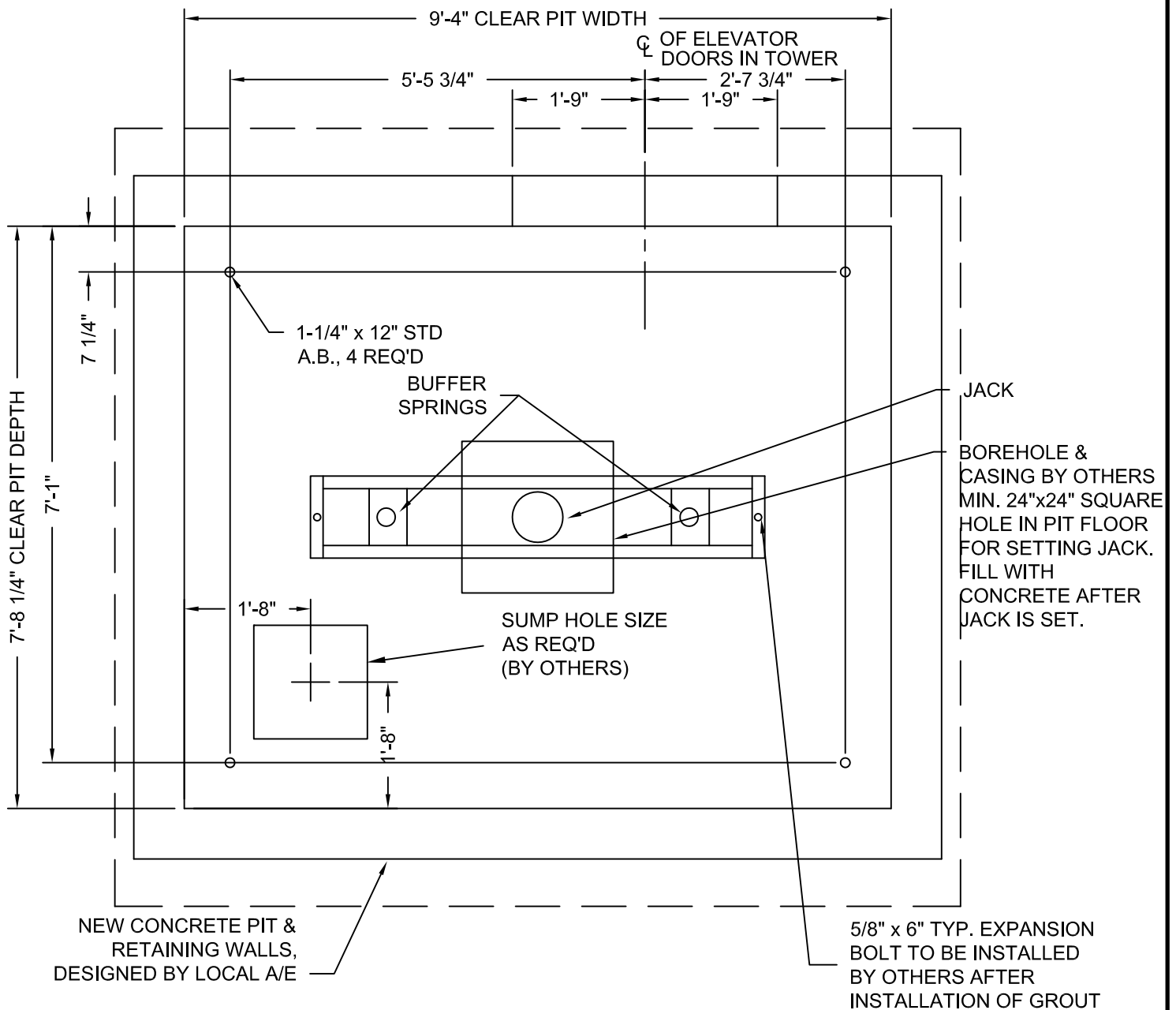
E-mail: Info@phoenixmoduleleviator.com

Web page: www.phoenixmoduleleviator.com

HOISTWAY & CAR PLAN - 2HR FIRE RATED HOISTWAY

SIZE	REV	REV. DATE	FILE NO.
A			
SCALE:	1/2"=1'-0"		DATE:
		DWG NO.	SF-2HR

DRAWINGS ARE FOR
REFERENCE USE ONLY AND
ARE NOT INTENDED FOR
PURPOSES OF
CONSTRUCTION.



MODEL: AC3000/AC4000 SF / SFR
RIGHT HAND EXIT SHOWN - LEFT HAND EXIT OPPOSITE

Issue Date:



PHOENIX MODULAR ELEVATOR INC.

912 SOUTH 19TH ST. MT. VERNON, ILLINOIS 62864

PHONE: (618)-244-2314 FAX: (618)-244-1923

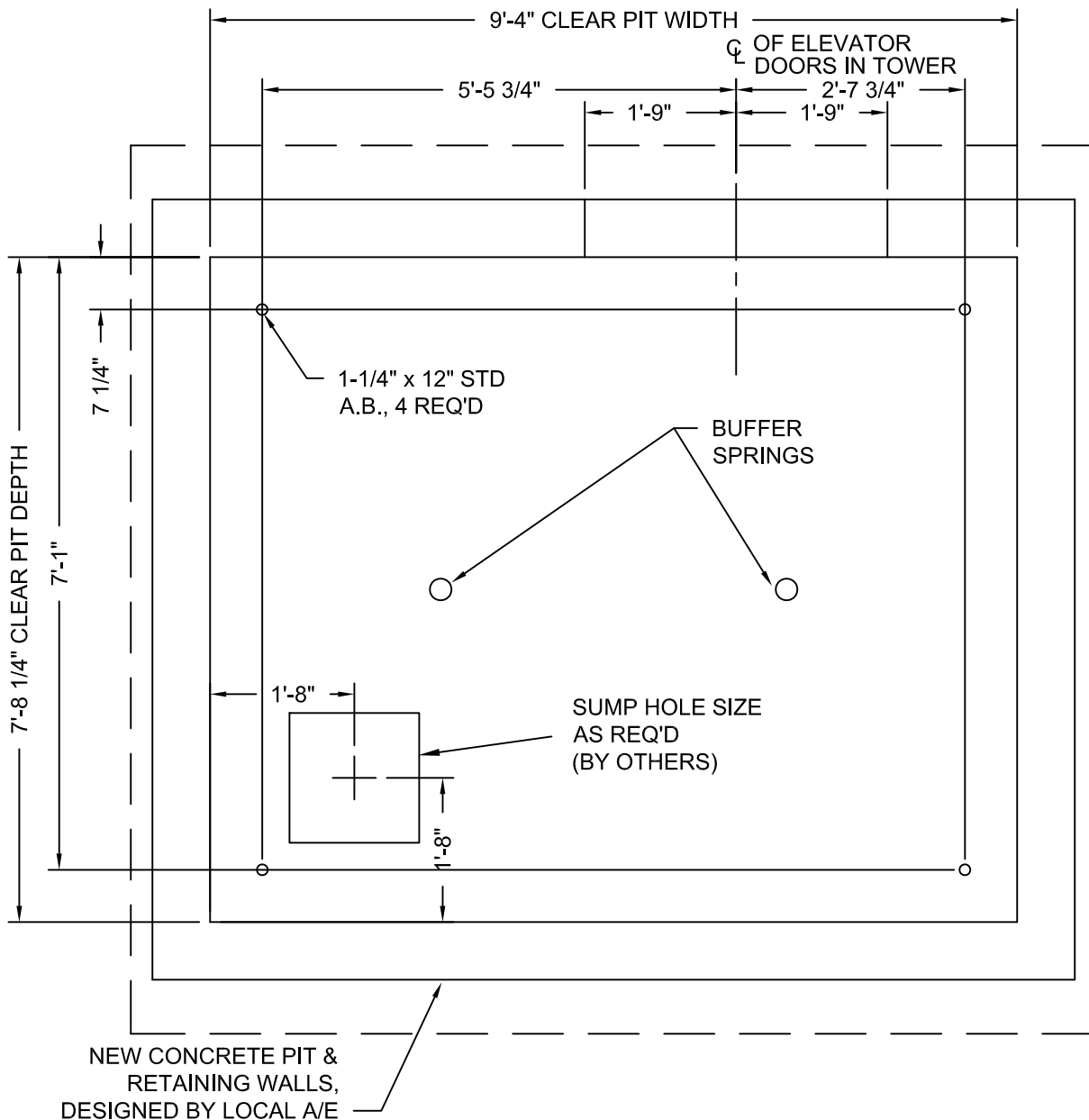
E-mail: Info@phoenixmodularelevator.com

Web page: www.phoenixmodularelevator.com

TYPICAL MODEL SF / SFR PIT PLAN - HOLED JACK

SIZE A	REV	REV. DATE	FILE NO.
SCALE: 1/2"=1'-0"	DATE:	DWG NO.	SX-P1

DRAWINGS ARE FOR
REFERENCE USE ONLY AND
ARE NOT INTENDED FOR
PURPOSES OF
CONSTRUCTION.



MODEL: AC3000 SF / SFR
RIGHT HAND EXIT SHOWN - LEFT HAND EXIT OPPOSITE

AC4000 TYPICALLY USES HOLED
JACK. ONLY UNDER CERTAIN
CIRCUMSTANCES CAN HOLELESS
JACKS BE USED.

Issue Date:



PHOENIX MODULAR ELEVATOR INC.

912 SOUTH 19TH ST. MT. VERNON, ILLINOIS 62864

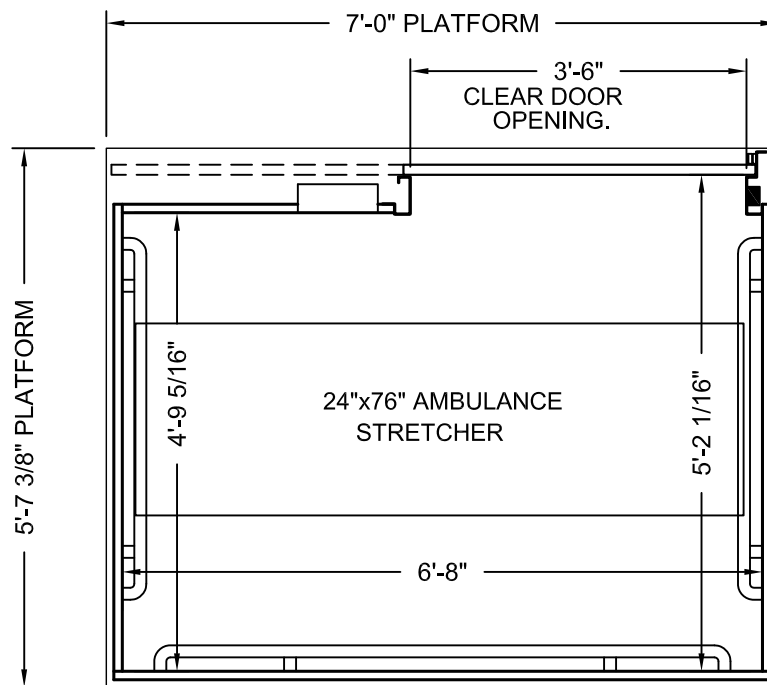
PHONE: (618)-244-2314 FAX: (618)-244-1923

E-mail: Info@phoenixmodularelevator.com

Web page: www.phoenixmodularelevator.com

MODEL SF / SFR PIT PLAN - HOLELESS JACKS

SIZE	REV	REV. DATE	FILE NO.
A			
SCALE:	1/2"=1'-0"		DATE:
		DWG NO.	SX-P2



PLAN VIEW

P.M.E.'s typical front standard stretcher size elevator car.
Capacity = 3000 lbs.

Car enclosure - laminate on wood
*All material for car enclosures meet the requirements of
ASME A17.1 RULE 2.14.2.1*

STRETCHER COMPLIANCE MEETS IBC 2003,
SECTION 3002.4
(NOT COMPLIANT WITH 2006 OR NEW CODES)

ADA COMPLIANT

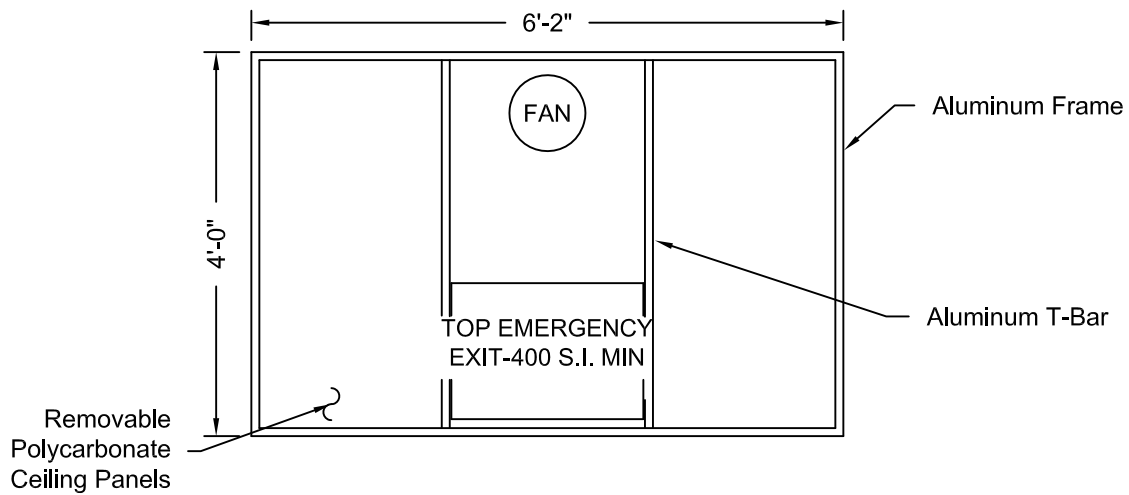
Issue Date:



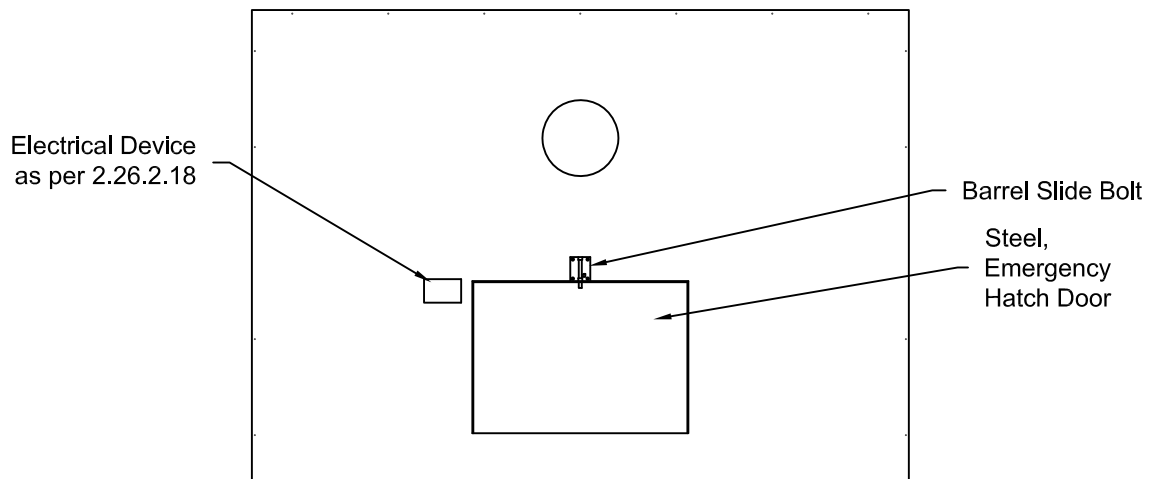
PHOENIX MODULAR ELEVATOR INC.
912 SOUTH 19TH ST. MT. VERNON, ILLINOIS 62864
PHONE: (618)-244-2314 FAX: (618)-244-1923
E-mail: info@phoenixmodulelevator.com
Web page: www.phoenixmodulelevator.com

FRONT EXIT ELEVATOR CAB

SIZE A	REV	REV. DATE	FILE NO.
SCALE: N.T.S.	DATE:	DWG NO.	CAB-SF



REFLECTIVE CEILING PLAN



ROOF PLAN VIEW EMERGENCY EXIT DOOR

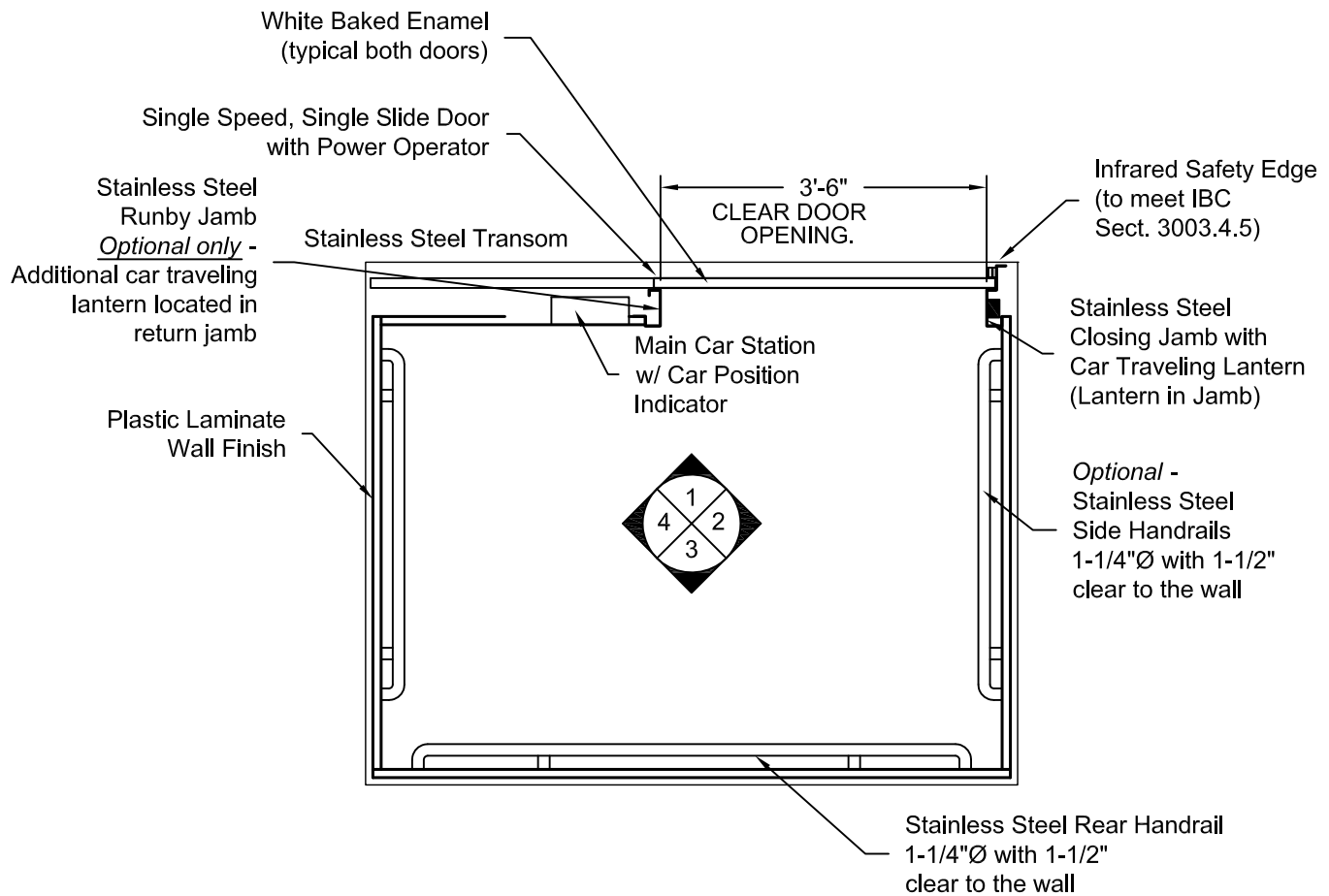
Issue Date:



PHOENIX MODULAR ELEVATOR INC.
 912 SOUTH 19TH ST. MT. VERNON, ILLINOIS 62864
 PHONE: (618)-244-2314 FAX: (618)-244-1923
 E-mail: info@phoenixmodulelevator.com
 Web page: www.phoenixmodulelevator.com

CEILING PLAN - front exit elevator car

SIZE A	REV	REV. DATE	FILE NO.
SCALE: N.T.S.	DATE:	DWG NO. CAB-SF-1	



PLAN VIEW
RIGHT FRONT DOOR
(MIRROR IMAGE IS AVAILABLE)

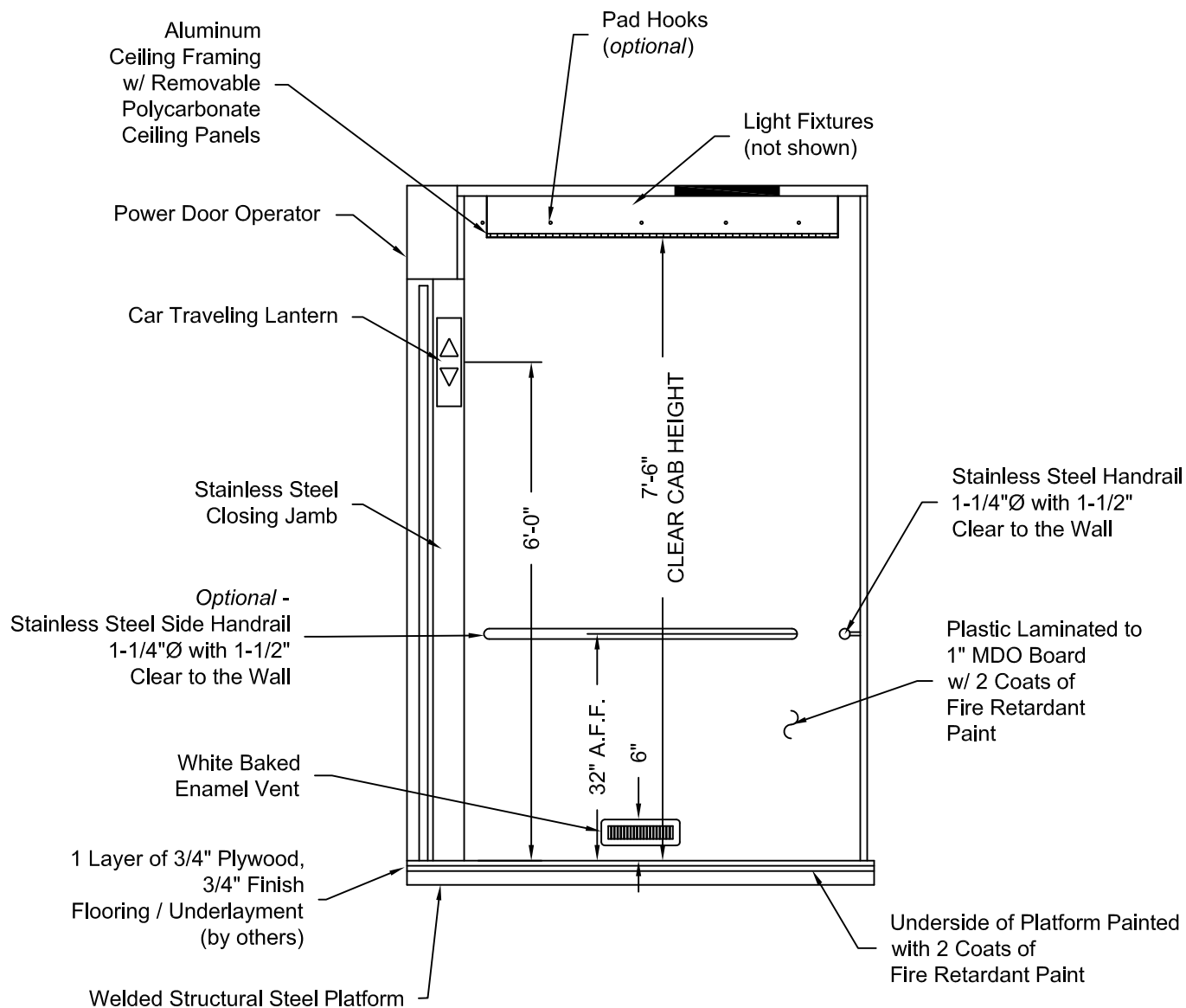
Issue Date:



PHOENIX MODULAR ELEVATOR INC.
912 SOUTH 19TH ST. MT. VERNON, ILLINOIS 62864
PHONE: (618)-244-2314 FAX: (618)-244-1923
E-mail: info@phoenixmodularelevator.com
Web page: www.phoenixmodularelevator.com

PLAN VIEW - front exit elevator

SIZE A	REV	REV. DATE	FILE NO.
SCALE: N.T.S.	DATE:	DWG NO.	CAB-SF-2



ELEVATION NO. 2

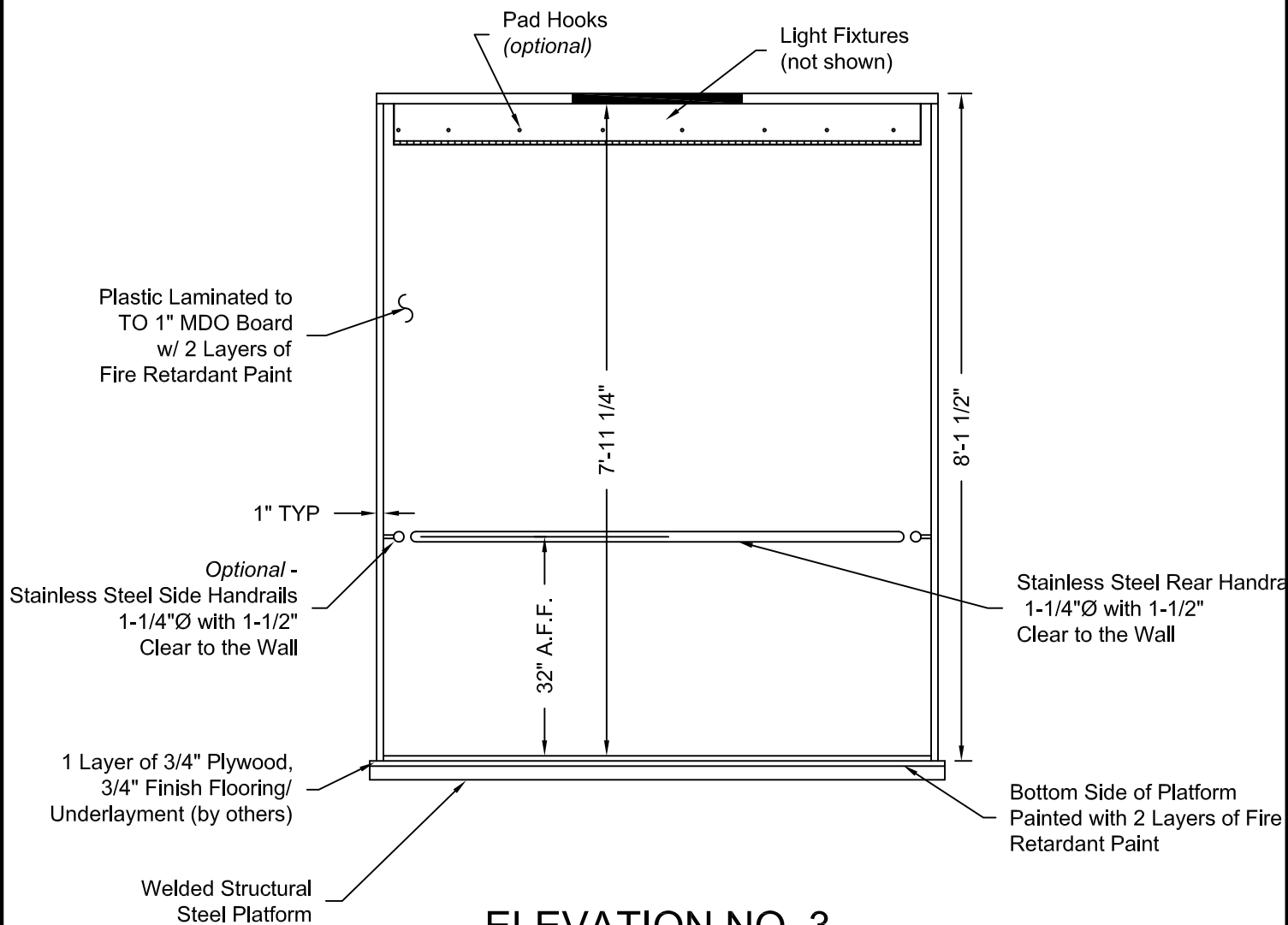
Issue Date:



PHOENIX MODULAR ELEVATOR INC.
 912 SOUTH 19TH ST. MT. VERNON, ILLINOIS 62864
 PHONE: (618)-244-2314 FAX: (618)-244-1923
 E-mail: info@phoenixmoduleleviator.com
 Web page: www.phoenixmoduleleviator.com

ELEVATION NO. 2 - front exit elevator car

SIZE A	REV	REV. DATE	FILE NO.
SCALE: N.T.S.	DATE:	DWG NO. CAB-SF-4	



ELEVATION NO. 3

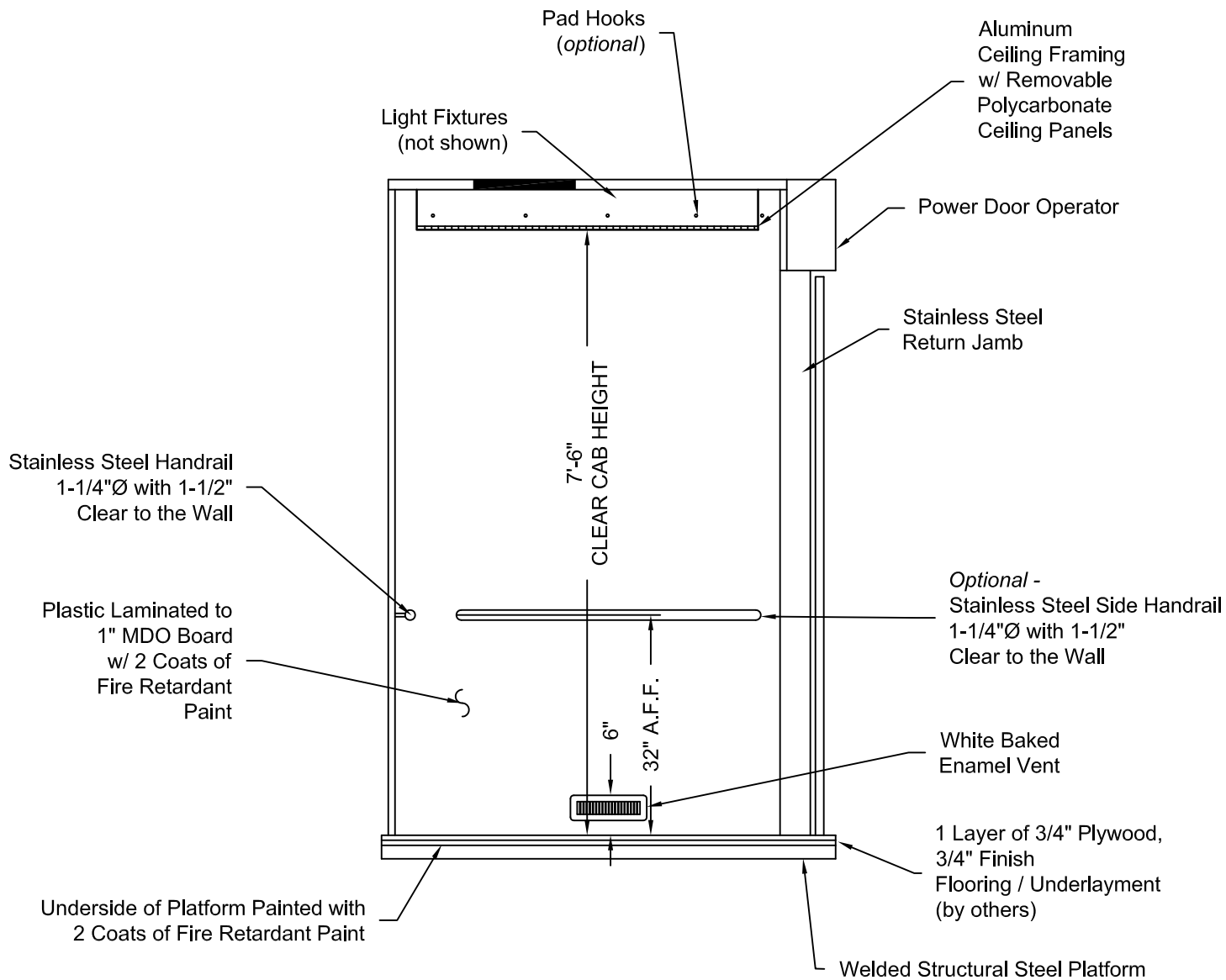
Issue Date:



PHOENIX MODULAR ELEVATOR INC.
 912 SOUTH 19TH ST. MT. VERNON, ILLINOIS 62864
 PHONE: (618)-244-2314 FAX: (618)-244-1923
 E-mail: info@phoenixmodulelevator.com
 Web page: www.phoenixmodulelevator.com

ELEVATION NO.3 - front exit elevator car

SIZE A	REV	REV. DATE	FILE NO.
SCALE: N.T.S.	DATE:	DWG NO. CAB-SF-5	



ELEVATION NO. 4

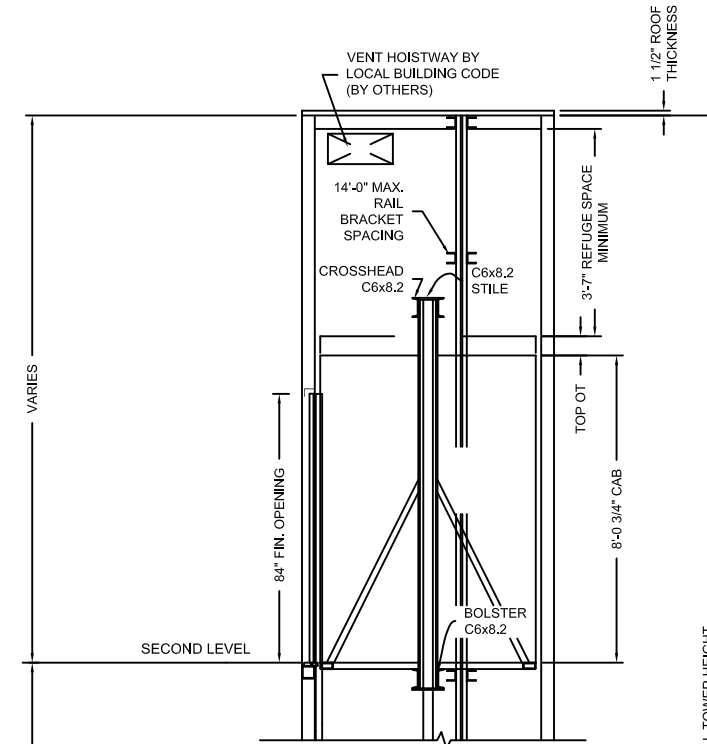
Issue Date:



PHOENIX MODULAR ELEVATOR INC.
 912 SOUTH 19TH ST. MT. VERNON, ILLINOIS 62864
 PHONE: (618)-244-2314 FAX: (618)-244-1923
 E-mail: info@phoenixmodularelevator.com
 Web page: www.phoenixmodularelevator.com

ELEVATION NO. 4 - front exit elevator car

SIZE A	REV	REV. DATE	FILE NO.
SCALE: N.T.S.	DATE:	DWG NO. CAB-WF-6	

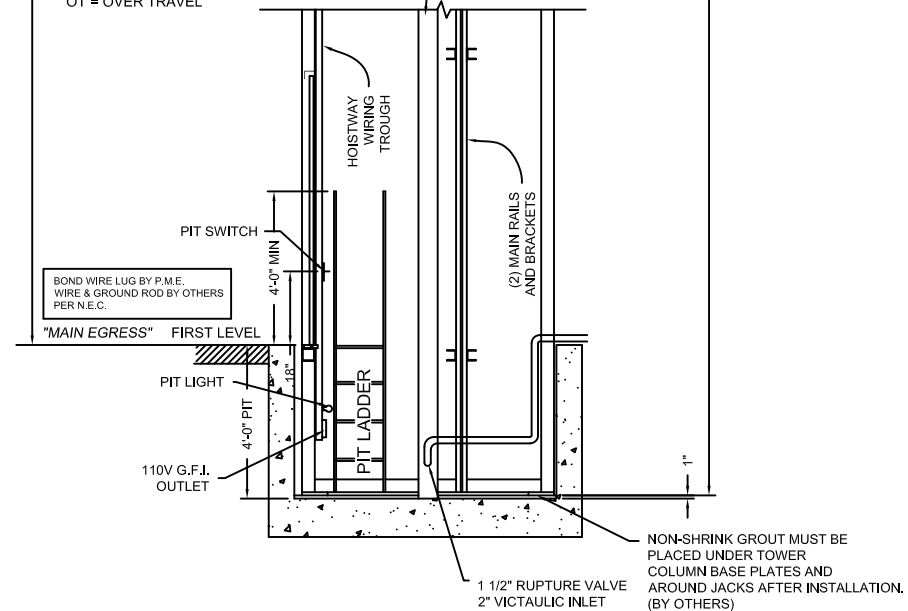


FLOOR TO FLOOR TRAVEL

4-5	
3-4	
2-3	
1-2	VARIES
NET TRAVEL	VARIES
TOP OT	VARIES
BOTTOM OT	9-1/2"
TOTAL TRAVEL	VARIES

OT = OVER TRAVEL

(2) SINGLE STROKE, TWIN JACKS
 PISTON LENGTH = to be determined
 CYLINDER LENGTH = to be determined
 CLEARANCE PROVIDED BETWEEN PISTON & CYLINDER WHEN CAR IS ON COMPRESSED SPRINGS IS 1"



SECTION VIEW

NOT TO SCALE

The section view is for informational / dimensional data. See the hoistway plan view for actual equipment locations.

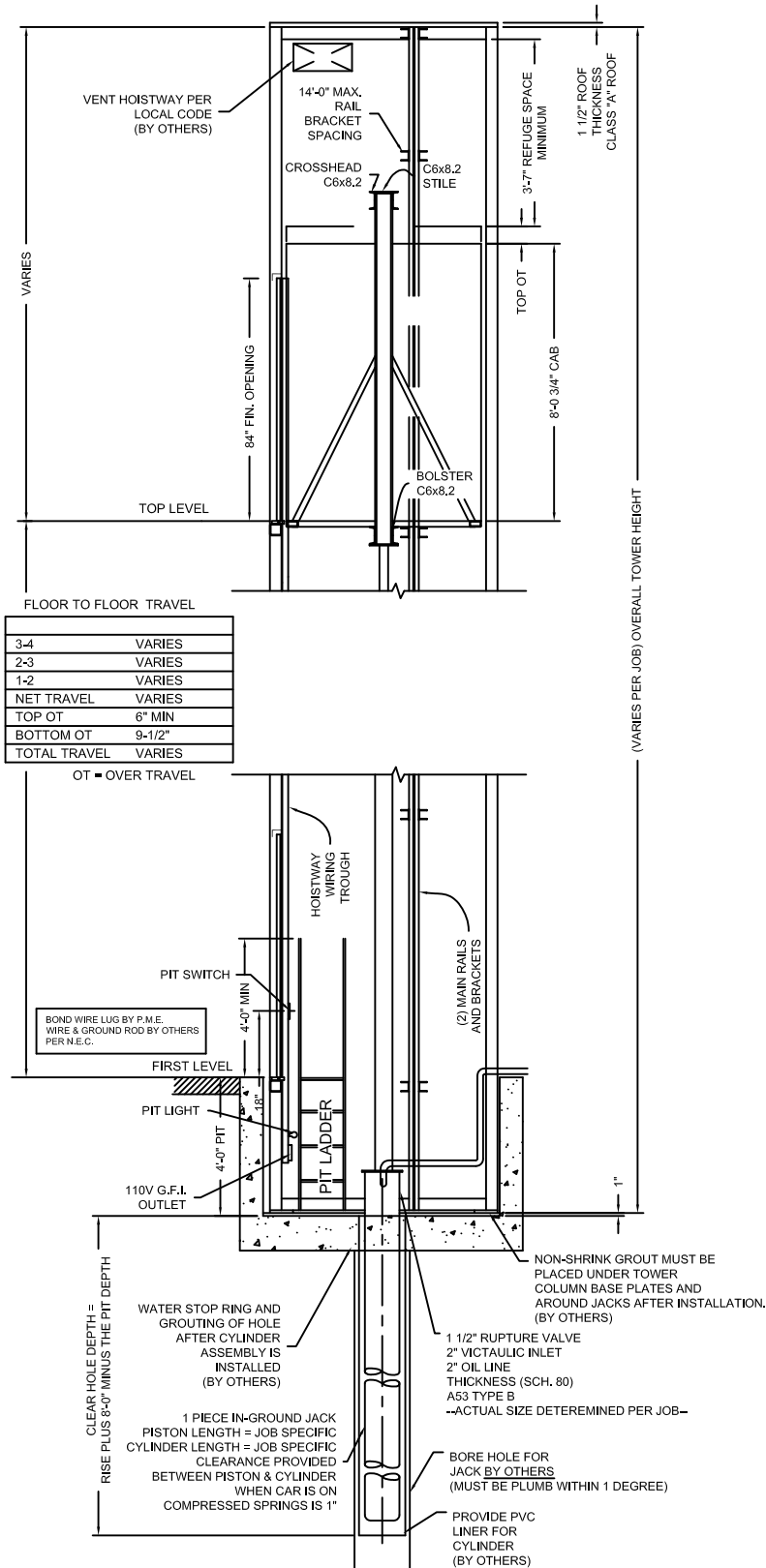
Issue Date:



PHOENIX MODULAR ELEVATOR INC.
 912 SOUTH 19TH ST. MT. VERNON, ILLINOIS 62864
 PHONE: (618)-244-2314 FAX: (618)-244-1923
 E-mail: Info@phoenixmodularelevator.com
 Web page: www.phoenixmodularelevator.com

SECTION VIEW FOR HOLELESS JACK SYSTEM

SIZE	REV	REV. DATE	FILE NO.
A			
SCALE:	N.T.S.	DATE:	DWG NO. SV-TJ/TTJ



SECTION VIEW

NOT TO SCALE

The section view is for informational data. See the hoistway plan view for proper equipment locations.

Issue Date: 6/29/10



PHOENIX MODULAR ELEVATOR INC.
 912 SOUTH 19TH ST. MT. VERNON, ILLINOIS 62864
 PHONE: (618)-244-2314 FAX: (618)-244-1923
 E-mail: Info@phoenixmodularelevator.com
 Web page: www.phoenixmodularelevator.com

SECTION VIEW FOR HOLED JACK SYSTEM

SIZE	REV	REV. DATE	FILE NO.
A			
SCALE:	N.T.S.	DATE: 1/5/05	DWG NO. SV-BH